

DISTRICT I  
P.O. Box 1980, Hobbs, NM 88241-1980

State of New Mexico  
Energy, Minerals and Natural Resources Department

Form C-102  
Revised February 10, 1994  
Submit to Appropriate District Office  
State Lease - 4 Copies  
Fee Lease - 3 Copies

DISTRICT II  
P.O. Drawer DD, Artesia, NM 88211-0719

DISTRICT III  
1000 Rio Brazos Rd., Aztec, NM 87410

DISTRICT IV  
P.O. BOX 2088, SANTA FE, N.M. 87504-2088

OIL CONSERVATION DIVISION  
P.O. Box 2088

Santa Fe, New Mexico 87504-2088

☐ AMENDED REPORT

WELL LOCATION AND ACREAGE DEDICATION PLAT

API Number 30-015-29318		Pool Code 96473	Pool Name Pierce Crossing E. Bone Springs
Property Code 20112	Property Name CANYON 23 FEDERAL COM		Well Number 1
OGRID No. 017891	Operator Name POGO PRODUCING COMPANY		Elevation 3036'

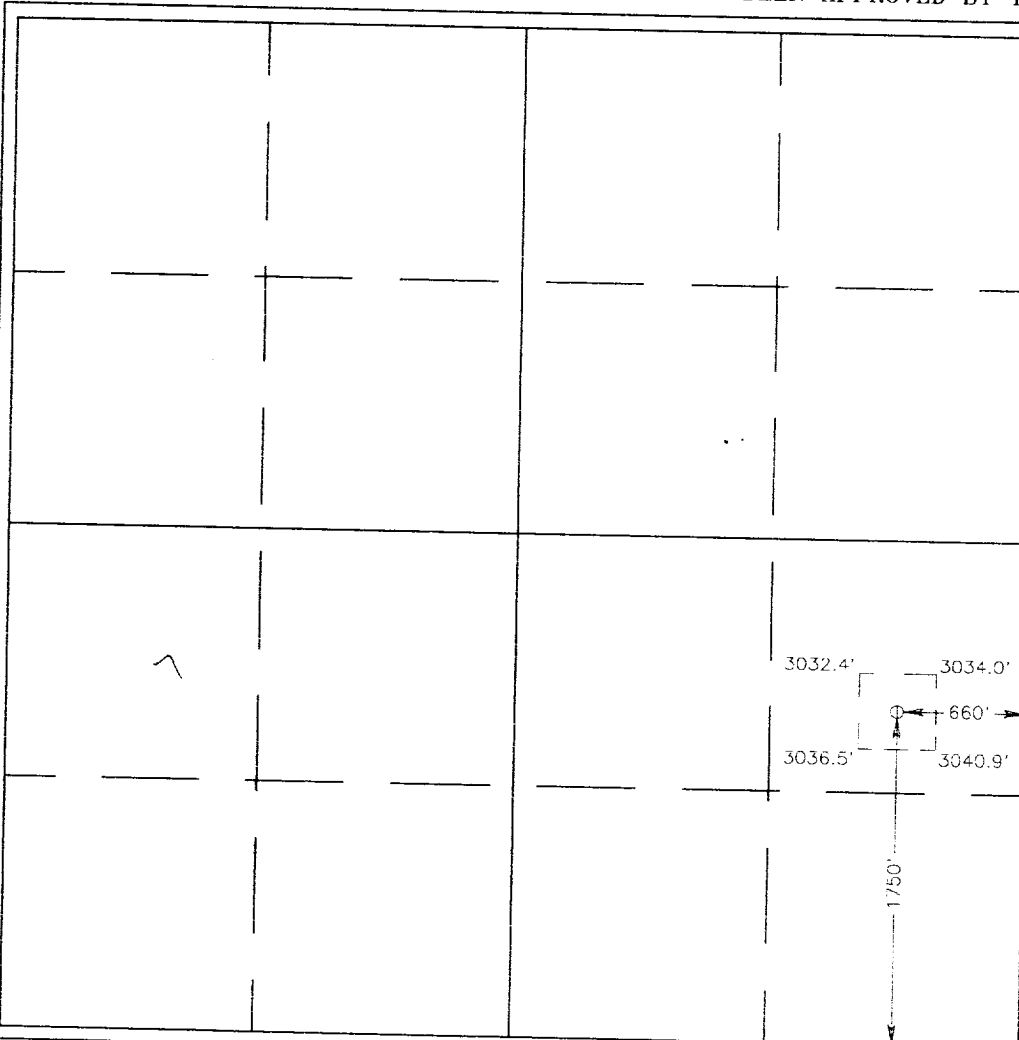
Surface Location

UL or lot No. 1	Section 23	Township 24 S	Range 29 E	Lot Idn	Feet from the 1750	North/South line SOUTH	Feet from the 660	East/West line EAST	County EDDY
--------------------	---------------	------------------	---------------	---------	-----------------------	---------------------------	----------------------	------------------------	----------------

Bottom Hole Location If Different From Surface

UL or lot No.	Section	Township	Range	Lot Idn	Feet from the	North/South line	Feet from the	East/West line	County
Dedicated Acres 40	Joint or Infill	Consolidation Code	Order No.						

NO ALLOWABLE WILL BE ASSIGNED TO THIS COMPLETION UNTIL ALL INTERESTS HAVE BEEN CONSOLIDATED  
OR A NON-STANDARD UNIT HAS BEEN APPROVED BY THE DIVISION



OPERATOR CERTIFICATION

I hereby certify the the information  
contained herein is true and complete to the  
best of my knowledge and belief.

*Barrett L. Smith*  
Signature

Barrett L. Smith  
Printed Name

Senior Operations Engineer  
Title

12/12/97  
Date

SURVEYOR CERTIFICATION

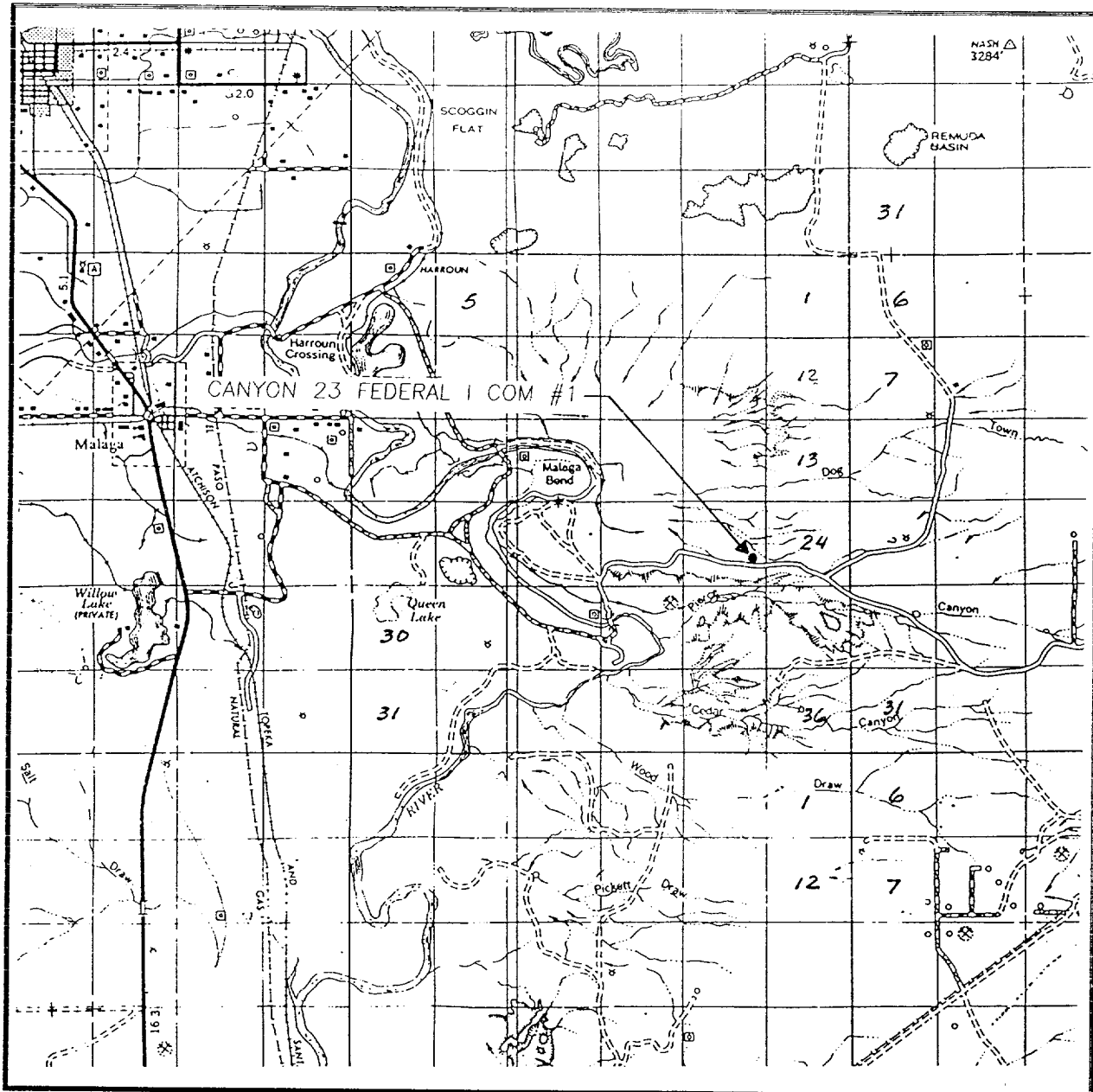
I hereby certify that the well location shown  
on this plat was plotted from field notes of  
actual surveys made by me or under my  
supervision, and that the same is true and  
correct to the best of my belief.

NOVEMBER 8, 1996

Date Surveyed  
Signature & Seal of  
Professional Surveyor

*RONALD EIDSON*  
RONALD EIDSON  
6-11-1449  
Certificate No. JOHN W. WEST 676  
RONALD EIDSON 3239  
RONALD EIDSON 12641

# VICINITY MAP



SCALE: 1" = 2 MILES

SEC. 23 TWP. 24-S RGE. 29-E

SURVEY N.M.P.M.

COUNTY EDDY

DESCRIPTION 1750' FSL & 660' FEL

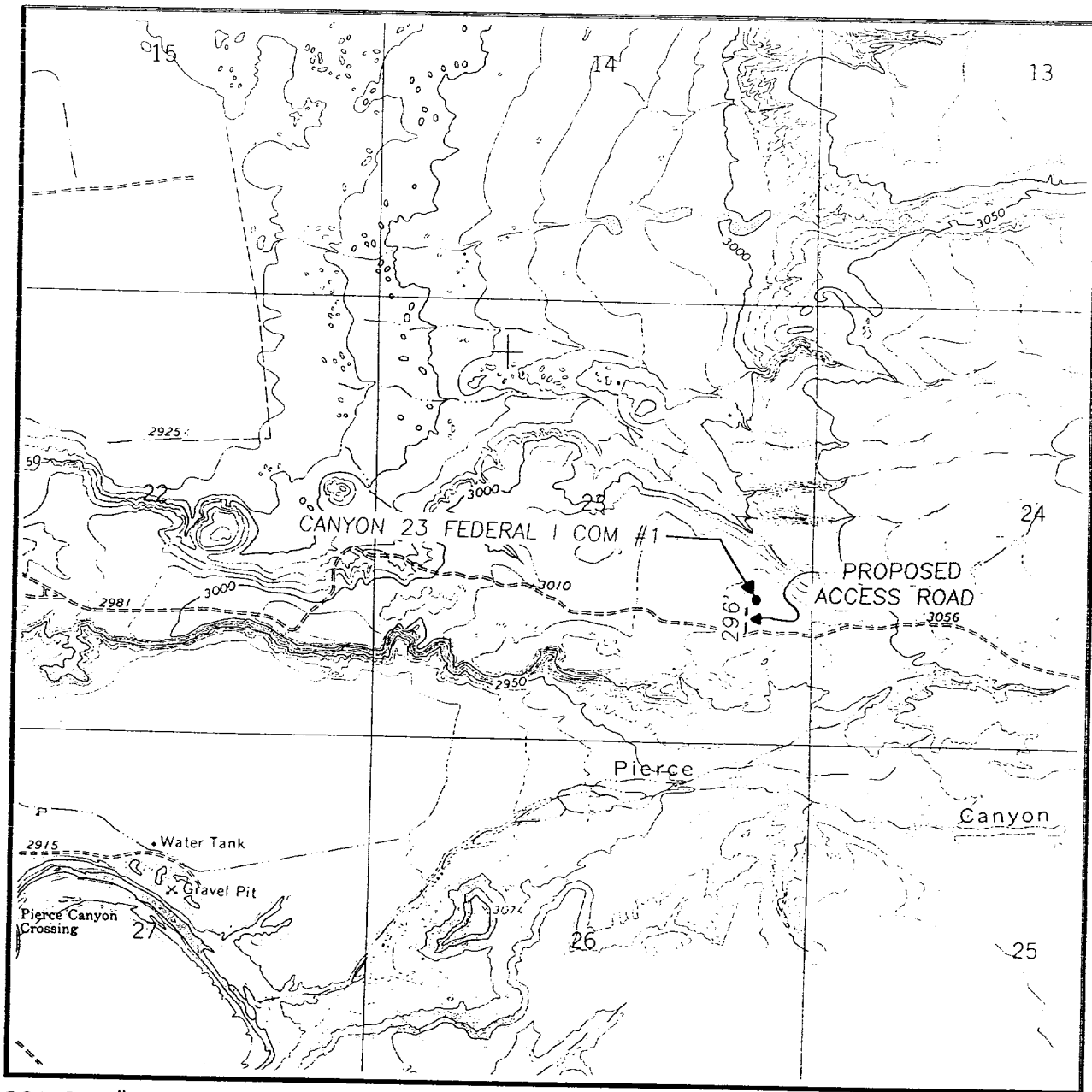
ELEVATION 3036'

OPERATOR POGO PRODUCING COMPANY

LEASE CANYON 23 FEDERAL I COM

**JOHN WEST ENGINEERING**  
**HOBBS, NEW MEXICO**  
**(505) 393-3117**

# LOCATION VERIFICATION MAP



SCALE: 1" = 2000'

CONTOUR INTERVAL:  
PIERCE CANYON - 10'

SEC. 23 TWP. 24-S RGE. 29-E

SURVEY N.M.P.M.

COUNTY EDDY

DESCRIPTION 1750' FSL & 660' FEL

ELEVATION 3036'

OPERATOR POGO PRODUCING COMPANY

LEASE CANYON 23 FEDERAL I COM

U.S.G.S. TOPOGRAPHIC MAP

PIERCE CANYON, N.M.

**JOHN WEST ENGINEERING  
HOBBS, NEW MEXICO**

**(505) 393-3117**