

District I
PO Box 1980, Hobbs, NM 88241-1980

District II
PO Drawer DD, Artesia, NM 88211-0719

District III
1000 Rio Brazos Rd., Aztec, NM 87410

District IV
PO Box 2088, Santa Fe, NM 87504-2088

State of New Mexico
Energy, Minerals & Natural Resources Department

OIL CONSERVATION DIVISION
PO Box 2088
Santa Fe, NM 87504-2088

Form C-101
Revised February 10, 1994
Instructions on back
Submit to Appropriate District Office
State Lease - 6 Copies
Fee Lease - 5 Copies

☐ AMENDED REPORT

APPLICATION FOR PERMIT TO DRILL, RE-ENTER, DEEPEN, PLUGBACK, OR ADD A ZONE

² Operator Name and Address. Devon Energy Corporation (Nevada) 1500 Mid America Tower 20 N. Broadway Oklahoma City, OK 73102-8260		¹ OGRID Number 6137
		³ API Number 30-015- 29407
⁴ Property Code 20568	⁵ Property Name TODD "36P" STATE	⁶ Well No. 19

⁷ Surface Location

UL or lot no. P	Section 36	Township 23S	Range 31E	Lot Ids	Feet from the 773	North/South line SOUTH	Feet from the 571	East/West line EAST	County EDDY
--------------------	---------------	-----------------	--------------	---------	----------------------	---------------------------	----------------------	------------------------	----------------

⁸ Proposed Bottom Hole Location If Different From Surface

UL or lot no.	Section	Township	Range	Lot Ids	Feet from the	North/South line	Feet from the	East/West line	County
⁹ Proposed Pool 1 INGLE WELLS (DELAWARE) 33745						¹⁰ Proposed Pool 2 FEB 28 1997			

¹¹ Work Type Code N	¹² Well Type Code O	¹³ Cable/Rotary R	¹⁴ Lease Type Code STATE	¹⁵ Ground Level Elevation 3525'
¹⁶ Multiple No	¹⁷ Proposed Depth 8750'	¹⁸ Formation Delaware/Bone Spring	¹⁹ Contractor Not Yet Selected	²⁰ Spud Date 4th quarter of 1997

²¹ Proposed Casing and Cement Program

Hole Size	Casing Size	Casing weight/foot	Setting Depth	Sacks of Cement	Estimated TOC
17 1/2"	13 3/8"	48	850' WSS	18 lbs 700	SURFACE
12 1/4"	8 5/8"	32	4350'	1600	SURFACE
7 7/8"	5 1/2"	15.5 & 17	8750'	1200	300'

²² Describe the proposed program. If this application is to DEEPEN or PLUG BACK give the data on the present productive zone and proposed new productive zone. Describe the blowout prevention program, if any. Use additional sheets if necessary.

Devon plans to drill this well to a total depth of 8750 feet and complete it as a Delaware development well. If it is deemed non-commercial then it will be plugged and abandoned in accordance with the rules and regulations established by the New Mexico OCD or converted to salt water disposal after installing casing and obtaining the necessary disposal permits. Blowout prevention equipment will be installed while drilling the intermediate and production holes.

*DV tool will be positioned at approximately 5300'.

Posted ID-1
NL & API
3-14-97

²³ I hereby certify that the information given above is true and complete to the best of my knowledge and belief.		OIL CONSERVATION DIVISION	
Signature: Candace R. Graham		Approved by: Jim W. Bunn BGA	
Printed name Candace R. Graham		Title: District Supervisor	
Title: Engineer Technician		Approval Date: 3-3-97	Expiration Date: 3-3-98
Date: FEBRUARY 26, 1997	Phone: (405) 235-3611 X4520	Conditions of Approval:	
		Attached <input type="checkbox"/>	

DISTRICT I
P.O. Box 1980, Hobbs, NM 88241-1980

State of New Mexico
Energy, Minerals and Natural Resources Department

Form C-102
Revised February 10, 1994
Submit to Appropriate District Office
State Lease - 4 Copies
Fee Lease - 3 Copies

DISTRICT II
P.O. Drawer 80, Artesia, NM 88211-0719

DISTRICT III
1000 Rio Brazos Rd., Aztec, NM 87410

OIL CONSERVATION DIVISION
P.O. Box 2088
Santa Fe, New Mexico 87504-2088

DISTRICT IV
P.O. Box 2088, Santa Fe, NM 87504-2088

☐ AMENDED REPORT

WELL LOCATION AND ACREAGE DEDICATION PLAT

API Number 30-015-29407	Pool Code 33745	Pool Name INGLE WELLS (DELAWARE)
Property Code	Property Name TODD 36 "P" STATE	Well Number 19
OGRID No. 6137	Operator Name DEVON ENERGY CORPORATION (NEVADA)	Elevation 3525

Surface Location

UL or lot No. P	Section 36	Township 23 S	Range 31 E	Lot Idn	Feet from the 773	North/South line SOUTH	Feet from the 571	East/West line EAST	County EDDY
---------------------------	----------------------	-------------------------	----------------------	---------	-----------------------------	----------------------------------	-----------------------------	-------------------------------	-----------------------

Bottom Hole Location If Different From Surface

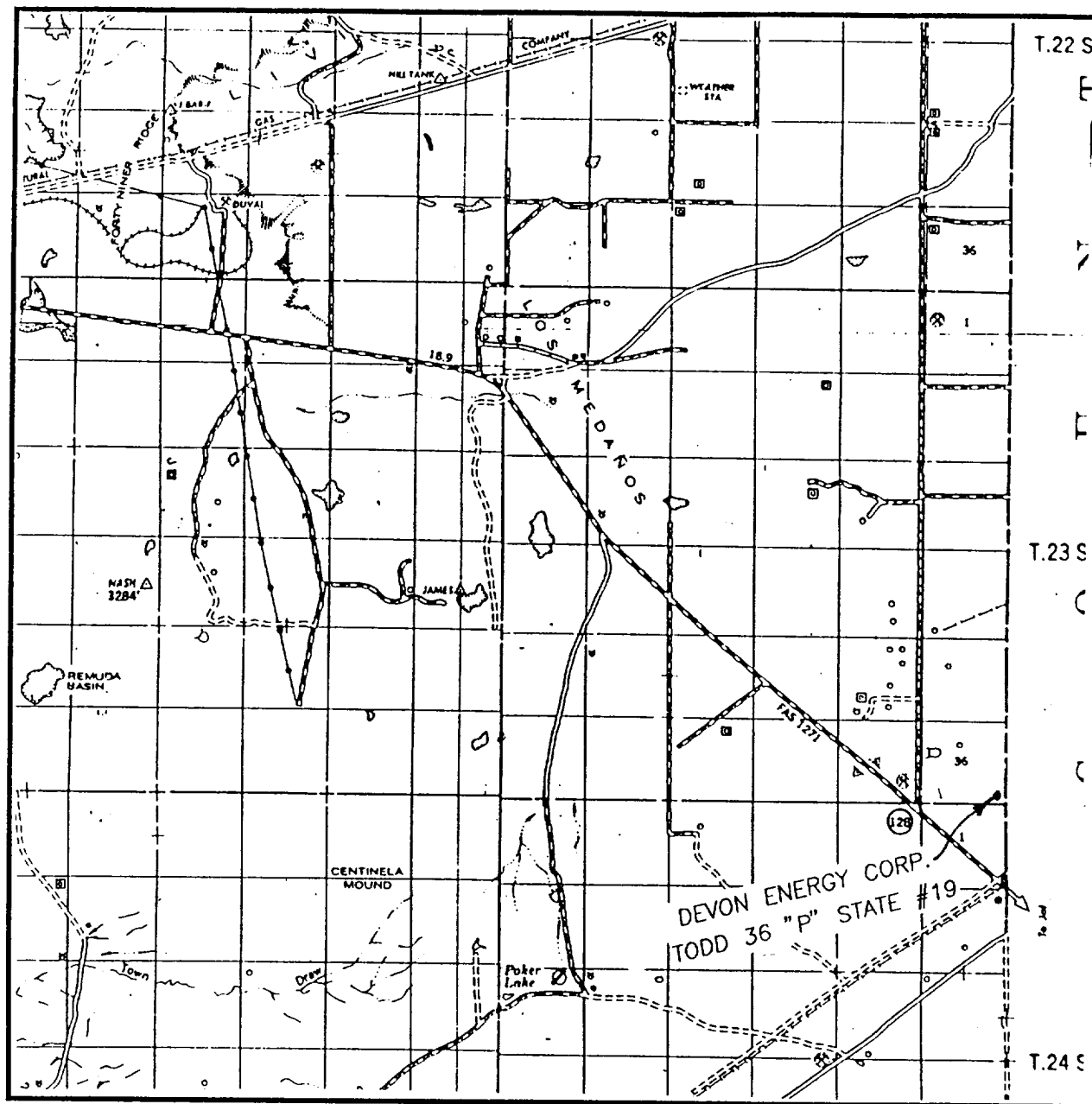
UL or lot No.	Section	Township	Range	Lot Idn	Feet from the	North/South line	Feet from the	East/West line	County
Dedicated Acres 40	Joint or Infill	Consolidation Code		Order No.					

NO ALLOWABLE WILL BE ASSIGNED TO THIS COMPLETION UNTIL ALL INTERESTS HAVE BEEN CONSOLIDATED
OR A NON-STANDARD UNIT HAS BEEN APPROVED BY THE DIVISION

				OPERATOR CERTIFICATION	
				<i>I hereby certify the the information contained herein is true and complete to the best of my knowledge and belief.</i>	
				<u>Candace R. Graham</u> Signature	
				Candace R. Graham Printed Name Engineering Tech. Title 02-26-97 Date	
				SURVEYOR CERTIFICATION	
				<i>I hereby certify that the well location shown on this plat was plotted from field notes of actual surveys made by me or under my supervision, and that the same is true and correct to the best of my belief.</i>	
				FEBRUARY 12, 1997 Date Surveyed	
				Signature of Geol. or Professional Surveyor <u>Ronald S. Eidson</u> W.O. Num. 97-11-0300 Certificate No. JOHN W. WEST, 676 RONALD S. EIDSON, 3239 GARY G. EIDSON, 12641	

Diagram showing well location with coordinates: 3522.6', 3530.5', 3521.9', 3527.5', 571', 773'.

VICINITY MAP



SCALE: 1" = 2 MILES

SEC. 36 TWP. 23-S RGE. 31-E

SURVEY N.M.P.M.

COUNTY EDDY

DESCRIPTION 773' FSL & 571' FEL

ELEVATION 3525'

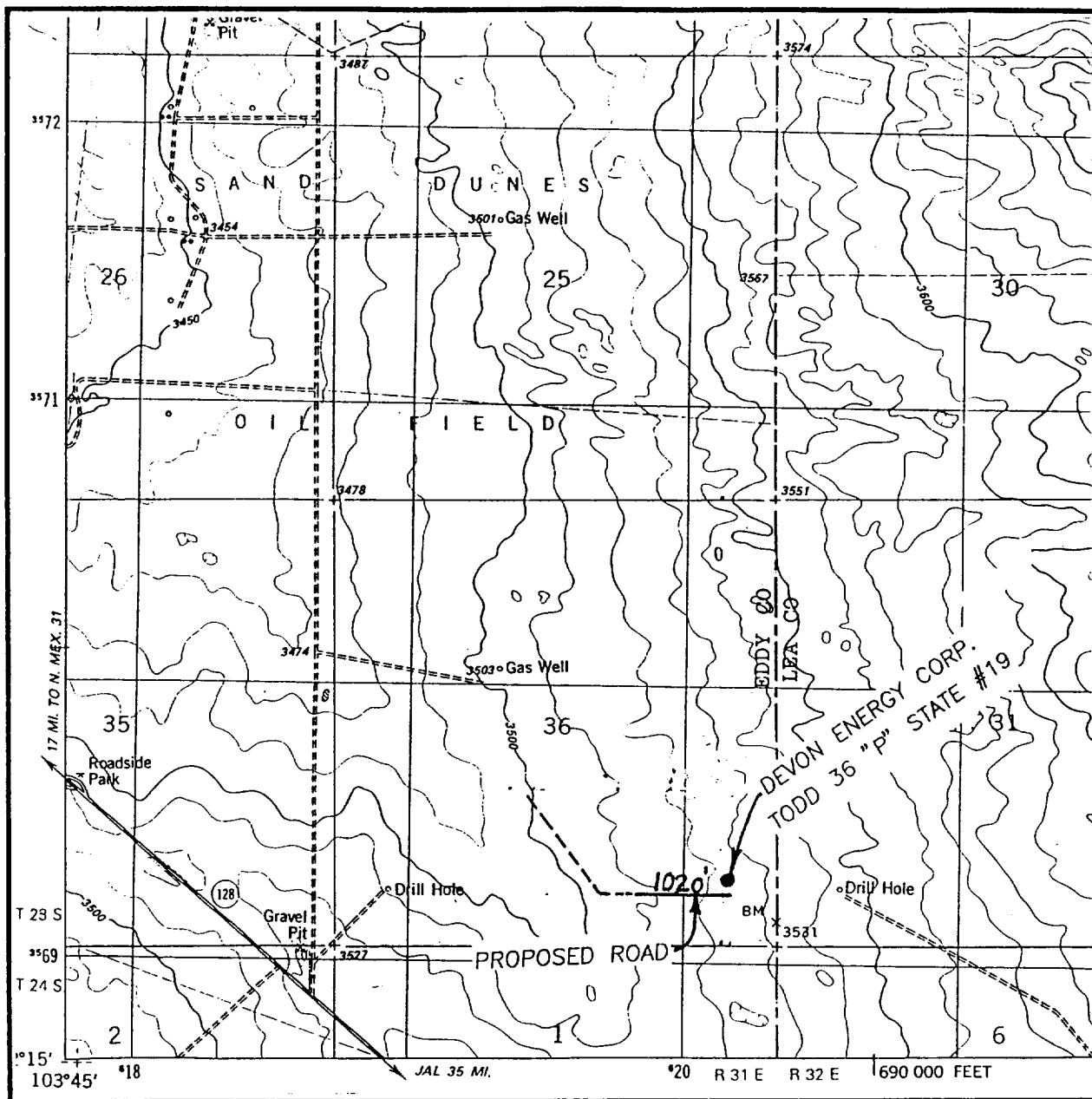
OPERATOR DEVON ENERGY CORP. (NEVADA)

LEASE TODD 36 "P" STATE #19

**JOHN WEST ENGINEERING
HOBBS, NEW MEXICO**

(505) 393-3117

LOCATION VERIFICATION MAP



SCALE: 1" = 2000'

CONTOUR INTERVAL - 10'

SEC. 36 TWP. 23-S RGE. 31-E

SURVEY N.M.P.M.

COUNTY EDDY

DESCRIPTION 773' FSL & 571' FEL

ELEVATION 3525'

OPERATOR DEVON ENERGY CORP. (NEVADA)

LEASE TODD 36 "P" STATE #19

U.S.G.S. TOPOGRAPHIC MAP

BOOTLEG RIDGE, N.M.

**JOHN WEST ENGINEERING
HOBBS, NEW MEXICO**

(505) 393-3117