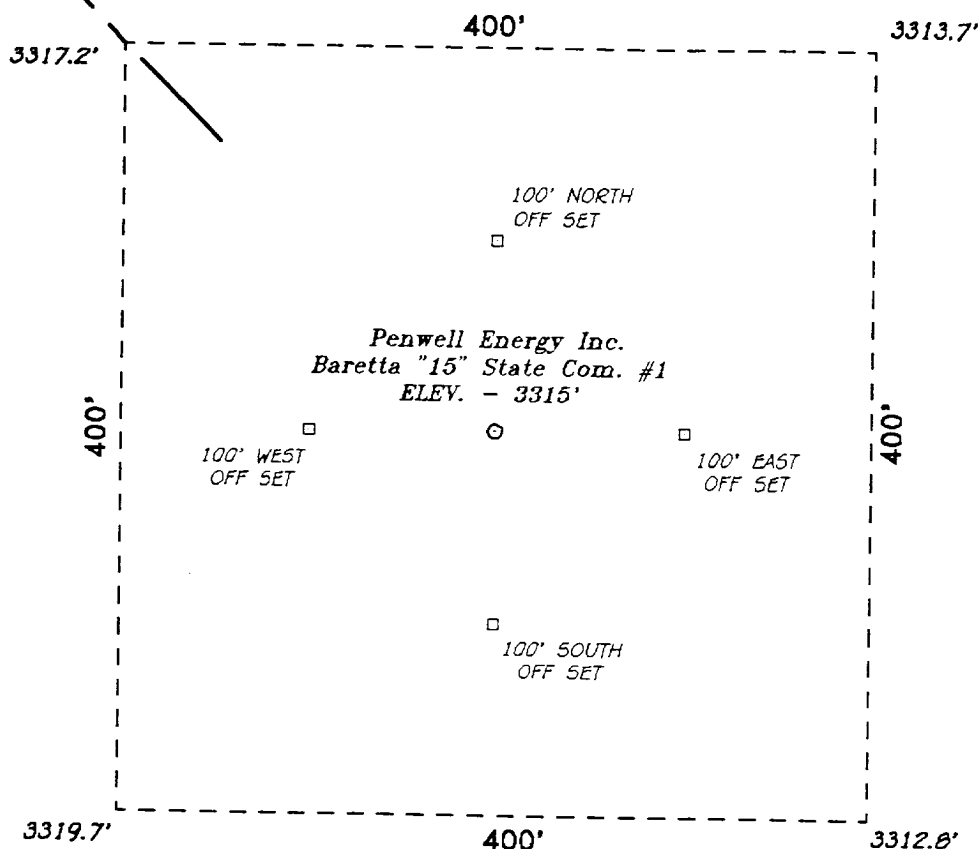


SECTION 15, TOWNSHIP 23 SOUTH, RANGE 26 EAST, N.M.P.M.,
EDDY COUNTY, NEW MEXICO.

★
Dry Hole
1096' FSL
1554' FWL

G. Proposed Lease Road
200.0'



DIRECTIONS

OUT OF CARLSBAD, N.M. TAKE U.S. HIGHWAY 62-180
(NATIONAL PARK HWY.) SOUTH 6 MILES TO A LEASE
ROAD, GO WEST ON LEASE ROAD 1/2 MILE, THEN
SOUTH 1/8 MILE, THEN SOUTHWEST 1/4 MILE TO
STAKED ROAD BY DRY HOLE.

BASIN SURVEYS P.O. BOX 1786-HOBBS, NEW MEXICO

W.O. Number: 7121

Drawn By: S.C. NICHOLS

Date: 02-24-97

Disk: SCN #34 - 7121AA.DWG

Penwell Energy Inc.

REF: Baretta "15" State Com. No. 1 Well Pad Topo

THE BARETTA "15" STATE COM. No. 1 LOCATED 660' FROM
THE SOUTH LINE AND 1980' FROM THE WEST LINE OF
SECTION 15, TOWNSHIP 23 SOUTH, RANGE 26 EAST,
N.M.P.M., EDDY COUNTY, NEW MEXICO.

Survey Date: 02-22-97

Sheet 1 of 1