

DISTRICT I  
P O Box 1980, Hobbs, NM 88240

DISTRICT II  
P O Drawer DD, Artesia, NM 88210

DISTRICT III  
1000 Rio Brazos Rd., Aztec, NM 87410

DISTRICT IV  
P O Box 2088, Santa Fe, NM 87504-2088

State of New Mexico  
Energy, Minerals and Natural Resources Department

OIL CONSERVATION DIVISION

PO Box 2088  
Santa Fe, NM 87504-2088

Form C-102  
Revised February 10, 1994

Instructions on back

Submit to Appropriate District Office

State Lease-4 copies  
Fee Lease-3 copies

WELL LOCATION AND ACREAGE DEDICATION PLAT

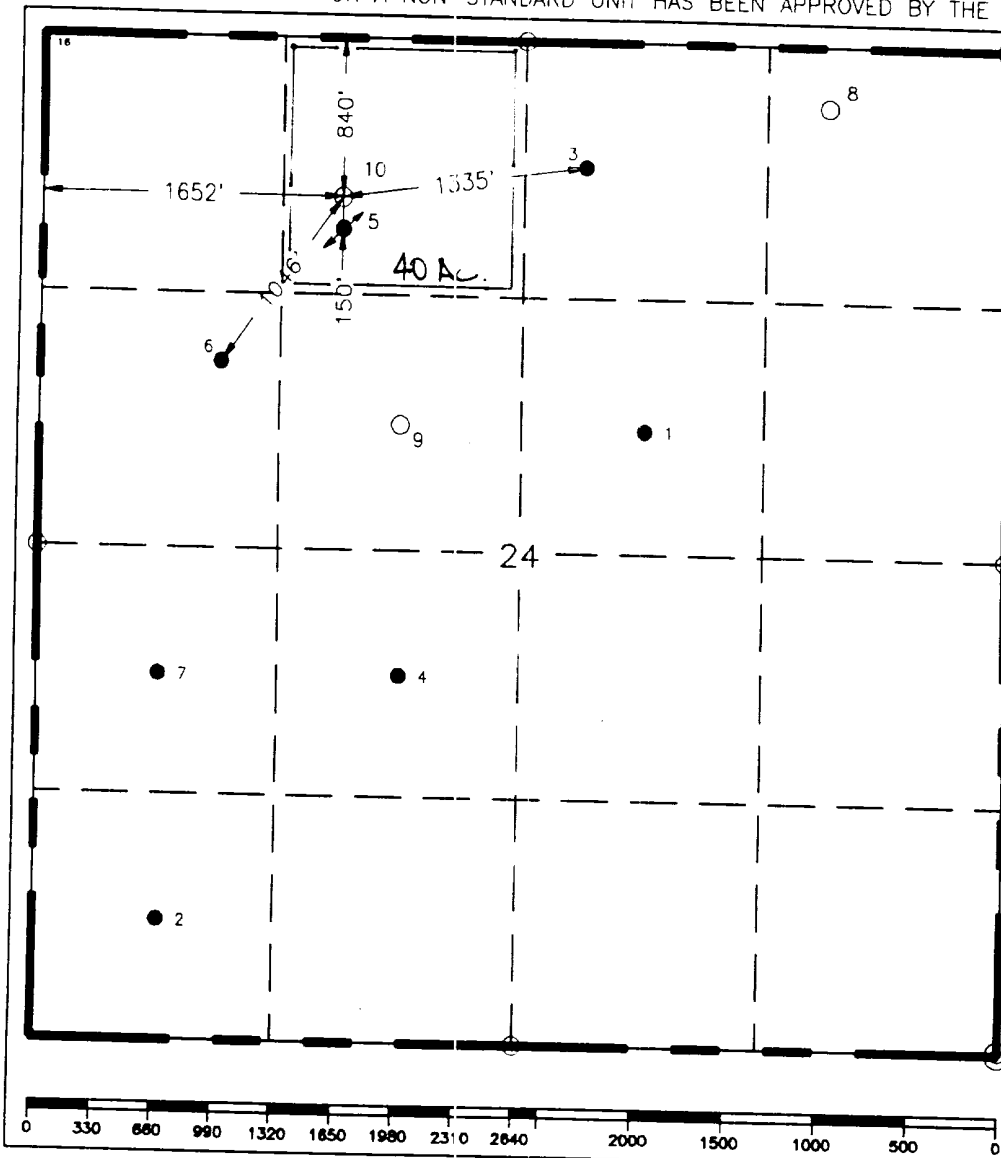
☐ AMENDED REPORT

|                                     |  |   |  |                                 |  |
|-------------------------------------|--|---|--|---------------------------------|--|
| <sup>1</sup> API Number             |  | <sup>2</sup> Pool Code  |  | <sup>3</sup> Pool Name          |  |
| <sup>4</sup> Property Code<br>10947 |  | <sup>5</sup> Property Name<br>Getty "24" Federal                    |  | <sup>6</sup> Well Number<br>10  |  |
| <sup>7</sup> GRID No.<br>22351      |  | <sup>8</sup> Operator Name<br>TEXACO EXPLORATION & PRODUCTION, INC. |  | <sup>9</sup> Elevation<br>3555' |  |

| <sup>10</sup> Surface Location |               |                  |               |         |                       |                           |                        |                        |                             |
|--------------------------------|---------------|------------------|---------------|---------|-----------------------|---------------------------|------------------------|------------------------|-----------------------------|
| UL or lot no.<br>C             | Section<br>24 | Township<br>22-S | Range<br>31-E | Lot Idn | Feet from the<br>840' | North/South line<br>North | Feet from the<br>1652' | East/West line<br>West | <sup>7</sup> County<br>Eddy |

| <sup>11</sup> Bottom Hole Location If Different From Surface |         |                               |       |                                  |               |                         |               |                |                     |
|--|---------|-------------------------------|-------|----------------------------------|---------------|-------------------------|---------------|----------------|---------------------|
| UL or lot no.  | Section | Township                      | Range | Lot Idn                          | Feet from the | North/South line        | Feet from the | East/West line | <sup>7</sup> County |
| <sup>12</sup> Dedicated Acres<br>40                          |         | <sup>13</sup> Joint or Infill |       | <sup>14</sup> Consolidation Code |               | <sup>15</sup> Order No. |               |                |                     |

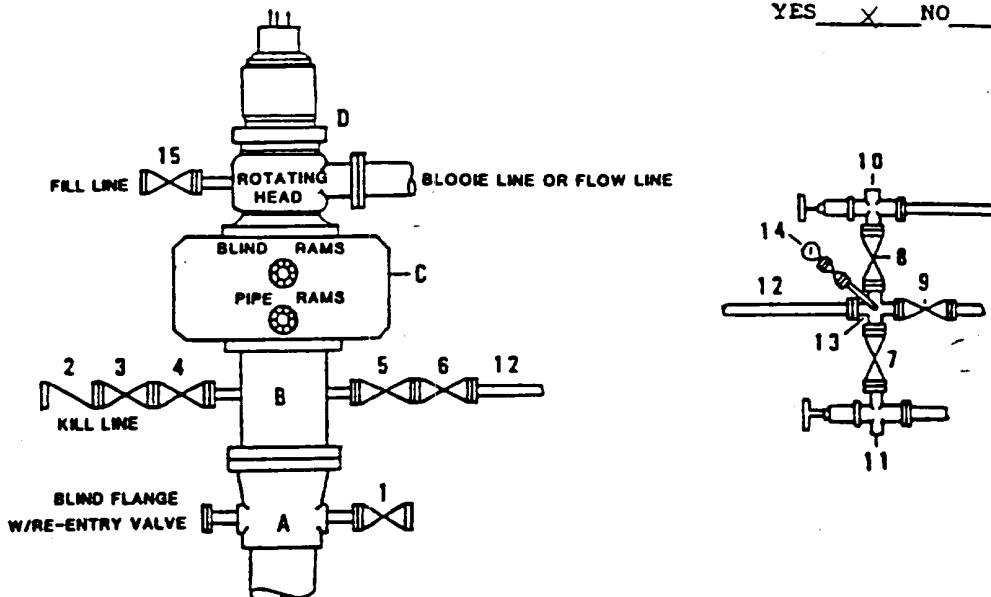
NO ALLOWABLE WILL BE ASSIGNED TO THIS COMPLETION UNTIL ALL INTERESTS HAVE BEEN CONSOLIDATED  
OR A NON-STANDARD UNIT HAS BEEN APPROVED BY THE DIVISION.



|   |                           |
|---|---------------------------|
| <sup>16</sup> OPERATOR CERTIFICATION  |                           |
| I hereby certify that the information contained herein is true and complete to the best of my knowledge and belief.   |                           |
| Signature   | <i>C. Wade Howard</i>     |
| Printed Name  | C. Wade Howard            |
| Position  | Engineer's Assistant      |
| Company   | Texaco Expl. & Prod. Inc. |
| Date  | August 13, 1996           |
| <sup>17</sup> SURVEYOR CERTIFICATION  |                           |
| I hereby certify that the well location shown on this plat was plotted from field notes of actual surveys made by me or under my supervision, and that the same is true and correct to the best of my knowledge and belief. |                           |
| Date Surveyed   | August 9, 1996            |
| Signature & Seal of Professional Surveyor   | <i>John S. Piper</i>      |
| Certificate No.   | 7254 John S. Piper        |
| Sheet   | 8 of 8                    |

**DRILLING CONTROL  
CONDITION II-B 3000 WP  
FOR AIR DRILLING OR  
WHERE NITROGEN OR AIR BLOWS ARE EXPECTED**

H<sub>2</sub>S TRIM REQUIRED  
YES ☒ NO ☐



**DRILLING CONTROL  
MATERIAL LIST - CONDITION II - B**

- A      Texaco Wellhead
- B      3000# W.P. drilling spool with a 2" minimum flanged outlet for kill line and 3" minimum flanged outlet for choke line.
- C      3000# W.P. Dual ram type preventer, hydraulic operated with 1" steel, 3000# W.P. control lines (where sub-structure height is adequate, 2 - 3000# W.P. single ram type preventers may be utilized).
- D      Rotating Head with fill up outlet and extended Bleeve Line.
- 1,3,4, 7,8,      2" minimum 3000# W.P. flanged full opening steel gate valve, or Halliburton Lo Torc Plug valve.
- 2      2" minimum 3000# W.P. back pressure valve.
- 5,6,9      3" minimum 3000# W.P. flanged full opening steel gate valve, or Halliburton Lo Torc Plug valve.
- 12      3" minimum schedule 80, Grade "B", seamless line pipe.
- 13      2" minimum x 3" minimum 3000# W.P. flanged cross.
- 10,11      2" minimum 3000# W.P. adjustable choke bodies.
- 14      Cameron Mud Gauge or equivalent ( location optional in choke line).
- 15      2" minimum 3000# W.P. flanged or threaded full opening steel gate valve, or Halliburton Lo Torc Plug valve.



**TEXACO, INC.**

MIDLAND DIVISION  
MIDLAND, TEXAS



|             |      |        |        |
|-------------|------|--------|--------|
| SCALE       | DATE | EST NO | DRG NO |
| DRAWN BY    |      |        |        |
| CHECKED BY  |      |        |        |
| APPROVED BY |      |        |        |

EXHIBIT C