

District I
PO Box 1980, Hobbs, NM 88241-1980

District II
PO Drawer DD, Artesia, NM 88211-0719

District III
1000 Rio Brazos Rd., Aztec, NM 87410

District IV
PO Box 2088, Santa Fe, NM 87504-2088

State of New Mexico
Energy, Minerals & Natural Resources Department

OIL CONSERVATION DIVISION
PO Box 2088
Santa Fe, NM 87504-2088

Form C-101
Revised February 10, 1994
Instructions on back
Submit to Appropriate District Office
State Lease - 6 Copies
Fee Lease - 5 Copies



AMENDED REPORT

APPLICATION FOR PERMIT TO DRILL, RE-ENTER, DEEPEN, PLUGBACK, OR ADD A ZONE

² Operator Name and Address. Devon Energy Corporation (Nevada) 1500 Mid America Tower 20 N. Broadway Oklahoma City, OK 73102-8260		RECEIVED JUN - 4 1997	¹ OGRID Number 6137
			³ API Number 30-015-29640
⁴ Property Code 18277	⁵ Property Name TODD "36N" STATE OIL CON. DIV. DIST. 2		⁶ Well No. 21

⁷ Surface Location

UL or lot no.	Section	Township	Range	Lot Ids	Feet from the	North/South line	Feet from the	East/West line	County
N	36	23S	31E		898	SOUTH	1742	WEST	EDDY

⁸ Proposed Bottom Hole Location If Different From Surface

UL or lot no.	Section	Township	Range	Lot Ids	Feet from the	North/South line	Feet from the	East/West line	County
⁹ Proposed Pool 1 INGLE WELLS (DELAWARE) 33745						¹⁰ Proposed Pool 2			

¹¹ Work Type Code N	¹² Well Type Code O	¹³ Cable/Rotary R	¹⁴ Lease Type Code State (K-952)	¹⁵ Ground Level Elevation 3499'
¹⁶ Multiple No	¹⁷ Proposed Depth 6400'	¹⁸ Formation Delaware / Cherry Canyon	¹⁹ Contractor L & M DRILLING	²⁰ Spud Date JULY, 1997

²¹ Proposed Casing and Cement Program

Hole Size	Casing Size	Casing weight/foot	Setting Depth	Sacks of Cement	Estimated TOC
17 1/2"	13 3/8"	48	850'	700	SURFACE
12 1/4"	8 5/8"	32	4400'	1600	SURFACE
7 7/8"	5 1/2"	15.5 & 17	6400'	+/-250	+/-5500'
		DV Tool at	+/-5500'	+/-500	+/-4300'

²² Describe the proposed program. If this application is to DEEPEN or PLUG BACK give the data on the present productive zone and proposed new productive zone. Describe the blowout prevention program, if any. Use additional sheets if necessary.

Devon plans to drill this well to a total depth of 6400 feet and complete it as a Delaware development well. If it is deemed non-commercial then it will be plugged and abandoned in accordance with the rules and regulations established by the New Mexico OCD or converted to salt water disposal after installing casing and obtaining the necessary disposal permits. Blowout prevention equipment will be installed while drilling the intermediate and production holes.

*DV tool will be positioned at approximately 5500 feet.

²³ I hereby certify that the information given above is true and complete to the best of my knowledge and belief.		OIL CONSERVATION DIVISION	
Signature: Candace R. Graham	Approved by: <i>Jim W. [unclear]</i>	BGA	
Printed name: Candace Graham	Title: <i>District Supervisor</i>		
Title: Engineer Technician	Approval Date: 6-6-97	Expiration Date: 8-8-98	
Date: May 29, 1997	Phone: (405) 235-3611, X4520	Conditions of Approval: 18 Hours work on 13 3/8" casing	
Attached <input type="checkbox"/>		8 5/8" casing	

DISTRICT I
P. O. Box 1980
Hobbs, NM 88241-1980

State of New Mexico
Energy, Minerals, and Natural Resources Department

Form C-102
Revised 02-10-94
Instructions on back

DISTRICT II
P. O. Drawer DD
Artesia, NM 88211-0719

OIL CONSERVATION DIVISION
P. O. Box 2088
Santa Fe, New Mexico 87504-2088

Submit to the Appropriate
District Office
State Lease - 4 copies
Fee Lease - 3 copies

☐ AMENDED REPORT

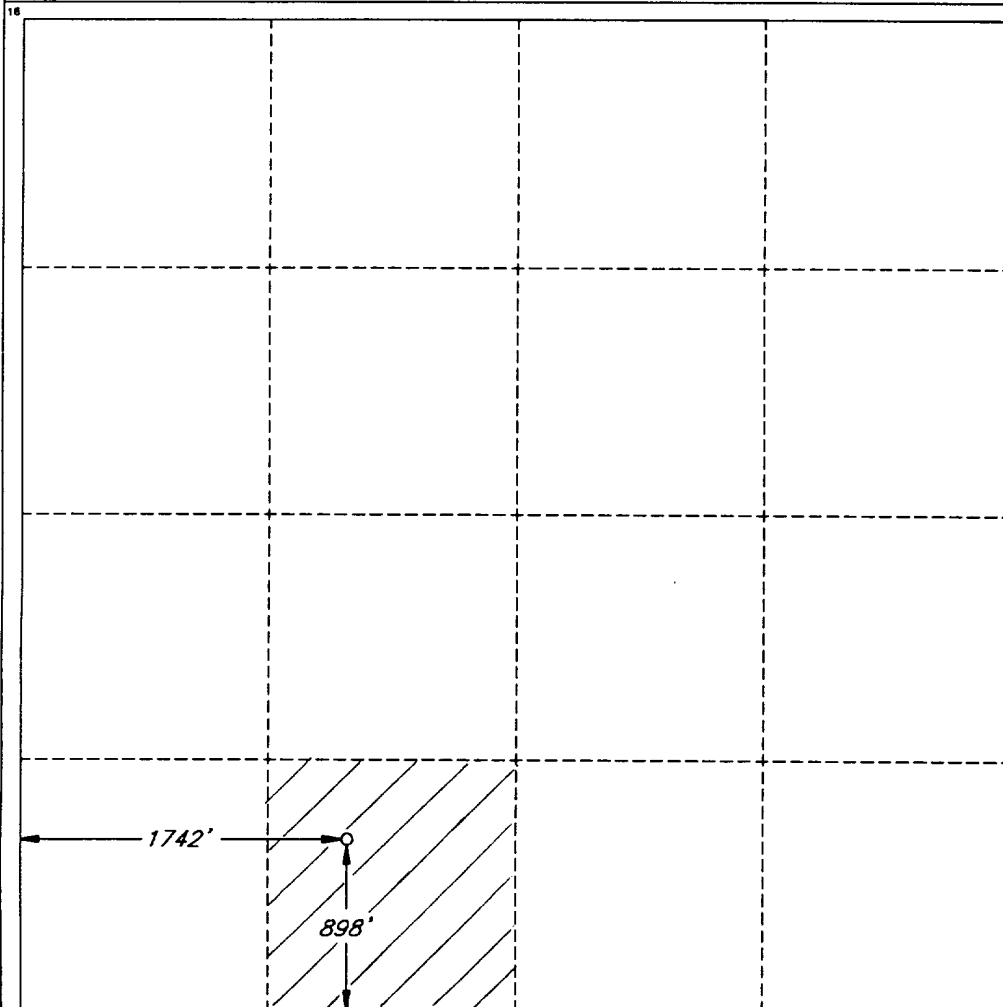
DISTRICT III
1000 Rio Brazos Rd.
Aztec, NM 87410

DISTRICT IV
P. O. Box 2088
Santa Fe, NM 87507-2088

WELL LOCATION AND ACREAGE DEDICATION PLAT

1 API Number		2 Pool Code 33745		3 Pool Name Ingle Wells (Delaware)					
4 Property Code		5 Property Name TODD 36 'N' STATE						6 Well Number 21	
7 OGRID No. 6137		8 Operator Name DEVON ENERGY CORPORATION (NEVADA)						9 Elevation 3499'	
10 SURFACE LOCATION									
UL or lot no. N	Section 36	Township 23 SOUTH	Range 31 EAST, N.M.P.M.	Lot Ida	Feet from the 898'	North/South line SOUTH	Feet from the 1742'	East/West line WEST	County EDDY
11 BOTTOM HOLE LOCATION IF DIFFERENT FROM SURFACE									
UL or lot no.	Section	Township	Range	Lot Ida	Feet from the	North/South line	Feet from the	East/West line	County
12 Dedicated Acres 40		13 Joint or Infill		14 Consolidation Code		15 Order No.			

NO ALLOWABLE WELL BE ASSIGNED TO THIS COMPLETION UNTIL ALL INTERESTS HAVE BEEN
CONSOLIDATED OR A NON-STANDARD UNIT HAS BEEN APPROVED BY THE DIVISION



OPERATOR CERTIFICATION

I hereby certify that the information
contained herein is true and complete
to the best of my knowledge and belief.

Signature
Candace R. Graham

Printed Name
Candace R. Graham

Title
Engineering Tech.

Date
05-29-97

SURVEYOR CERTIFICATION

I hereby certify that the well
location shown on this plat was
plotted from field notes of actual
surveys made by me or under
my supervision, and that the
same is true and correct to the
best of my belief.

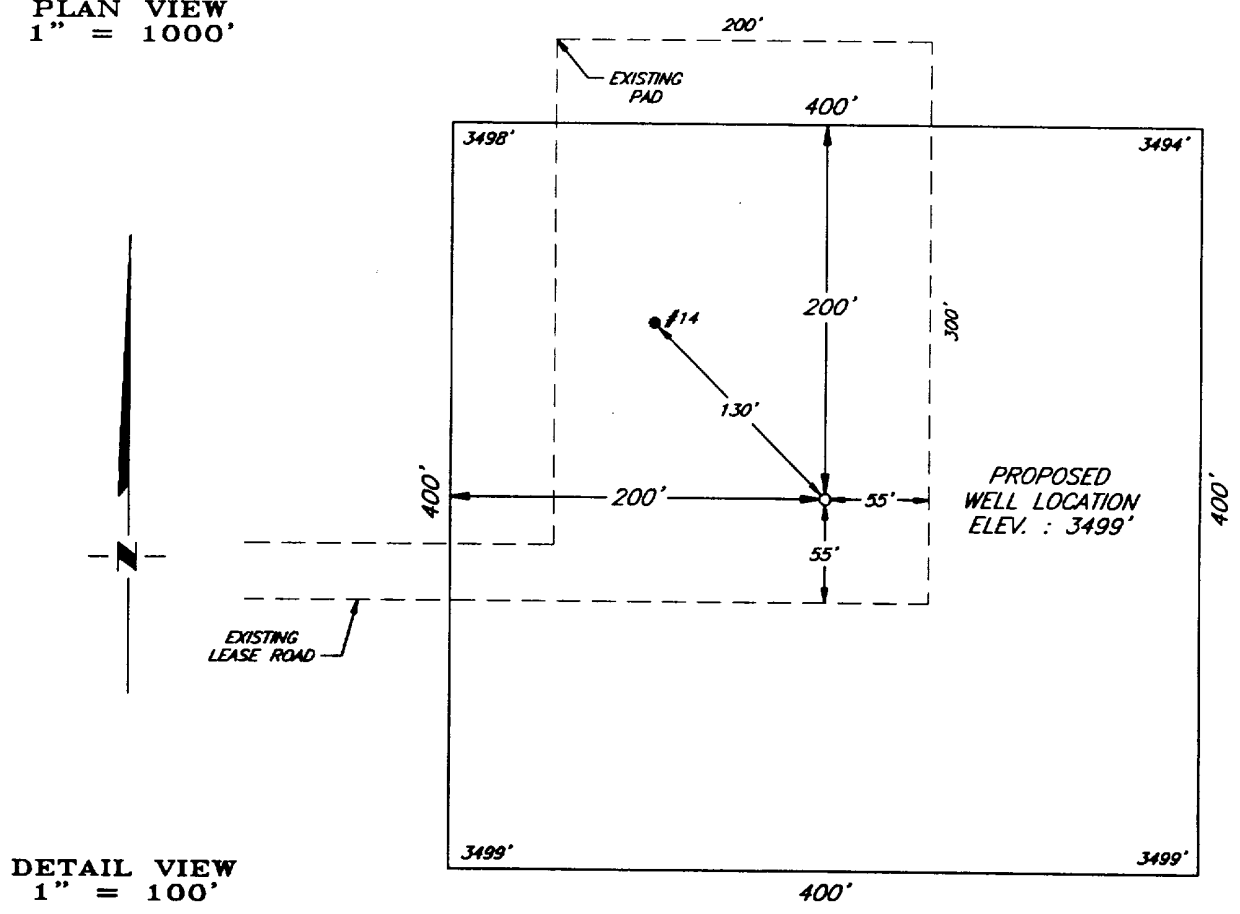
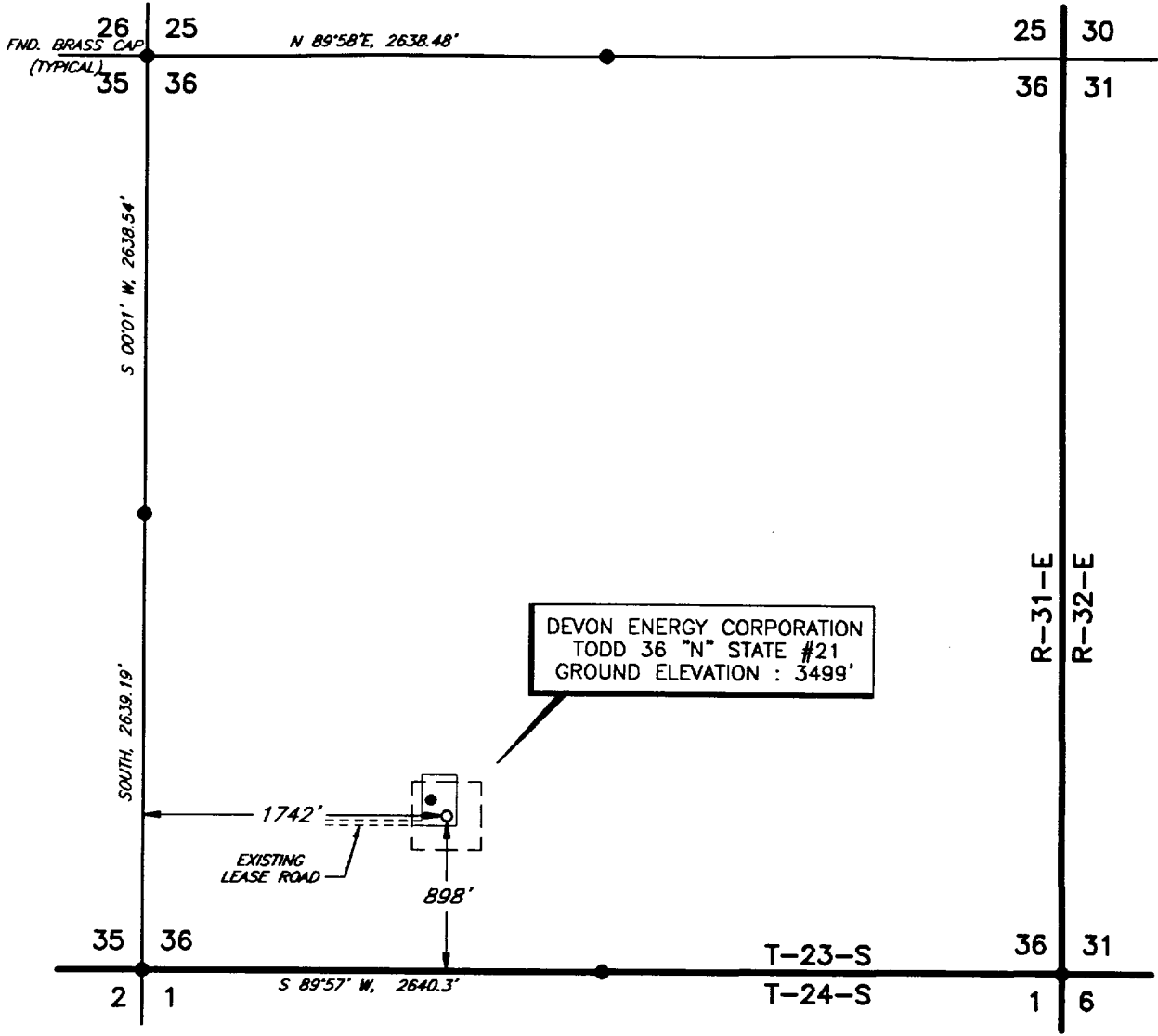
Date of Survey
MAY 21, 1997

Signature and Seal of
Professional Surveyor
12220

Signature
Roger M. Robbins

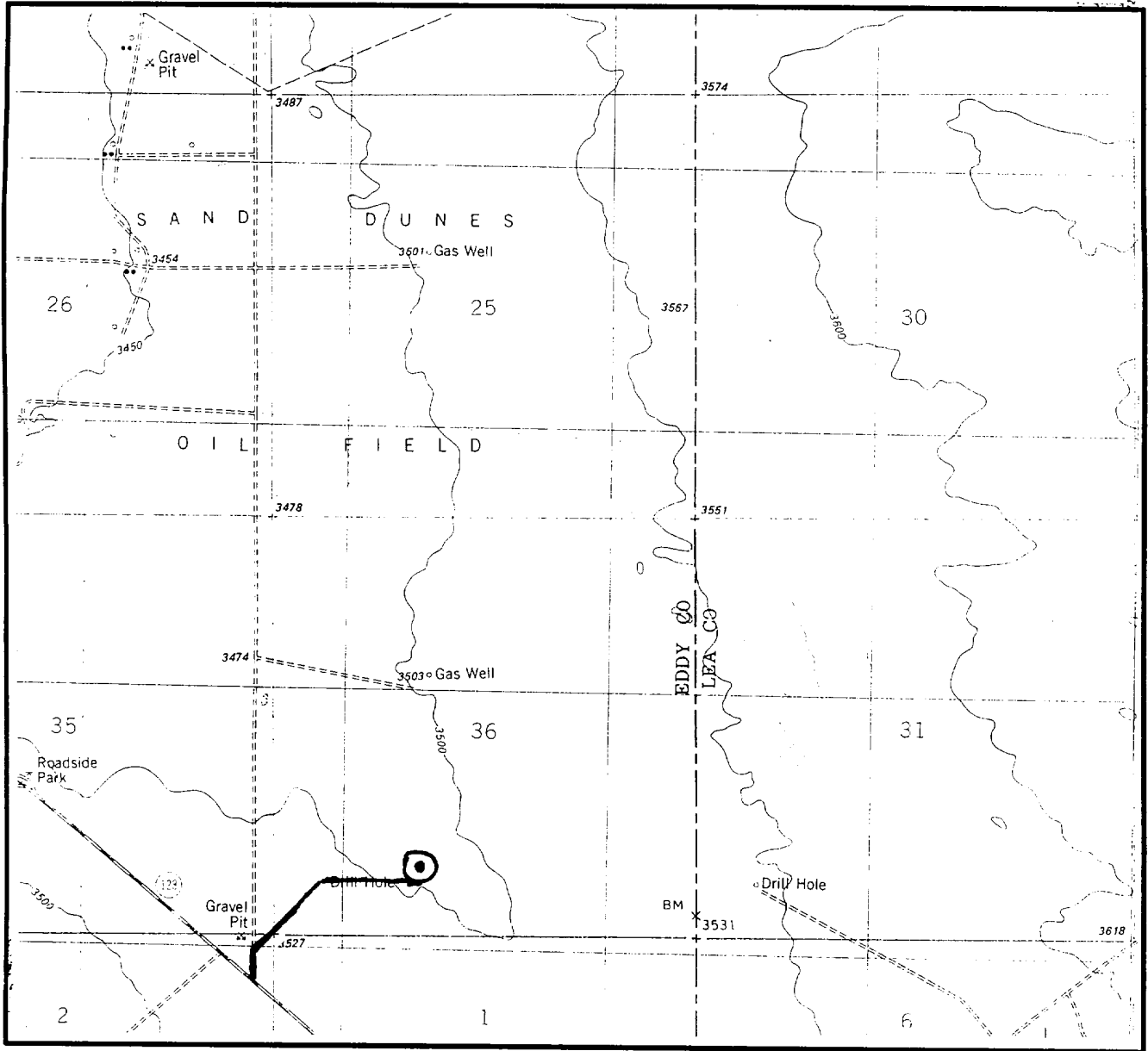
Certificate No.
ROGER M. ROBBINS P.S. #12128
JOB #52121 / 47 SW / V.H.B.

PLAT SHOWING PROPOSED
WELL LOCATION AND LEASE ROAD IN
SECTION 36, T-23-S, R-31-E, N.M.P.M.
EDDY COUNTY, NEW MEXICO



				DEVON ENERGY CORPORATION	SCALE:	AS SHOWN
					DATE:	MAY 21, 1997
NO.	REVISION	DATE	BY	SURVEYING AND MAPPING BY TOPOGRAPHIC LAND SURVEYORS MIDLAND, TEXAS	JOB NO.:	52121-F
SURVEYED BY:		R.J.O.			47 SW	
DRAWN BY:		V.H.B.				
APPROVED BY:		R.M.R.				
					SHEET :	1 OF 1

LOCATIC.. & ELEVATION VERIFICATION MAP



SCALE : 1" = 2000'

CONTOUR INTERVAL 10'

SECTION 36 TWP 23-S RGE 31-E
SURVEY NEW MEXICO PRINCIPAL MERIDIAN
COUNTY EDDY STATE NM
DESCRIPTION 898' FSL & 1742' FWL
ELEVATION 3499'

OPERATOR DEVON ENERGY CORPORATION
LEASE TODD 36 "N" STATE #21

U.S.G.S. TOPOGRAPHIC MAP
BOOTLEG RIDGE, NEW MEXICO

SCALED LAT. N 32°15'21"
LONG. W 103°44'02"



This location has been very carefully staked on the ground according to the best official survey records, maps, and other data available to us.
Review this plat and notify us immediately of any possible discrepancy.

TOPOGRAPHIC LAND SURVEYORS

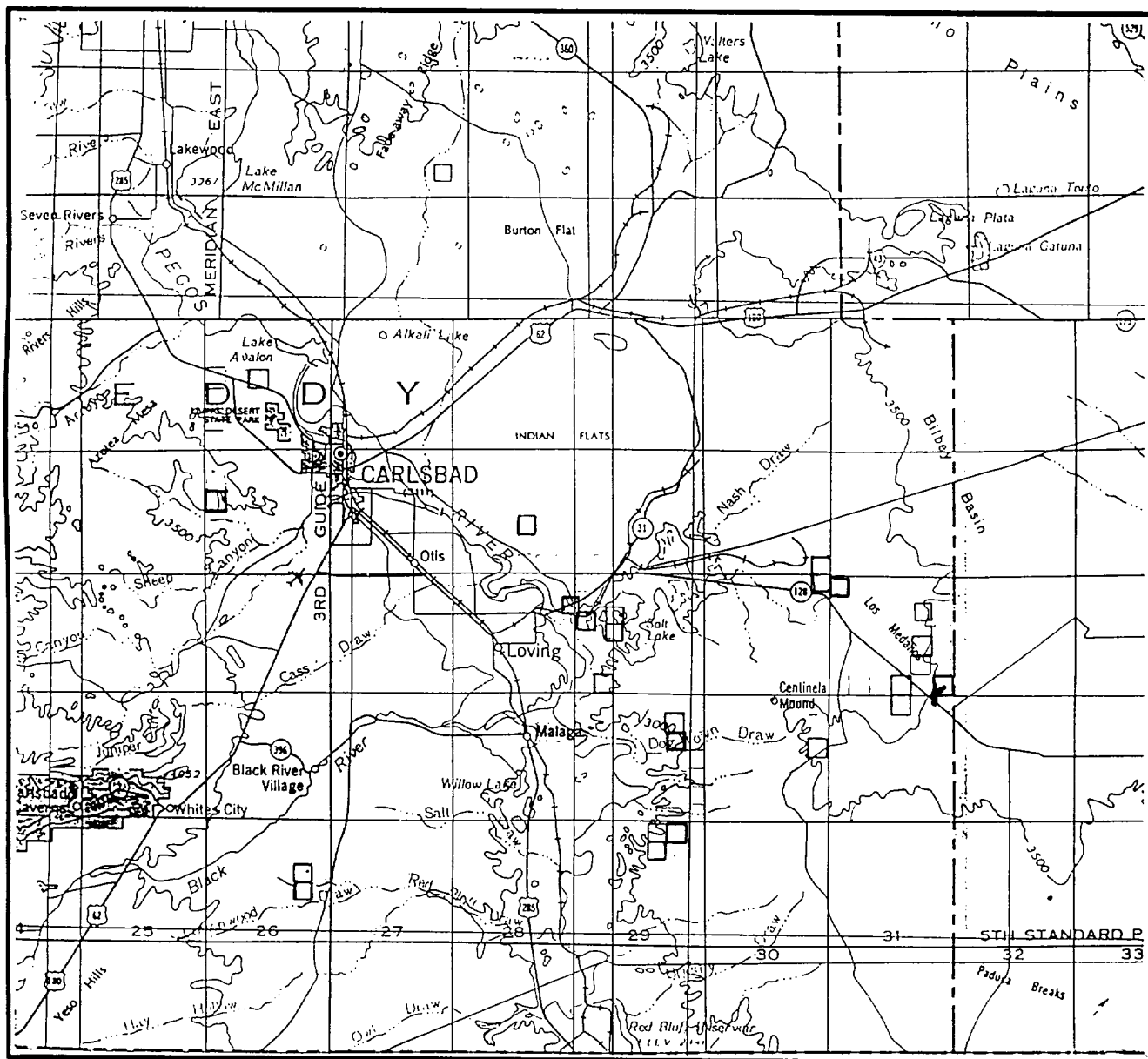
Surveying & Mapping for the Oil & Gas Industry

1307 N. HOBART
PAMPA, TX. 79065
(800) 658-6382

6709 N. CLASSEN BLVD.
OKLAHOMA CITY, OK. 73116
(800) 654-3219

2903 N. BIG SPRING
MIDLAND, TX. 79705
(800) 767-1653

VICINITY MAP



SECTION 36 TWP 23-S RGE 31-E
 SURVEY NEW MEXICO PRINCIPAL MERIDIAN
 COUNTY EDDY STATE NM
 DESCRIPTION 898' FSL & 1742' FWL

OPERATOR DEVON ENERGY CORPORATION
 LEASE TOOD 36 "N" STATE #21

DISTANCE & DIRECTION FROM THE JCT. OF STATE HWY.
128 & PAVED COUNTY ROAD, ±35 MILES WEST OF JAL,
GO NORTH 0.1 MILE ON PAVED COUNTY ROAD, THENCE
NORTHEAST 0.3 MILE ON ABANDONED LEASE ROAD,
THENCE EAST ±0.2 MILE ON LEASE ROAD TO A POINT
±55' SOUTH OF THE LOCATION.



This location has been very carefully staked on the ground according to the best official survey records, maps, and other data available to us.
 Review this plot and notify us immediately of any possible discrepancy.

TOPOGRAPHIC LAND SURVEYORS

Surveying & Mapping for the Oil & Gas Industry

1307 N. HOBART
 PAMPA, TX. 79065
 (800) 658-6382

6709 N. CLASSEN BLVD.
 OKLAHOMA CITY, OK. 73116
 (800) 654-3219

2903 N. BIG SPRING
 MIDLAND, TX. 79705
 (800) 767-1653