

UNITED STATES
DEPARTMENT OF THE INTERIOR
BUREAU OF LAND MANAGEMENT

4-22-97 DM

APPLICATION FOR PERMIT TO DRILL OR DEEPEN

1a. TYPE OF WORK

DRILL ☒DEEPEN ☐

b. TYPE OF WELL

OIL
WELL ☒GAS
WELL ☐OTHER ☐SINGLE
ZONE ☒MULTIPLE
ZONE ☐

2. NAME OF OPERATOR

POGO PRODUCING CO

(RICHARD WRIGHT)

3. ADDRESS AND TELEPHONE NO.

P.O. Box 10340 MIDLAND, TX 79702 Phone (915) 682-6822

4. LOCATION OF WELL (Report location clearly and in accordance with any State requirements*)

At surface

1650' FNL & 1650' FEL SEC. 4 T22S-R31E EDDY CO. NM

At proposed prod. zone
same

14. DISTANCE IN MILES AND DIRECTION FROM NEAREST TOWN OR POST OFFICE*

APPROXIMATELY 30 MILES EAST OF CARLSBAD, N.M.

15. DISTANCE FROM PROPOSED*

LOCATION TO NEAREST
PROPERTY OR LEASE LINE, FT.
(Also to nearest drlg. unit line, if any)

1650'

16. NO. OF ACRES IN LEASE

320

17. NO. OF ACRES ASSIGNED
TO THIS WELL

40

18. DISTANCE FROM PROPOSED LOCATION*

TO NEAREST WELL, DRILLING, COMPLETED,
OR APPLIED FOR, ON THIS LEASE, FT.

1320'

19. PROPOSED DEPTH

8150'

20. ROTARY OR CABLE TOOLS

ROTARY

21. ELEVATIONS (Show whether DF, RT, GR, etc.)

3450' GR.

22. APPROX. DATE WORK WILL START*

AS SOON AS APPROVED

SECRETARY'S POTASH

R-111-P POTASH

CARLSBAD CONTROLLED WATER BASIN

SIZE OF HOLE	GRADE, SIZE OF CASING	WEIGHT PER FOOT	SETTING DEPTH	QUANTITY OF CEMENT
25"	20" Conductor	NA	40'	Cement to surface w/Redi-Mix
14-3/4"	H-40 10-3/4"	32.7	650' 550'	400 sx Circulate to surface
9-7/8"	J-55 7-5/8"	26.4	4000'	1000 sx " " " " " "
6-3/4"	J-55 4-1/2"	11.6	8150'	1500 sx " " " " " "

1. Drill 25" hole to 40'. Set 40' of 20" conductor pipe. Cement to surface with Redi-Mix.
2. Drill 14-3/4" hole to 550'. Run & set 550' of 10-3/4" H-40 32.7# ST&C casing. Cement with 250 sx of 35/65 Class "C" POZ light + 2% CaCl, tail in with 150 sx Class "C" + 2% CaCl. Circulate cement to surface.
3. Drill 9-7/8" hole to 4000'. Run & set 4000' of 7-5/8" J-55 26.4 ST&C casing. Cement with 800 sx 35/65 Class "C" POZ + 5# Salt/sx. Tail in with 200 sx Class "C" + 2% CaCl. Circulate cement to surface.
4. Drill 6-3/4" hole to 8150'. Run & set 8150' of 4 1/2" J-55 11.6# ST&C casing. Cement in three stages: 1st stage: 500 sx Class "H" + 5% Micro Bond. 2nd stage: 400 sx Class "C" 12# Gilsonite/sx. 3rd stage: 500 sx Class "C" Halco light, tail in with 100 sx Class "C" neat. Circulate cement to surface.

APPROVAL SUBJECT TO
GENERAL REQUIREMENTS AND
SPECIAL STIPULATIONS
ATTACHED

IN ABOVE SPACE DESCRIBE PROPOSED PROGRAM: If proposal is to deepen, give data on present productive formation, rock type, and depth. If proposal is to drill or deepen directionally, give pertinent data on subsurface locations and measured and true vertical depths. Give blowout prevention program, if any.

24.

SIGNED

Joe T. Garcia

TITLE

AGENT

DATE 04/21/97

(This space for Federal or State office use)

PERMIT NO.

APPROVAL DATE

Posted ID-1

H & RPT

7-25-97

Application approval does not warrant or certify that the applicant holds legal or equitable title to those rights in the subject lease which would entitle the applicant to conduct operations thereon.
CONDITIONS OF APPROVAL, IF ANY:

APPROVED BY

Richard A. Whitley

TITLE

Acting State Director

DATE

7/10/97

*See Instructions On Reverse Side

DISTRICT I
P.O. Box 1980, Hobbs, NM 88241-1980

DISTRICT II
P.O. Drawer DD, Artesia, NM 88211-0719

DISTRICT III
1000 Rio Brazos Rd., Aztec, NM 87410

DISTRICT IV
P.O. Box 2088, Santa Fe, NM 87504-2088

State of New Mexico
Energy, Minerals and Natural Resources Department

Form C-102
Revised February 10, 1994
Submit to Appropriate District Office
State Lease - 4 Copies
Fee Lease - 3 Copies

OIL CONSERVATION DIVISION

P.O. Box 2088
Santa Fe, New Mexico 87504-2088

☐ AMENDED REPORT

WELL LOCATION AND ACREAGE DEDICATION PLAT

API Number	Pool Code	Pool Name
		TRIPLE "P" DELAWARE
Property Code 17955	Property Name LOST TANK "4" FEDERAL	Well Number 6
OGRID No. 17891	Operator Name POGO PRODUCING COMPANY	Elevation 3450

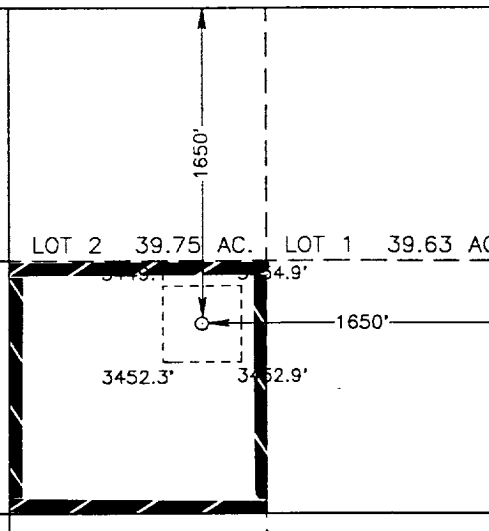
Surface Location

UL or lot No.	Section	Township	Range	Lot Idn	Feet from the	North/South line	Feet from the	East/West line	County
G	4	22 S	31 E		1650	NORTH	1650	EAST	EDDY

Bottom Hole Location If Different From Surface

UL or lot No.	Section	Township	Range	Lot Idn	Feet from the	North/South line	Feet from the	East/West line	County
Dedicated Acres 40	Joint or Infill	Consolidation Code	Order No.						

NO ALLOWABLE WILL BE ASSIGNED TO THIS COMPLETION UNTIL ALL INTERESTS HAVE BEEN CONSOLIDATED
OR A NON-STANDARD UNIT HAS BEEN APPROVED BY THE DIVISION

LOT 4 39.97 AC.	LOT 3 39.85 AC.	LOT 2 39.75 AC.	LOT 1 39.63 AC.
			

OPERATOR CERTIFICATION

I hereby certify the the information contained herein is true and complete to the best of my knowledge and belief.

Joe T. Janica
Signature
Joe T. Janica
Printed Name
Agent
Title
04/21/97
Date

SURVEYOR CERTIFICATION

I hereby certify that the well location shown on this plat was plotted from field notes of actual surveys made by me or under my supervision, and that the same is true and correct to the best of my belief.

APRIL 9, 1997

Date Surveyed JLP
Signature & Seal
Professional Surveyor
NEW MEXICO
3239
4-16-97
W.O. Num 97-110644
Certificate No. JOHN WEST, 676
ROMAN EIDSON, 3239
G. EIDSON, 12641

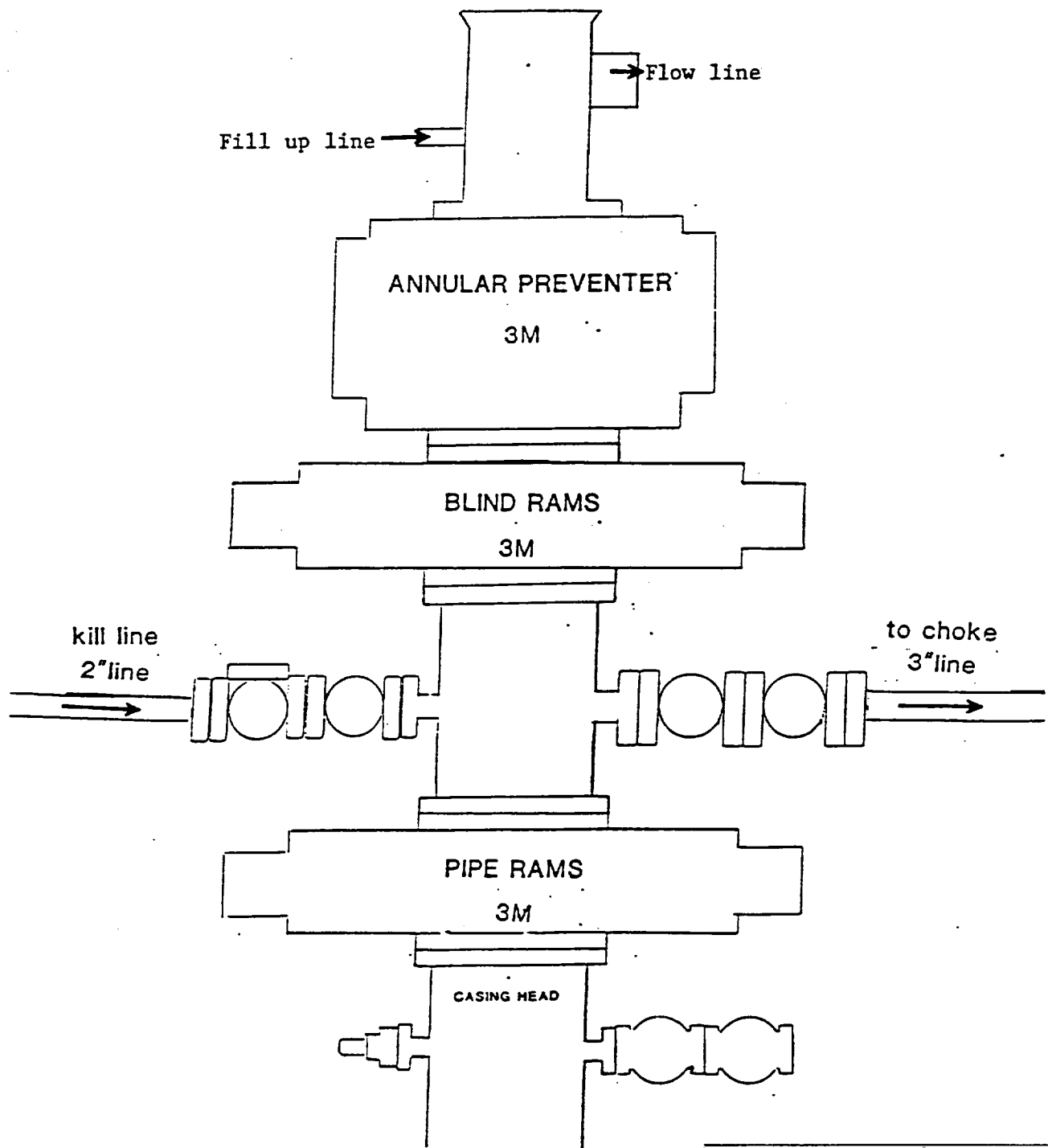


EXHIBIT "E"
B.O.P. SKETCH TO BE USED ON

POGO PRODUCING COMPANY
LOST TANK "4" FEDERAL #6
UNIT "G" SECTION 4
T22S-R31E EDDY CO. NM

POGO PRODUCING CO 3M CHOKE MANIFOLD

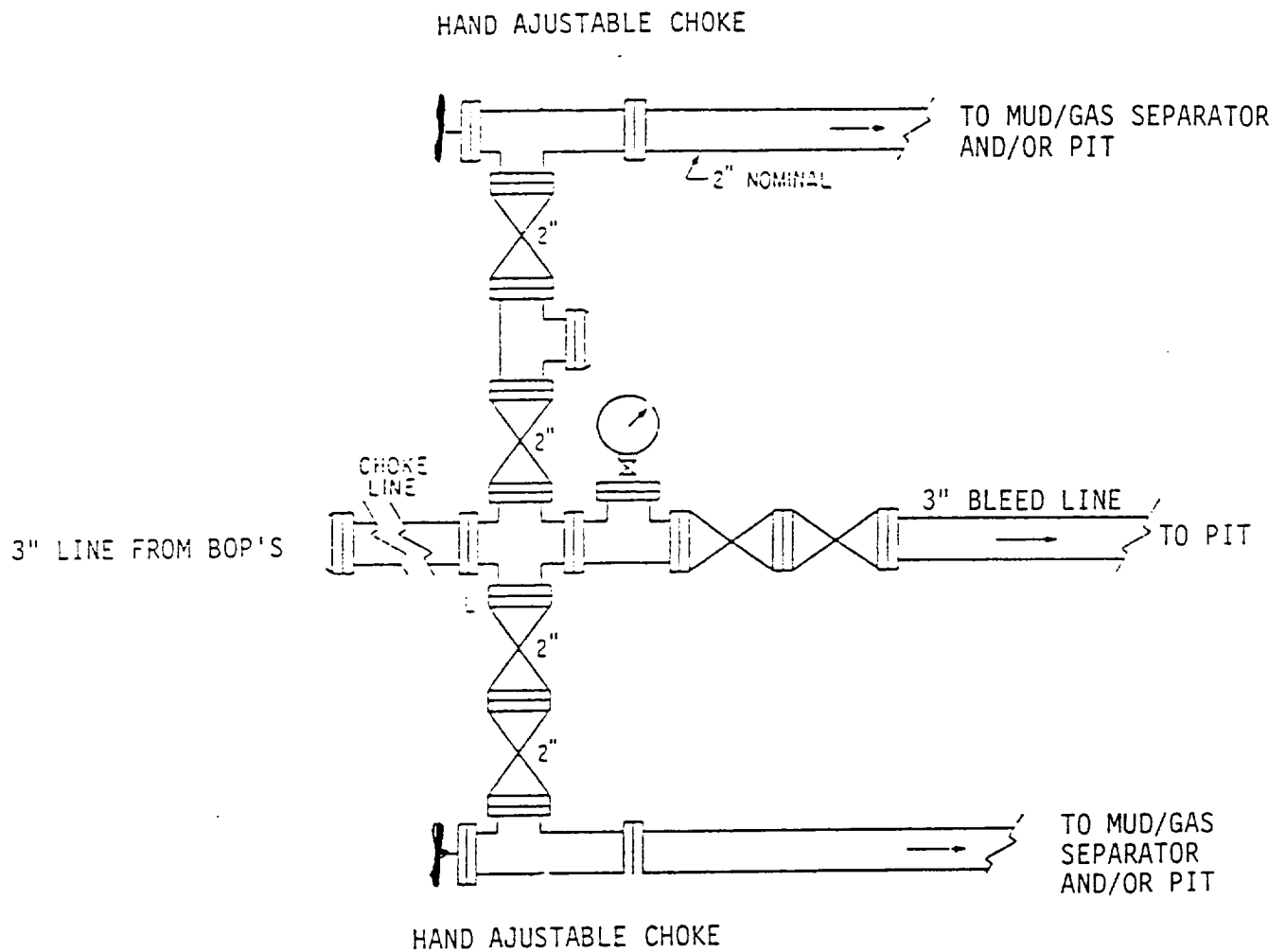


EXHIBIT "I-E"
CHOKE MANIFOLD & CLOSING UNIT

POGO PRODUCING COMPANY
LOST TANK "4" FEDERAL #6
UNIT "G" SECTION 4
T22S P31E EDDY CO. NM