

**DISTRICT I**  
P. O. Box 1980  
Hobbs, NM 88241-1980

State of New Mexico  
Department of Energy, Minerals, and Natural Resources

Form C-102  
Revised 02-10-94  
Instructions on back

**DISTRICT II**  
P. O. Drawer DD  
Artesia, NM 88211-0719

**OIL CONSERVATION DIVISION**  
P. O. Box 2088  
Santa Fe, New Mexico 87504-2088

Submit to the Appropriate  
District Office  
State Lease - 4 copies  
Fee Lease - 3 copies

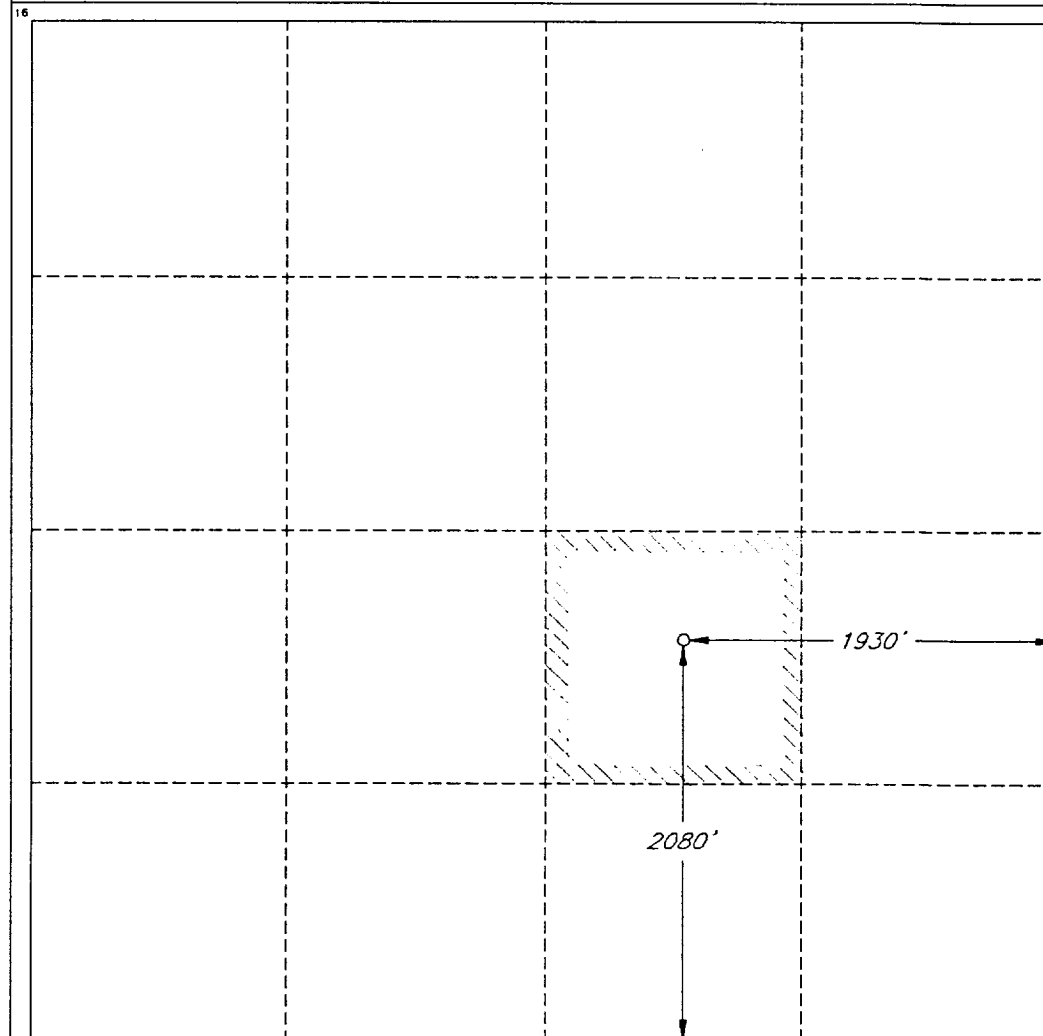
☐ AMENDED REPORT

**DISTRICT III**  
1000 Rio Brazos Rd.  
Aztec, NM 87410

**DISTRICT IV**  
P. O. Box 2088  
Santa Fe, NM 87507-2088

**WELL LOCATION AND ACREAGE DEDICATION PLAT**

1 API Number		2 Pool Code		3 Pool Name Cedar Canyon Bone Spring					
4 Property Code		5 Property Name H B '11' FEDERAL						6 Well Number 11	
7 OGRID No.		8 Operator Name SANTA FE ENERGY RESOURCES, INC.						9 Elevation 3040'	
10 SURFACE LOCATION									
UL or lot no. J	Section 11	Township 24 SOUTH	Range 29 EAST, N.M.P.M.	Lot 1da	Feet from the 2080'	North/South line SOUTH	Feet from the 1930'	East/West line EAST	County EDDY
"BOTTOM HOLE LOCATION IF DIFFERENT FROM SURFACE									
UL or lot no.	Section	Township	Range	Lot 1da	Feet from the	North/South line	Feet from the	East/West line	County
12 Dedicated Acres 40		13 Joint or Infill		14 Consolidation Code		15 Order No.			
NO ALLOWABLE WELL BE ASSIGNED TO THIS COMPLETION UNTIL ALL INTERESTS HAVE BEEN CONSOLIDATED OR A NON-STANDARD UNIT HAS BEEN APPROVED BY THE DIVISION									



**OPERATOR CERTIFICATION**

I hereby certify that the information contained herein is true and complete to the best of my knowledge and belief.

Signature *James P. "Phil" Stinson*

Printed Name

James P. "Phil" Stinson

Title

Agent for Santa Fe Energy

Date

6-6-97

**SURVEYOR CERTIFICATION**

I hereby certify that the well location shown on this plat was plotted from field notes of actual surveys made by me or under my supervision, and that the same is true and correct to the best of my belief.

Date of Survey  
MAY 19, 1997

Signature and Seal of Professional Surveyor

*Roger M. Robbins*

Certificate No. 7073310  
ROGER M. ROBBINS P.S. #12128

JOB #51885 / 23 NW / VHB