

DISTRICT I
P.O. Box 1980, Hobbs, NM 88241-1980

State of New Mexico
Energy, Minerals and Natural Resources Department

Form C-102
Revised February 10, 1994
Submit to Appropriate District Office
State Lease - 4 Copies
Fee Lease - 3 Copies

DISTRICT II
P.O. Drawer DD, Artesia, NM 88211-0719

OIL CONSERVATION DIVISION
P.O. Box 2088
Santa Fe, New Mexico 87504-2088

DISTRICT III
1600 Rio Brazos Rd., Asteo, NM 87410

AMENDED REPORT

DISTRICT IV
P.O. Box 2088, Santa Fe, NM 87504-2088

WELL LOCATION AND ACREAGE DEDICATION PLAT

API Number <i>30-215-29859</i>	Pool Code 96582	Pool Name <i>W Lost Tank</i> Triple "P" Delaware
Property Code 20943	Property Name LOST TANK "3" FEDERAL	Well Number 3
OGRID No. 17891	Operator Name POGO PRODUCING COMPANY	Elevation 3482

Surface Location

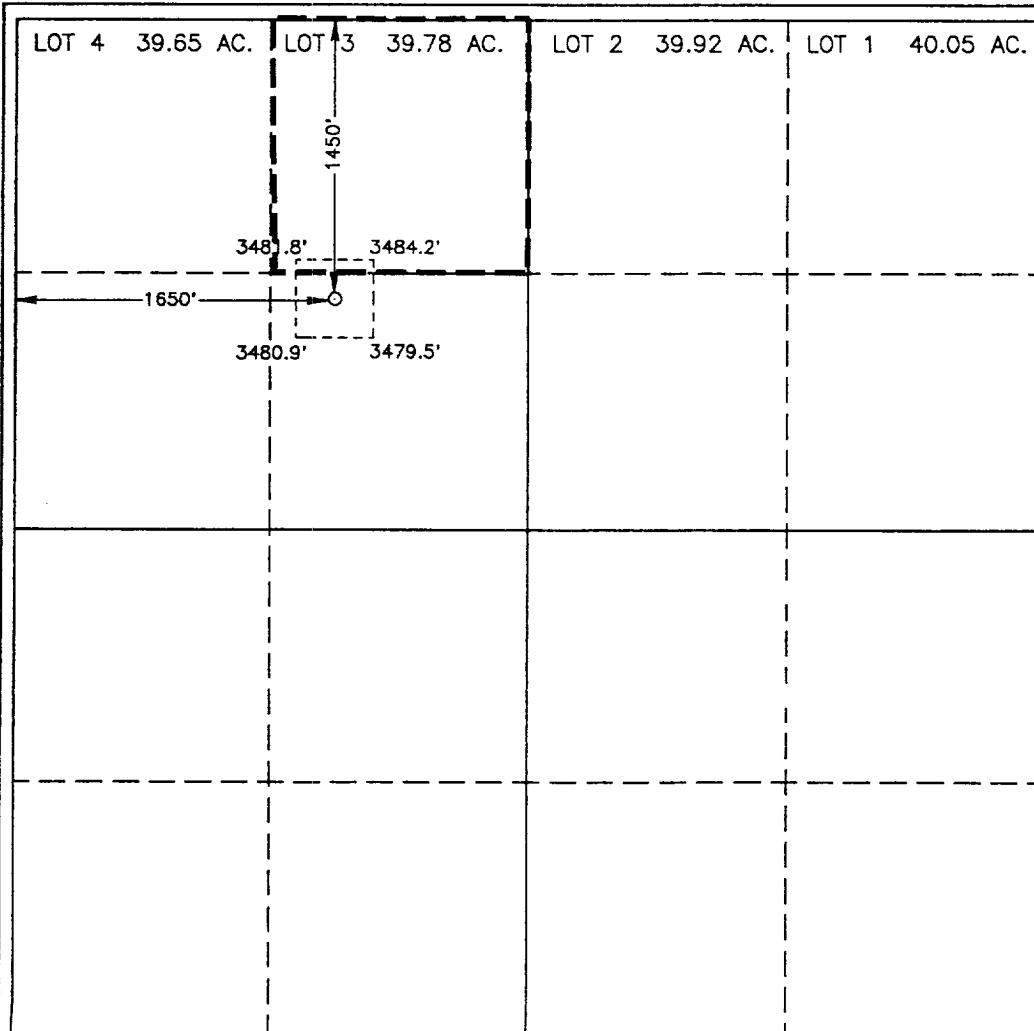
UL or lot No.	Section	Township	Range	Lot Idn	Feet from the	North/South line	Feet from the	East/West line	County
F	3	22 S	31 E		1450	NORTH	1650	WEST	EDDY

Bottom Hole Location If Different From Surface

UL or lot No.	Section	Township	Range	Lot Idn	Feet from the	North/South line	Feet from the	East/West line	County

Dedicated Acres 40	Joint or Infill	Consolidation Code	Order No.
-----------------------	-----------------	--------------------	-----------

NO ALLOWABLE WILL BE ASSIGNED TO THIS COMPLETION UNTIL ALL INTERESTS HAVE BEEN CONSOLIDATED OR A NON-STANDARD UNIT HAS BEEN APPROVED BY THE DIVISION



OPERATOR CERTIFICATION

I hereby certify the the information contained herein is true and complete to the best of my knowledge and belief.

Joe T Janica
Signature
Joe T. Janica
Printed Name
Agent
Title
July 14, 1997
Date

SURVEYOR CERTIFICATION

I hereby certify that the well location shown on this plat was plotted from field notes of actual surveys made by me or under my supervision, and that the same is true and correct to the best of my belief.

JUNE 11, 1997
Date Surveyed

Ronald J. Eidson
Signature
Professional Surveyor
JLP

NEW MEXICO
Professional Surveyor
7-14-97
W.O. Num. 97-10-1165

Certificate No. JOHN W. WEST, 676
RONALD J. EIDSON, 3239
G. EIDSON, 12641