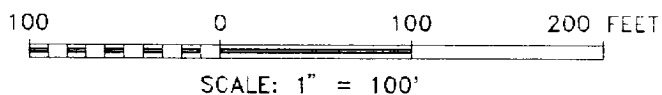
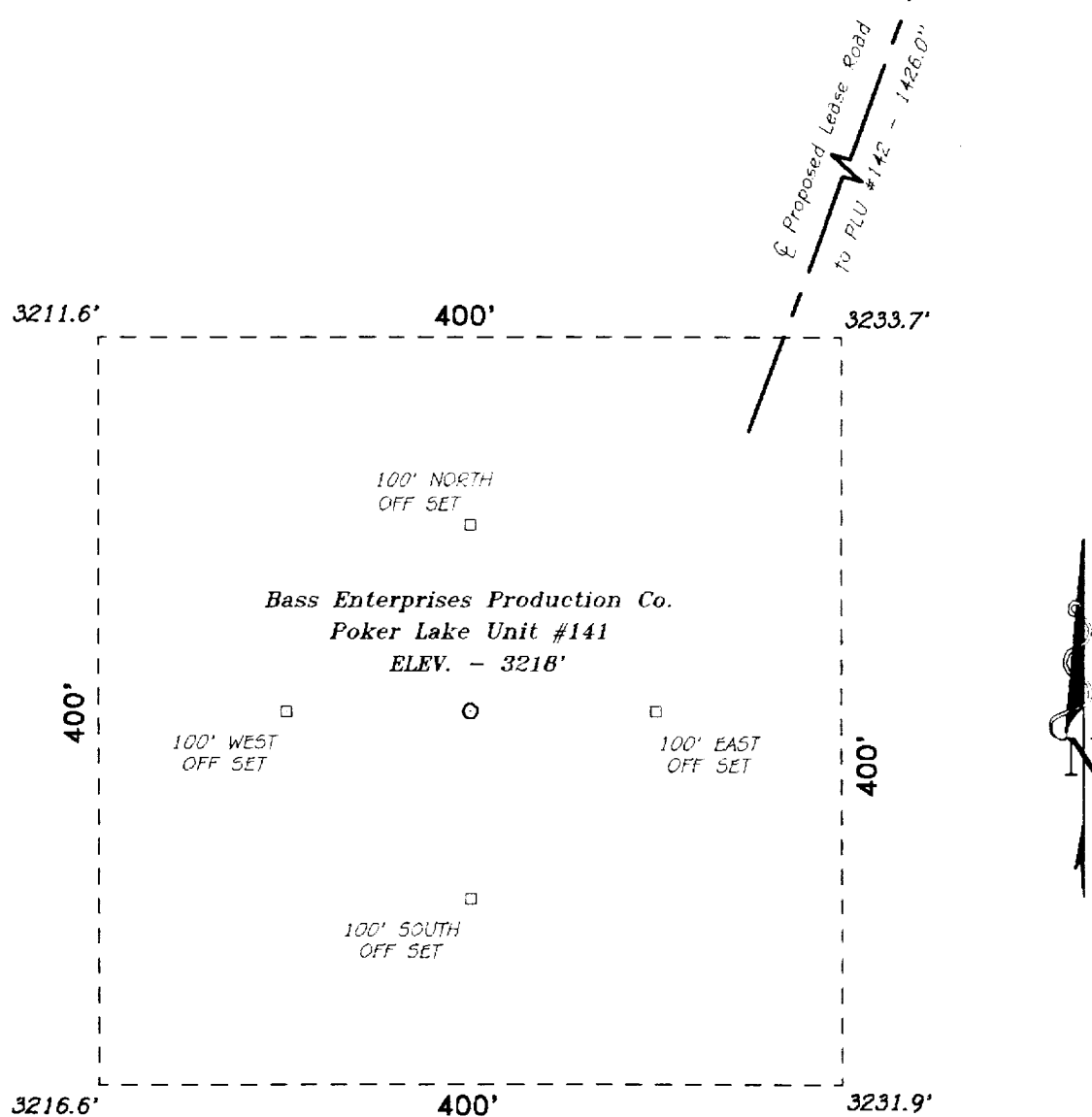


SECTION 32, TOWNSHIP 23 SOUTH, RANGE 30 EAST, N.M.P.M.,
EDDY COUNTY, NEW MEXICO.



BASS ENTERPRISES PRODUCTION CO.

REF: Poker Lake Unit No. 141 / Well Pad Topo

THE POKER LAKE UNIT No. 141 LOCATED 1980' FROM THE
SOUTH LINE AND 660' FROM THE WEST LINE OF
SECTION 32, TOWNSHIP 23 SOUTH, RANGE 30 EAST,
N.M.P.M., EDDY COUNTY, NEW MEXICO.

BASIN SURVEYS P.O. BOX 1786-HOBBS, NEW MEXICO

W.O. Number: 7498

Drawn By: S.C. NICHOLS

Date: 08-26-97

Disk: SCN #39 - 7498BB.DWG

Survey Date: 08-22-97

Sheet 1 of 1 Sheets