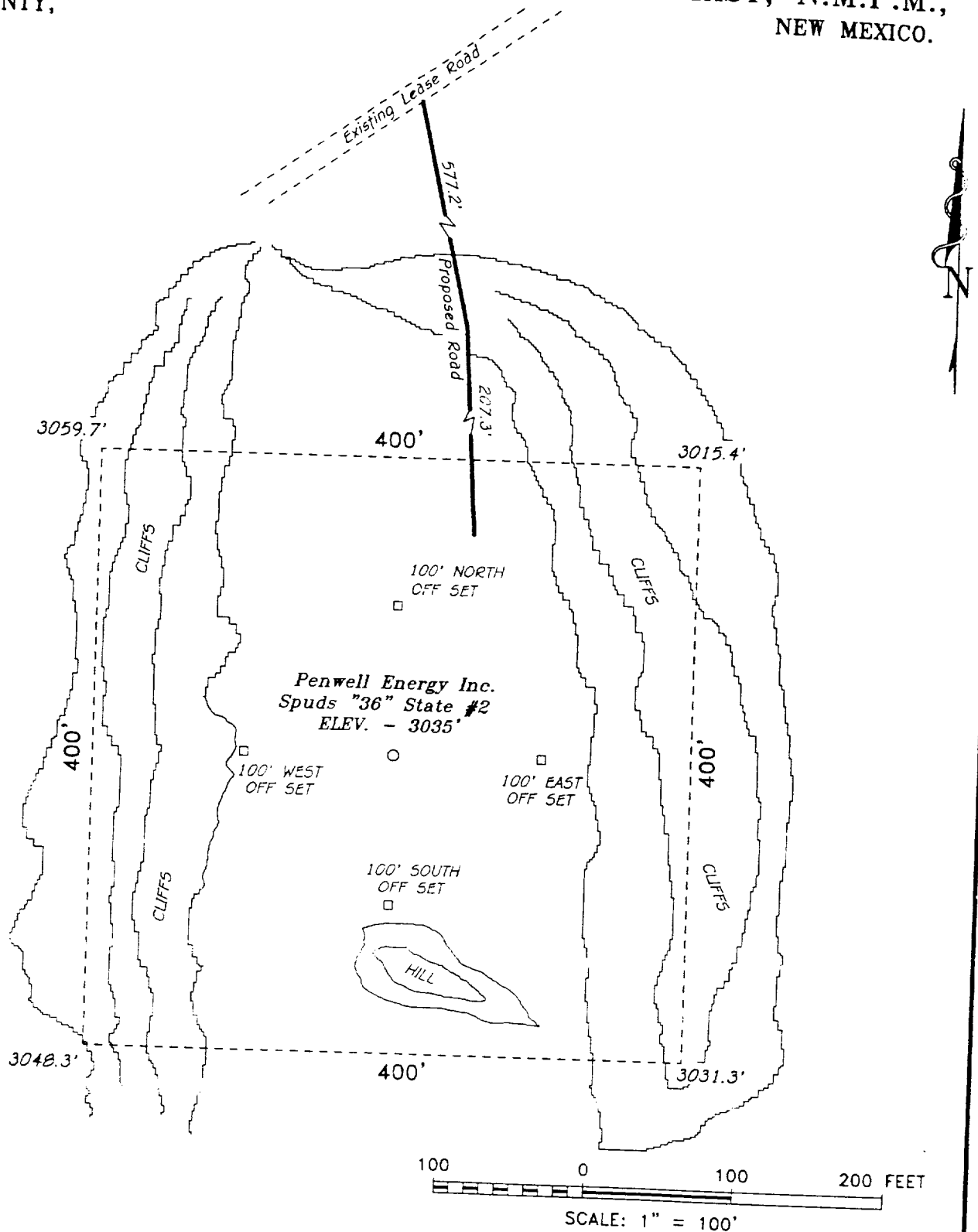


SECTION 36, TOWNSHIP 24 SOUTH, RANGE 29 EAST, N.M.P.M.,
EDDY COUNTY, NEW MEXICO.



Penwell Energy Inc.

REF: Spuds "36" State No. 2 / Well Pad Topo

THE SPUDS "36" STATE No. 2 LOCATED 1880' FROM THE
NORTH LINE AND 460' FROM THE WEST LINE OF
SECTION 36, TOWNSHIP 24 SOUTH, RANGE 29 EAST,
N.M.P.M., EDDY COUNTY, NEW MEXICO.

Basin Surveys P.O. BOX 1786-HOBBS, NEW MEXICO

W.O. Number: 8131 Drawn By: K. GOAD

Date: 03-11-98 Disk: KJG #97 - 8131A.DWG

Survey Date: 03-04-98