

SUBMIT IN TRIPLICATE*

(Other instructions on
reverse side)

FORM APPROVED

Expires: February 28, 1995

UNITED STATES
DEPARTMENT OF THE INTERIOR
BUREAU OF LAND MANAGEMENT

APPLICATION FOR PERMIT TO DRILL OR DEEPEN

1a. TYPE OF WORK

DRILL ☒

DEEPEN ☐

b. TYPE OF WELL

Oil Well ☒

Gas Well ☐

Other ☐

Single Zone ☐

Multiple Zone ☐

2. Name of Operator

Bass Enterprises Production Company

3. Address and Telephone No.

P.O. Box 2760, Midland, TX 79702 (915) 683-2277

4. Location of Well (Report location clearly and in accordance with any State requirements.)*

At Surface

2310' FSL & 330' FEL, Section 31, T23S, R30E, Unit letter I

At proposed prod. zone

Same

14. Distance in miles and direction from nearest town or Post Office*

14.0 miles east from Malaga, NM

15. Distance from proposed*

Location to nearest

Property or lease line, ft.

330'

(Also to nearest drlg. unit line, if any)

16. No. of acres in Lease

480

17. No. of Acres assigned
to this Well

40

18. Distance from proposed location*

to nearest well, drilling, completed,

NA

First Well

or applied for, on this Lease, ft.

19. Proposed Depth

7650'

20. Rotary or Cable Tools

Rotary

21. Elevations (Show whether DF, RT, GR, etc.)

3184' GR

22. Approx. date work will start*

Upon approval

23.

PROPOSED CASING AND CEMENTING PROGRAM

SIZE OF HOLE	GRADE, SIZE OF CASING	WEIGHT PER FOOT	SETTING DEPTH	QUANTITY OF CEMENT
* 11"	8-5/8" WC-50	28#	525'	220 sx (Circ to surface)
** 7-7/8"	5 1/2" K-55	15.50#	7650'	615 sx ** TOC @ 3000' (500' above the Ramsey Sand)

This well is inside the Secretary's Potash Area and outside the R-111-P Potash Area.

There is no potash leases within 1 mile of location.

* Surface casing to be set into Rustler below all fresh water sands.

** Cement will be placed 500' above the upper most hydrocarbon bearing zone (Ramsey Sand @ 3505')

APPROVAL SUBJECT TO
GENERAL REQUIREMENTS AND
SPECIAL STIPULATIONS
ATTACHED

IN ABOVE SPACE DESCRIBE PROPOSED PROGRAM: If proposal is to deepen, give data on present productive zone and proposed new productive zone. If proposal is to drill or deepen directionally, give pertinent data on subsurface locations and measured and true vertical depths. Give blowout prevention program, if any.

24.

Signed William R. Dannels W. R. Dannels

Title Division Drilling Supt.

Date 4-17-98

(This space for Federal or State office use)

Permit No. _____

Approval Date _____

Application approval does not warrant or certify that the applicant holds legal or equitable title to those rights in the subject lease which would entitle the applicant to conduct operations thereon.

CONDITIONS OF APPROVAL, IF ANY:

Approved by [Signature] Title [Signature] Date [Signature]

*See Instruction on Reverse Side

Title 18 U.S.C., Section 1001, makes it a crime for any person knowingly and willfully to make to any department or agency of the United States any false, fictitious or fraudulent statements or representations as to any matter within its jurisdiction

DISTRICT I
P.O. Box 1980, Hobbs, NM 88240

DISTRICT II
P.O. Drawer DD, Artesia, NM 88210

DISTRICT III
1000 Rio Brazos Rd., Aztec, NM 87410

State of New Mexico
Energy, Minerals and Natural Resources Department

Form C-102
Revised February 10, 1994
Instruction on back
Submit to Appropriate District Office
State Lease - 4 Copies
Fee Lease - 3 Copies

OIL CONSERVATION DIVISION

P.O. Box 2088
Santa Fe, New Mexico 87504-2088

☐ AMENDED REPORT

WELL LOCATION AND ACREAGE DEDICATION PLAT

API Number	Pool Code	Pool Name
		NASH DRAW (DELAWARE)
Property Code	Property Name	Well Number
	POKER LAKE UNIT	144
OGRID No. 001801	Operator Name	Elevation
	BASS ENTERPRISES PRODUCTION COMPANY	3184'

Surface Location

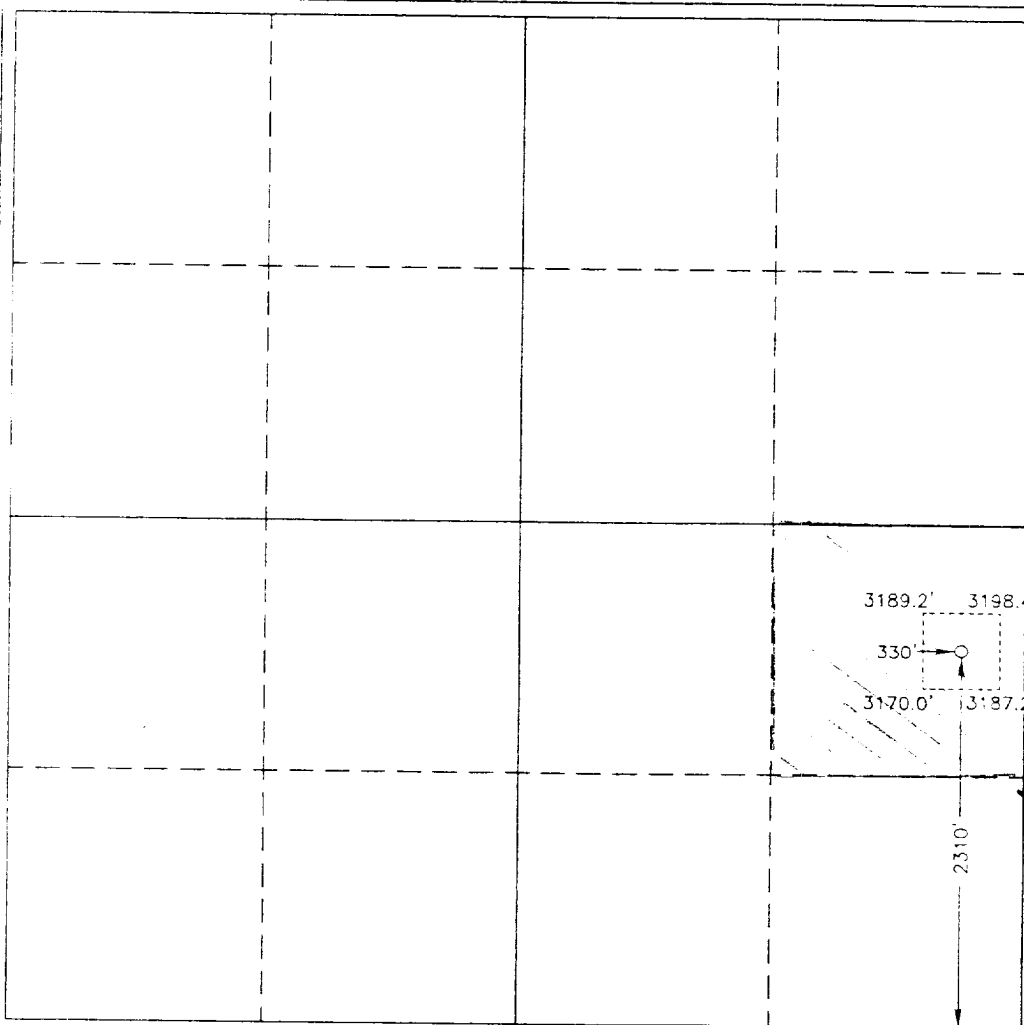
UL or lot No.	Section	Township	Range	Lot Idn	Feet from the	North/South line	Feet from the	East/West line	County
1	31	23 S	30 E		2310	SOUTH	330	EAST	EDDY

Bottom Hole Location If Different From Surface

UL or lot No.	Section	Township	Range	Lot Idn	Feet from the	North/South line	Feet from the	East/West line	County

Dedicated Acres	Joint or Infill	Consolidation Code	Order No.
40	N		

NO ALLOWABLE WILL BE ASSIGNED TO THIS COMPLETION UNTIL ALL INTERESTS HAVE BEEN CONSOLIDATED
OR A NON-STANDARD UNIT HAS BEEN APPROVED BY THE DIVISION



OPERATOR CERTIFICATION

I hereby certify the the information
contained herein is true and complete to the
best of my knowledge and belief.

William R. Dannels
Signature

W. R. Dannels
Printed Name

Division Drlg. Supt.
Title

April 7, 1998
Date

SURVEYOR CERTIFICATION

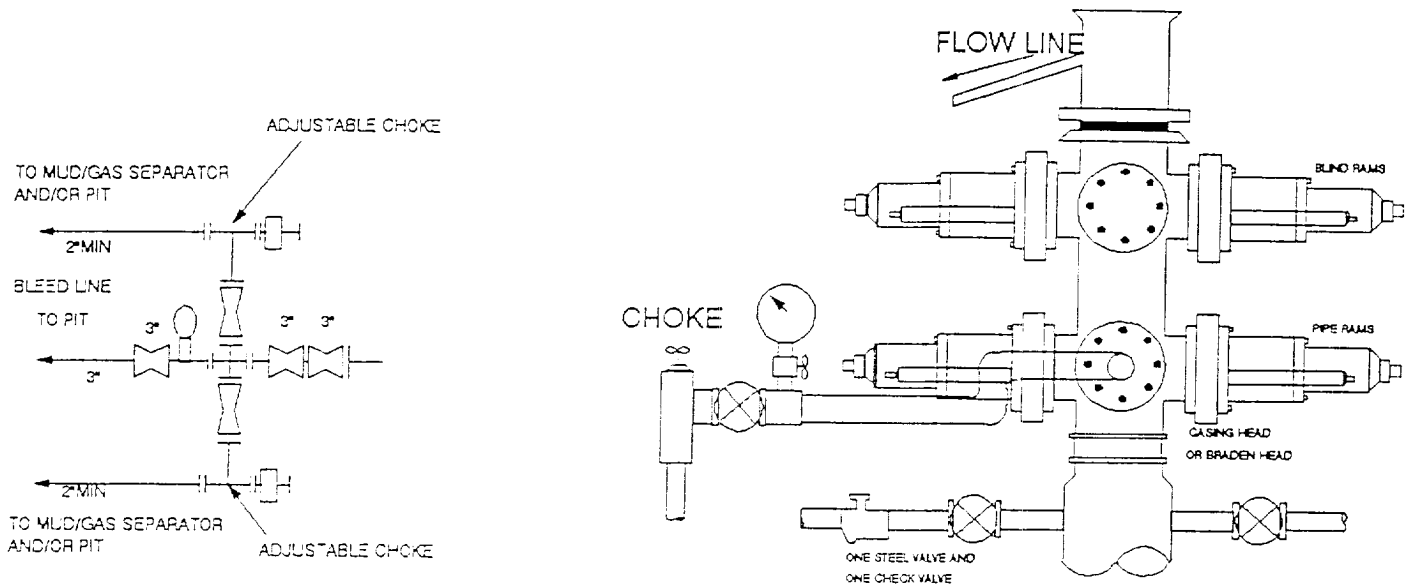
I hereby certify that the well location shown
on this plat was plotted from field notes of
actual surveys made by me or under my
supervision, and that the same is true and
correct to the best of my belief.

March 12, 1998

Date Surveyed
Signature of
Professional Surveyor

[Signature]
NEW MEXICO
W.O. No. 87095
Certificate No. 7977
PROFESSIONAL LAND SURVEYOR
BASIN SURVEYS

3000 PSI WP



THE FOLLOWING CONSTITUTE MINIMUM BLOWOUT PREVENTER REQUIREMENTS

- A. One double gate blowout preventer with lower rams for pipe and upper rams blind, all hydraulically controlled.
- B. Opening on preventers between rams to be flanged, studded or clamped and at least two inches in diameter.
- C. All connections from operating manifold to preventers to be all steel hose or tube a minimum of one inch in diameter.
- D. The available closing pressure shall be at least 15% in excess of that required with sufficient volume to operate (close, open, and re-close) the preventers.
- E. All connections to and from preventers to have a pressure rating equivalent to that of the BOP's.
- F. Manual controls to be installed before drilling cement plug.
- G. Valve to control flow through drill pipe to be located on rig floor.
- H. All chokes will be adjustable. Choke spool may be used between rams.