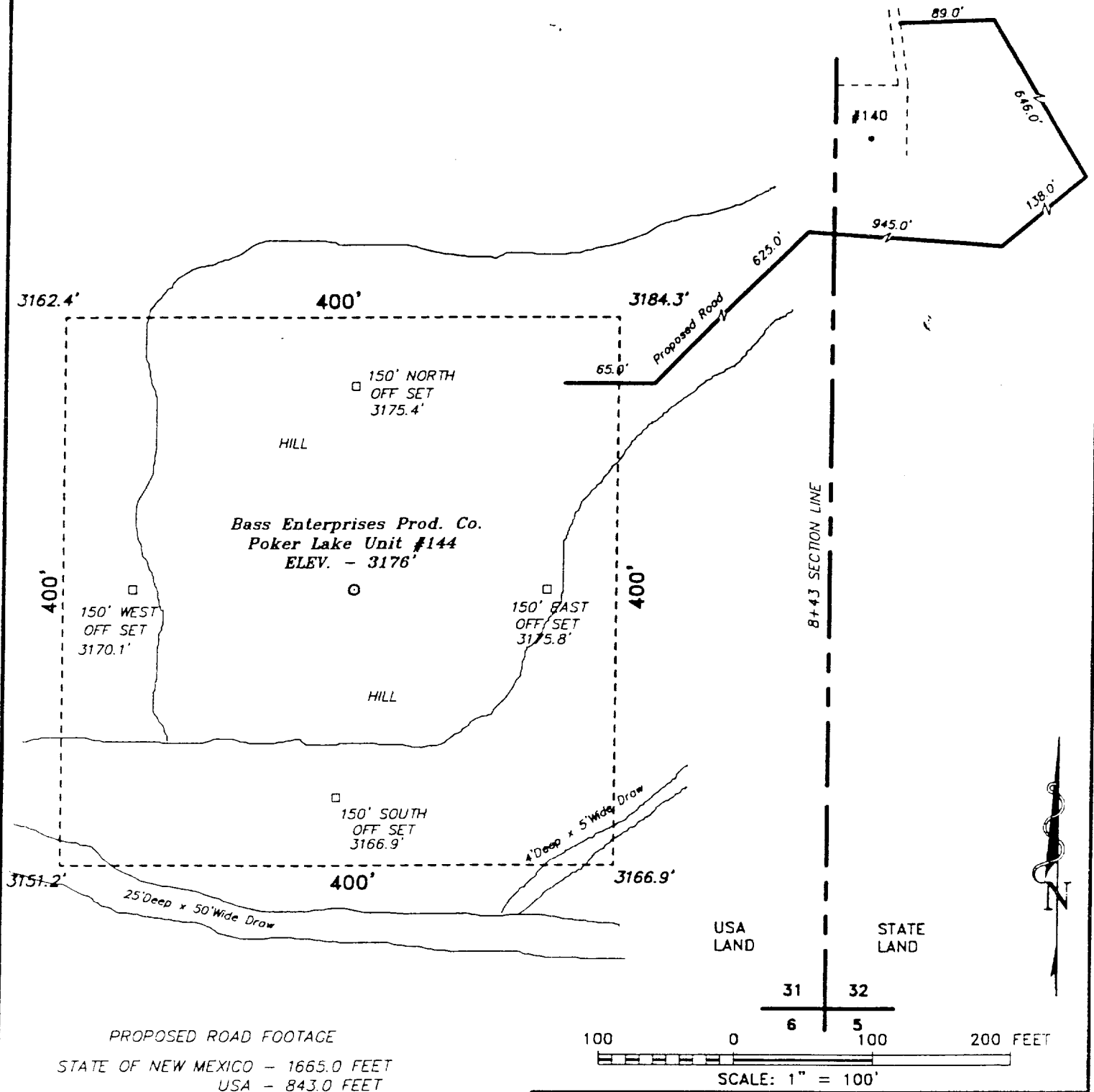


SECTION 31, TOWNSHIP 23 SOUTH, RANGE 30 EAST, N.M.P.M.,  
EDDY COUNTY, NEW MEXICO.



**BASIN SURVEYS** P.O. BOX 1786 - HOBBS, NEW MEXICO

N.O. Number: 9262 Drawn By: K. GOAD

Date: 07-28-99 Disk: KJG #121 - 9262A.DWG

**BASS ENTERPRISES PROD. CO.**

REF: Poker Lake Unit No. 144 / Well Pad Topo

THE POKER LAKE UNIT No. 144 LOCATED 2310' FROM THE  
SOUTH LINE AND 810' FROM THE EAST LINE OF  
SECTION 31, TOWNSHIP 23 SOUTH, RANGE 30 EAST,  
N.M.P.M., EDDY COUNTY, NEW MEXICO.

Survey Date: 07-27-99 Sheet 1 of 1 Sheets