

District I
PO Box 1980, Hobbs, NM 88241-1980

District II
811 South First, Artesia, NM 88210

District III
1000 Rio Brazos Rd., Aztec, NM 87410

District IV
2040 South Pacheco, Santa Fe, NM 87505

State of New Mexico
Energy, Minerals & Natural Resources Department

OIL CONSERVATION DIVISION
2040 South Pacheco
Santa Fe, NM 87505

Form C-101
Revised October 18, 1994
Instructions on back
Submit to Appropriate District Office
State Lease - 6 Copies
Fee Lease - 5 Copies

☐ AMENDED REPORT

APPLICATION FOR PERMIT TO DRILL, RE-ENTER, DEEPEN, PLUGBACK, OR ADD A ZONE

Operator Name and Address Pogo Producing Company P. O. Box 10340, Midland, TX 79702		OGRID Number 017891
		API Number 30 - 015-00000 30614
Property Code 17569 15	Property Name Harroun "15"	Well No. 6

Surface Location

UL or lot no.	Section	Township	Range	Lot Idn	Feet from the	North/South line	Feet from the	East/West Line	County
G	15	24S	29E		1650	North	1650	East	Eddy

Proposed Bottom Hole Location If Different From Surface

UL or lot no.	Section	Township	Range	Lot Idn	Feet from the	North/South line	Feet from the	East/West Line	County
Proposed Pool 1 Pierce Crossing, Bone Spring, East 96473					Proposed Pool 2				

Work Type Code N	Well Type Code O	Cable/Rotary R	Lease Type Code S	Ground Level Elevation 2937
Multiple No	Proposed Depth 8000	Formation Bone Springs	Contractor To be selected	Spud Date Upon Approval

Proposed Casing and Cement Program

Hole Size	Casing Size	Casing weight/foot	Setting Depth	Sacks of Cement	Estimated TOC
17-1/2	13-3/8	54.5# J-55	500'	500 sx	Surface
12-1/4	8-5/8	24 & 32# J-55	3000'	900 sx	Surface
7-7/8	5-1/2	17# J-55	8000'	1200 sx	2000'
				Post ID-1 4-9-99	

Describe the proposed program. If this application is to DEEPEN or PLUG BACK give the data on the present productive zone and proposed new productive zone. Describe the blowout prevention program, if any. Use additional sheets if necessary.

This proposed well is a Delaware/Bone Springs test.

BOP sketch is attached.

I hereby certify that the information given above is true and complete to the best of my knowledge and belief.

Signature:

Printed name: Richard L. Wright

Title: Division Operations Manager

Date: 04-01-99

Phone: (915)685-8100

OIL CONSERVATION DIVISION

Approved By:

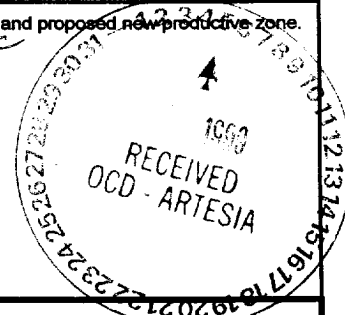
ORIGINAL SIGNED BY TIM W. GUM
DISTRICT II SUPERVISOR

Title:

Approval Date: 4-5-99

Expiration Date: 4-5-00

Conditions of Approval:
Attached: ☐



DISTRICT I

P.O. Box 1000, Hobbs, NM 88241-1000

DISTRICT II

F.O. Drawer DD, Artesia, NM 88211-0719

DISTRICT III

1000 Rio Bragos Rd., Artec, NM 87410

DISTRICT IV

P.O. Box 2088, Santa Fe, NM 87504-2088

State of New Mexico

Energy, Minerals and Natural Resources Department

Form C-102

Revised February 10, 1994

State Lease - 4 Copies

Fee Lease - 3 Copies

OIL CONSERVATION DIVISION

P.O. Box 2088

Santa Fe, New Mexico 87504-2088

☐ AMENDED REPORT

WELL LOCATION AND ACREAGE DEDICATION PLAT

API Number 30-015-29373		Pool Code 96473	Pool Name Pierce Crossing, East (B.S.)
Property Code 17569	Property Name HARROUN 15		Well Number 6
OGRID No. 017891	Operator Name POGO PRODUCING COMPANY		Elevation 2937

Surface Location

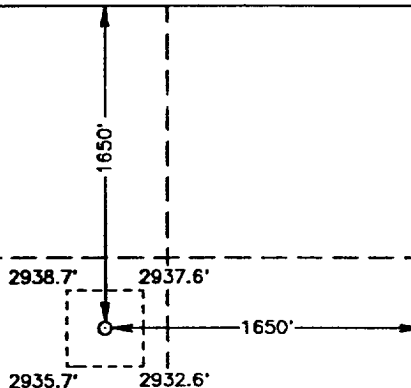
UL or lot No.	Section	Township	Range	Lot Idn	Feet from the	North/South line	Feet from the	East/West line	County
G	15	24 S	29 E		1650	NORTH	1650	EAST	EDDY

Bottom Hole Location If Different From Surface

UL or lot No.	Section	Township	Range	Lot Idn	Feet from the	North/South line	Feet from the	East/West line	County
---------------	---------	----------	-------	---------	---------------	------------------	---------------	----------------	--------

Dedicated Acres 40	Joint or Infill	Consolidation Code	Order No.
-----------------------	-----------------	--------------------	-----------

**NO ALLOWABLE WILL BE ASSIGNED TO THIS COMPLETION UNTIL ALL INTERESTS HAVE BEEN CONSOLIDATED
OR A NON-STANDARD UNIT HAS BEEN APPROVED BY THE DIVISION**



OPERATOR CERTIFICATION

I hereby certify the the information
contained herein is true and complete to the
best of my knowledge and belief.

Signature _____
James M.C. Ritchie, Jr.

Printed Name
Agent

Title _____
02/05/97
Date _____

SURVEYOR CERTIFICATION

I hereby certify that the well location shown on this plat was plotted from field notes of actual surveys made by me or under my supervision and that the same is true and correct to the best of my belief.

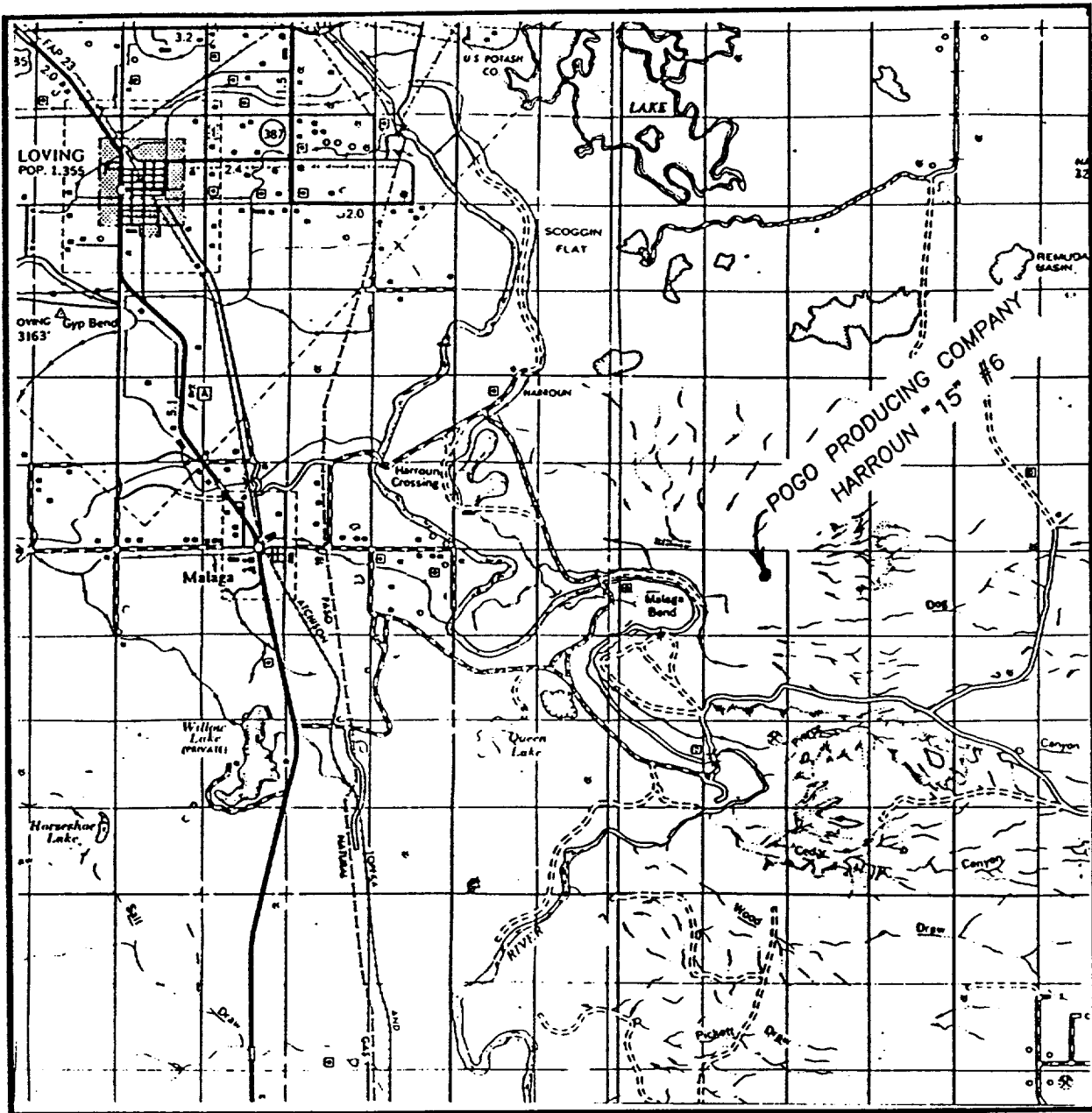
JANUARY 20, 1997

Date Surveyed _____ JLP
Signature & Seal _____
Professional Surveyor _____

NEW MEXICO JUN 21 1997
O. Num. 87-11-0110

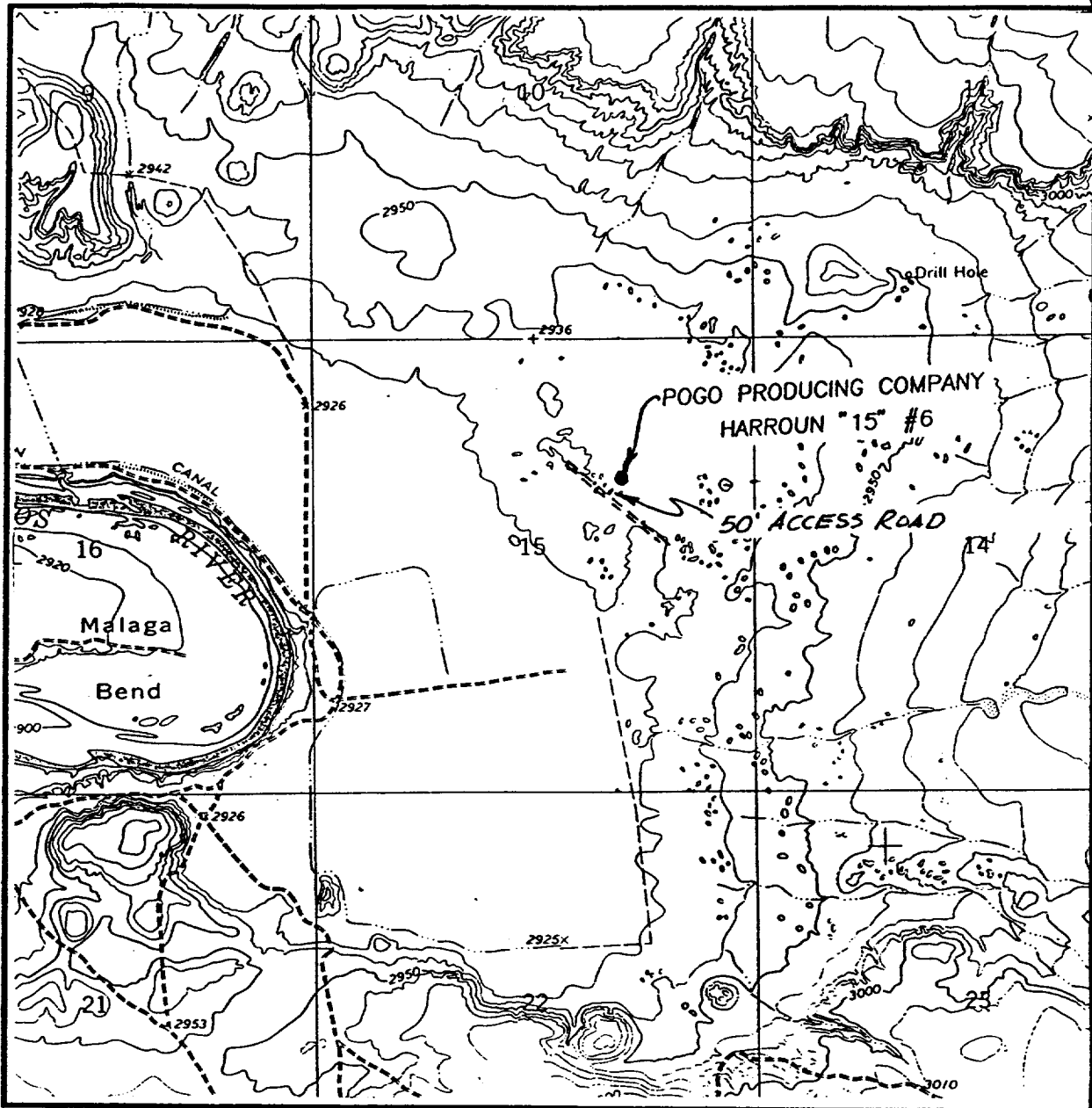
Certificate No.	JOHN W. WEST,	676
	RONALD J. EIDSON,	3239
	GARY G. EIDSON,	12641

VICINITY MAP



LOCATION VERIFICATION MAP

415



SCALE: 1" = 2000'

CONTOUR INTERVAL - 10'

SEC. 15 TWP. 24-S RGE. 29-E

SURVEY N.M.P.M.

COUNTY EDDY

DESCRIPTION 1650' FNL & 1650' FEL

ELEVATION 2937'

OPERATOR POGO PRODUCING COMPANY

LEASE HARROUN "15"

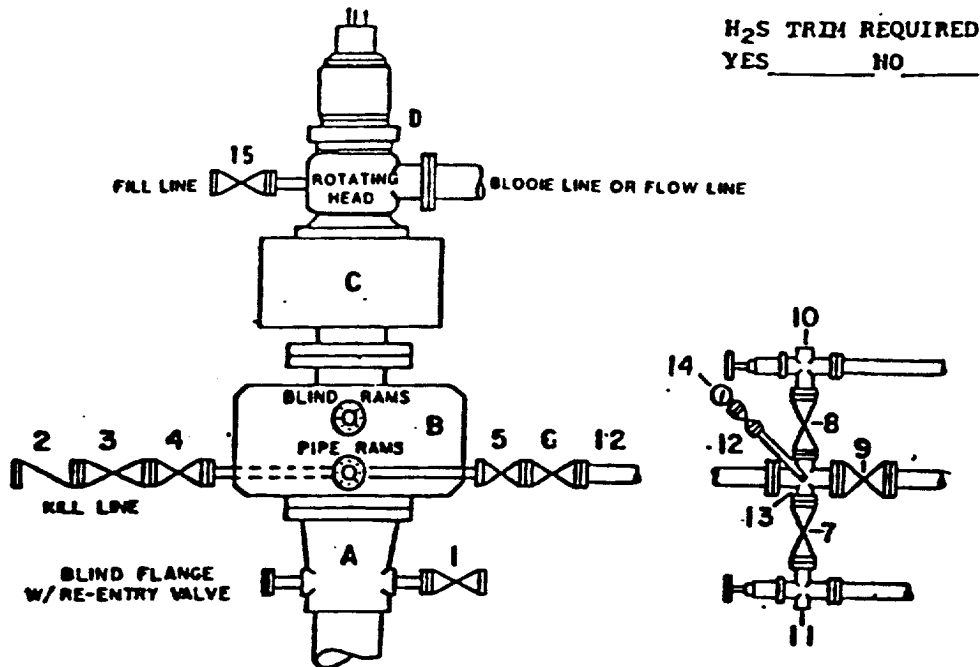
U.S.G.S. TOPOGRAPHIC MAP

PIERCE CANYON, N.M.

JOHN WEST ENGINEERING
HOBBS, NEW MEXICO

(505) 393-3117

DRILLING CONTROL **CONDITION III-B 3000 PSI WP**



H₂S TRIM REQUIRED
 YES _____ NO _____

DRILLING CONTROL **MATERIAL LIST - CONDITION III - B**

- | | |
|----------------|---|
| A | Wellhead |
| B | 3000# W.P. Dual ram type preventer, hydraulic operated with 1" steel, 3000# W.P. control lines (where sub-structure height is adequate, 2 - 3000# W.P. single ram preventers may be utilized with 3000# W.P. drilling spool with 2" minimum flanged outlet for kill line and 3" minimum flanged outlet for choke line. The drilling spool is to be installed below the single ram type preventers). |
| C | 3000# W.P. Annular Preventer with 1" steel, 3000# W.P. control lines. |
| D | Rotating Head with fill up outlet and extended Bore line. |
| 1,3,4,
7,8, | 2" minimum 3000# W.P. flanged full opening steel gate valve, or Malliburton Lo Torc Plug valve. |
| 2 | 2" minimum 3000# W.P. back pressure valve. |
| 5,6,9 | 3" minimum 3000# W.P. flanged full opening steel gate valve, or Malliburton Lo Torc Plug valve. |
| 12 | 3" minimum Schedule 80, Grade B, seamless line pipe. |
| 13 | 2" minimum x 3" minimum 3000# W.P. flanged cross. |
| 10,11 | 2" minimum 3000# W.P. adjustable choke bodies. |
| 14 | Cameron Mud Gauge or equivalent (location optional in Choke line). |
| 15 | 2" minimum 3000# W.P. flanged or threaded full opening steel gate valve, or Malliburton Lo Torc Plug valve. |

SCALE	DATE	EST. NO.	ORG. NO.
DRAWN BY			
CHECKED BY			
APPROVED BY			

EXHIBIT E