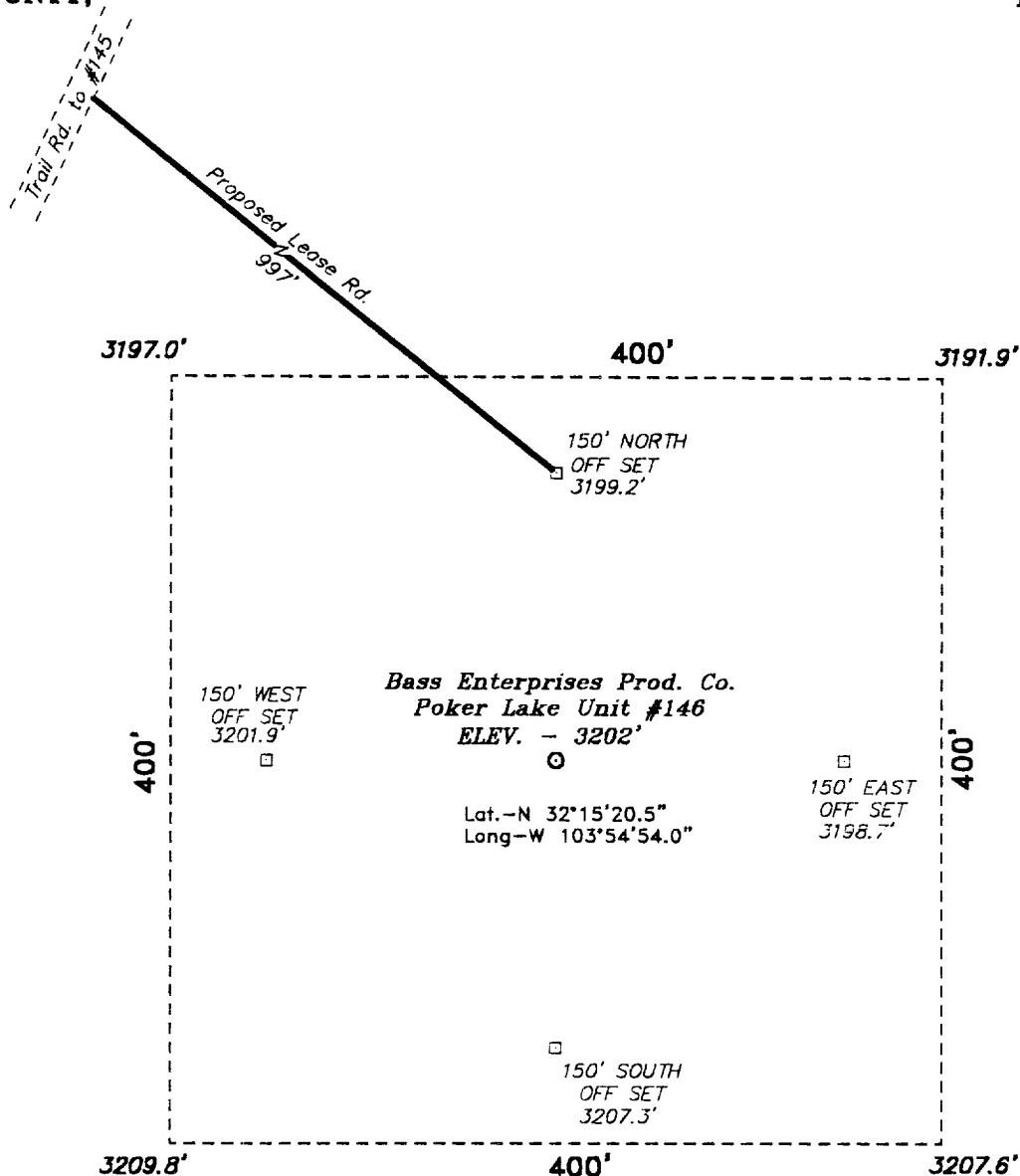


SECTION 31, TOWNSHIP 23 SOUTH, RANGE 30 EAST, N.M.P.M.,  
EDDY COUNTY, NEW MEXICO.



SCALE: 1" = 100'

Directions to Location:

FROM THE STATE HWY 128 AND CO. RD. 793 JUNCTION, GO SOUTH ON CO. RD. 793 APPROX. 4 MILES TO A CAL. LEASE ROAD; THENCE SOUTH APPROX. 2 MILES TO A POINT WHICH LIES APPROX. 1 MILE WEST OF PROPOSED WELL LOCATION.

**BASIN SURVEYS** P.O. BOX 1786 - HOBBS, NEW MEXICO

W.O. Number: 9464

Drawn By: **K. GOAD**

Date: 01-05-2000

Disk: KJG #122 - 9464A.DWG

**BASS ENTERPRISES PRODUCTION**

REF: Poker Lake Unit No. 146 / Well Pad Topo

THE POKER LAKE UNIT No. 146 LOCATED 660' FROM  
THE SOUTH LINE AND 810' FROM THE EAST LINE OF  
SECTION 31, TOWNSHIP 23 SOUTH, RANGE 30 EAST,  
N.M.P.M., EDDY COUNTY, NEW MEXICO.

Survey Date: 01-04-2000

Sheet 1 of 1 Sheets