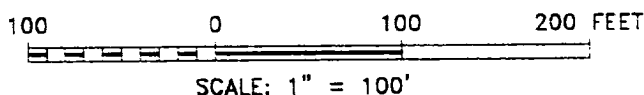
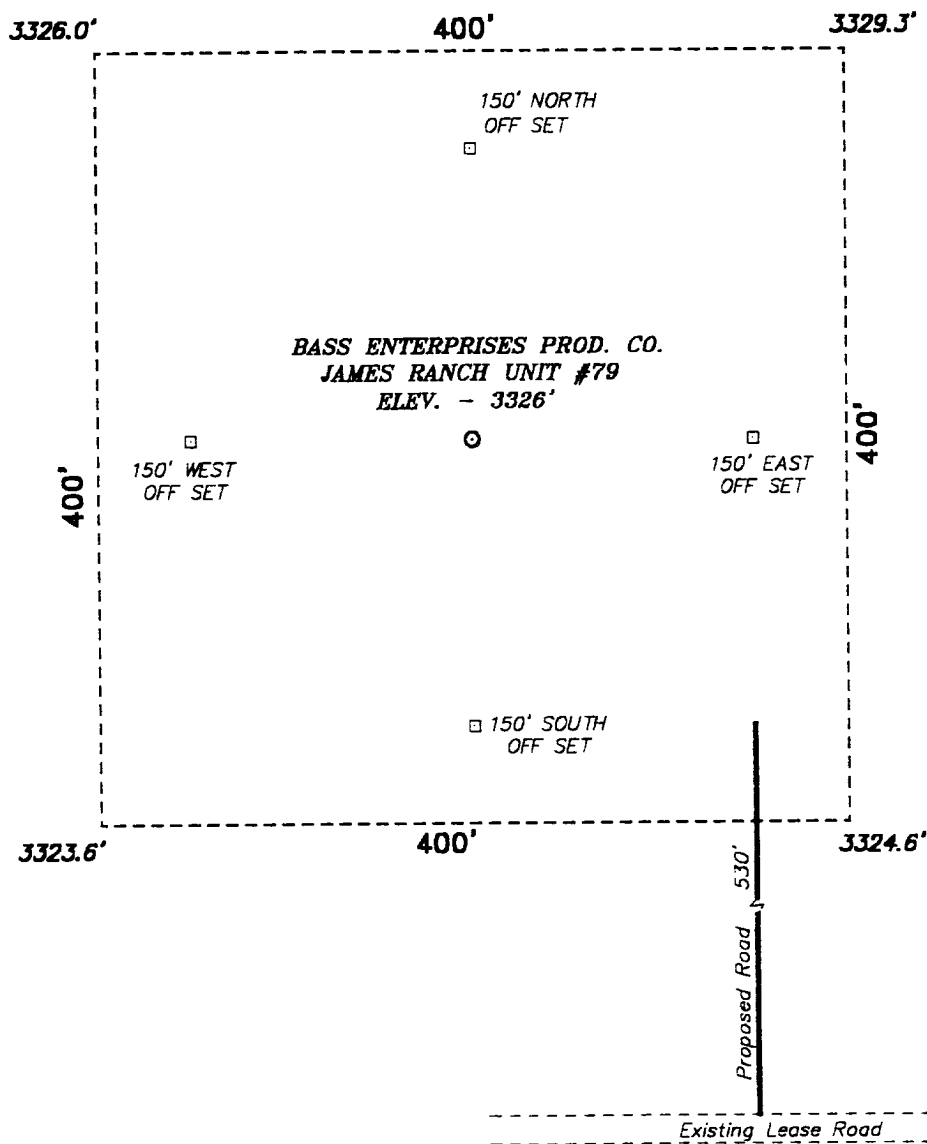


SECTION 6, TOWNSHIP 23 SOUTH, RANGE 31 EAST, N.M.P.M.,
EDDY COUNTY, NEW MEXICO.



DIRECTIONS TO LOCATION:

FROM THE JUNCTION OF STATE HWY 128 AND
COUNTY ROAD 802 (WIPP ROAD), GO NORTH ON CO.
RD 802 APPROX. 2 MILES TO A POINT WHICH LIES
APPROX. 0.5 MILE EAST OF LOCATION.

BASS ENTERPRISES PROD. CO.

REF: James Ranch Unit No. 79 / Well Pad Topo

THE JAMES RANCH UNIT No. 79 LOCATED 330' FROM THE
NORTH LINE AND 990' FROM THE EAST LINE OF
SECTION 6, TOWNSHIP 23 SOUTH, RANGE 31 EAST,
N.M.P.M., EDDY COUNTY, NEW MEXICO.

BASIN SURVEYS P.O. BOX 1786-HOBBS, NEW MEXICO

W.O. Number: 9393 Drawn By: **K. GOAD**

Date: 11-08-99 Disk: KJG #122 - 9393A.DWG

Survey Date: 11-05-99

Sheet 1 of 1 Sheets