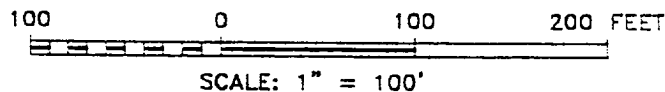
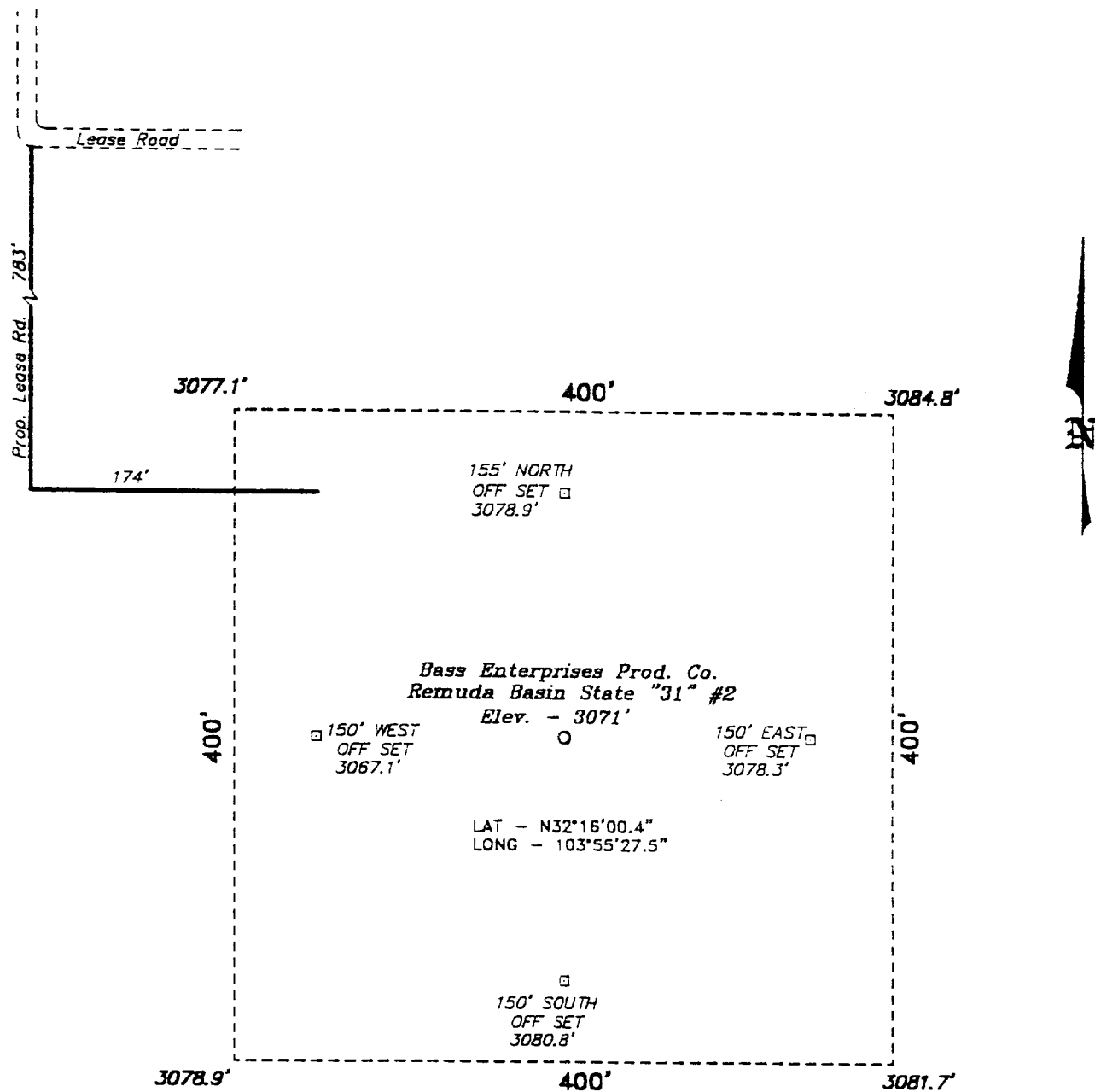


SECTION 31, TOWNSHIP 23 SOUTH, RANGE 30 EAST, N.M.P.M.,  
EDDY COUNTY, NEW MEXICO.



DIRECTIONS TO LOCATION:

FROM THE JUNCTION OF STATE HWY 128 & CO. RD. 793, GO WEST ON CO. RD. 793 APPROX. 3.5 MILES TO A LEASE ROAD; THENCE SOUTHEAST ON A LEASE ROAD APPROX. 0.5 MILE; THENCE SOUTH ON LEASE ROAD APPROX. 1.0 MILE THE PROPOSED LEASE ROAD WHICH LIES 960 FEET FROM THE PROPOSED WELL LOCATION.

**BASS ENTERPRISES PRODUCTION CO.**

REF: Remuda Basin State "31" No. 2 / Well Pad Topo  
THE REMUDA BASIN STATE "31" No. 2 LOCATED 660' FROM  
THE NORTH LINE AND 1650' FROM THE WEST LINE OF  
SECTION 31, TOWNSHIP 23 SOUTH, RANGE 30 EAST,  
N.M.P.M., EDDY COUNTY, NEW MEXICO.

**BASIN SURVEYS** P.O. BOX 1786 - HOBBS, NEW MEXICO

W.O. Number: 0435 Drawn By: **K. GOAD**

Date: 08-07-2000 Disk: KJG #122 - 0435A.DWG

Survey Date: 08-05-2000 Sheet 1 of 1 Sheets