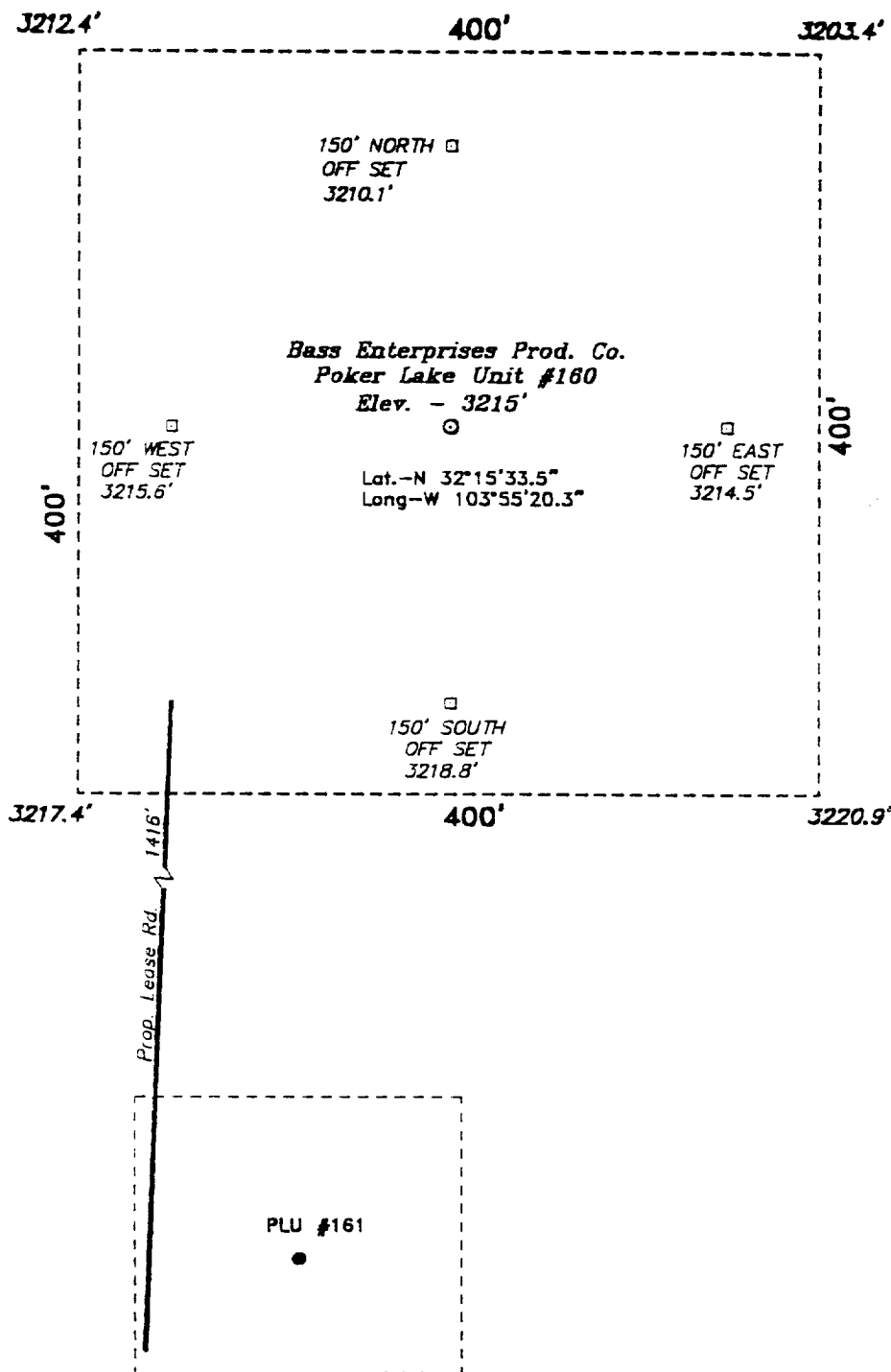
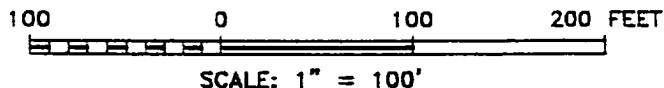


SECTION 31, TOWNSHIP 23 SOUTH, RANGE 30 EAST, N.M.P.M.,  
EDDY COUNTY, NEW MEXICO.



**DIRECTIONS TO LOCATION:**

FROM THE JUNCTION OF STATE HWY 31 AND STATE HWY 128, GO EAST ON HWY 128 FOR APPROX. 4.25 MILES TO CO. RD. 793; THENCE SOUTH ON 793 FOR APPROX. 3.25 MILES; THENCE CONTINUE SOUTH ON LEASE ROAD APPROX. 1800 FEET; THENCE EAST ON LEASE ROAD APPROX. 1700 FEET; THENCE SOUTH APPROX. 1.0 MILE; THENCE EAST APPROX. 1500 FEET; THENCE SOUTHERLY 1.5 MILE A POINT ON THE PROPOSED PLU #161 AND THE PROPOSED ROAD WHICH LIES 1320 FEET SOUTH OF THE PROPOSED WELL LOCATION.



**BASS ENTERPRISES PRODUCTION CO.**

REF: Poker Lake Unit No. 160 / Well Pad Topo

THE POKER LAKE UNIT No. 160 LOCATED 1980' FROM  
THE SOUTH LINE AND 2310' FROM THE WEST LINE OF  
SECTION 31, TOWNSHIP 23 SOUTH, RANGE 30 EAST,  
N.M.P.M., EDDY COUNTY, NEW MEXICO.

**Basin Surveys** P.O. BOX 1786 - HOBBS, NEW MEXICO

W.O. Number: 1026 Drawn By: K. GOAD

Date: 01-12-2001 Disk: KJG CD#3 - 1026A.DWG

Survey Date: 01-10-2001

Sheet 1 of 1 Sheets