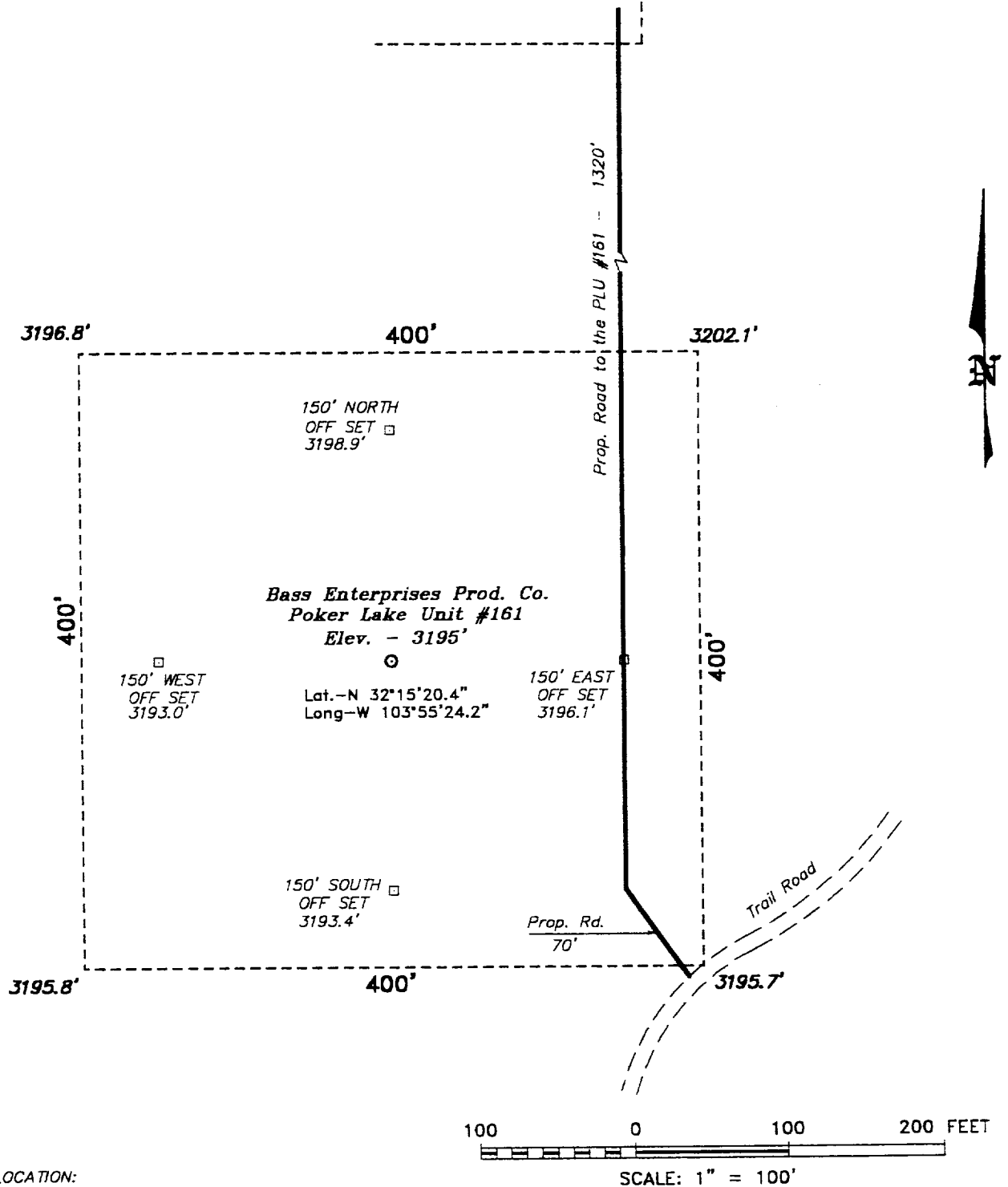


SECTION 31, TOWNSHIP 23 SOUTH, RANGE 30 EAST, N.M.P.M.,
EDDY COUNTY, NEW MEXICO.

PLU #160



DIRECTIONS TO LOCATION:

FROM THE JUNCTION OF STATE HWY 128 & CO. RD. 793, GO SOUTH AND WEST ON CO. RD. 793 APPROX. 4.0 MILES TO A LEASE ROAD; THENCE SOUTH ON LEASE ROAD APPROX. 2 MILES TO A POINT WHICH LIES APPROX 1 MILE FROM THE THE PROPOSED WELL LOCATION.

BASS ENTERPRISES PRODUCTION CO.

REF: Poker Lake Unit No. 161 / Well Pad Topo

THE POKER LAKE UNIT No. 161 LOCATED 660' FROM
THE SOUTH LINE AND 1980' FROM THE WEST LINE OF
SECTION 31, TOWNSHIP 23 SOUTH, RANGE 30 EAST,
N.M.P.M., EDDY COUNTY, NEW MEXICO.

BASIN SURVEYS P.O. BOX 1786-HOBBS, NEW MEXICO

W.O. Number: 0454 Drawn By: **K. GOAD**

Date: 08-17-2000 Disk: KJG #122 - 0454A.DWG

Survey Date: 08-9-2000 Sheet 1 of 1 Sheets