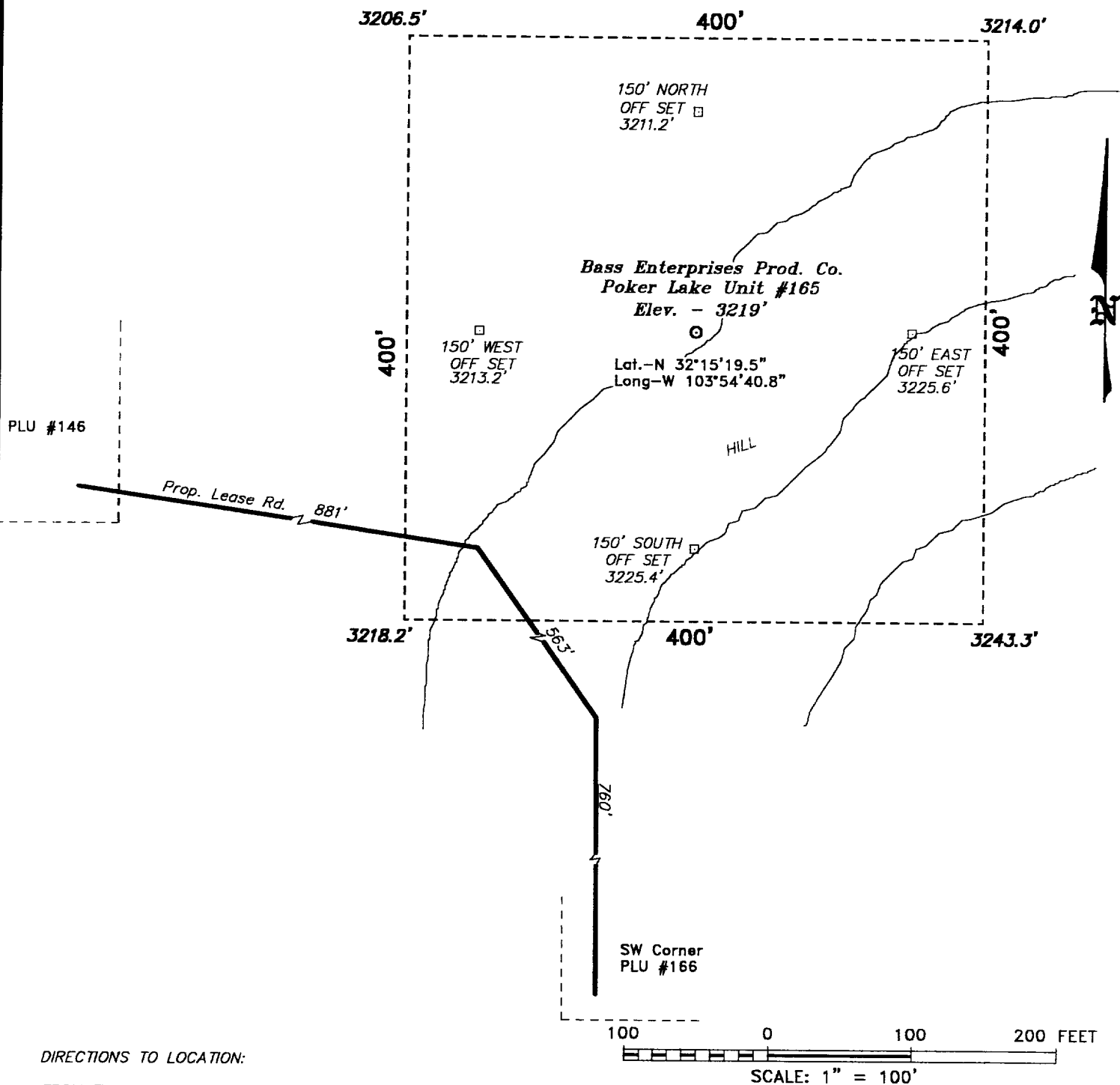


SECTION 32, TOWN<sup>SH</sup> IP 23 SOUTH, RANGE 0 EAST, N.M.P.M.,  
EDDY COUNTY, NEW MEXICO.



DIRECTIONS TO LOCATION:

FROM THE JUNCTION OF STATE HWY 128 & CO. RD.  
793, GO SOUTH AND WEST ON CO. RD. 793 APPROX.  
4.0 MILES TO A LEASE ROAD; THENCE SOUTH ON  
LEASE ROAD APPROX. 2.0 MILES TO A POINT WHICH  
LIES APPROX. 1.5 MILE WEST OF THE PROPOSED WELL  
LOCATION.

**BASS ENTERPRISES PRODUCTION CO.**

REF: Poker Lake Unit No. 165 / Well Pad Topo

THE POKER LAKE UNIT No. 165 LOCATED 560' FROM  
THE SOUTH LINE AND 330' FROM THE WEST LINE OF  
SECTION 32, TOWNSHIP 23 SOUTH, RANGE 30 EAST,  
N.M.P.M., EDDY COUNTY, NEW MEXICO.

**BASIN SURVEYS** P.O. BOX 1786 - HOBBS, NEW MEXICO

W.O. Number: 0458

Drawn By: K. GOAD

Date: 08-23-2000

Disk: KJG #122 - 0458A.DWG

Survey Date: 08-18-2000

Sheet 1 of 1 Sheets