

**District I**

1625 N. French Dr., Hobbs, NM 88240

**District II**

811 South First, Artesia, NM 88210

**District III**

1000 Rio Brazos Road, Aztec, NM 87410

**District IV**

2040 South Pacheco, Santa Fe, NM 87505

State of New Mexico  
Energy Minerals and Natural ResourcesOil Conservation Division  
2040 South Pacheco  
Santa Fe, NM 87505Form C-101  
Revised March 17, 1999Submit to appropriate District Office  
State Lease - 6 Copies  
Fee Lease - 5 Copies☐ AMENDED REPORT**APPLICATION FOR PERMIT TO DRILL, RE-ENTER, DEEPEN, PLUGBACK, OR ADD A ZONE**

<sup>1</sup> Operator Name and Address OXY USA Inc. P.O. Box 50250 Midland, TX 79710-0250		<sup>2</sup> OGRID Number 16696
<sup>3</sup> Property Code 26741	<sup>5</sup> Property Name OXY Seets State	<sup>4</sup> API Number 30-015- 31372
		<sup>6</sup> Well No. 1

<sup>7</sup> Surface Location									
UL or lot no.	Section	Township	Range	Lot Idn	Feet from the	North/South line	Feet from the	East/West line	County
F	35	23S	24E		1650	North	1650	West	Eddy

<sup>8</sup> Proposed Bottom Hole Location If Different From Surface									
UL or lot no.	Section	Township	Range	Lot Idn	Feet from the	North/South line	Feet from the	East/West line	County
<sup>9</sup> Proposed Pool 1 Undesignated Baldrige Canyon Morrow					<sup>10</sup> Proposed Pool 2				

<sup>11</sup> Work Type Code N	<sup>12</sup> Well Type Code G	<sup>13</sup> Cable/Rotary R	<sup>14</sup> Lease Type Code S - LG-1133	<sup>15</sup> Ground Level Elevation 3878'
<sup>16</sup> Multiple No	<sup>17</sup> Proposed Depth 10500'	<sup>18</sup> Formation Morrow	<sup>19</sup> Contractor UTI	<sup>20</sup> Spud Date 10/12/00

<sup>21</sup> Proposed Casing and Cement Program					
Hole Size	Casing Size	Casing weight/foot	Setting Depth	Sacks of Cement	Estimated TOC
17-1/2"	13-3/8"	48#	400'	360	Surface
12-1/4"	9-5/8" 8 5/8"	36#	2600'	700	Surface
8-3/4"	5-1/2"	17#	10500'	825	EST TOC 6000'

<sup>22</sup> Describe the proposed program. If this application is to DEEPEN or PLUG BACK, give the data on the present productive zone and proposed new productive zone. Describe the blowout prevention program, if any. Use additional sheets if necessary.

Minimum WOC time      hrs.

SEE OTHER SIDE

Notify OCD at SPUD & TIME  
to witness cementing the  
13 3/8" 8 5/8" casing.

<sup>23</sup> I hereby certify that the information given above is true and complete to the best of my knowledge and belief.

Signature: David Stewart

Printed name: David Stewart

Title: Regulatory Analyst

Date: 10/10/00

Phone: 915-685-5717

OIL CONSERVATION DIVISION

Approved by: ORIGINAL SIGNED BY TIM W. GUM  
DISTRICT II SUPERVISOR

Title: BGA

Approval Date: OCT 10 2000 Expiration Date: OCT 10 2001

Conditions of Approval:

Attached ☐

OXY Seets State #1  
1650 FNL 1650 FWL SENW(F) SEC 36 T23S R24E  
State Lease No.

PROPOSED TD: 10500' TVD

BOP PROGRAM: 0' - 400' None

400' - 2600' 13-3/8" 3M annular preventer.

2600' - 10500' 11" 5M blind pipe rams with 5M annular  
preventer and rotating head below 6900'.

CASING: Surface: 13-3/8" OD 48# H40 ST&C new casing set at 400'

Intermediate: 9-5/8" OD 36# K55 ST&C new casing from 0-2600'

Production: 5-1/2" OD 17# N80 LT&C new casing from 0-10500'

CEMENT: Surface - Circulate cement with 160sx 35:65 POZ/C with 6% Bentonite  
+ 2%  $\text{CaCl}_2$  + .25#/sx Cello-Flake followed by 200sx Cl C w/ 2%  $\text{CaCl}_2$ .

Intermediate - Circulate cement with 500sx 35:65 POZ/C with 6%  
Bentonite + 2%  $\text{CaCl}_2$  + .25 #/sx Cello-Flake followed by 200sx Cl C  
with 2%  $\text{CaCl}_2$ .

Production - Cement with 750sx 15:61:11 POZ/C/CSE with .5% FL-52  
+ .5% FL-25 + 8#/sx Gilsonite followed by 75sx Cl C with .7%  
FL-25.

Estimated top of cement is 6000'.

Note: Cement volumes may need to be adjusted to hole caliper.

MUD:

0 - 400' Fresh water/native mud. Lime for pH control  
(9-10). Paper for seepage.  
Wt 8.7-9.2 ppg, Vis 32-34 sec

400' - 2600' Fresh/\*Brine water. Lime for pH control  
(10.0-10.5). Paper for seepage.  
Wt 8.3-9.0/10.0-10.1ppg, Vis 28-29 sec  
\*Fresh water will be used unless chlorides in  
the mud system increases to 20000PPM.

2600' - 6900' Fresh water. Lime for pH control(9-9.5).  
Paper for seepage.  
Wt 8.4 ppg, Vis 28-29 sec

6900' - 9300' Cut brine. Lime for pH control (10-10.5).  
Wt 9.6 - 10.0 ppg, Vis 28-29sec

9300' - 10500' Mud up with an Duo Vis/Flo Trol mud system.  
Wt 10-10.2ppg, Vis 34-38sec, WL<8cc

1825 N. French Dr., Hobbs, NM 88240

811 South First, Artesia, NM 85210

1000 Rio Brazos Rd., Aztec, NM 87410

2040 South Pacheco, Santa Fe, NM 87505

State of New Mexico

**Energy, Minerals and Natural Resources Department**

Form C-102

Revised March 17, 1999

**Submit to Appropriate District Office**

**State Lease - 4 Copies**

Free Lease - 3 Copies

**OIL CONSERVATION DIVISION**

**2040 South Pacheco**

**Santa Fe, New Mexico 87504-2088**

☐ AMENDED REPORT

WELL LOCATION AND ACREAGE DEDICATION PLAT

API Number 30-015-		Pool Code 71420	Pool Name Undesignated Baldridge Canyon Morrow	
Property Code	Property Name OXY SEETS STATE			Well Number 1
OGRID No. 16696	Operator Name OXY USA INC.			Elevation 3878'

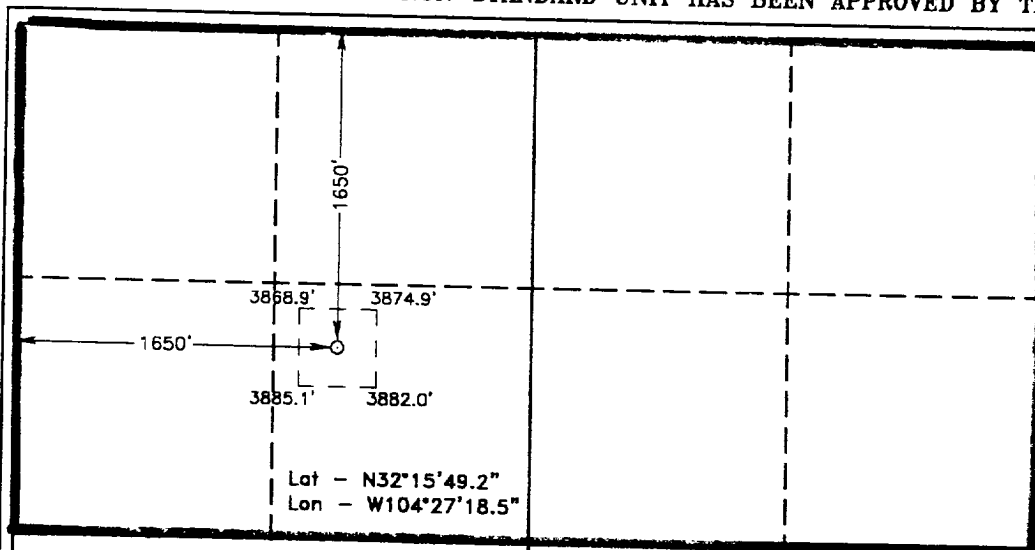
### Surface Location

Surface Location									
UL or lot No.	Section	Township	Range	Lot Idn	Feet from the	North/South line	Feet from the	East/West line	County
F	36	23 S	24 E		1650	NORTH	1650	WEST	EDDY

## Bottom Hole Location If Different From Surface

Bottom Hole Location is Different From Surface										
UL or lot No.	Section	Township	Range	Lot Idn	Feet from the	North/South line	Feet from the	East/West line	County	
Dedicated Acres 320	Joint or Infill N	Consolidation Code		Order No.						
NO ALLOWABLE WILL BE ASSIGNED										

NO ALLOWABLE WILL BE ASSIGNED TO THIS COMPLETION UNTIL ALL INTERESTS HAVE BEEN CONSOLIDATED  
OR A NON-STANDARD UNIT HAS BEEN APPROVED BY THE DIVISION



### OPERATOR CERTIFICATION

I hereby certify the the information  
contained herein is true and complete to the  
best of my knowledge and belief.

  
Signature

**Signature**

David Stewart

Printed Name \_\_\_\_\_

Regulatory Analyst

**Title**

Date 10/10/00

### SURVEYOR CERTIFICATION

I hereby certify that the well location shown on this plat was plotted from field notes of actual surveys made by me or under my supervision and that the same is true and correct to the best of my belief.

October 7, 2000

Date Surveyed: L. JONES  
Signature: Seal of  
Bureau: 11-MEM

Signature & Seal of  
Professional Surveyor

1979

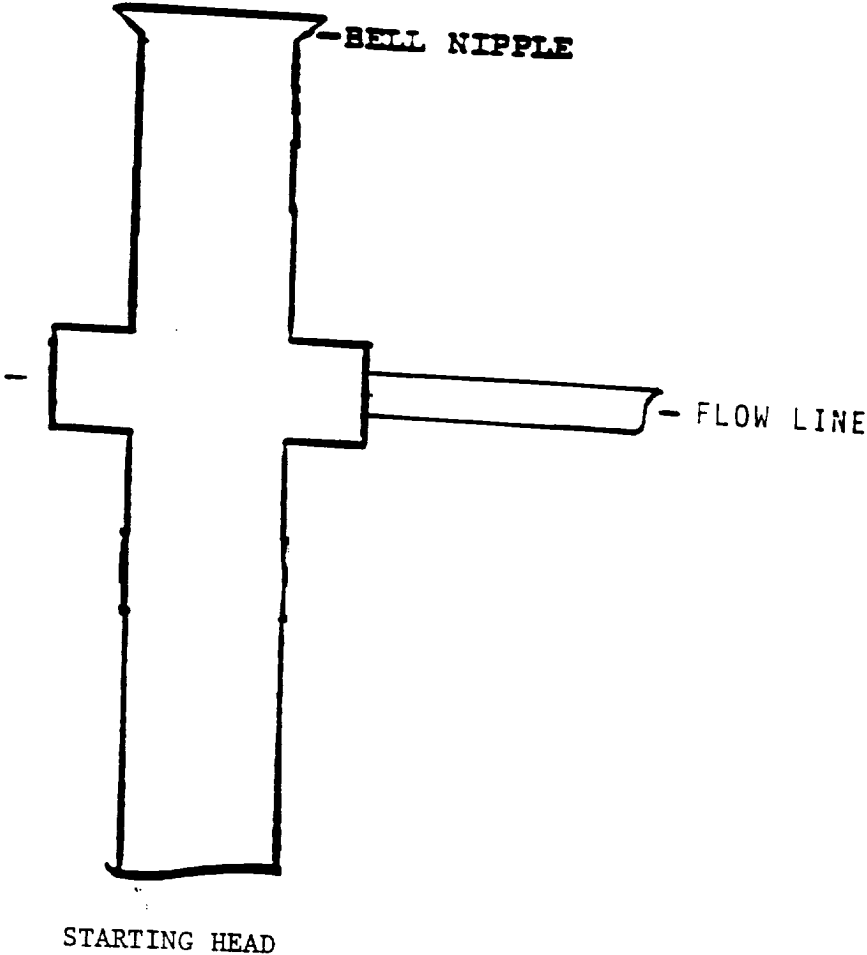
W.O. No. C

Professional  
BASIN SURV

\_\_\_\_\_

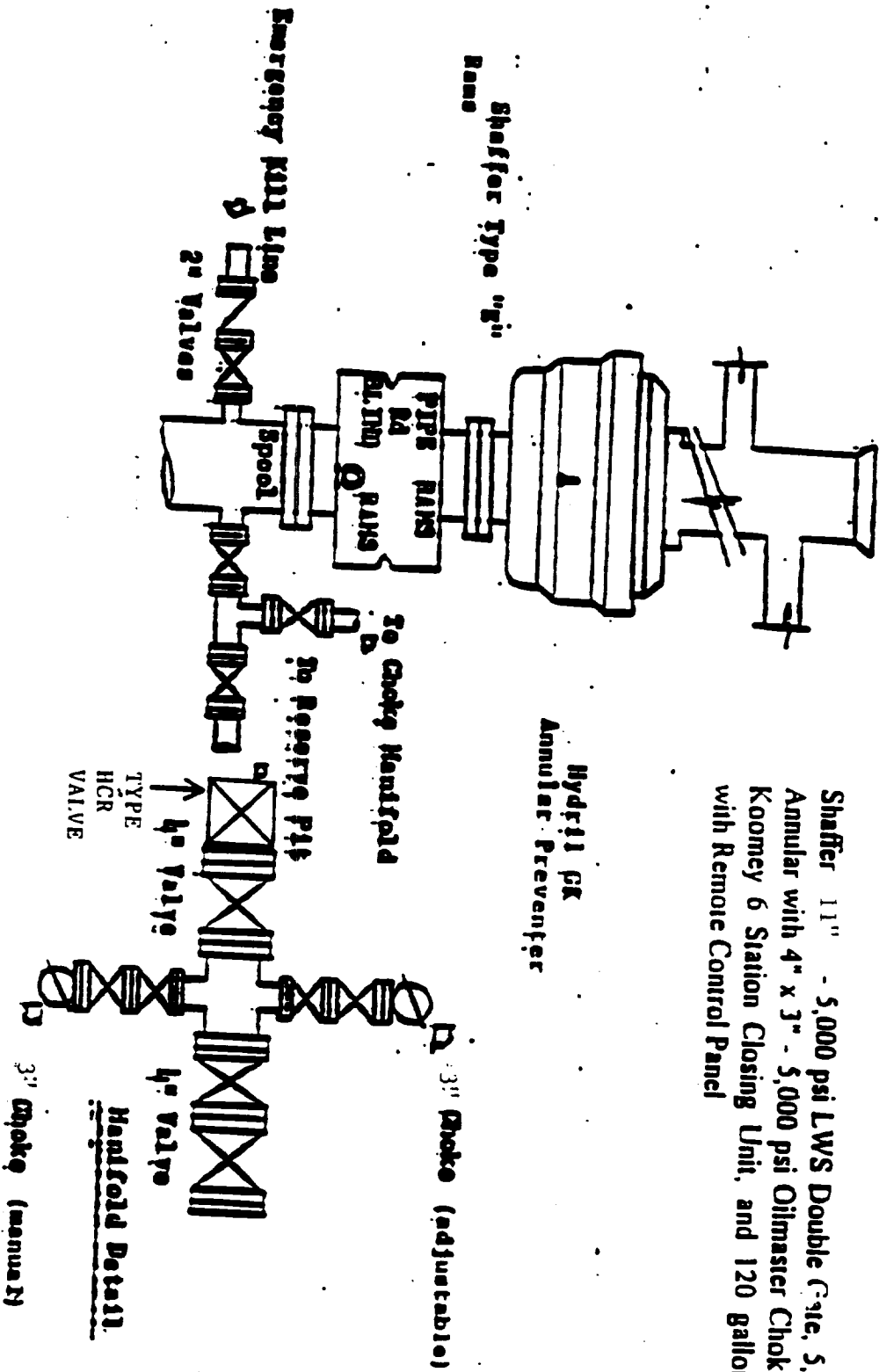
EXHIBIT A

ANNULAR PREVENTOR  
TO BE USED AS DIVERTOR ONLY



# BLOWOUT PREVENTOR SCHEMATIC

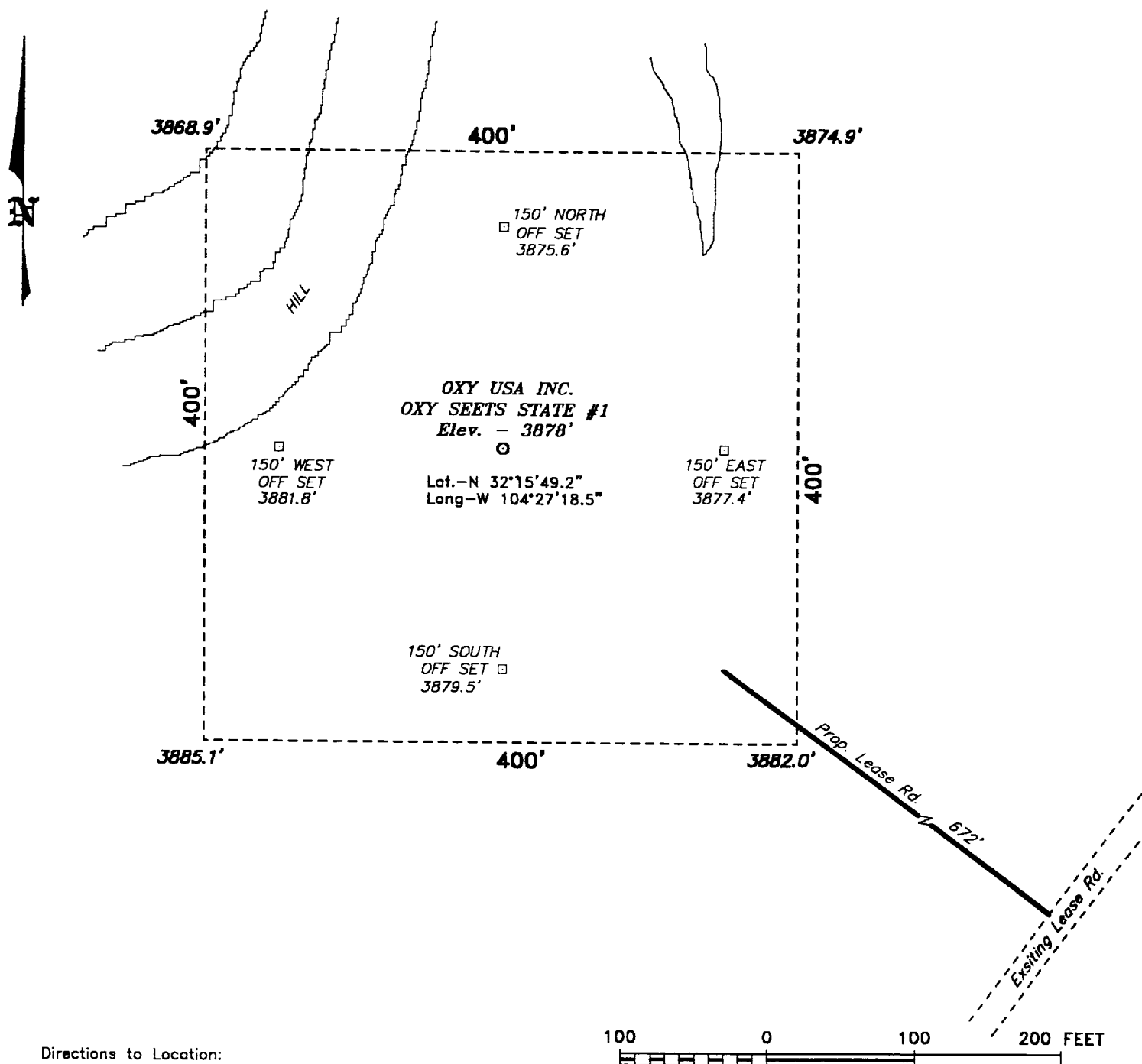
EXHIBIT A



Shaffer 11" - 5,000 psi LWS Double Gate, 5,000 psi Shaffer Annular with 4" x 3" - 5,000 psi Oilmaster Choke Manifold and Koomey 6 Station Closing Unit, and 120 gallon Accumulator with Remote Control Panel

Choke Manifold

**SECTION 36, TOWNSHIP 23 SOUTH, RANGE 24 EAST, N.M.P.M.,  
EDDY COUNTY, NEW MEXICO.**



**Directions to Location:**

FROM THE JUNCTION OF CO. RD. 672 & CO. RD. 408(DARK CANYON RD.) 9.4 MILES SOUTHWEST OF CARLSBAD ON 672, GO WESTERLY ON 408 8.3 MILES TO ALSE ROAD LEFT; THENCE S.20°11'31"W., 684 FEET; THENCE S.47°15'52"W., 1298 FEET; THENCE S.36°46'00"W., 499 FEET TO PROPOSED LEASE ROAD.

**Oxy USA Inc.**

REF: Oxy Seets State No. 1 / Well Pad Topo

THE OXY SEETS STATE No. 1 LOCATED 1650' FROM THE NORTH LINE AND 1650' FROM THE WEST LINE OF SECTION 36, TOWNSHIP 23 SOUTH, RANGE 24 EAST, N.M.P.M., EDDY COUNTY, NEW MEXICO.

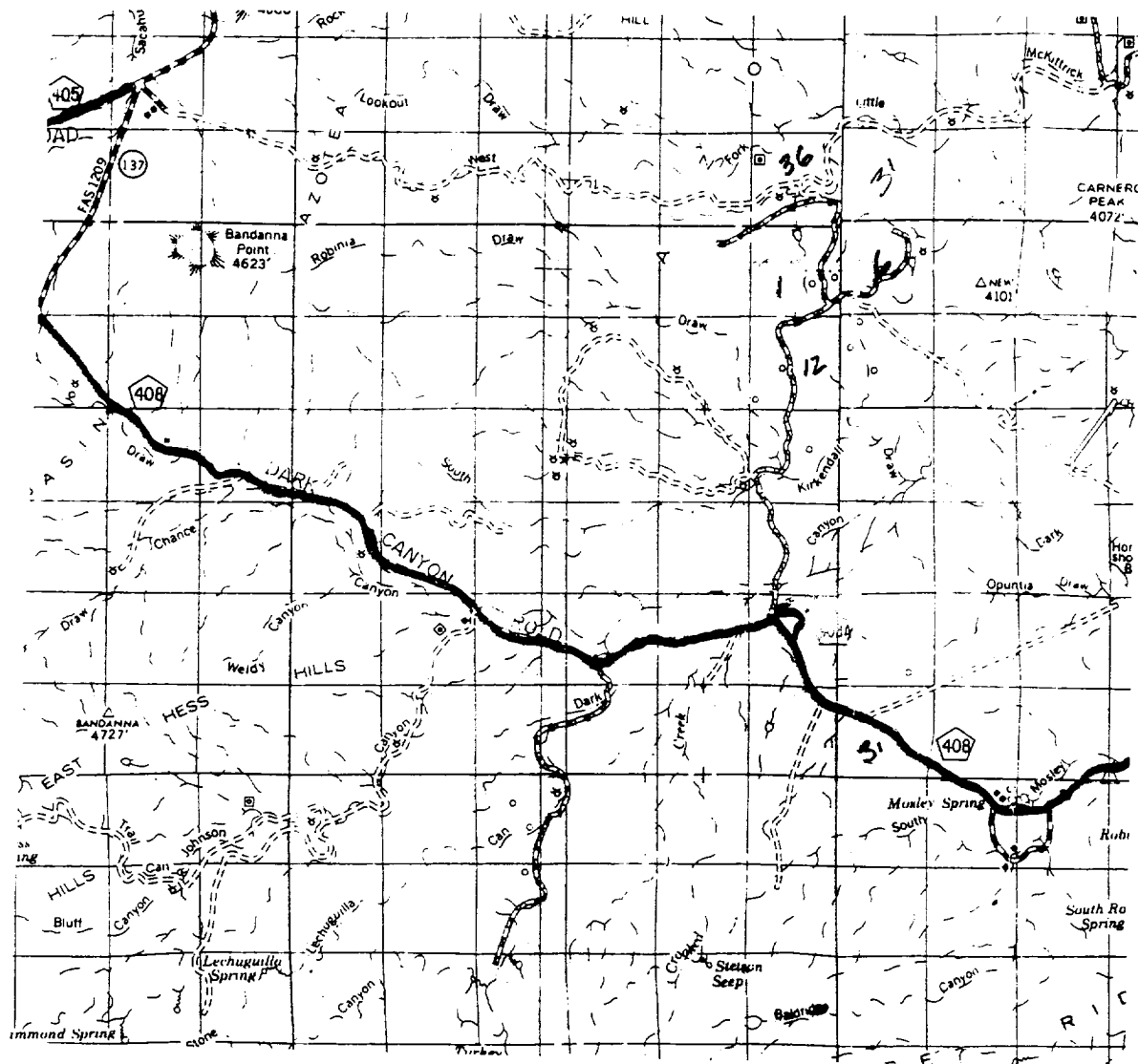
**BASIN SURVEYS** P.O. BOX 1786 - HOBBS, NEW MEXICO

W.O. Number: 0564 Drawn By: K. GOAD

Date: 10-09-2000 Disk: KJG #122 - 0564A.DWG

Survey Date: 10-07-2000 Sheet 1 of 1 Sheets





OXY SEETS STATE #1  
 Located at 1650' FNL and 1650' FWL  
 Section 36, Township 23 South, Range 24 East,  
 N.M.P.M., Eddy County, New Mexico.

**basin**  
**surveys**  
 focused on excellence  
 in the oilfield

P.O. Box 1786  
 1120 N. West County Rd.  
 Hobbs, New Mexico 88241  
 (505) 393-7316 - Office  
 (505) 392-3074 - Fax  
 basinsurveys.com

W.O. Number: 0564AA - KJG #122

Survey Date: 10-07-2000

Scale: 1" = 2 MILES

Date: 10-09-2000

OXY USA INC.