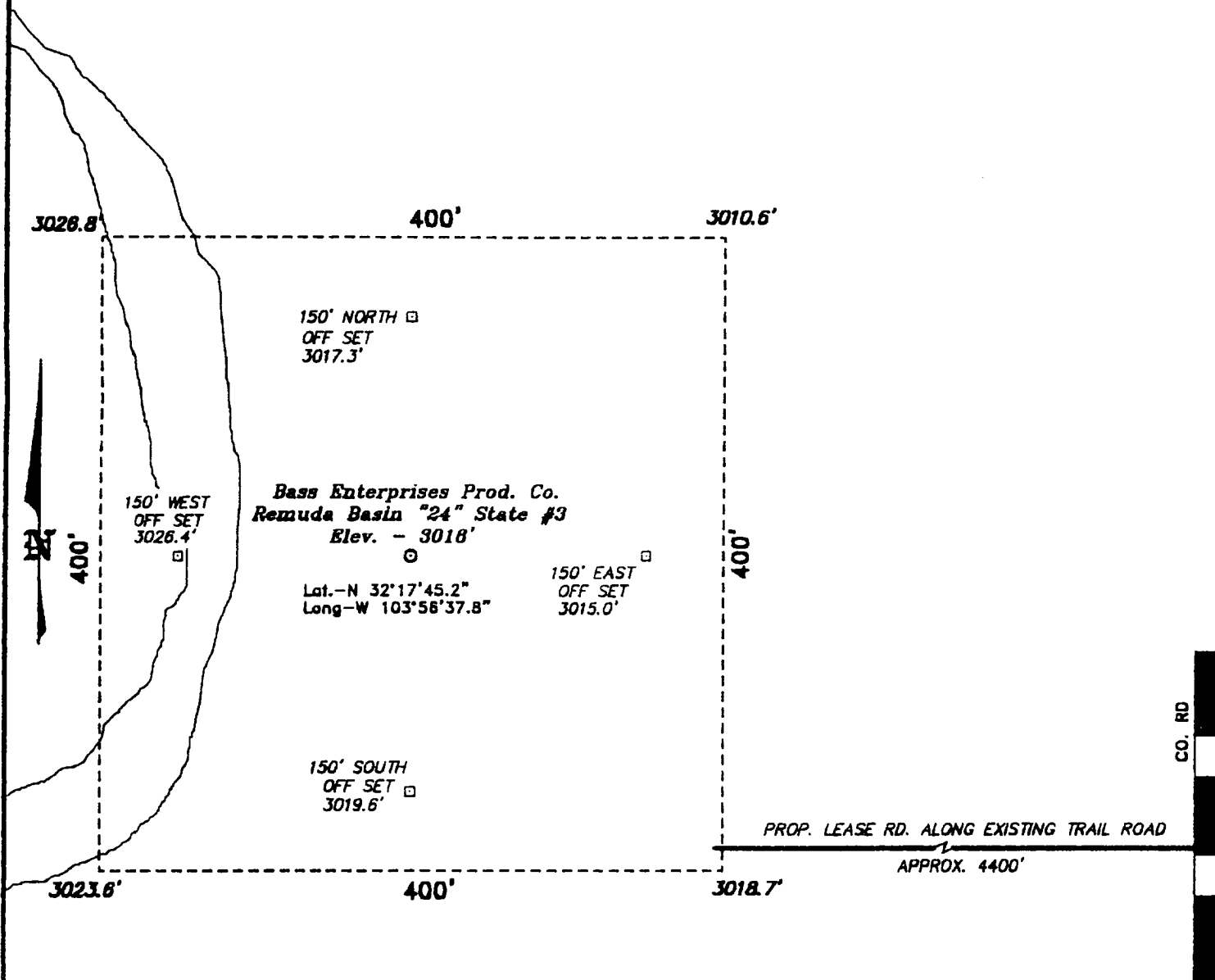
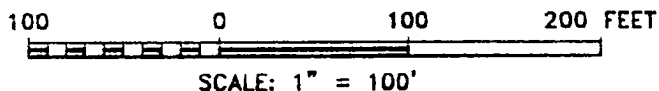


**SECTION 24, TOWNSHIP 23 SOUTH, RANGE 29 EAST, N.M.P.M.,  
EDDY COUNTY, NEW MEXICO.**



**DIRECTIONS TO LOCATION:**

FROM THE JUNCTION OF STATE HWY 128 & CO. RD. 793, GO SOUTH ON CO. RD. 793 APPROX. 3.0 MILES TO A POINT WHICH LIES APPROX. 1.0 MILE EAST OF THE PROPOSED WELL LOCATION.



**BASIN SURVEYS** P.O. BOX 1786—HOBBS, NEW MEXICO

W.O. Number: 0542 Drawn By: **K. GOAD**

Date: 09-29-2000 Disk: KJG #122 - 0542A.DWG

**BASS ENTERPRISES PRODUCTION CO.**

REF: Remuda Basin "24" State No. 3 / Well Pad Topo

THE REMUDA BASIN "24" STATE No. 3 LOCATED 660' FROM THE NORTH LINE AND 990' FROM THE WEST LINE OF SECTION 24, TOWNSHIP 23 SOUTH, RANGE 29 EAST,

N.M.P.M., EDDY COUNTY, NEW MEXICO.

Survey Date: 09-25-2000 Sheet 1 of 1 Sheets