

District I
PO Box 1980, Hobbs, NM 88241-1980

District II
811 South First, Artesia, NM 88210

District III
1000 Rio Brazos Rd., Aztec, NM 87410

District IV
2040 South Pacheco, Santa Fe, NM 87505

State of New Mexico
Energy, Minerals & Natural Resources Department

OIL CONSERVATION DIVISION
2040 South Pacheco
Santa Fe, NM 87505

Form C-161
Revised October 18, 1994
Instructions on back
Submit to Appropriate District Office
State Lease - 6 Copies
Fee Lease - 5 Copies

☐ AMENDED REPORT

APPLICATION FOR PERMIT TO DRILL, RE-ENTER, DEEPEN, PLUGBACK, OR ADD A ZONE

Operator Name and Address Mewbourne Oil Company PO Box 5270 Hobbs, NM 88241		OGRID Number 14744
Property Code 27076		Property Name Baldridge 6 State Com
API Number 30 - 015-31524		Well No. 1

Surface Location

UL or lot no.	Section	Township	Range	Lot Idn	Feet from the	North/South line	Feet from the	East/West Line	County
P	6	24S	25E		660	South	660	East	Eddy

Proposed Bottom Hole Location If Different From Surface

UL or lot no.	Section	Township	Range	Lot Idn	Feet from the	North/South line	Feet from the	East/West Line	County
Proposed Pool 1 Baldridge Canyon Morrow					Proposed Pool 2 Mosley Canyon-Strawn				

Work Type Code N	Well Type Code G	Cable/Rotary R	Lease Type Code P	Ground Level Elevation 3926
Multiple No	Proposed Depth 11400	Formation Morrow	Contractor TBA	Spud Date 01-10-01

Proposed Casing and Cement Program

Hole Size	Casing Size	Casing weight/foot	Setting Depth	Sacks of Cement	Estimated TOC
17 1/2"	13 3/8"	48#	400	400	Circ to Surface
12 1/4"	8 5/8"	32#	2700	1000	Circ to Surface
7 7/8"	5 1/2"	17#	11400	600	Tie into 8 5/8"

Describe the proposed program. If this application is to DEEPEN or PLUG BACK give the data on the present productive zone and proposed new productive zone. Describe the blowout prevention program, if any. Use additional sheets if necessary.

BOP Program: Minimum of 600 Series Hydril from 400' to 2700'.
900 Series Double-Ram Hydraulic w/ Hydril from 2700' to TD. Rotating Head, PVT's, Flow Monitors & Separator
will installed before Woldcamp.

Mud Program: 0'-400' Fresh water spud mud
400'-2700' Fresh water mud
2700'-9300' Cut Brine
9300'-11400' Cut Brine using Starch for viscosity & water loss

Notify OCD spud & time to witness
cementing of 8 5/8" CASING

I hereby certify that the information given above is true and complete to the best of my knowledge and belief.

Signature:

N.M. Young

Printed name:

N.M. Young

Title:

District Manager

B6A OIL CONSERVATION DIVISION

Approved By:

ORIGINAL SIGNED BY TIM W. GUM
DISTRICT II SUPERVISOR

Title:

Approval Date:

DEC 26 2001

Expiration Date:

DEC 26 2001

DISTRICT I
1625 N. French Dr., Hobbs, NM 88240

DISTRICT II
811 South First, Artesia, NM 88210

DISTRICT III
1000 Rio Brazos Rd., Artec, NM 87410

DISTRICT IV
2040 South Pacheco, Santa Fe, NM 87506

State of New Mexico
Energy, Minerals and Natural Resources Department

Form C-102
Revised March 17, 1989
Instruction on back
Submit to Appropriate District Office
State Lease - 4 Copies
Fee Lease - 3 Copies

OIL CONSERVATION DIVISION
P.O. Box 2088
Santa Fe, New Mexico 87504-2088

☐ AMENDED REPORT

WELL LOCATION AND ACREAGE DEDICATION PLAT

API Number	Pool Code	Pool Name
Property Code	Property Name BALDRIDGE CANYON "6" STATE COM.	Well Number 1
GRID No.	Operator Name MEWBOURNE OIL COMPANY	Elevation 3926

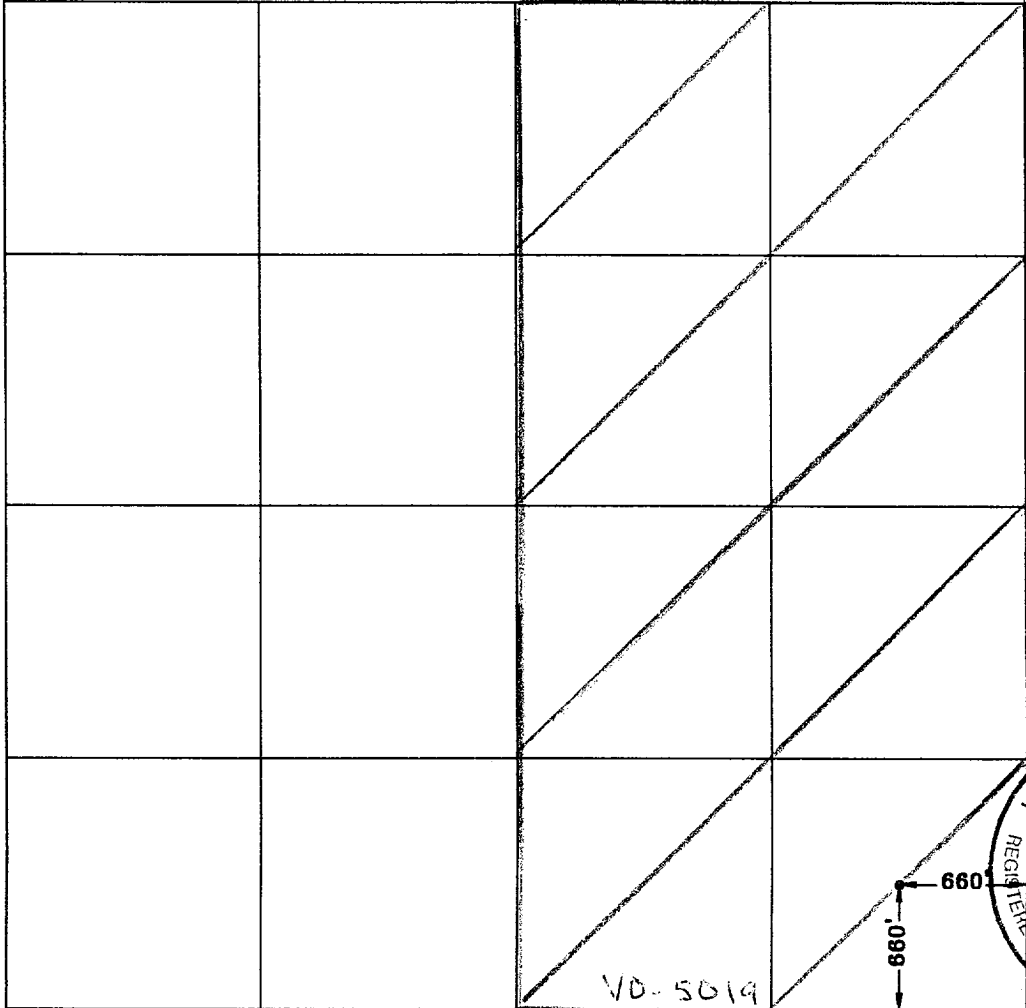

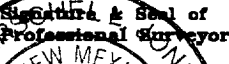
Surface Location

UL or lot No.	Section	Township	Range	Lot Idn	Feet from the	North/South line	Feet from the	East/West line	County
P	6	24S	25E		660	SOUTH	660	EAST	EDDY

Bottom Hole Location If Different From Surface

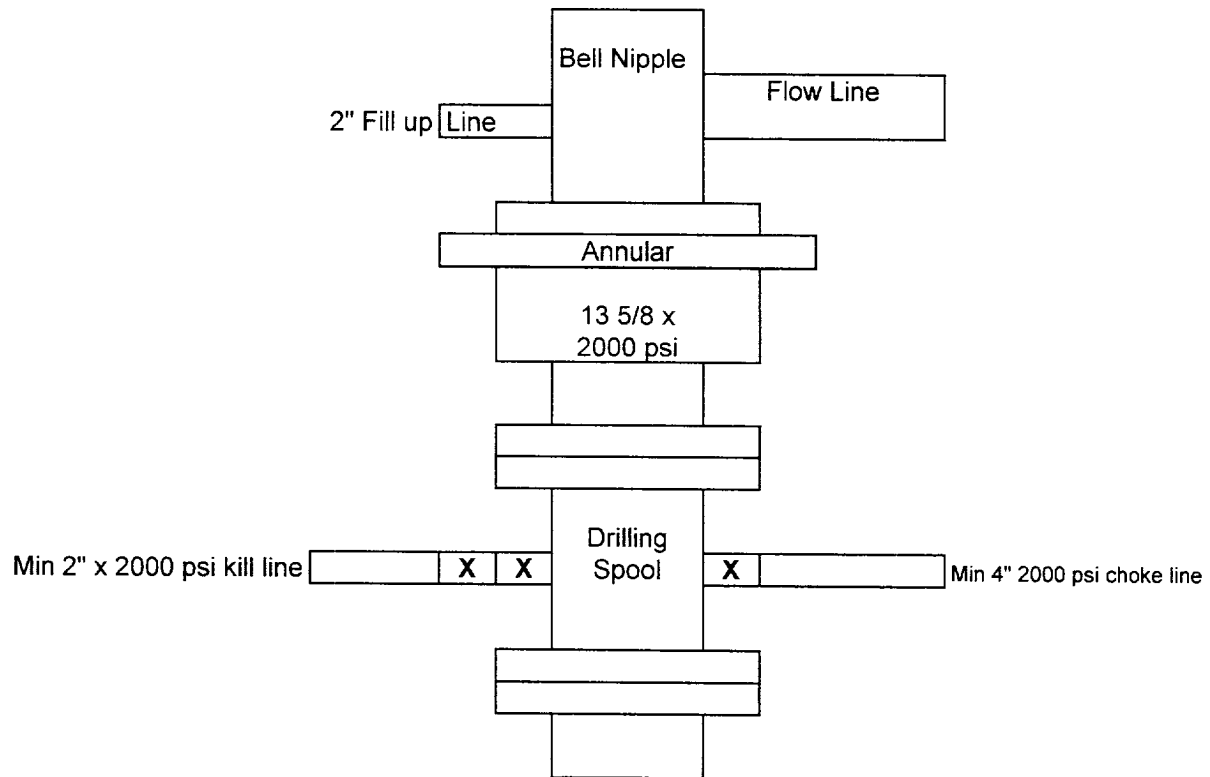
UL or lot No.	Section	Township	Range	Lot Idn	Feet from the	North/South line	Feet from the	East/West line	County
Dedicated Acres 319.7	Joint or Infill	Consolidation Code	Order No.						

NO ALLOWABLE WILL BE ASSIGNED TO THIS COMPLETION UNTIL ALL INTERESTS HAVE BEEN CONSOLIDATED
OR A NON-STANDARD UNIT HAS BEEN APPROVED BY THE DIVISION

	OPERATOR CERTIFICATION I hereby certify the the information contained herein is true and complete to the best of my knowledge and belief.  Signature J. M. Young Printed Name District Manager Title 12-21-00 Date	
	SURVEYOR CERTIFICATION I hereby certify that the well location shown on this plat was plotted from field notes of actual surveys made by me or under my supervision, and that the same is true and correct to the best of my belief. 8/30/2000 Date Surveyed  Signature & Seal of Professional Surveyor Certificate No. Harschel L. Jones RLS 3640 BALDRIDGE DISK 33 GENERAL SURVEYING COMPANY	

Mewbourne Oil Company

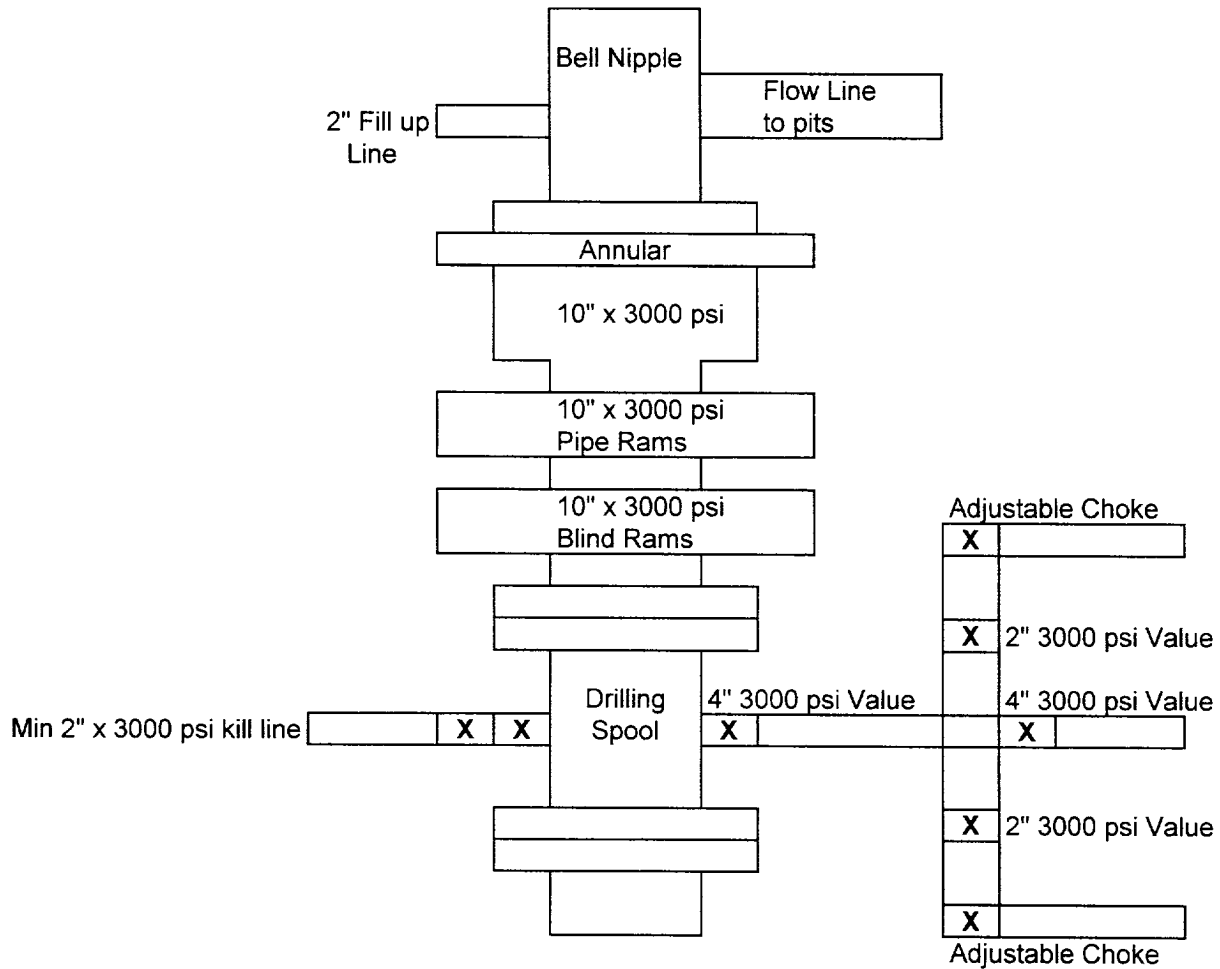
BOP Schematic for
12 1/4 Hole



Baldrige 6 State Com #1
660'FSL & 660'FEL
Sec.6 T-24S R-25E
Eddy, County New Mexico

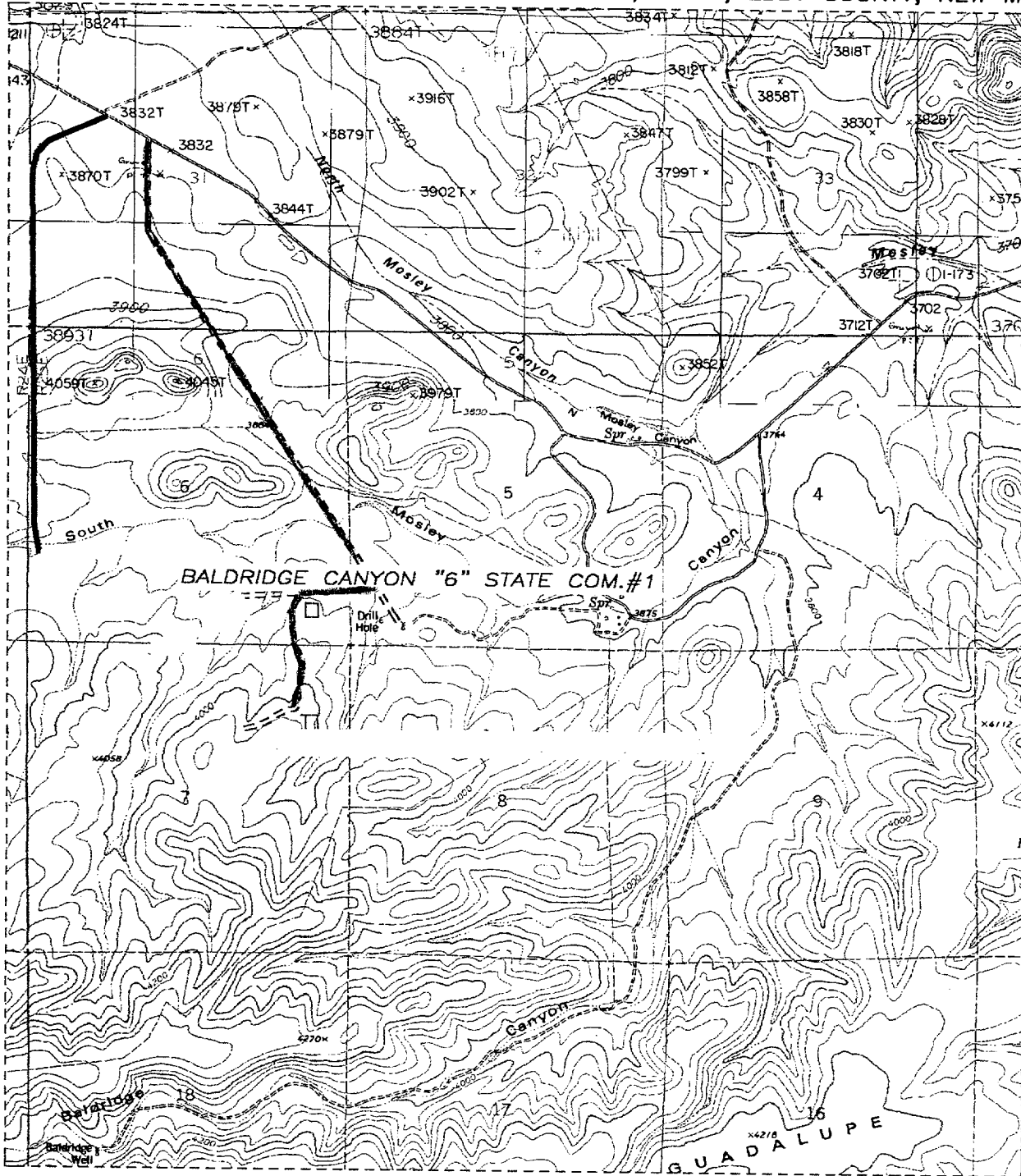
Mewbourne Oil Company

BOP Scematic for
8 3/4" or 7 7/8" Hole



Baldrige 6 State Com #1
660'FSL & 660'FEL
Sec.6 T-24S R-25E
Eddy, County New Mexico

SECTION 6 & 7, TOWNSHIP 24 SOUTH, RANGE 25 EAST, NMPM, EDDY COUNTY, NEW MEXICO.



52

THE PREPARATION OF THIS PLAN AND THE PERFORMANCE OF THE SURVEY UPON WHICH IT IS BASED WERE DONE UNDER MY DIRECTION AND THE PLAN ACCURATELY DEPICTS THE RESULTS OF SAID SURVEY AND MEETS THE REQUIREMENTS OF THE STANDARDS FOR LAND SURVEYS IN NEW MEXICO AS ADOPTED BY THE NEW MEXICO STATE BOARD OF REGISTRATION FOR PROFESSIONAL ENGINEERS AND LAND SURVEYORS.

HERSCHEL L. JONES R.L.S. No. 3640

GENERAL SURVEYING COMPANY P.O. BOX 1928
LOVINGTON, NEW MEXICO 88260

MEWBOURNE OIL COMPANY

BALDRIDGE CANYON "6" STATE COM. #1 LOCATED
IN SECTION 6, TOWNSHIP 24 SOUTH, RANGE 25
EAST, NMPM, EDDY COUNTY, NEW MEXICO.

Survey Date: 8/30/2000

Drawn By: Ed Blevins

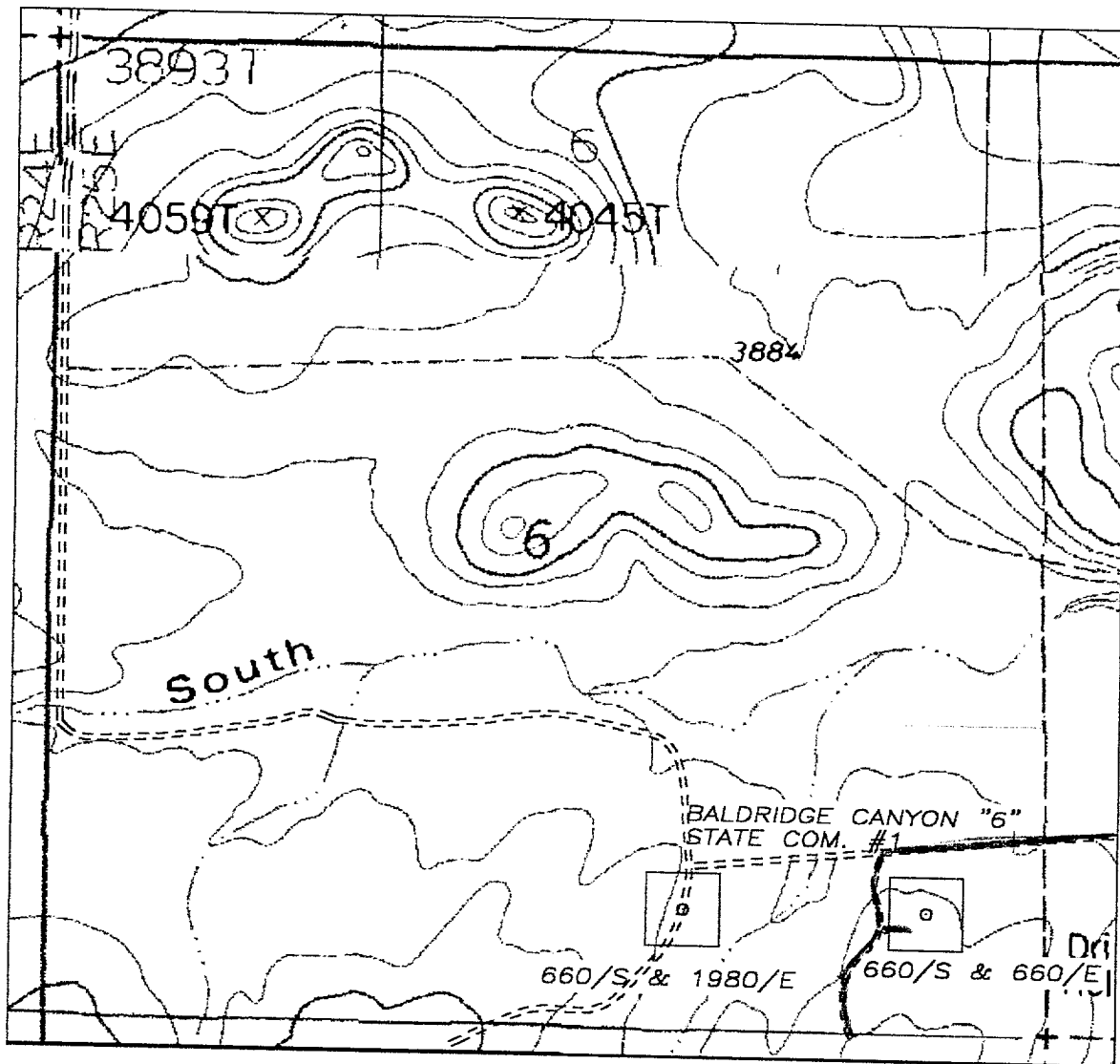
Date: 8/30/00

Sheet of Sheets

W.O. Number

Scale 1" = 1000' BALDRIDGE6

SECTION 6, TOWNSHIP 24 SOUTH, RANGE 25 EAST, NMPM, EDDY COUNTY, NEW MEXICO.



THE PREPARATION OF THIS PLAN AND THE PERFORMANCE OF THE SURVEY UPON WHICH IT IS BASED WERE DONE UNDER MY DIRECTION AND THE PLAN ACCURATELY DEPICTS THE RESULTS OF SAID SURVEY AND MEET THE REQUIREMENTS OF THE STANDARDS FOR LAND SURVEYS IN NEW MEXICO AS ADOPTED BY THE NEW MEXICO STATE BOARD OF REGISTRATION FOR PROFESSIONAL ENGINEERS AND LAND SURVEYORS.

HERSCHELL JONES
HERSCHELL JONES R.L.S. No. 3640

GENERAL SURVEYING COMPANY P.O. BOX 1928
LOVINGTON, NEW MEXICO 88260

1000' 0 1000' 2000'
Scale 1" = 1000'

MEWBOURNE OIL COMPANY

BALDRIDGE CANYON "6" STATE COM. #1 LOCATED
IN SECTION 6, TOWNSHIP 24 SOUTH, RANGE 25
EAST, NMPM, EDDY COUNTY, NEW MEXICO.

Survey Date: 8/30/2000	Sheet 2 of 2 Sheets
Drawn By: Ed Blevins	W.O. Number
Date: 8/30/00	Scale 1" = 1000' BALDRIDGE 6