

District I
1625 N. French Dr., Hobbs, NM 88240
District II
811 South First, Artesia, NM 88210
District III
1000 Rio Brazos Road, Aztec, NM 87410
District IV
2040 South Pacheco, Santa Fe, NM 87505

State of New Mexico
Energy Minerals and Natural Resources

Oil Conservation Division
2040 South Pacheco
Santa Fe, NM 87505

Form C-101
Revised March 17, 1999

Submit to appropriate District Office
State Lease - 6 Copies
Fee Lease - 5 Copies

☐ AMENDED REPORT

APPLICATION FOR PERMIT TO DRILL, RE-ENTER, DEEPEN, PLUGBACK, OR ADD A ZONE

| | | |
|---|--|---|
| ¹ Operator Name and Address OXY USA WTP Limited Partnership P.O. Box 50250 Midland, TX 79710-0250 | | ² OGRID Number 192463 |
| ³ Property Code 27323 | | ⁴ Property Name OXY Boo State |
| | | ⁵ API Number 30 - 015 - 31589 |
| | | ⁶ Well No 1 |

⁷ Surface Location

| UL or lot no. | Section | Township | Range | Lot ldn | Feet from the | North/South line | Feet from the | East/West line | County |
|---------------|---------|----------|-------|---------|---------------|------------------|---------------|----------------|--------|
| G | 9 | 23S | 26E | | 1980 | North | 1980 | East | Eddy |

⁸ Proposed Bottom Hole Location If Different From Surface

| UL or lot no. | Section | Township | Range | Lot ldn | Feet from the | North/South line | Feet from the | East/West line | County |
|---|---------|----------|-------|---------|--|------------------|---------------|----------------|--------|
| | | | | | | | | | |
| ⁹ Proposed Pool 1 Undesignated Carlsbad Morrow, South | | | | | ¹⁰ Proposed Pool 2 73960 | | | | |

| | | | | |
|-----------------------------------|--|-----------------------------------|--|---|
| ¹¹ Work Type Code N | ¹² Well Type Code G | ¹³ Cable/Rotary R | ¹⁴ Lease Type Code S - V5445 | ¹⁵ Ground Level Elevation 3333' |
| ¹⁶ Multiple No | ¹⁷ Proposed Depth 12000' | ¹⁸ Formation Morrow | ¹⁹ Contractor UTI | ²⁰ Spud Date 2/20/01 |

²¹ Proposed Casing and Cement Program

| Hole Size | Casing Size | Casing weight/foot | Setting Depth | Sacks of Cement | Estimated TOC |
|-----------|-------------|--------------------|---------------|-----------------|---------------|
| 17-1/2" | 13-3/8" | 48# | 700' | 650 | Surface |
| 12-1/4" | 9-5/8" | 36# | 2800' | 800 | Surface |
| 8-3/4" | 7" | 26# | 9500' | 850 | Est-4500' |
| 6-1/2" | 4-1/2" | 11.6# | 9000-12000' | 350 | Est-9000' |
| | | | | | |

22 Describe the proposed program. If this application is to DEEPEN or PLUG BACK, give the data on the present productive zone and proposed new productive zone. Describe the blowout prevention program, if any. Use additional sheets if necessary.

38293031-123

OXY Boo State #1
1980 FNL 1980 FEL Sec 9 T23S R26E Eddy County, NM
State Lease No. V5445

PROPOSED TD: 12000' TVD

BOP PROGRAM: 0-700' None
700-2800' 13-5/8" 3M annular preventer.
2800-9500' 11" 5M blind pipe rams with 5M annular preventer and
rotating head below 8300'.
9500-12000' 7-1/16" 10M blind pipe rams with 10M annular preventer
and rotating head below 12500'.

CASING: Surface: 13-3/8" OD 48# H40 ST&C new casing set at 700'
17-1/2" hole
Intermediate: 9-5/8" OD 36# K55 ST&C new casing from 0-2800'
12-1/4" hole
Protection: 7" OD 26# N80 ST&C new casing from 0-9500'
8-3/4" hole
Liner: 4-1/2" OD 11.6# S95 LT&C new casing from 9000-12000'
6-1/2" hole

CEMENT: Surface - Circulate cement with 450sx 35:65 POZ/C with 6% Bentonite + 2% CaCl₂
+ .25#/sx Cello-Flake followed by 200sx Cl C with 2% CaCl₂.
Intermediate - Circulate cement with 600sx 35:65 POZ/C with 6% Bentonite +
2% CaCl₂ + .25#/sx Cello-Flake followed by 200sx Cl C with 2% CaCl₂.
Protection - Cement with 650sx 15:61:11 POZ/C/CSE with .5% FL-52
+ .5% FL-25 + 8#/sx Gilsonite followed by 200sx Cl C with 2% CaCl₂.
Estimated top of cement is 4500'.
Liner - Circulate cement with 350sx Cl H w/ 1% FL-62 + .4% CD-32 1#/sx
BA-61.

Note: Cement volumes may need to be adjusted to hole caliper.

MUD: 0-700' Fresh water/native mud. Lime for pH control
(9-10). Paper for seepage.
Wt 8.7-9.2 ppg, Vis 32-34 sec
700-2800' Fresh/*Brine water. Lime for pH control (10.0-10.5).

DISTRICT I
1825 N. French Dr., Hobbs, NM 88240

DISTRICT II
811 South First, Artesia, NM 88210

DISTRICT III
1000 Rio Brazos Rd., Artec, NM 87410

DISTRICT IV
2040 South Pacheco, Santa Fe, NM 87506

State of New Mexico
Energy, Minerals and Natural Resources Department

Form C-102
Revised March 17, 1999

Submit to Appropriate District Office

State Lease - 4 Copies

Fee Lease - 3 Copies

OIL CONSERVATION DIVISION

2040 South Pacheco
Santa Fe, New Mexico 87504-2088

☐ AMENDED REPORT

WELL LOCATION AND ACREAGE DEDICATION PLAT

| | | |
|-----------------------|--|--|
| API Number 30-015- | Pool Code 73960 | Pool Name Undesignated Carlsbad Morrow, South |
| Property Code | Property Name OXY Boo State | Well Number 1 |
| OGRID No. 192463 | Operator Name OXY USA WTP Limited Partnership | Elevation 3333' |

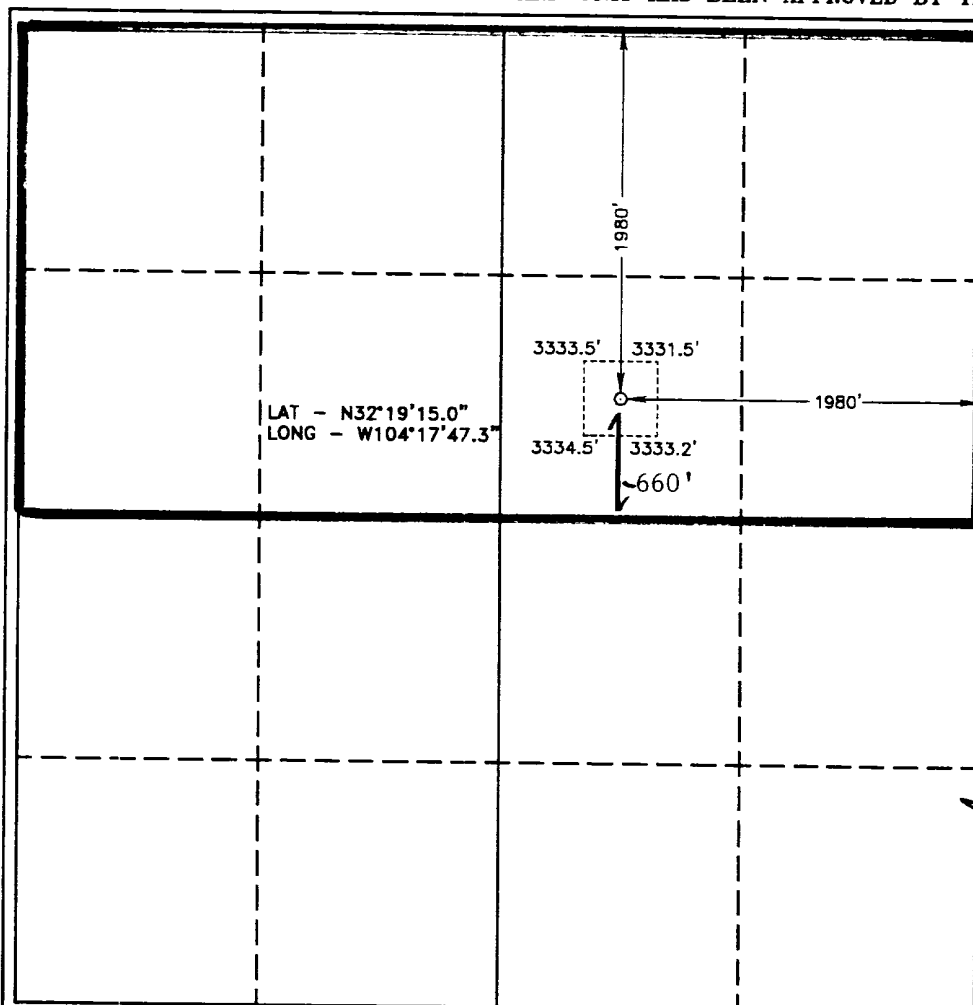
Surface Location

| | | | | | | | | | |
|--------------------|--------------|------------------|---------------|---------|-----------------------|---------------------------|-----------------------|------------------------|----------------|
| UL or lot No. G | Section 9 | Township 23 S | Range 26 E | Lot Idn | Feet from the 1980 | North/South line NORTH | Feet from the 1980 | East/West line EAST | County EDDY |
|--------------------|--------------|------------------|---------------|---------|-----------------------|---------------------------|-----------------------|------------------------|----------------|

Bottom Hole Location If Different From Surface

| | | | | | | | | | |
|------------------------|----------------------|--------------------|-----------|---------|---------------|------------------|---------------|----------------|--------|
| UL or lot No. | Section | Township | Range | Lot Idn | Feet from the | North/South line | Feet from the | East/West line | County |
| Dedicated Acres 320 | Joint or Infill N | Consolidation Code | Order No. | | | | | | |

NO ALLOWABLE WILL BE ASSIGNED TO THIS COMPLETION UNTIL ALL INTERESTS HAVE BEEN CONSOLIDATED
OR A NON-STANDARD UNIT HAS BEEN APPROVED BY THE DIVISION



OPERATOR CERTIFICATION

I hereby certify the the information
contained herein is true and complete to the
best of my knowledge and belief.

David Stewart
Signature

David Stewart
Printed Name

Regulatory Analyst
Title

Date

1/30/01

SURVEYOR CERTIFICATION

I hereby certify that the well location shown
on this plat was plotted from field notes of
actual surveys made by me or under my
supervision, and that the same is true and
correct to the best of my belief.

May 1, 2000

Date Surveyed
Signature & Seal of
Professional Surveyor

GARY L. JONES
7977

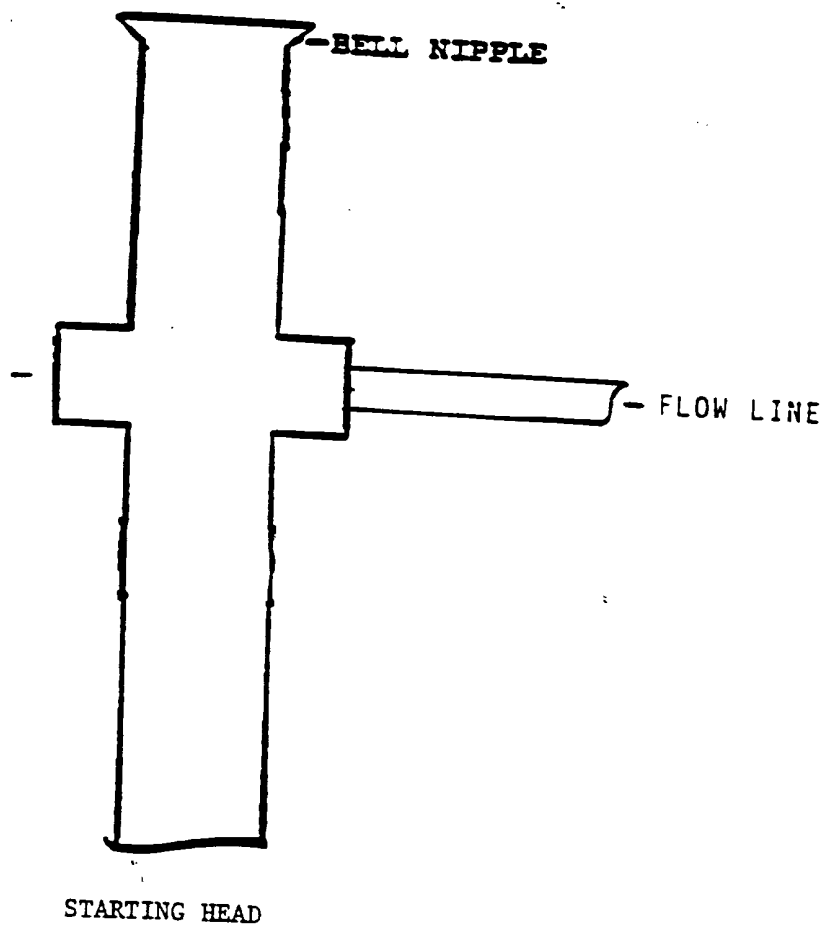
W.O. No. 02444

Certificate No. Gary L. Jones 7977
PROFESSIONAL SURVEYOR

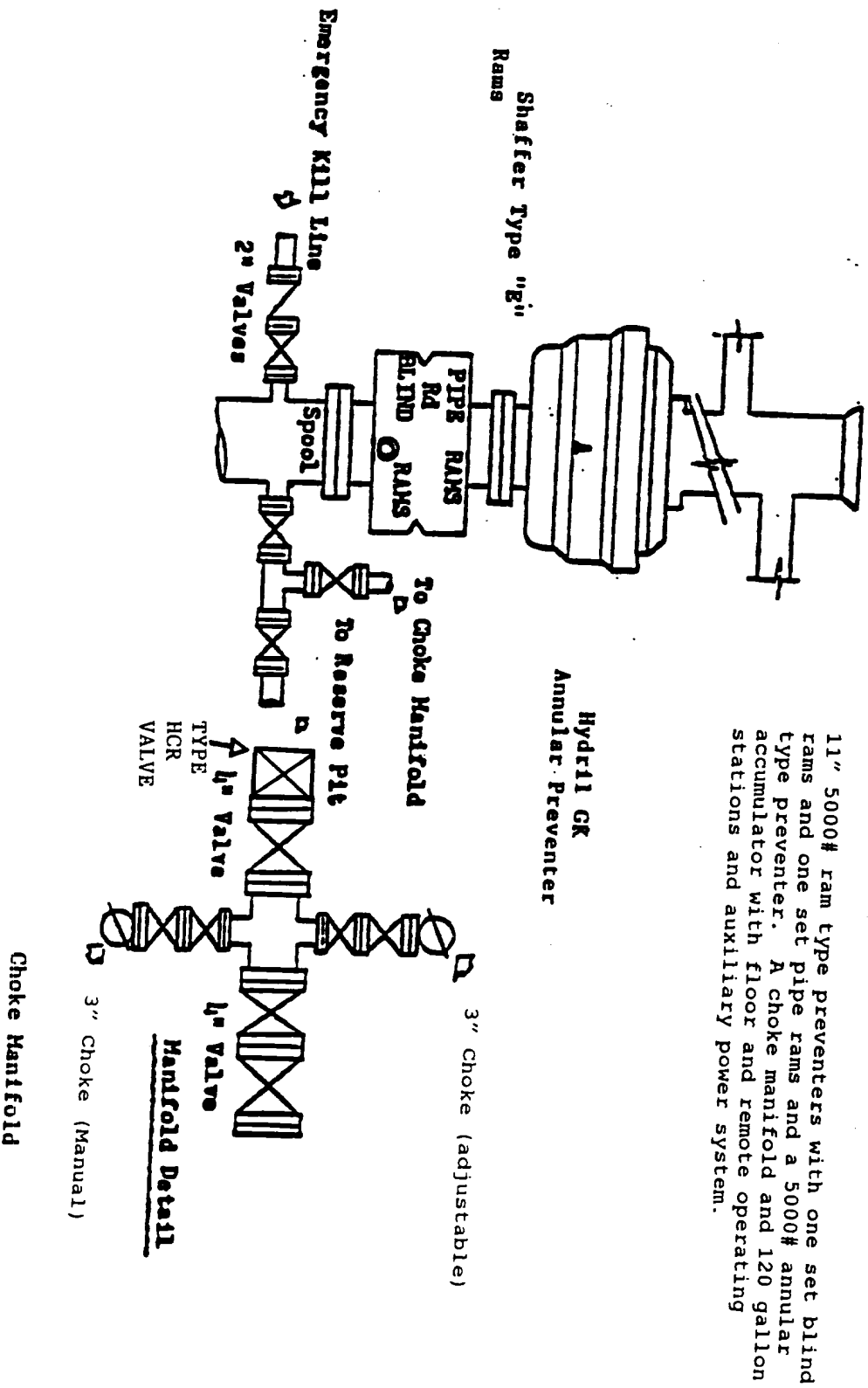
BASIN SURVEYS

EXHIBIT A

ANNULAR PREVENTOR
TO BE USED AS DIVERTOR ONLY

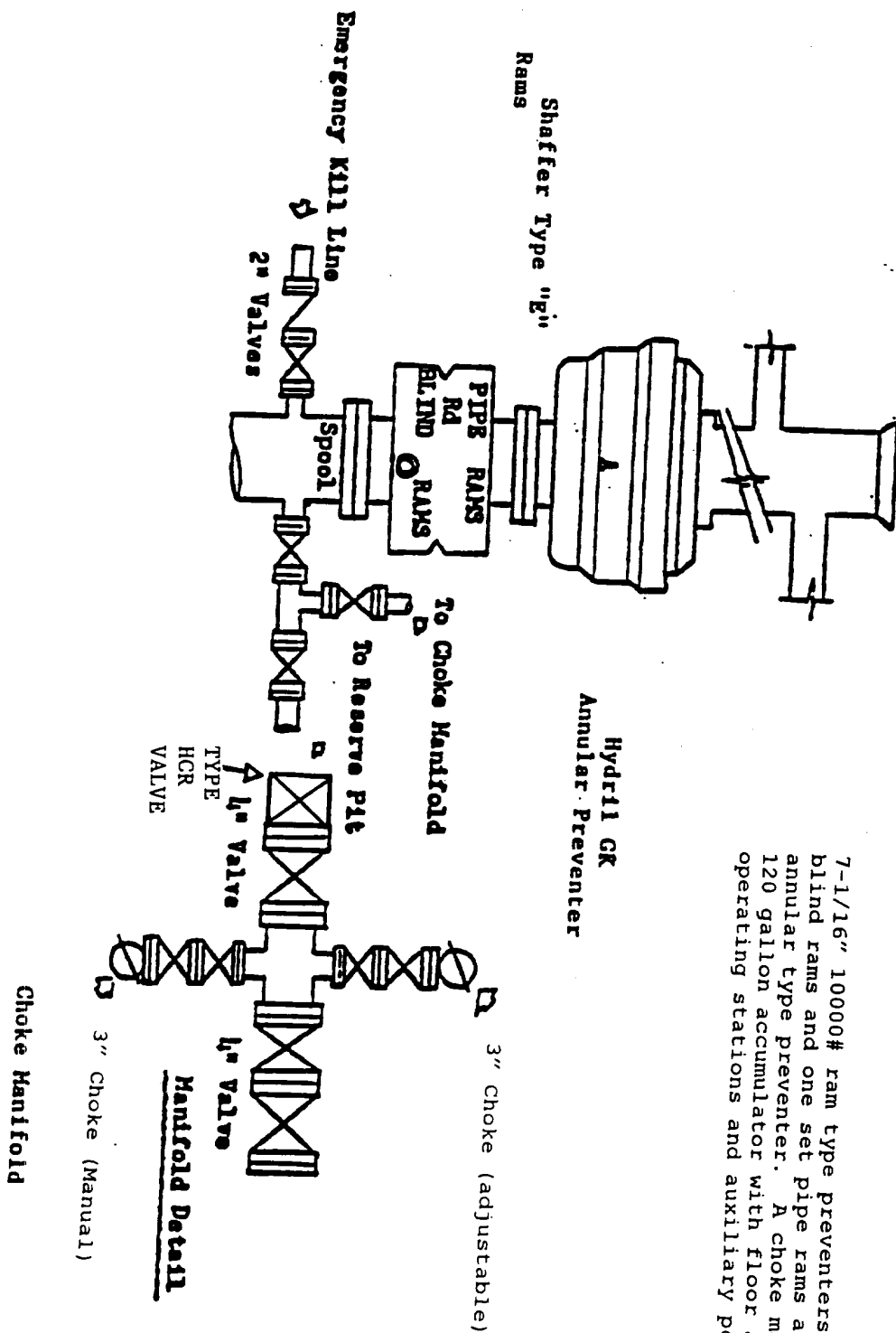


BLOWOUT PREVENTOR SCHEME



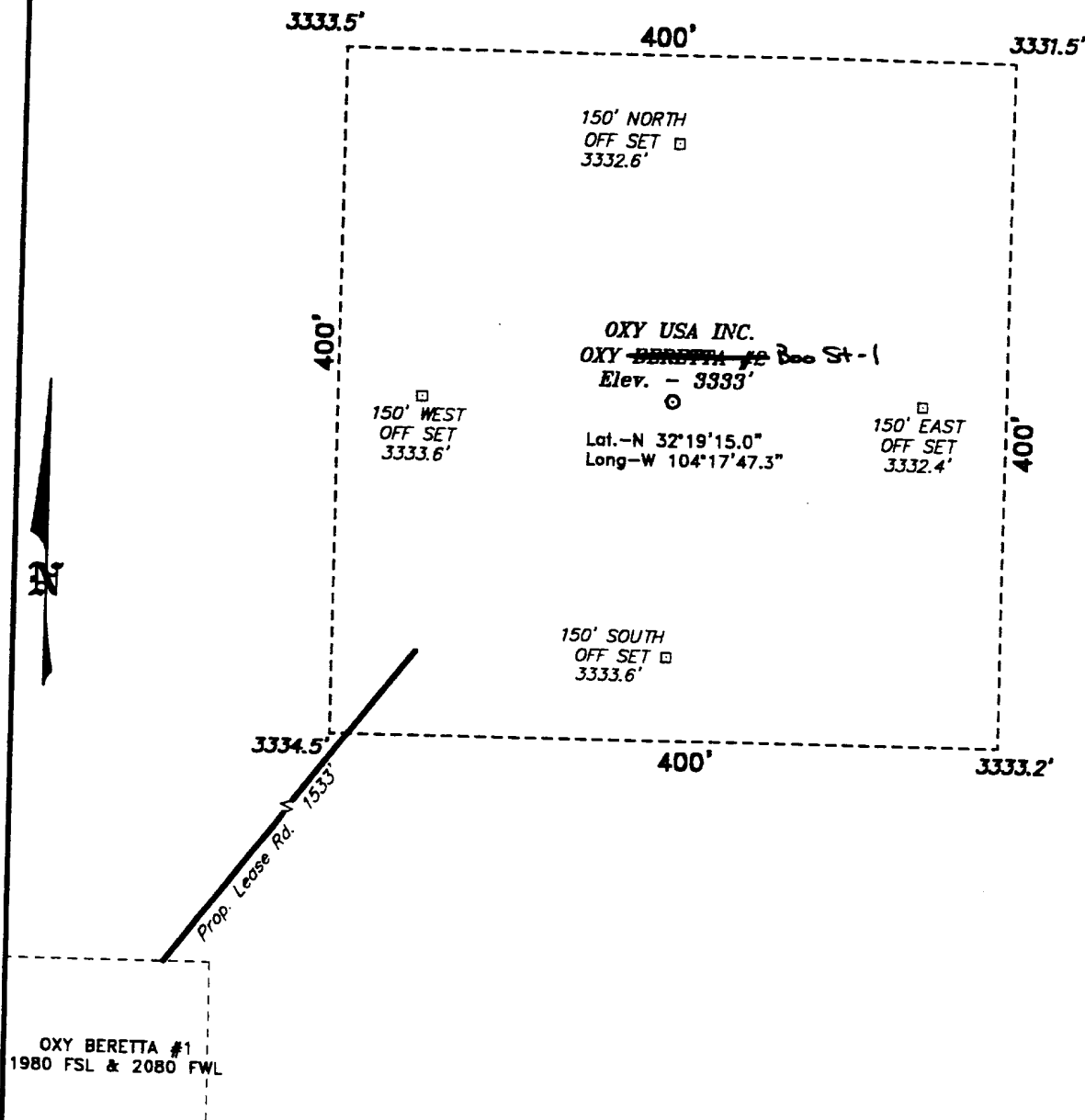
BLOWOUT PREVENTOR SCHEME

EXHIBIT A



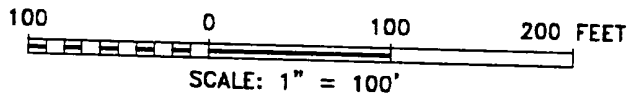
7-1/16" 10000# ram type preventers with one set blind rams and one set pipe rams and a 10000# annular type preventer. A choke manifold and 120 gallon accumulator with floor and remote operating stations and auxiliary power system.

SECTION 9, TOWNSHIP 23 SOUTH, RANGE 26 EAST, N.M.P.M.,
EDDY COUNTY, NEW MEXICO.



Directions to Location:

FROM THE JUNCTION OF US HWY 62/180 AND CO. RD. 408, GO WEST ON CO. RD. 408 APPROX. 1 MILE TO A POINT WHICH LIES APPROX. 2 MILES SOUTH OF THE PROPOSED WELL LOCATION.



BASIN SURVEYS P.O. BOX 1786-HOBBS, NEW MEXICO

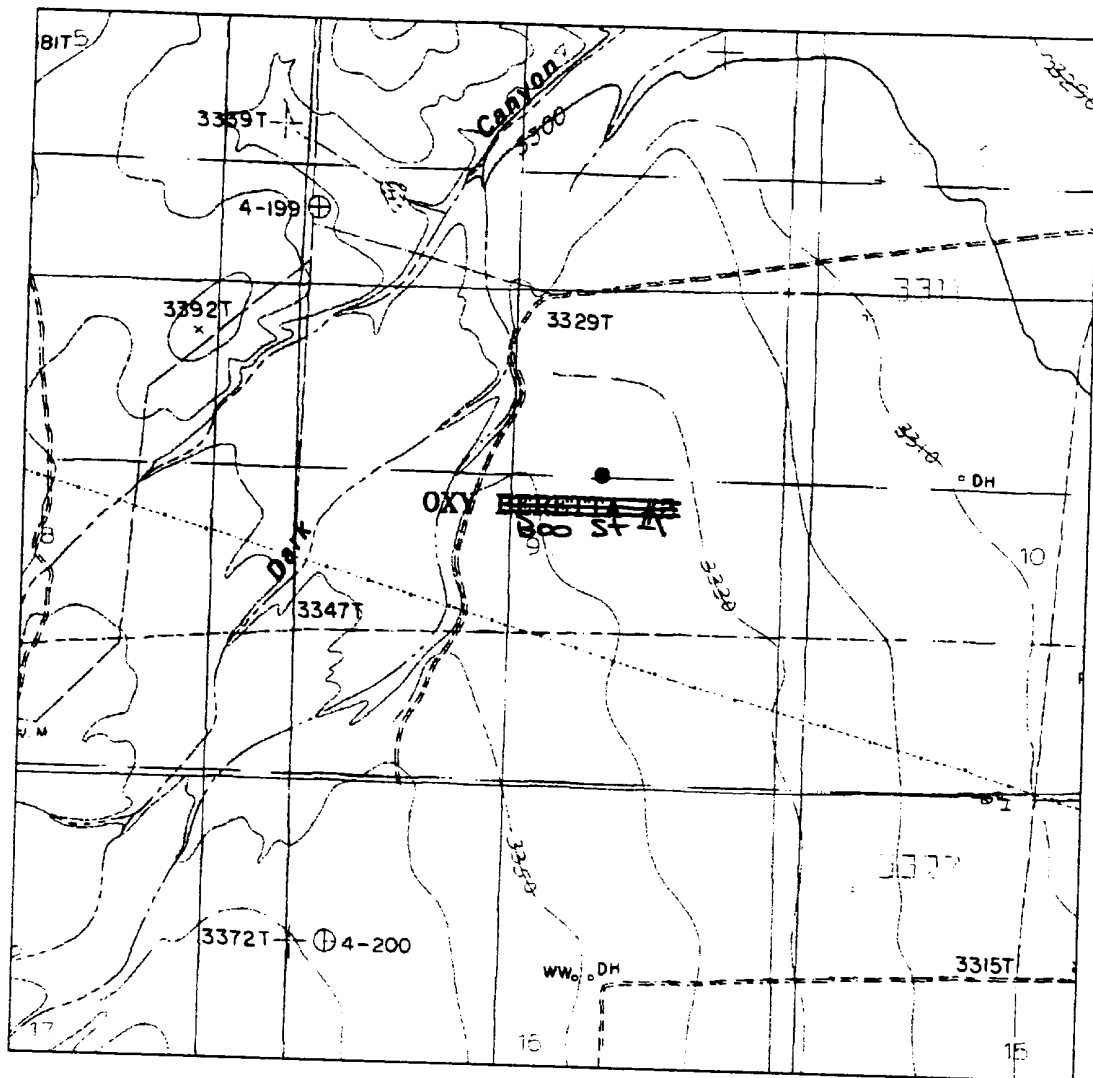
W.O. Number: 0244 Drawn By: K. GOAD
Date: 05-05-2000 Disk: KJG #122 - 0244A.DWG

Oxy USA Inc.

REF: Oxy ~~BERETTA~~ No. 1 / Well Pad Topo

~~Basin State 1~~
THE OXY ~~BERETTA~~ No. 1 LOCATED 1980' FROM THE NORTH LINE AND 1980' FROM THE EAST LINE OF SECTION 9, TOWNSHIP 23 SOUTH, RANGE 26 EAST, N.M.P.M., EDDY COUNTY, NEW MEXICO.

Survey Date: 05-01-2000 Sheet 1 of 1 Sheets



800 ST-1
 OXY ~~BERETTA~~ #2
 Located at 1980' FNL and 1980' FEL
 Section 9, Township 23 South, Range 26 East,
 N.M.P.M., Eddy County, New Mexico.

basin
surveys
 focused on excellence
 in the oilfield

P.O. Box 1786
 1120 N. West County Rd.
 Hobbs, New Mexico 88241
 (505) 393-7316 - Office
 (505) 392-3074 - Fax
 basinsurveys.com

W.O. Number: 0244AA - KJG #122

Survey Date: 05-01-2000

Scale: 1" = 2000'

Date: 05-05-2000

OXY USA INC.

