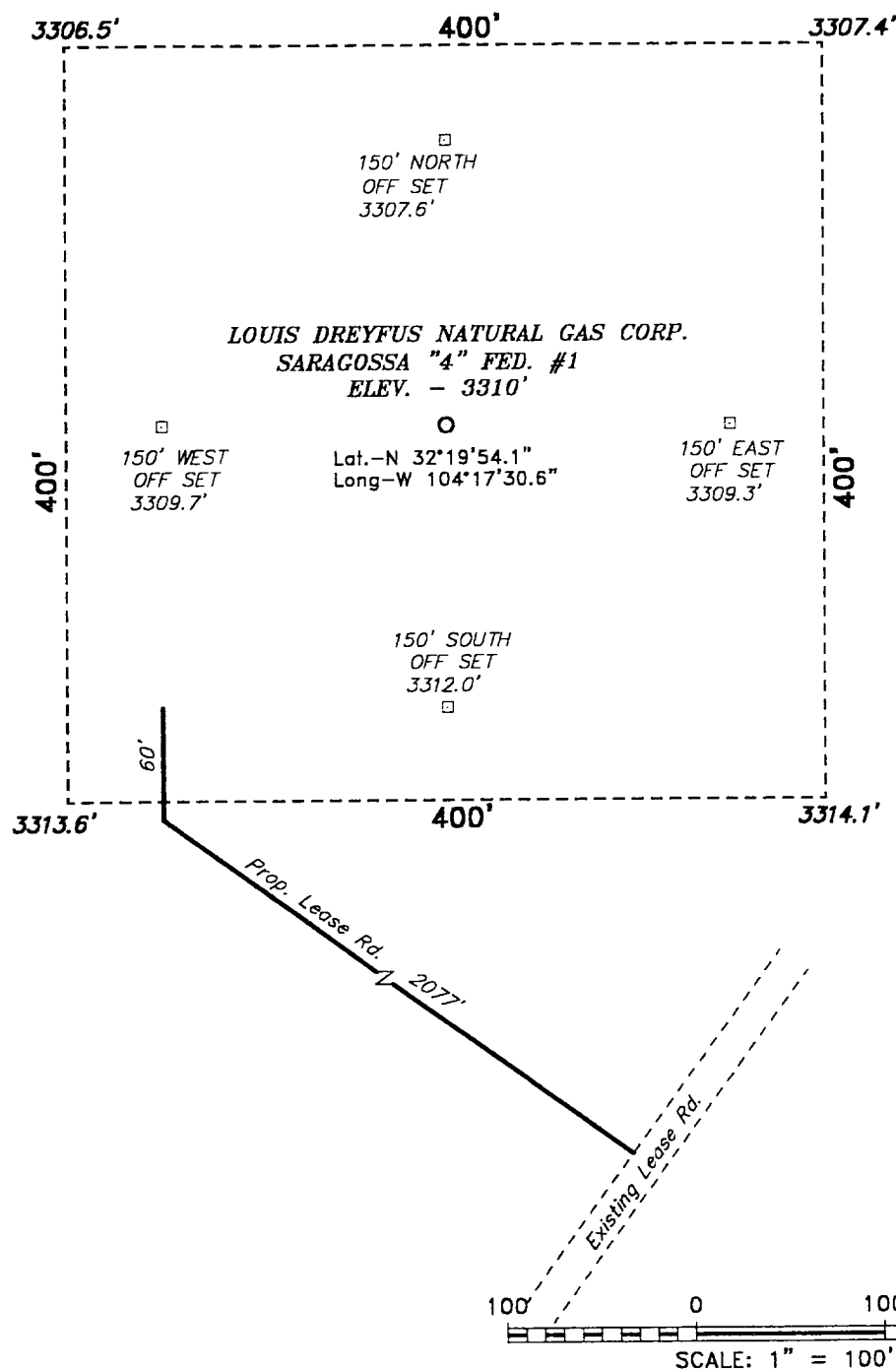


**SECTION 4, TOWNSHIP 23 SOUTH, RANGE 26 EAST, N.M.P.M.,
EDDY COUNTY, NEW MEXICO.**



Directions to Location:

FROM THE JUNCTION OF US HWY 62/180 AND
GILLOCK ROAD, GO WEST AND NORTH ON GILLOCK
ROAD FOR APPROX. 2.0 MILES TO LEASE ROAD;
THENCE WEST ON LEASE ROAD FOR APPROX. 1.0
MILE TO PROPOSED LEASE ROAD.

Louis Dreyfus Natural Gas Corp.

REF: Saragossa "4" Fed. #1 / Well Pad Topo

THE SARAGOSSA "4" FED. No. 1 LOCATED 1980' FROM
THE SOUTH LINE AND 660' FROM THE EAST LINE OF
SECTION 4, TOWNSHIP 23 SOUTH, RANGE 26 EAST,
N.M.P.M., EDDY COUNTY, NEW MEXICO.

BASIN SURVEYS P.O. BOX 1786—HOBBS, NEW MEXICO

Drawn By: **K. GOAD**

Sheet 1 of 1 Sheets