

District I
PO Box 1980, Hobbs, NM 88241

District II
811 South First, Artesia, NM 88210

District III
1000 Rio Brazos Rd., Aztec, NM 87410

District IV
2040 South Pacheco, Santa Fe, NM 87505

State of New Mexico
Energy, Minerals & Natural Resources Department

OIL CONSERVATION DIVISION
2040 South Pacheco
Santa Fe, NM 87505

Form C-101
Revised October 18, 1994
Instructions on back
Submit to Appropriate District Office
State Lease - 6 Copies
Fee Lease - 5 Copies

☐ AMENDED REPORT

APPLICATION FOR PERMIT TO DRILL, RE-ENTER, DEEPEN, PLUGBACK, OR ADD A ZONE

Operator Name and Address Mewbourne Oil Company PO Box 5270 Hobbs, New Mexico 88241		OGRID Number 14744
		API Number 30 - 015 - 32220
Property Code 29521	Property Name Outlaw Flats 1 State Com	Well No. 1

Surface Location

UL or lot no.	Section	Township	Range	Lot Idn	Feet from the	North/South line	Feet from the	East/West Line	County
O	1	24S	24E		660	South	1400	East	Eddy

Proposed Bottom Hole Location If Different From Surface

UL or lot no.	Section	Township	Range	Lot Idn	Feet from the	North/South line	Feet from the	East/West Line	County
Proposed Pool 1 Baldridge Canyon Morrow					Proposed Pool 2				

Work Type Code N	Well Type Code G	Cable/Rotary R	Lease Type Code S	Ground Level Elevation 3958
Multiple	Proposed Depth 10900	Formation Morrow	Contractor TBA	Spud Date 12-26-01

Proposed Casing and Cement Program

Hole Size	Casing Size	Casing weight/foot	Setting Depth	Sacks of Cement	Estimated TOC
17 1/2"	13 3/8"	48#	400	400	Surface
12 1/4"	8 5/8"	32#	2600	800	Surface
7 7/8"	5 1/2"	17#	10900	600	Wolfcamp

Describe the proposed program. If this application is to DEEPEN or PLUG BACK give the data on the present productive zone and proposed new productive zone. Describe the blowout prevention program, if any. Use additional sheets if necessary

BOP Program attached.

Mud Program:

0-400'...FW w/ sweeps
400'-2600'...FW w/ sweeps
2600'-9000'...Cut Brine w/ sweeps
9000'-TD...Cut brine & Mud

8 5/8"
NOTIFY SPUD & TIME TO WITNESS
CEMENTING of 9 5/8" CASING

I hereby certify that the information given above is true and complete to the best of my knowledge and belief.

Signature:

Printed name: N.M. Young

Title: District Manager

Approved By:

OIL CONSERVATION DIVISION
ORIGINAL SIGNED BY TIM W. GUM
DISTRICT II SUPERVISOR

Title:

Approval Date:

FEB 26 2002

Expiration Date:

FEB 26 2003

DISTRICT II

811 South First, Artesia, NM 88210

DISTRICT III

1000 Rio Brazos Rd., Aztec, NM 87410

DISTRICT IV

2040 South Pacheco, Santa Fe, NM 87505

Instruction on back
Submit to Appropriate District Office

State Lease - 4 Copies

Fee Lease - 3 Copies

OIL CONSERVATION DIVISION

P.O. Box 2088

Santa Fe, New Mexico 87504-2088

☐ AMENDED REPORT

WELL LOCATION AND ACREAGE DEDICATION PLAT

API Number	Pool Code	Pool Name
Property Code	Property Name OUTLAW FLATS "1" STATE	Well Number 1
OGRID No.	Operator Name MEWBOURNE OIL COMPANY	Elevation 3958

Surface Location

UL or lot No.	Section	Township	Range	Lot Idn	Feet from the	North/South line	Feet from the	East/West line	County
0	1	24S	24E		660	SOUTH	1400	EAST	EDDY

Bottom Hole Location If Different From Surface

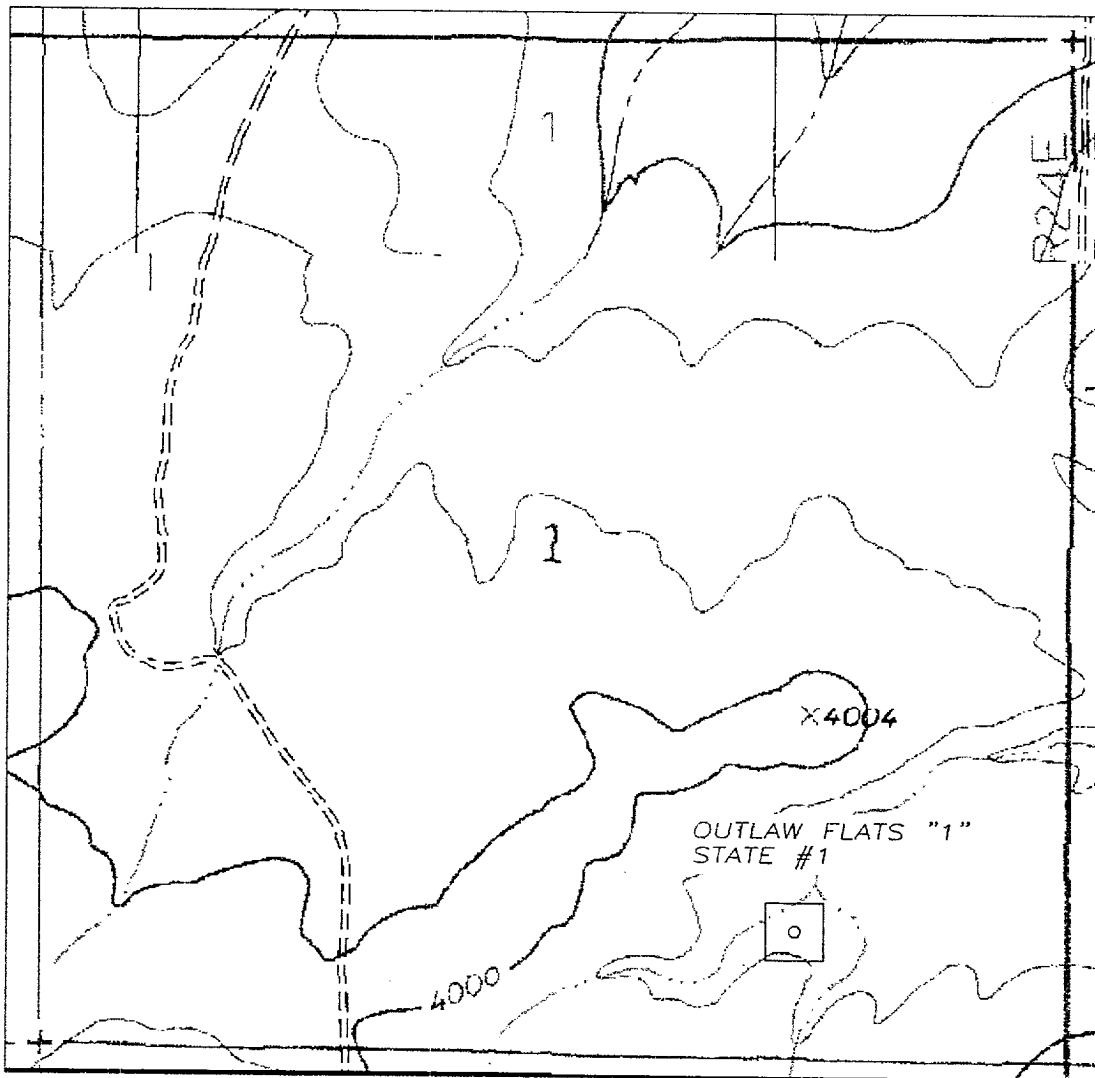
UL or lot No.	Section	Township	Range	Lot Idn	Feet from the	North/South line	Feet from the	East/West line	County

Dedicated Acres	Joint or Infill	Consolidation Code	Order No.

NO ALLOWABLE WILL BE ASSIGNED TO THIS COMPLETION UNTIL ALL INTERESTS HAVE BEEN CONSOLIDATED
OR A NON-STANDARD UNIT HAS BEEN APPROVED BY THE DIVISION

	OPERATOR CERTIFICATION I hereby certify the the information contained herein is true and complete to the best of my knowledge and belief. Signature N. M. Young Printed Name District Manager Title 2/19/02 Date	
	SURVEYOR CERTIFICATION I hereby certify that the well location shown on this plat was plotted from field notes of actual surveys made by me or under my supervision, and that the same is true and correct to the best of my belief. 12/04/2001 Date Surveyed Signature & Seal of Professional Surveyor Certificate No. Herschel L. Jones RLS 3640 OUTLAW 1-1A GENERAL SURVEYING COMPANY	

SECTION 1, TOWNSHIP 24 S TH, RANGE 24 EAST, NMPM, EDL COUNTY, NEW MEXICO.



1000' 0 1000' 2000'
Scale 1" = 1000'

THE PREPARATION OF THIS PLAT AND THE PERFORMANCE OF THE SURVEY UPON WHICH IT IS BASED WERE DONE UNDER MY DIRECTION AND THE PLAT ACCURATELY DEPICTS THE RESULTS OF SAID SURVEY AND MEET THE REQUIREMENTS OF THE STANDARDS FOR LAND SURVEYS IN NEW MEXICO AS ADOPTED BY THE NEW MEXICO STATE BOARD OF REGISTRATION FOR PROFESSIONAL ENGINEERS AND LAND SURVEYORS.

Herschel L. Jones
2640
HERSCHEL L. JONES R. 3640
PROFESSIONAL LAND SURVEYOR

GENERAL SURVEYING COMPANY P.O. BOX 1928
LOVINGTON, NEW MEXICO 88260

MEWBOURNE OIL COMPANY

MEWBOURNE OUTLAW FLATS "1" STATE #1 WELL
LOCATED IN SECTION 1, TOWNSHIP 24 SOUTH,
RANGE 24 EAST, NMPM, EDDY COUNTY, NEW
MEXICO.

Survey Date: 12/04/2001	Sheet 1 of 1 Sheets
Drawn By: Ed Blevins	W.O. Number
Date: 12/05/01	Scale 1" = 1000' OUTLAW

Mewbourne Oil Company
BOP Schematic for
12 1/4" Hole

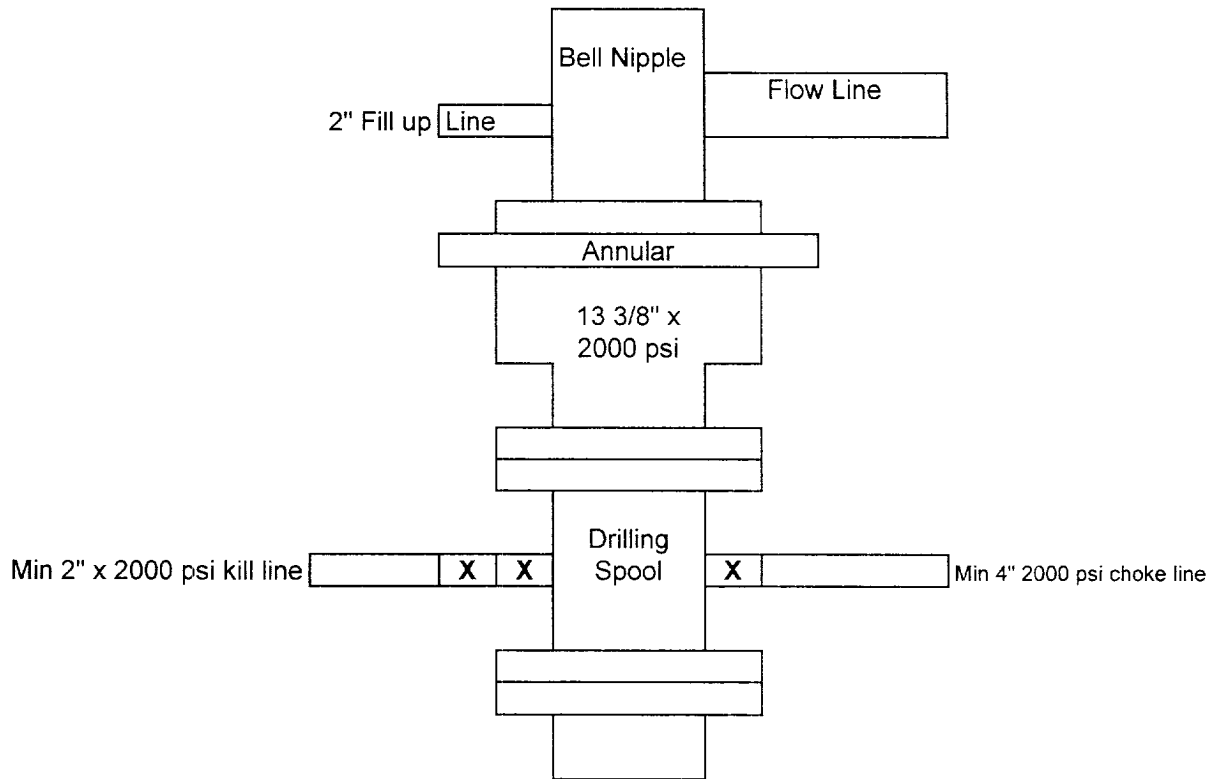


Exhibit #2

Outlaw Flats 1 State Com #1
660' FSL & 1400' FEL
Sec.1 T-24S R-24E
Eddy, County New Mexico

BOP Scematic for 8 3/4" or 7 7/8" Hole

