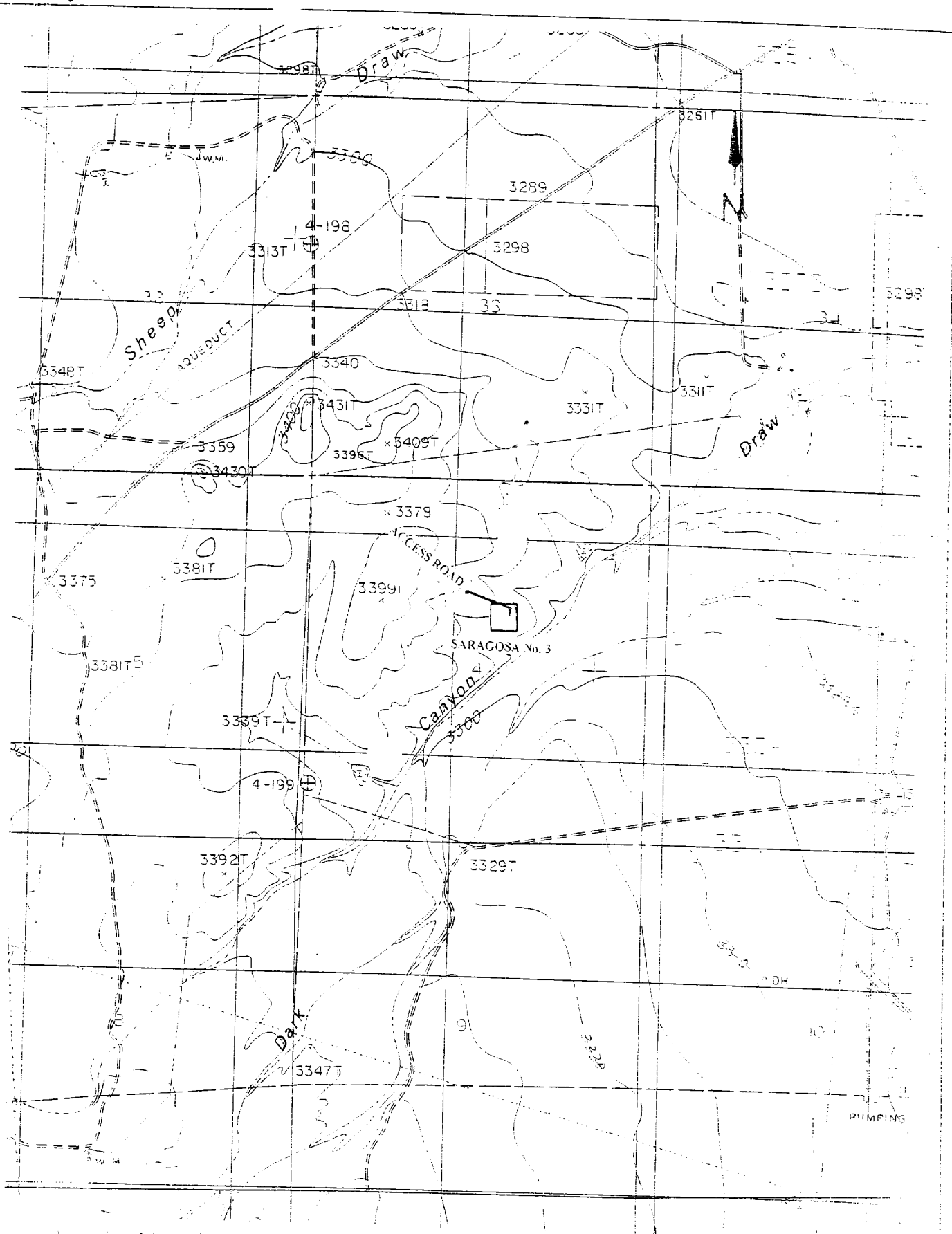


Exhibit "B"



Location Map of a pad and access road for the Saragosa "4" Federal well No. 3 for Dominion Oklahoma Texas E&P INC. in Section 4, T 23S, R 26E, NMPM, Eddy County, New Mexico. Map Reference 7.5' Series; Kitchen Cove, NM (Prov. Ed. 1985) 32104-C3