

District I
1625 N. French Dr., Hobbs, NM 88240
District II
811 South First, Artesia, NM 88210
District III
1000 Rio Brazos Road, Aztec, NM 87410
District IV
2040 South Pacheco, Santa Fe, NM 87505

State of New Mexico
Energy Minerals and Natural Resources

Oil Conservation Division
2040 South Pacheco
Santa Fe, NM 87505

COPY

Form C-101
Revised March 17, 1999

Submit to appropriate District Office
State Lease - 6 Copies
Fee Lease - 5 Copies

☐ AMENDED REPORT

APPLICATION FOR PERMIT TO DRILL, RE-ENTER, DEEPEN, PLUGBACK, OR ADD A ZONE

¹ Operator Name and Address Nadel and Gussman Permian 601 N. Marienfeld, Suite 508, Midland, Texas 79701		² OGRID Number 155615
		³ API Number 30-015-32351
⁴ Property Code 29891	⁵ Property Name Carlsbad South State Com	⁶ Well No. 7

Surface Location

UL or lot no. M	Section 27	Township 23-S	Range 26-E	Lot Idn	Feet from the 1310'	North/South line South	Feet from the 660'	East/West line West	County Eddy
---------------------------	----------------------	-------------------------	----------------------	---------	-------------------------------	----------------------------------	------------------------------	-------------------------------	-----------------------

Proposed Bottom Hole Location If Different From Surface

UL or lot no.	Section	Township	Range	Lot Idn	Feet from the	North/South line	Feet from the	East/West line	County
---------------	---------	----------	-------	---------	---------------	------------------	---------------	----------------	--------

Proposed Pool 1

South Carlsbad Morrow (73960)

Proposed Pool 2

¹¹ Work Type Code N	¹² Well Type Code G	¹³ Cable/Rotary Rotary	¹⁴ Lease Type Code S	¹⁵ Ground Level Elevation 3320'
¹⁶ Multiple No	¹⁷ Proposed Depth 12,200	¹⁸ Formation Morrow	¹⁹ Contractor TBD	²⁰ Spud Date ~08 / 01 / 02

Proposed Casing and Cement Program

Hole Size	Casing Size	Casing weight/foot	Setting Depth	Sacks of Cement	Estimated TOC
17-1/2"	13-3/8"	48#, H-40	500'	650	Circulated
12-1/4"	9-5/8"	36#, J-55	4000'	1400	Circulated
7-7/8"	5-1/2"	17#, N-80	12,200'	850	9000'

2 Describe the proposed program. If this application is to DEEPEN or PLUG BACK, give the data on the present productive zone and proposed new productive zone. Describe the blowout prevention program, if any. Use additional sheets if necessary.

Drill and complete well in Morrow at a projected TD of 11,500'. A BOP schematic is attached and a 5000 psi tree will be nipped up prior to perforating. A DV tool may be used if zones above the Morrow are prospective. The Morrow will be completed with thru-tubing or tubing conveyed guns. Will notify NMOCD in sufficient time to witness cementing the surface and intermediate casing.

²³ I hereby certify that the information given above is true and complete to the best of my knowledge and belief.

Signature: *Kem E. McCready*

Printed name: **Kem E. McCready**

Title: **Operations Engineer**

Date: **6/27/02**

Phone: **915 - 682 - 4429**

OIL CONSERVATION DIVISION

Approved by:

ORIGINAL SIGNED BY TIM W. GUM
DISTRICT II SUPERVISOR

Title:

Approval Date: **JUL 01 2002** Expiration Date: **JUL 01 2003**

Conditions of Approval:

Attached ☐

DISTRICT I
1825 N. French Dr., Hobbs, NM 88240

DISTRICT II
811 South First, Artesia, NM 88210

DISTRICT III
1000 Rio Brazos Rd., Aztec, NM 87410

DISTRICT IV
2040 South Pacheco, Santa Fe, NM 87505

State of New Mexico
Energy, Minerals and Natural Resources Department

OIL CONSERVATION DIVISION

2040 South Pacheco
Santa Fe, New Mexico 87504-2088

COPY JUN 11 2002

Form C-102
Revised March 17, 1999

Submit to Appropriate District Office
State Lease - 4 Copies
Fee Lease - 3 Copies

☐ AMENDED REPORT

WELL LOCATION AND ACREAGE DEDICATION PLAT

API Number 30-015-	Pool Code 73960	Pool Name South Carlsbad Morrow
Property Code	Property Name CARLSBAD SOUTH STATE COM "27"	Well Number 7
OGRID No. 155615	Operator Name NADEL AND GUSSMAN PERMIAN, L.L.C.	Elevation 3320'

Surface Location

UL or lot No.	Section	Township	Range	Lot Idn	Feet from the	North/South line	Feet from the	East/West line	County
M	27	23 S	26 E		1310	SOUTH	660	WEST	EDDY

Bottom Hole Location If Different From Surface

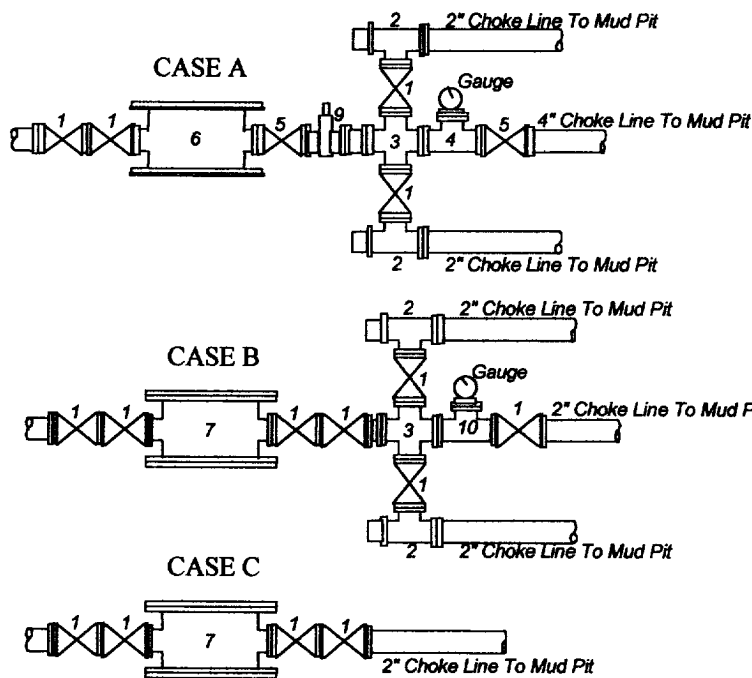
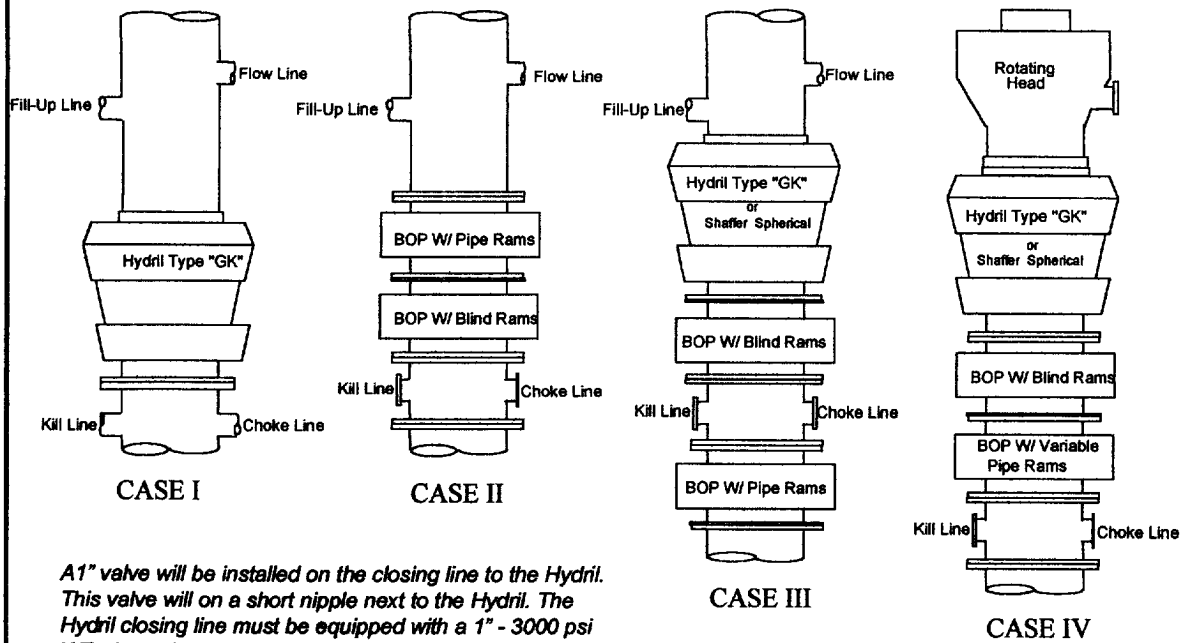
UL or lot No.	Section	Township	Range	Lot Idn	Feet from the	North/South line	Feet from the	East/West line	County
Dedicated Acres South 320	Joint or Infill	Consolidation Code	Order No.						

NO ALLOWABLE WILL BE ASSIGNED TO THIS COMPLETION UNTIL ALL INTERESTS HAVE BEEN CONSOLIDATED
OR A NON-STANDARD UNIT HAS BEEN APPROVED BY THE DIVISION

		OPERATOR CERTIFICATION I hereby certify the the information contained herein is true and complete to the best of my knowledge and belief. K.E. McCreedy Signature K.E. McCreedy Printed Name Operations Engr. Title 6/27/02 Date
		SURVEYOR CERTIFICATION I hereby certify that the well location shown on this plat was plotted from field notes of actual surveys made by me or under my supervision, and that the same is true and correct to the best of my belief. MAY 22 2002 Date Surveyed GARY L. JONES Signature & Seal of Professional Surveyor W.O. No. 2536 Certificate No. GARY L. JONES 7977 BASIN SURVEYS

Nadel and Gussman Permian
Carlsbad South State Com 27 Well #/

MINIMUM BLOWOUT PREVENTER REQUIREMENTS



BOP SIZE	BOP CASE	WORKING PRESSURE	CHOKE CASE
13-5/8	III	3000	A
11"	IV	5000	A

***Rotating head required**

Bradenhead : _____
Mfr: _____
Size: _____ Type: _____

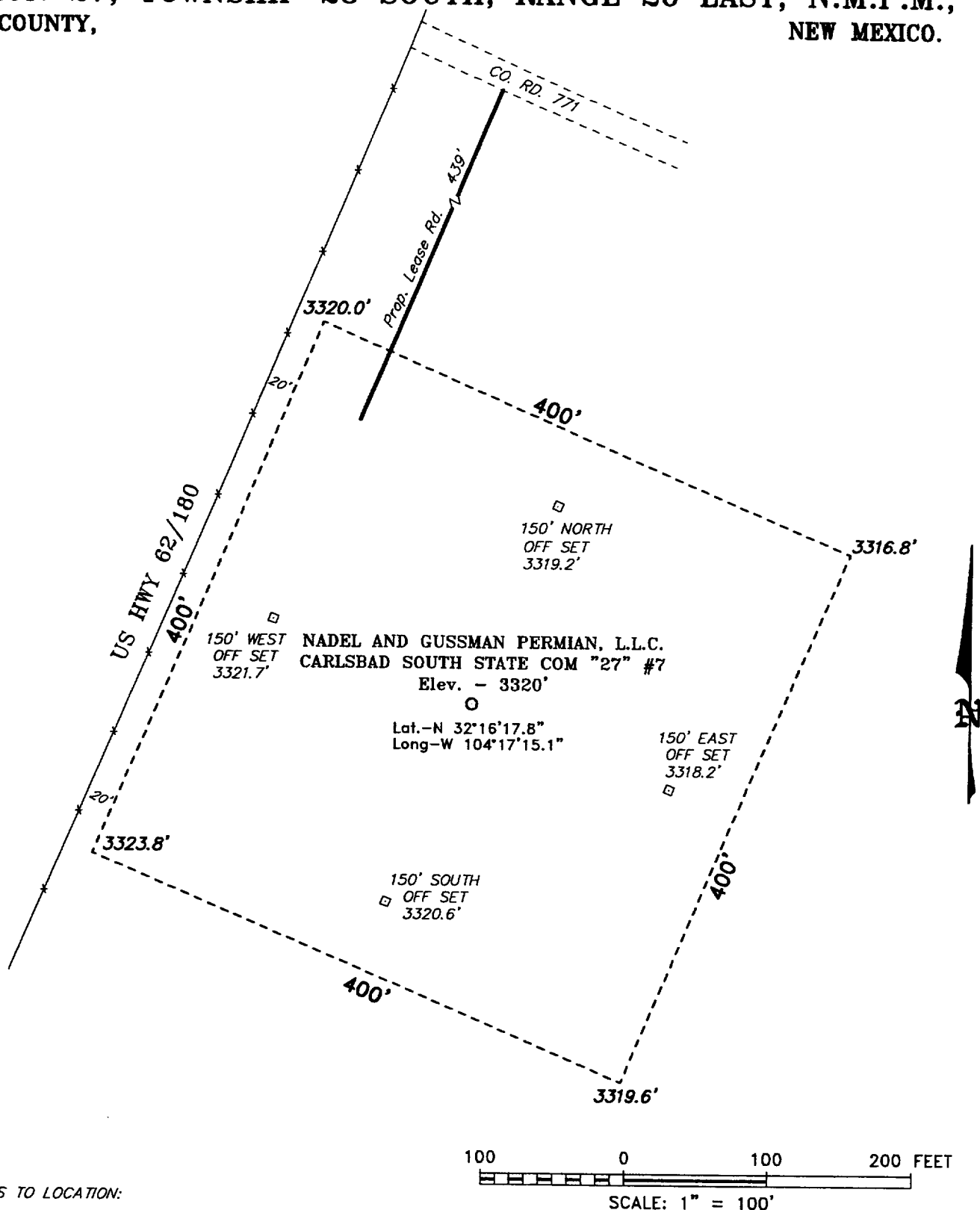
Legend

- 2" flanged all steel valve must be either Cameron "F", Halliburton Low Torque or Shaffer Flo-Seal.
- 2" flanged adjustable chokes, min. 1" full opening & equipped with hard trim.
- 4" x 2" flanged steel cross.
- 4" flanged steel tee.
- 4" flanged all steel valve (Type as in no. 1).
- Drilling Spool with 2" x 4" flanged outlet.
- Drilling Spool with 2" x 2" flanged outlet.
- 2" x 2" flanged steel cross.
- 4" pressure operated gate valve.
- 2" flanged steel tee.

Notes

Choke manifold may be located in any convenient position. Use all steel fittings throughout. Make 90° turns with bull plugged tees only. No field welding will be permitted on any of the components of the choke manifold and related equipment upstream of the chokes. The choke spool and all lines and fittings must be at least equivalent to the test pressure of the preventers required. Independent closing control unit with clearly marked controls to be located on derrick floor near driller's position.

SECTION 27, TOWNSHIP 23 SOUTH, RANGE 26 EAST, N.M.P.M.,
EDDY COUNTY, NEW MEXICO.



DIRECTIONS TO LOCATION:

FROM THE JUNCTION OF CO. RD. 408 (DARK CANYON ROAD) AND US HWY 62/180, GO SOUTH ON US HWY 62/180 TO CO. RD. 771; THENCE SOUTHEAST ON CO. RD. 771 FOR APPROX. 20 FEET TO THE PROPOSED LEASE ROAD.

NADEL AND GUSSMAN PERMIAN, L.L.C.

REF: CARLSBAD SOUTH STATE COM "27" #7 / Well Pad Topo

THE CARLSBAD SOUTH STATE COM "27" No. 7 LOCATED 1310' FROM THE SOUTH LINE AND 660' FROM THE WEST LINE OF SECTION 27, TOWNSHIP 23 SOUTH, RANGE 26 EAST, N.M.P.M., EDDY COUNTY, NEW MEXICO.

BASIN SURVEYS

P.O. BOX 1786 - HOBBS, NEW MEXICO

W.O. Number: 2536

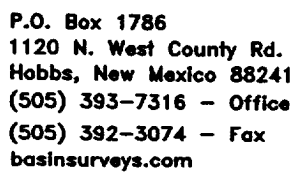
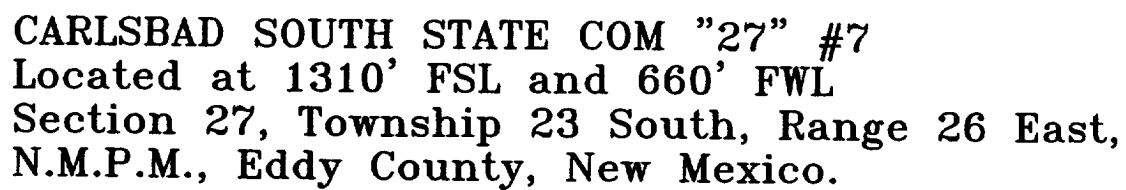
Drawn By: K. GOAD

Date: 05-31-2002

Disk: KJG CD#4 - 2536A.DWG

Survey Date: 05-29-2002

Sheet 1 of 1 Sheets



Date: 05-31-2002

NADEL AND GUSSMAN
PERMIAN, L.L.C.