

District I  
1625 N. French Dr., Hobbs, NM 88240  
District II  
811 South First, Artesia, NM 88210  
District III  
1000 Rio Brazos Road, Aztec, NM 87410  
District IV  
2040 South Pacheco, Santa Fe, NM 87505

State of New Mexico  
Energy Minerals and Natural Resources  
Oil Conservation Division  
2040 South Pacheco  
Santa Fe, NM 87505

Form C-101  
Revised March 17, 1999

Submit to appropriate District Office  
State Lease - 6 Copies  
Fee Lease - 5 Copies

☐ AMENDED REPORT

CISF  
BLM  
gpr

# APPLICATION FOR PERMIT TO DRILL, RE-ENTER, DEEPEN, PLUGBACK, OR ADD A ZONE

<sup>1</sup> Operator Name and Address MARBOB ENERGY CORPORATION PO BOX 227 ARTESIA, NM 88211-0227		<sup>2</sup> OGRID Number 14049
<sup>3</sup> Property Code 28067		<sup>4</sup> API Number 30-015-32374
<sup>5</sup> Property Name WALTERTHON FEE		<sup>6</sup> Well No. 2

## <sup>7</sup> Surface Location

UL or lot no.	Section	Township	Range	Lot Idn	Feet from the	North/South line	Feet from the	East/West line	County
D	21	22S	27E		855	NORTH	660	WEST	EDDY

## <sup>8</sup> Proposed Bottom Hole Location If Different From Surface

UL or lot no.	Section	Township	Range	Lot Idn	Feet from the	North/South line	Feet from the	East/West line	County
<sup>9</sup> Proposed Pool 1 CARLSBAD SOUTH MORROW					<sup>10</sup> Proposed Pool 2				

<sup>11</sup> Work Type Code N	<sup>12</sup> Well Type Code G	<sup>13</sup> Cable/Rotary R	<sup>14</sup> Lease Type Code P	<sup>15</sup> Ground Level Elevation 3115' GL
<sup>16</sup> Multiple NO	<sup>17</sup> Proposed Depth 12000'	<sup>18</sup> Formation MORROW	<sup>19</sup> Contractor UTI	<sup>20</sup> Spud Date 7/29/02

## <sup>21</sup> Proposed Casing and Cement Program

Hole Size	Casing Size	Casing weight/foot	Setting Depth	Sacks of Cement	Estimated TOC
17 1/2"	13 3/8"	48#	350'	300 SX	CIRC TO SURF
12 1/4"	9 5/8"	36#	1700'	900 SX	CIRC TO SURF
8 3/4"	7"	23#	9000'	1600 SX	TIE BACK IN
6 1/8"	4 1/2" LINER	11.6#	12000'	350 SX	CIRC

<sup>22</sup> Describe the proposed program. If this application is to DEEPEN or PLUG BACK, give the data on the present productive zone and proposed new productive zone.  
Describe the blowout prevention program, if any. Use additional sheets if necessary.

DRILL 17 1/2" HOLE TO 350', SET 13 3/8" CSG & CIRC CMT, NU BOPE & DRILL 12 1/4" HOLE TO 1700', SET 9 5/8" CSG & CIRC CMT, NU & TEST BOPE, DRILL 8 3/4" HOLE TO 9000', SET 7" CSG & ATTEMPT TO TIE BACK, NU & TEST BOPE, DRILL 6 1/8" HOLE TO 12000', DST POTENTIALLY PRODUCTIVE HORIZONS.

<sup>23</sup> I hereby certify that the information given above is true and complete to the best of my knowledge and belief.

Signature: *Diana J. Cannon*  
Printed name: DIANA J. CANNON

Title: PRODUCTION ANALYST

Date: 7/12/02

Phone: (505) 748-3303

OIL CONSERVATION DIVISION

Approved by:

ORIGINAL SIGNED BY TIM W. CUN  
DISTRICT II SUPERVISOR

Title:

Approval Date: JUL 16 2002

Expiration Date: JUL 16 2003

Conditions of Approval:

Attached ☐

DISTRICT I  
P.O. Box 1980, Hobbs, NM 88241-1980

State of New Mexico  
Energy, Minerals and Natural Resources Department

Form C-102  
Revised February 10, 1994  
Submit to Appropriate District Office  
State Lease - 4 Copies  
Fee Lease - 3 Copies

DISTRICT II  
P.O. Drawer DD, Artesia, NM 88211-0719

DISTRICT III  
1000 Rio Brazos Rd., Aztec, NM 87410

DISTRICT IV  
P.O. BOX 2088, SANTA FE, N.M. 87504-2088

OIL CONSERVATION DIVISION

P.O. Box 2088  
Santa Fe, New Mexico 87504-2088

☐ AMENDED REPORT

WELL LOCATION AND ACREAGE DEDICATION PLAT

API Number 30-015	Pool Code 73960	Pool Name CARLSBAD SOUTH MORROW
Property Code 28067	Property Name WALTERTHON FEE	Well Number 2
OGRID No. 14049	Operator Name MARBOB ENERGY CORPORATION	Elevation 3115'

Surface Location

UL or lot No. D	Section 21	Township 22-S	Range 27-E	Lot Idn	Feet from the 855	North/South line NORTH	Feet from the 660	East/West line WEST	County EDDY
--------------------	---------------	------------------	---------------	---------	----------------------	---------------------------	----------------------	------------------------	----------------

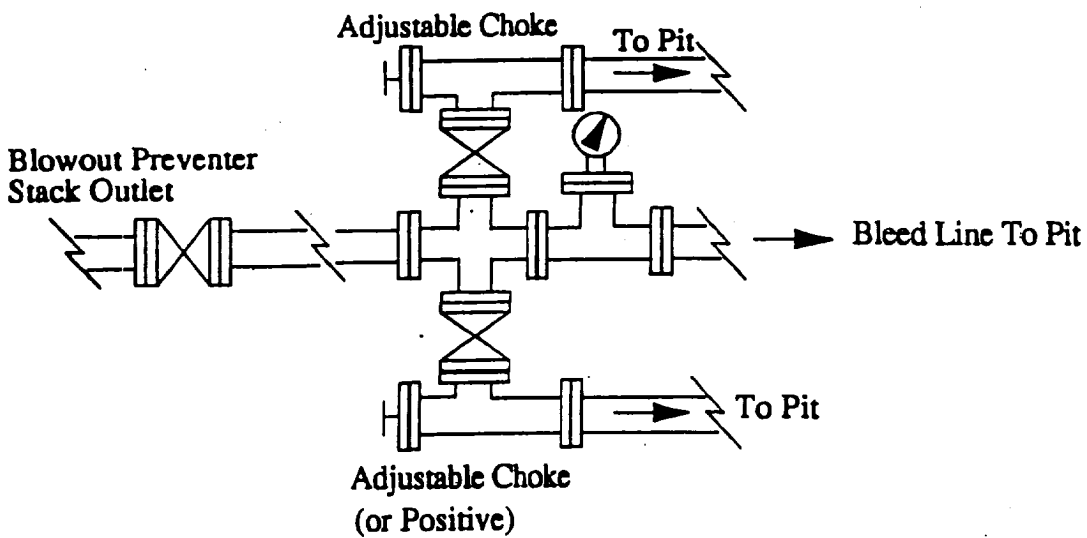
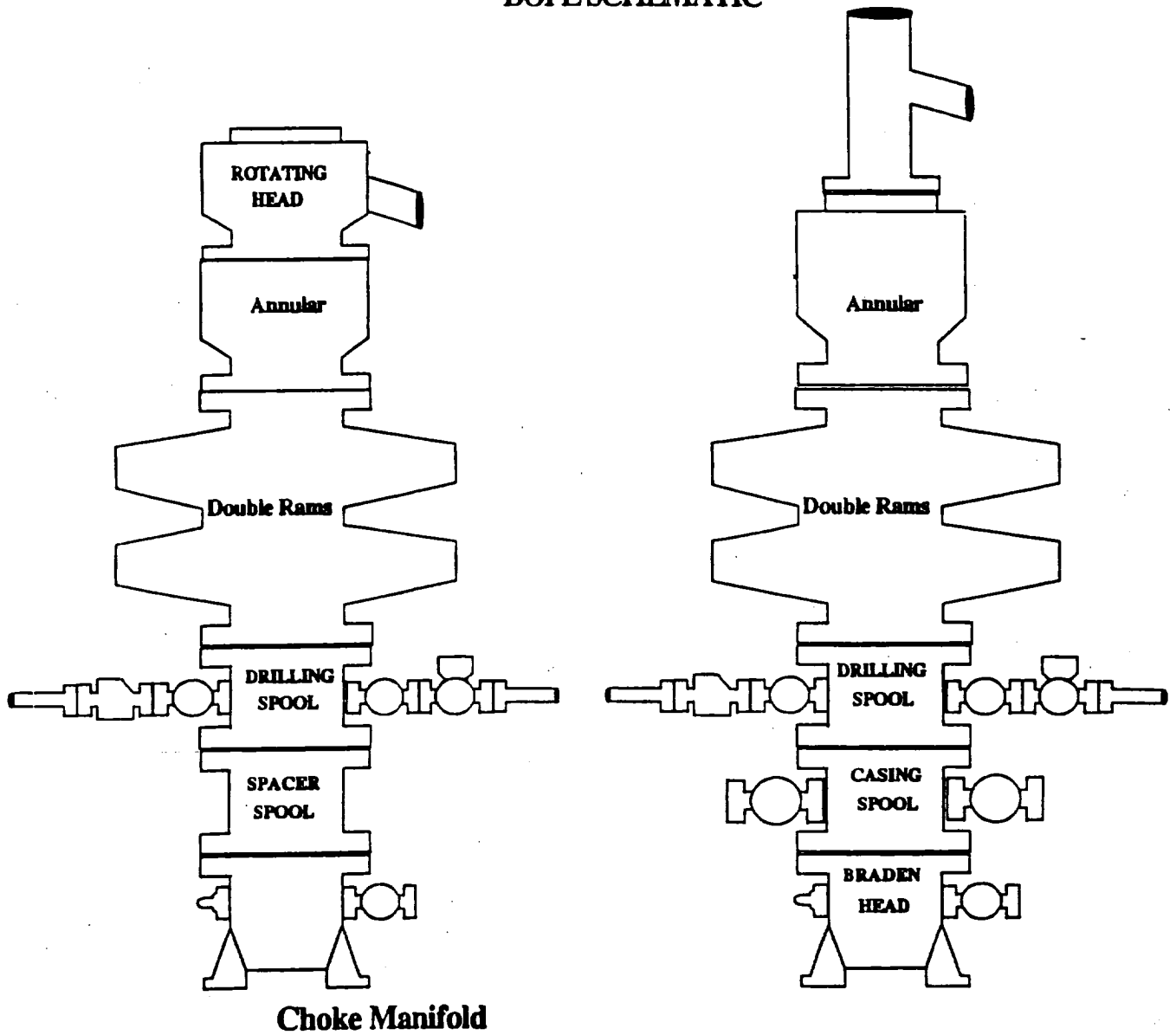
Bottom Hole Location If Different From Surface

UL or lot No.	Section	Township	Range	Lot Idn	Feet from the	North/South line	Feet from the	East/West line	County
					Dedicated Acres 320	Joint or Infill	Consolidation Code	Order No.	

NO ALLOWABLE WILL BE ASSIGNED TO THIS COMPLETION UNTIL ALL INTERESTS HAVE BEEN CONSOLIDATED  
OR A NON-STANDARD UNIT HAS BEEN APPROVED BY THE DIVISION

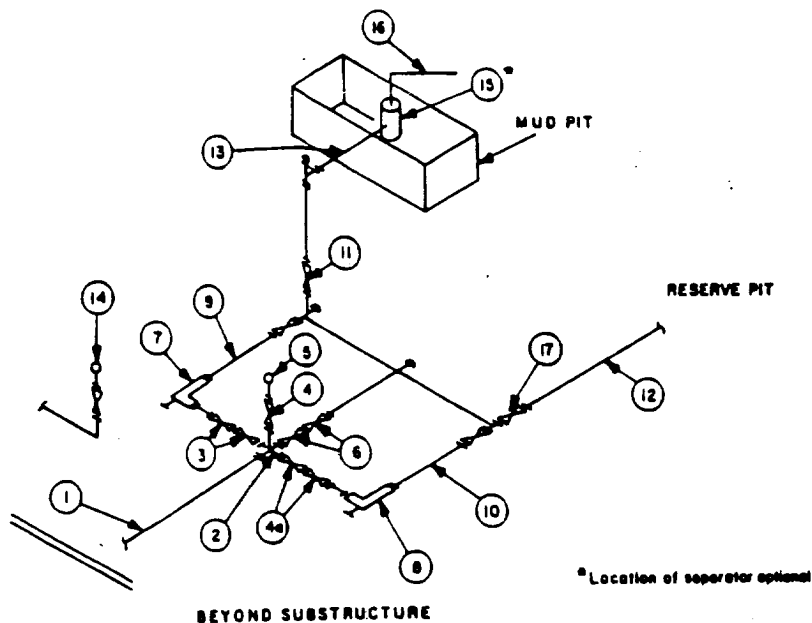
	<b>OPERATOR CERTIFICATION</b> <i>I hereby certify the the information contained herein is true and complete to the best of my knowledge and belief.</i>  Signature DIANA J. CANNON Printed Name PRODUCTION ANALYST Title JULY 12, 2002 Date	
	<b>SURVEYOR CERTIFICATION</b> <i>I hereby certify that the well location shown on this plat was plotted from field notes of actual surveys made by me or under my supervision, and that the same is true and correct to the best of my belief.</i> JULY 02, 2002 Date Surveyed Signature & Seal of Professional Surveyor  RONALD J. EIDSON Certificate No. 3239 GARY EIDSON 12641	

# BOPE SCHEMATIC



**MINIMUM CHOKE MANIFOLD**  
3,000, 5,000 and 10,000 PSI Working Pressure

**3 MWP - 5 MWP - 10 MWP**



MINIMUM REQUIREMENTS									
No.		3,000 MWP			5,000 MWP			10,000 MWP	
		I.D.	NOMINAL	RATING	I.D.	NOMINAL	RATING	I.D.	NOMINAL
1	Line from drilling spool		3"	3,000		3"	5,000		3"
2	Cross 3"x3"x3"x2"			3,000			5,000		10,000
	Cross 3"x3"x3"x3"								10,000
3	Valves (1) Gate <input type="checkbox"/> Plug <input type="checkbox"/> (2)	3-1/8"		3,000	3-1/8"		5,000	3-1/8"	10,000
4	Valve Gate <input type="checkbox"/> Plug <input type="checkbox"/> (2)	1-13/16"		3,000	1-13/16"		5,000	1-13/16"	10,000
4a	Valves (1)	2-1/16"		3,000	2-1/16"		5,000	3-1/8"	10,000
5	Pressure Gauge			3,000			5,000		10,000
6	Valves Gate <input type="checkbox"/> Plug <input type="checkbox"/> (2)	3-1/8"		3,000	3-1/8"		5,000	3-1/8"	10,000
7	Adjustable Choke (3)	2"		3,000	2"		5,000	2"	10,000
8	Adjustable Choke	1"		3,000	1"		5,000	2"	10,000
9	Line		3"	3,000		3"	5,000		3"
10	Line		2"	3,000		2"	5,000		3"
11	Valves Gate <input type="checkbox"/> Plug <input type="checkbox"/> (2)	3-1/8"		3,000	3-1/8"		5,000	3-1/8"	10,000
12	Lines		3"	1,000		3"	1,000		3"
13	Lines		3"	1,000		3"	1,000		3"
14	Remote reading compound standpipe pressure gauge			3,000			5,000		10,000
15	Gas Separator		2'x5'			2'x5'			2'x5'
16	Line		4"	1,000		4"	1,000		4"
17	Valves Gate <input type="checkbox"/> Plug <input type="checkbox"/> (2)	3-1/8"		3,000	3-1/8"		5,000	3-1/8"	10,000

(1) Only one required in Class 3M.

(2) Gate valves only shall be used for Class 10M.

(3) Remote operated hydraulic choke required on 5,000 psi and 10,000 psi for drilling.

**EQUIPMENT SPECIFICATIONS AND INSTALLATION INSTRUCTIONS**

- All connections in choke manifold shall be welded, studded, flanged or Cameron clamp of comparable rating.
- All flanges shall be API 6B or 6BX and ring gaskets shall be API RX or BX. Use only BX for 10 MWP.
- All lines shall be securely anchored.
- Chokes shall be equipped with tungsten carbide seats and needles, and replacements shall be available.
- Choke manifold pressure and standpipe pressure gauges shall be available at the choke manifold to assist in regulating chokes. As an alternate with automatic chokes, a choke manifold pressure gauge shall be located on the rig floor in conjunction with the standpipe pressure gauge.
- Line from drilling spool to choke manifold should be as straight as possible. Lines downstream from chokes shall make