

District I
PO Box 1980, Hobbs, NM 88241-1980

District II
811 South First, Artesia, NM 88210

District III
1000 Rio Brazos Rd., Aztec, NM 87410

District IV
2040 South Pacheco, Santa Fe, NM 87505

State of New Mexico
Energy, Minerals & Natural Resources Department

OIL CONSERVATION DIVISION
2040 South Pacheco
Santa Fe, NM 87505

Form C-10!
Revised October 18, 1994
Instructions on back
Submit to Appropriate District Office
State Lease - 6 Copies
Fee Lease - 5 Copies

☐ AMENDED REPORT

APPLICATION FOR PERMIT TO DRILL, RE-ENTER, DEEPEN, PLUGBACK, OR ADD A ZONE

1Operator Name and Address Mewbourne Oil Company PO Box 5270 Hobbs, NM 88240		2OGRID Number 14744
		3API Number 30 - 0 15-32999
4Property Code 30393	5Property Name West Loving "12" State Com	6Well No. 1

7Surface Location

UL or lot no.	Section	Township	Range	Lot Idn	Feet from the	North/South line	Feet from the	East/West Line	County
D	12	24S	27E		660	North	660	West	Eddy

8Proposed Bottom Hole Location If Differ

UL or lot no.	Section	Township	Range	Lot Idn	Feet from the	North/South li	Cement to cover all oil, gas and water bearing zones.
9Proposed Pool 1 Black River Morrow							

11Work Type Code N	12Well Type Code G	13Cable/Rotary R	14Lease Type Code S	15Ground Level Elevation 3129
16Multiple	17Proposed Depth 12800	18Formation Morrow	19Contractor TBA	20Spud Date ASAP

21Proposed Casing and Cement Program

Hole Size	Casing Size	Casing weight/foot	Setting Depth	Sacks of Cement	Estimated TOC
17 1/2"	13 3/8"	48#	500	500	Surface
12 1/4"	9 5/8"	40#	4500	1200	Surface
8 3/4"	5 1/2"	17#	12800	800	Abdo Wolfcamp

22Describe the proposed program. If this application is to DEEPEN or PLUG BACK give the data on the present productive zone and proposed new productive zone. Describe the blowout prevention program, if any. Use additional sheets if necessary.

BOP Program Attached

0-500' FW with sweeps
500'-4500' Salt water with sweeps
4500'-10000' FW with sweeps
10000'-12800' Cut Brine - Brine with mud

23I hereby certify that the information given above is true and complete to the best of my knowledge and belief.

Signature: Kristi Green for NM Young

Printed name: Kristi Green for District Manager

Title: Production Assistant for District Manager

OIL CONSERVATION DIVISION

Approved By: ORIGINAL SIGNED BY TIM W. SUM

DISTRICT II SUPERVISOR

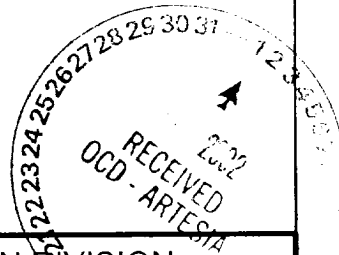
Title:

Approval Date:

AUG 1 2002

Expiration Date:

AUG 1 2003



DISTRICT I
1825 N. French Dr., Hobbs, NM 88240

DISTRICT II
811 South First, Artesia, NM 88210

DISTRICT III
1000 Rio Brazos Rd., Aztec, NM 87410

DISTRICT IV
2040 South Pacheco, Santa Fe, NM 87505

State of New Mexico
Energy, Minerals and Natural Resources Department

Form O-102
Revised March 17, 1999
Instruction on back
Submit to Appropriate District Office
State Lease - 4 Copies
Fee Lease - 3 Copies

OIL CONSERVATION DIVISION
P.O. Box 2088
Santa Fe, New Mexico 87504-2088

☐ AMENDED REPORT

WELL LOCATION AND ACREAGE DEDICATION PLAT

API Number	Pool Code	Pool Name
		Black River Morrow
Property Code	Property Name	Well Number
	WEST LOVING "12" STATE COM.	1
OGRID No.	Operator Name	Elevation
14744	MEWBOURNE OIL COMPANY	3129

Surface Location

UL or lot No.	Section	Township	Range	Lot Idn	Feet from the	North/South line	Feet from the	East/West line	County
D	12	24S	27E		660	NORTH	660	WEST	EDDY

Bottom Hole Location If Different From Surface

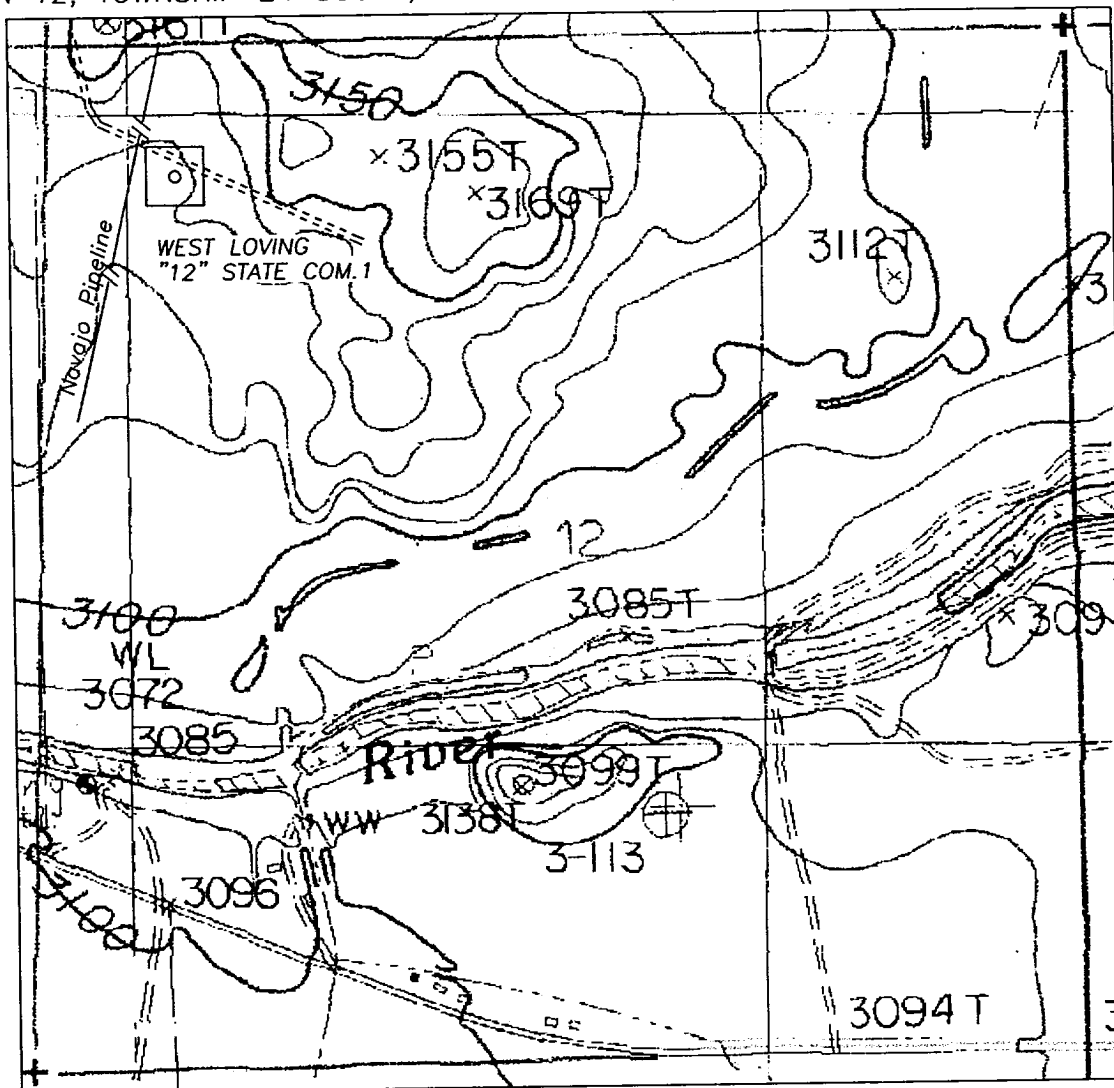
UL or lot No.	Section	Township	Range	Lot Idn	Feet from the	North/South line	Feet from the	East/West line	County

Dedicated Acres	Joint or Infill	Consolidation Code	Order No.
320			

NO ALLOWABLE WILL BE ASSIGNED TO THIS COMPLETION UNTIL ALL INTERESTS HAVE BEEN CONSOLIDATED
OR A NON-STANDARD UNIT HAS BEEN APPROVED BY THE DIVISION

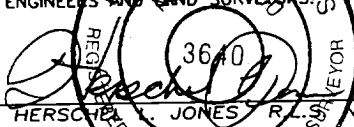
	<p>OPERATOR CERTIFICATION</p> <p>I hereby certify the the information contained herein is true and complete to the best of my knowledge and belief.</p> <p> Signature</p> <p>NM Young Printed Name</p> <p>District Manger Title</p> <p>07/31/2002 Date</p>
	<p>SURVEYOR CERTIFICATION</p> <p>I hereby certify that the well location shown on this plat was plotted from field notes of actual surveys made by me or under my supervision, and that the same is true and correct to the best of my belief.</p> <p>7/16/2002 Date Surveyed</p> <p> Signature of Professional Surveyor</p> <p> Professional Surveyor</p> <p>Certificate No. Herschel L. Jones RLS 3640 WEST LOVING "12" - 1 GENERAL SURVEYING COMPANY</p>

SECTION 12, TOWNSHIP 24 SOUTH, RANGE 27 EAST, NMPM, EDDY COUNTY, NEW MEXICO.



1000' 0 1000' 2000'
Scale 1" = 1000'

THE PREPARATION OF THIS PLAT AND THE PERFORMANCE OF THE SURVEY UPON WHICH IT IS BASED WERE DONE UNDER MY DIRECTION AND THE PLAT ACCURATELY DEPICTS THE RESULTS OF SAID SURVEY AND MEET THE REQUIREMENTS OF THE STANDARDS FOR LAND SURVEYS IN NEW MEXICO AS ADOPTED BY THE NEW MEXICO STATE BOARD OF REGISTRATION FOR PROFESSIONAL ENGINEERS AND LAND SURVEYORS.



GENERAL SURVEYING COMPANY, P.O. BOX 1928
LOVINGTON, NEW MEXICO 88260

MEWBOURNE OIL COMPANY

LEASE ROAD TO ACCESS THE MEWBOURNE WEST LOVING "12" STATE COM. #1 WELL LOCATED IN SECTION 12, TOWNSHIP 24 SOUTH, RANGE 27 EAST, NMPM, EDDY COUNTY, NEW MEXICO.

Survey Date: 7/16/2002	Sheet 1 of 1 Sheets
Drawn By: Ed Blevins	W.O. Number
Date: 7/16/02	Scale 1" = 1000' WEST LOVING

Mewbourne Oil Company
BOP Schematic for
12 1/4" Hole

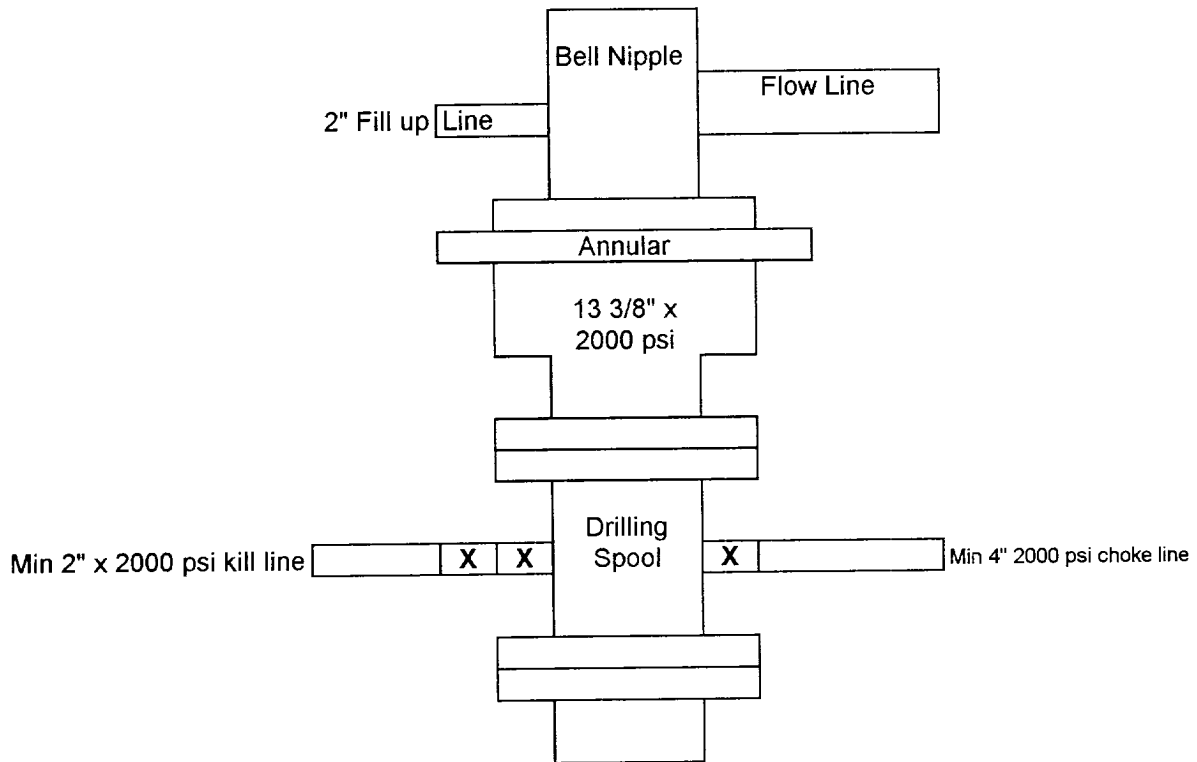


Exhibit #2

West Loving 12 State Com #1
660' FNL & 660' FWL
Sec.12 T-24S R-27E
Eddy, County New Mexico

Mewbourne Oil Company
BOP Scematic for
8 3/4" or 7 7/8" Hole

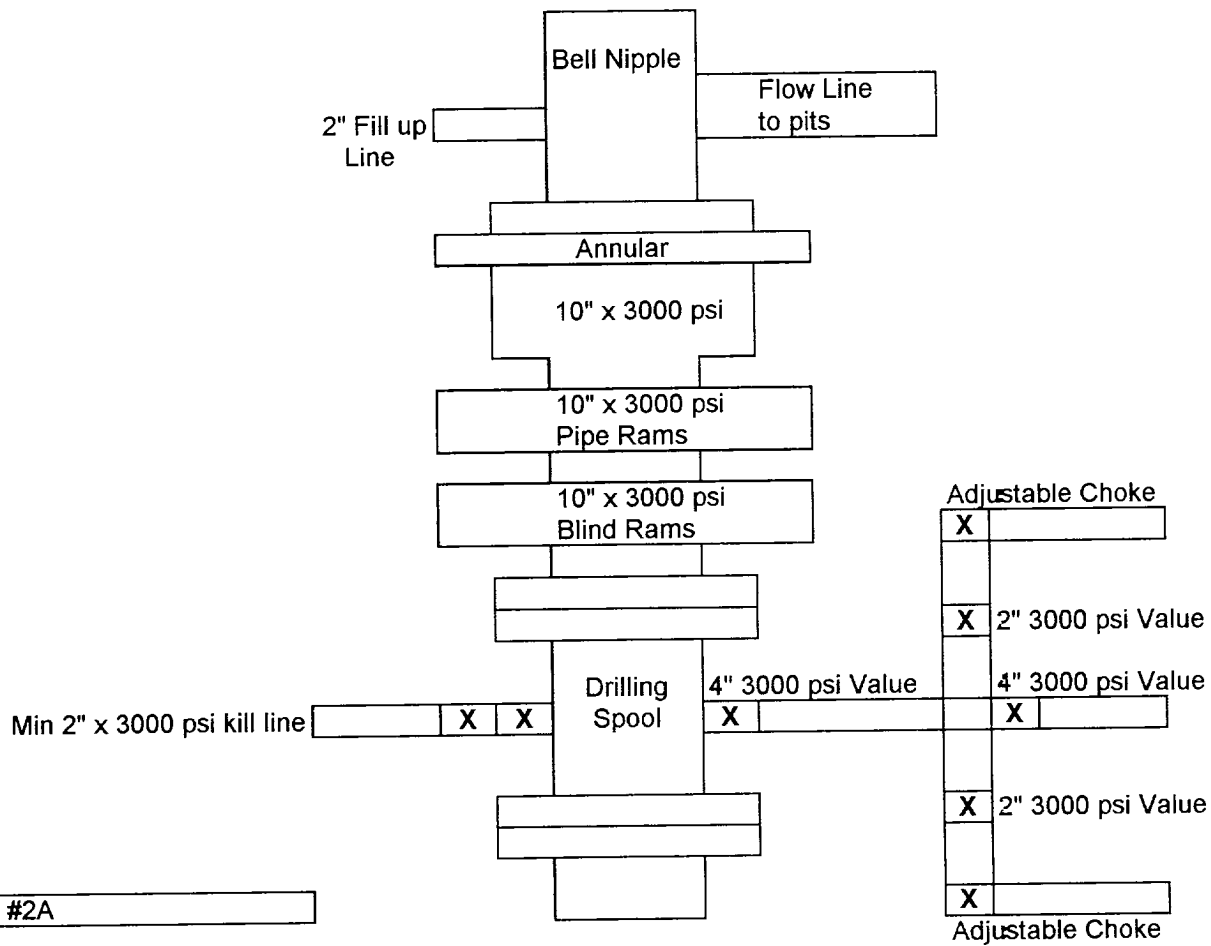


Exhibit #2A

West Loving 12 State Com #1
660' FNL & 660' FWL
Sec.12 T-24S R-27E
Eddy, County New Mexico