

1625 N. French Dr., Hobbs, NM 88240
District II
811 South First, Artesia, NM 88240
District III
1000 Rio Brazos Road, Aztec, NM 87410
District IV
2040 South Pacheco, Santa Fe, NM 87505

State of New Mexico
Energy Minerals and Natural Resources

Oil Conservation Division
2040 South Pacheco
Santa Fe, NM 87505

Form C-101
Revised March 17, 1999

Submit to appropriate District Office
State Lease - 6 Copies
Fee Lease - 5 Copies

☐ AMENDED REPORT

APPLICATION FOR PERMIT TO DRILL, RE-ENTER, DEEPEN, PLUGBACK, OR ADD A ZONE

Operator Name and Address BOGO PRODUCING COMPANY P.O. BOX 10340 MIDLAND, TEXAS 79702-7440		OGRID Number 17891
Property Code 9346		API Number 30-015-32440
Property Name STATE #2		Well No. 5

Surface Location

UL or lot no.	Section	Township	Range	Lot Idn	Feet from the	North/South line	Feet from the	East/West line	County
P	2	22S	31E		1300'	SOUTH	1300'	EAST	EDDY CO.

Proposed Bottom Hole Location

UL or lot no.	Section	Township	Range	Lot Idn	Feet from	County

Proposed Pool 1
LIVINGSTON RIDGE-DELAWARE (39360)

NOTIFY OCD SPUD & TIME
TO WITNESS CEMENTING OF
ALL CASING STRINGS

Work Type Code N	Well Type Code O	Cable/Rotary ROTARY	Lease Type Code S	Ground Level Elevation 3535'
Multiple NO	Proposed Depth 3500'	Formation BONE SPRING	Contractor UNKNOWN	Spud Date WHEN APPROVED

Proposed Casing and Cement Program

Hole Size	Casing Size	Casing weight/foot	Setting Depth	Sacks of Cement	Estimated TOC
25"	20"	NA	40'	Redi-mix	SURFACE
17½"	13 3/8"	48	850'	800 Sx.	Surface
11"	8 5/8"	32	4150'	1500 Sx.	Surface
7 7/8"	5½"	17 & 15.5	8500'	1650 Sx.	Surface

Describe the proposed program. If this application is to DEEPEN or PLUG BACK, give the data on the present productive zone and proposed new productive zone.

Describe the blowout prevention program, if any. Use additional sheets if necessary.

- Drill 25" hole to 40'. Set 40' of 20" conductor pipe and cement to surface with Redi-mix.
- Drill 17½" hole to 850'. Run and set 850' of 13 3/8" 48# H-40 ST&C casing. Cement with 800 Sx. of Class "C" cement + 2% CaCl₂ + ¼# Flocele/Sx. circulate cement to surface.
- Drill 11" hole to 4150'. Run and set 4150' of 8 5/8" 32# J-55 ST&C casing. Cement with 1500 Sx. of Class "C" cement + additives. circulate cement to surface.
- Drill 7 7/8" hole to 8500' using 8.4 #/Gal fresh water. Run and set 8500' of 5½" casing as follows: 2500' of 5½" 17# J-55 LT&C, 5000' of 5½" 15.5# J-55 LT&C, 1000' of 5½" 17# J-55 LT&C. Cement in 3 stages. 1st stage cement with 650 Sx. of Class "H" cement + additives, 2nd stage cement with 600 Sx. of Class "C" cement + additives, 3rd stage cement with 400 Sx. of Class "C" cement + additives circulate cement to surface. DV tools set at 6100' & 3700' ±.

I hereby certify that the information given above is true and complete to the best of my knowledge and belief. Signature: Joe T. Janica		OIL CONSERVATION DIVISION Approved by: ORIGINAL SIGNED BY TUN W. GUM DISTRICT II SUPERVISOR SEP 10 2002	
Printed name: Joe T. Janica		Title:	
Title: Agent		Approval Date: SEP 10 2002	
Date: 07/17/02		Expiration Date: SEP 10 2003	
Phone: 505-391-8503		Conditions of Approval:	
		Attached <input type="checkbox"/>	

DISTRICT IV
P.O. BOX 2088, SANTA FE, N.M. 87504-2088

OIL CONSERVATION DIVISION
P.O. Box 2088
Santa Fe, New Mexico 87504-2088

Form C-102
Revised February 10, 1984
Submit to Appropriate District Office
State Lease - 4 Copies
Fee Lease - 3 Copies

☐ AMENDED REPORT

API Number		Pool Code 39360	Pool Name LIVINGSTON RIDFE-DELAWARE
Property Code	Property Name STATE 2		Well Number 5
OGRID No. 17891	Operator Name POGO PRODUCING COMPANY		Elevation 3535'

UL or lot No.	Section	Township	Range	Lot Idn	Feet from the	North/South line	Feet from the	East/West line	County
P	2	22-S	31-E		1300	SOUTH	1300	EAST	EDDY

UL or lot No.	Section	Township	Range	Lot Idn	Feet from the	North/South line	Feet from the	East/West line	County
---------------	---------	----------	-------	---------	---------------	------------------	---------------	----------------	--------

Dedicated Acres	Joint or Infill	Consolidation Code	Order No.
40			

LOT 4

LOT 3

LOT 2

LOT 1

40.06 AC

39.93 AC

39.81 AC

39.65 AC

5

1

I hereby certify the the information
contained herein is true and complete to the
best of my knowledge and belief.

Signature Det Jenine

Joe T. Janica

Printed Name _____

Agent

Title

07/17/02

Date _____

I hereby certify that the well location shown on this plat was plotted from field notes of actual surveys made by me or under my supervision, and that the same is true and correct to the best of my belief.

JULY 11, 2002

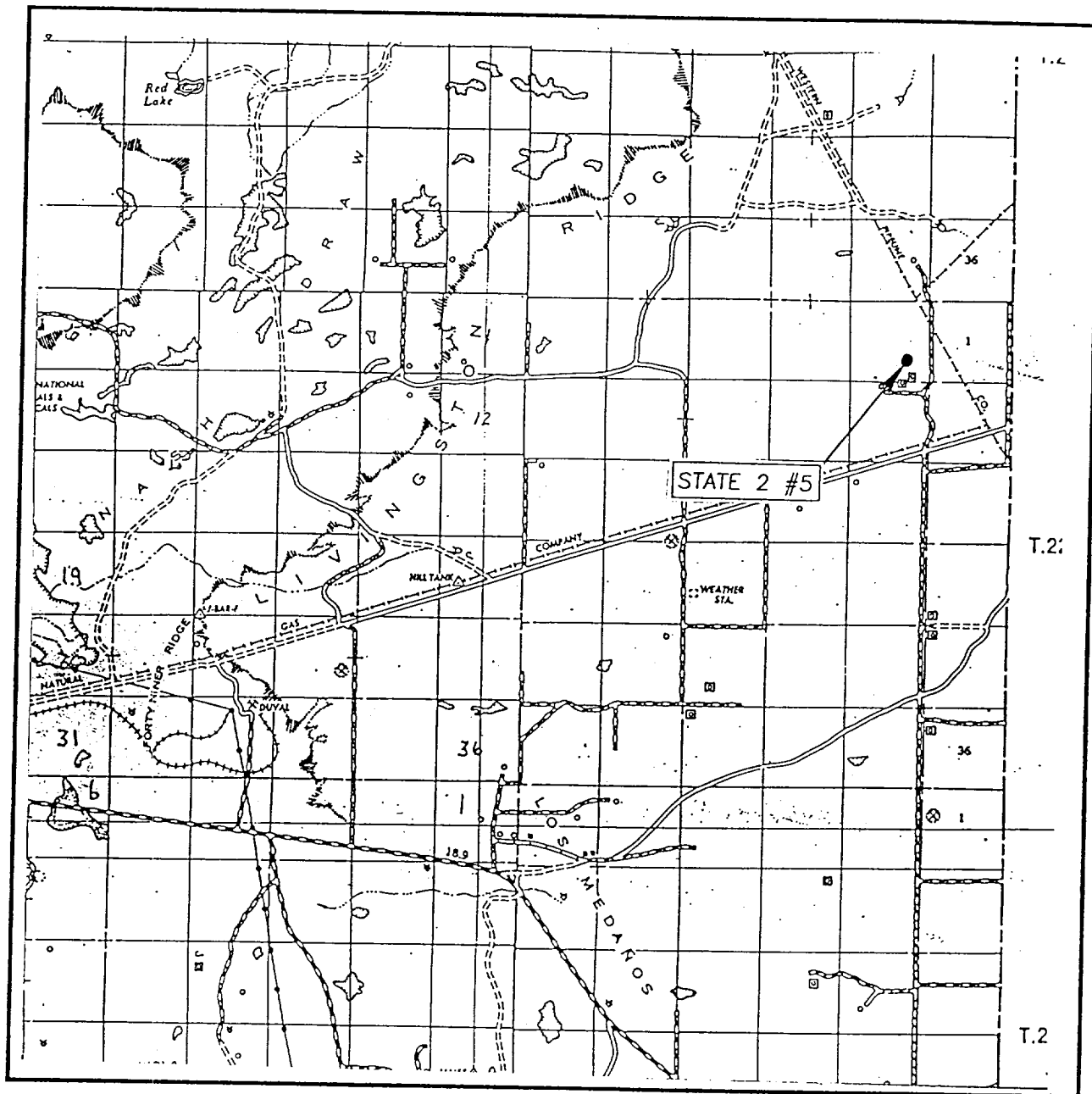
Date Surveyed 7/28/80 A.W.B.

Signature & Seal of
Professional Surveyor

NEW MEXICO
2/15/02
02.11.0518

Certificate No. RONALD J. EIDSON 3239
GARY EIDSON 12641

VICINITY MAP



SCALE: 1" = 2 MILES

SEC. 2 TWP. 22-S RGE. 31-E

SURVEY N.M.P.M.

COUNTY EDDY

DESCRIPTION 1300' FSL & 1300' FEL

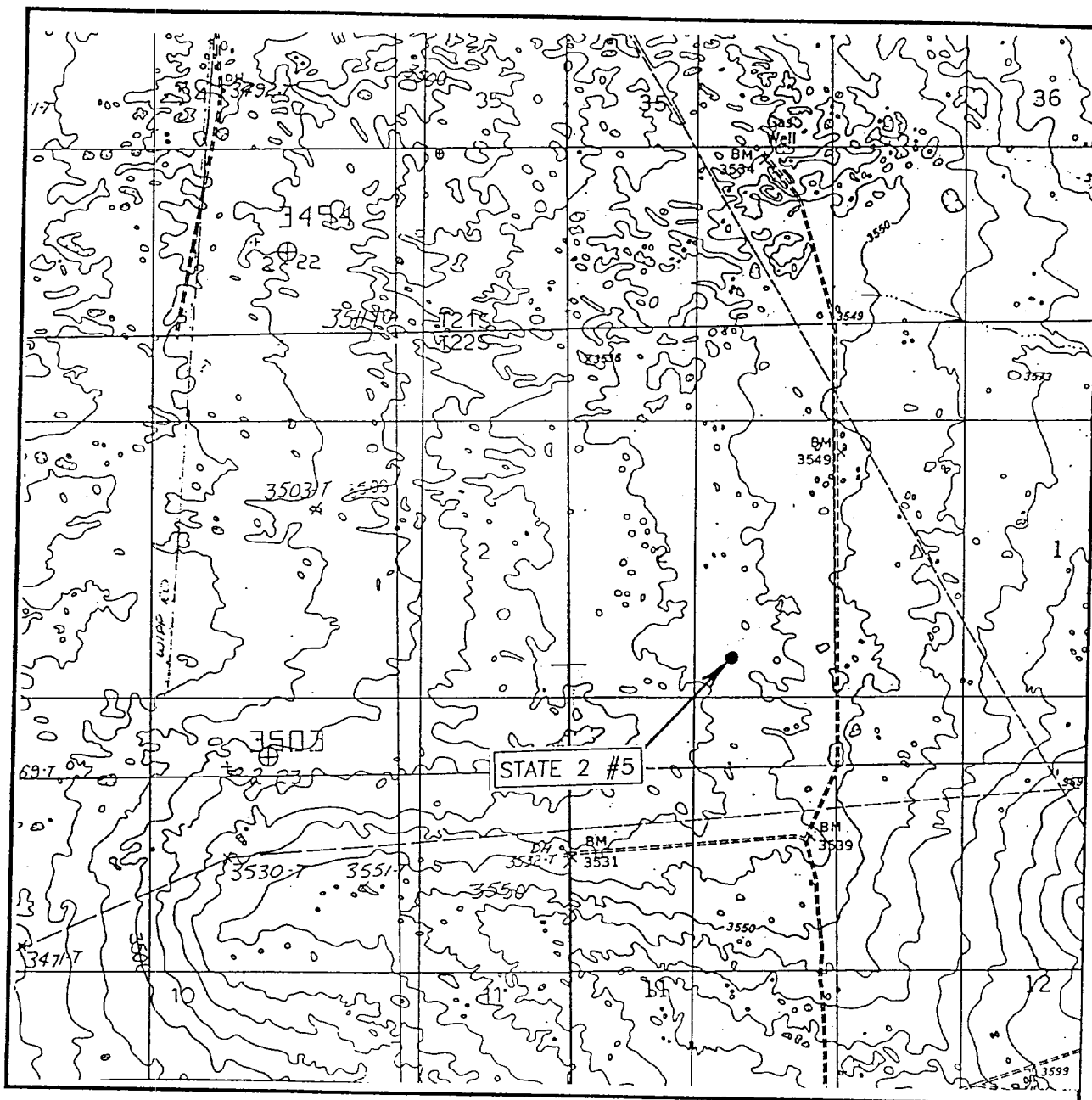
ELEVATION 3535'

OPERATOR POGO PRODUCING COMPANY

LEASE STATE 2

JOHN WEST SURVEYING
HOBBS, NEW MEXICO
(505) 393-3117

LOCATION VERIFICATION MAP



SCALE: 1" = 2000'

CONTOUR INTERVAL: 10'
THE DIVIDE, N.M.
LIVINGSTON RIDGE, N.M.

SEC. 2 TWP. 22-S RGE. 31-E

SURVEY N.M.P.M.

COUNTY EDDY

DESCRIPTION 1300' FSL & 1300' FEL

ELEVATION 3535'

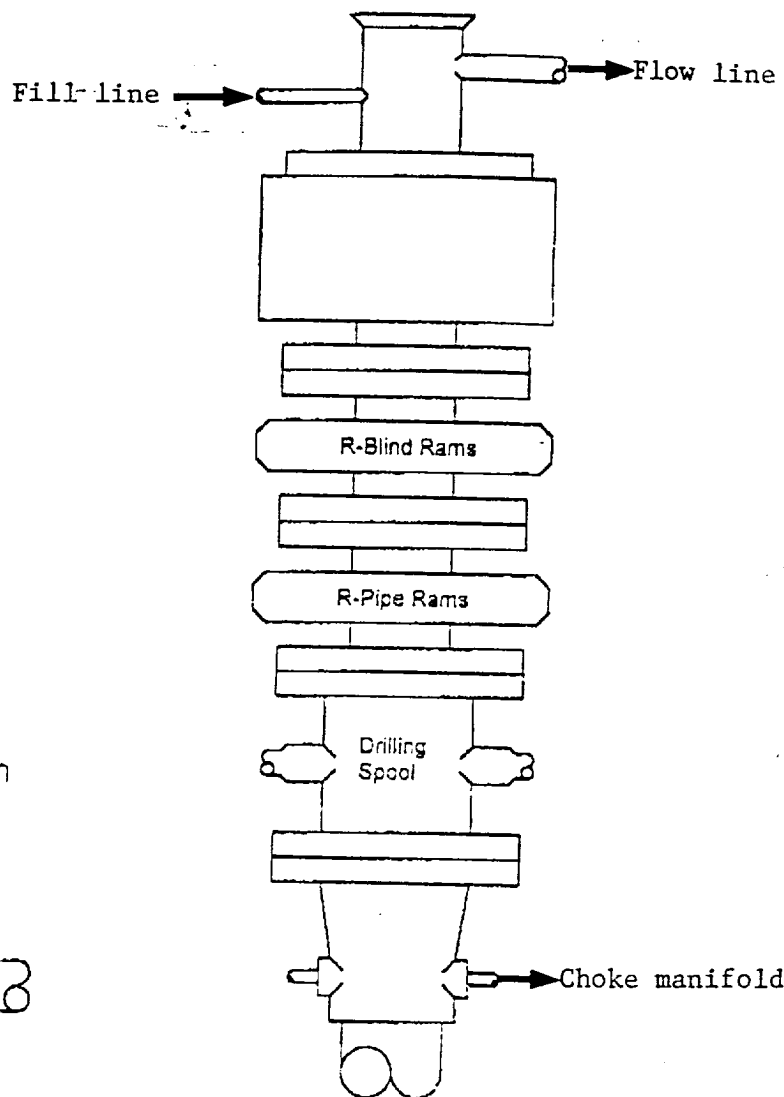
OPERATOR PCGO PRODUCING COMPANY

LEASE STATE 2

U.S.G.S. TOPOGRAPHIC MAP
THE DIVIDE, LIVINGSTON RIDGE, N.M.

JOHN WEST SURVEYING
HOBBS, NEW MEXICO
(505) 393-3117

BLOWOUT PREVENTER SYSTEM



Type 900 Series
3000 psi WP

Choke Manifold Assembly for 3M WP System

