

District I
1625 N. French Dr., Hobbs, NM 88240
District II
1301 W. Grand Avenue, Artesia, NM 88210
District III
1000 Rio Brazos Road, Aztec, NM 87410
District IV
1220 S. St. Francis Dr., Santa Fe, NM 87505

State of New Mexico
Energy Minerals and Natural Resources

Oil Conservation Division
1220 South St. Francis Dr.
Santa Fe, NM 87505
OCT 2002
RECEIVED
OCD - ARTESIA

Form C-1
Revised March 17, 1999

Submit to appropriate District Office
State Lease - 6 Copies
Fee Lease - 5 Copies

☐ AMENDED REPORT

APPLICATION FOR PERMIT TO DRILL, RE-ENTER, DEEPEN, PLUGBACK, OR ADD A ZONE

¹ Operator Name and Address BTA Oil Producers 104 S. Pecos Midland, TX 79701		² OGRID Number 003002
³ Property Code 2340		³ API Number 30 - 015-32493
⁵ Property Name Pardue "B", 8808 JV-P		⁶ Well No. 3

⁷ Surface Location

UL or lot no.	Section	Township	Range	Lot Idn	Feet from the	North/South line	Feet from the	East/West line	County
K	11	23S	28E		2310	S	1650	W	Eddy

⁸ Proposed Bottom Hole Location If Different From Surface

UL or lot no.	Section	Township	Range	Lot Idn	Feet from the	North/South line	Feet from the	East/West line	County
⁹ Proposed Pool 1 Antelope (Atoka)						¹⁰ Proposed Pool 2			

Leaving Brushy Canyon East

¹¹ Work Type Code N	¹² Well Type Code O	¹³ Cable/Rotary Rotary	¹⁴ Lease Type Code P	¹⁵ Ground Level Elevation 2988'
¹⁶ Multiple No	¹⁷ Proposed Depth 6200'	¹⁸ Formation Delaware	¹⁹ Contractor Patterson Drilling	²⁰ Spud Date ASAP

²¹ Proposed Casing and Cement Program

Hole Size	Casing Size	Casing weight/foot	Setting Depth	Sacks of Cement	Estimated TOC
12-1/4"	8-5/8"	24#	6200' @ 450'	400	Circ
7-7/8"	5-1/2"	15.5 & 17#	6200'	1200	Circ

²² Describe the proposed program. If this application is to DEEPEN or PLUG BACK, give the data on the present productive zone and proposed new productive zone. Describe the blowout prevention program, if any. Use additional sheets if necessary.

BOP - 3000 psi - Attached Schematic

The only producing well in this quarter-quarter section is the BTA 8808 JV-P Pardue B #1 which is 599' to the southeast.

²³ I hereby certify that the information given above is true and complete to the best of my knowledge and belief.

Signature:

Printed name: Pam Inskeep

Title: Regulatory Administrator

Date:
10/18/2002

Phone:
(915) 682-3753

OIL CONSERVATION DIVISION

Approved by:

ORIGINAL SIGNED BY TIM W. GUM
DISTRICT II SUPERVISOR

Title:

Approval Date:

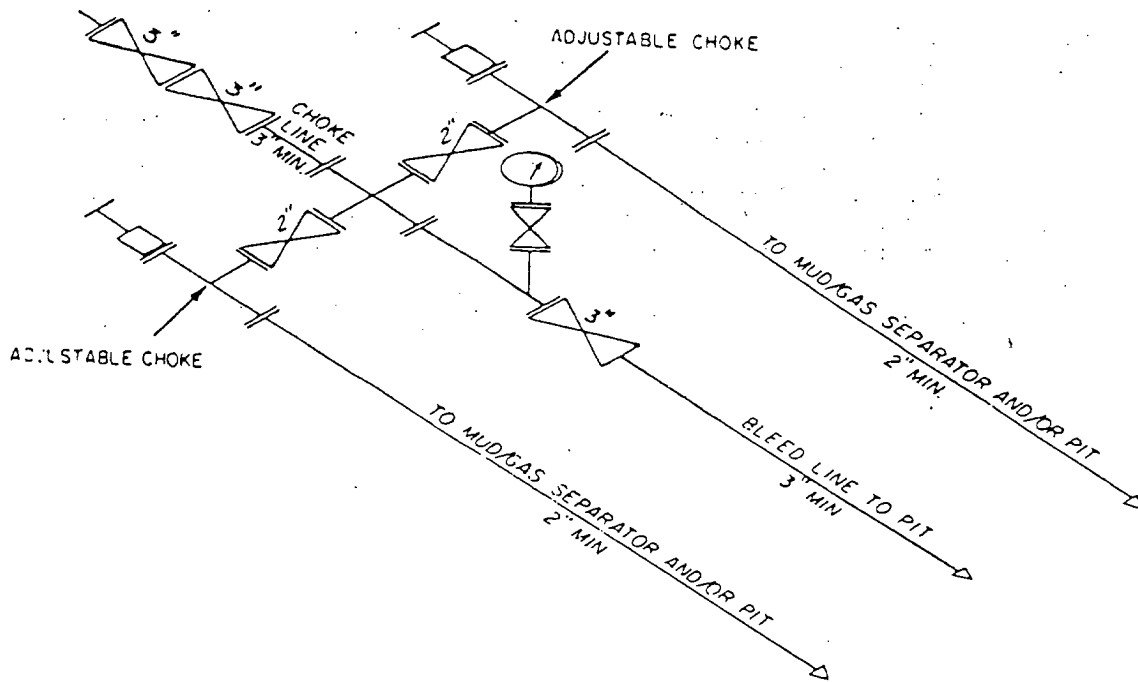
OCT 23 2002

Expiration Date:

Conditions of Approval:

Attached ☐

Surface casing set above
Salado.



3M CHOKE MANIFOLD EQUIPMENT — CONFIGURATION MAY VARY

BTA OIL PRODUCERS
 Pardue "B", 8808 JV-P, No. 3
 2310' FSL & 1650' FWL
 Sec. 11, T23S, R28E
 Eddy County, New Mexico

DISTRICT I
P.O. Box 1980, Hobbs, NM 88241-1980

DISTRICT II
P.O. Drawer DD, Artesia, NM 88211-0719

DISTRICT III
1000 Rio Brazos Rd., Aztec, NM 87410

DISTRICT IV
P.O. BOX 2088, SANTA FE, N.M. 87504-2088

State of New Mexico
Energy, Minerals and Natural Resources Department

Form C-102
Revised February 10, 1994
Submit to Appropriate District Office
State Lease - 4 Copies
Fee Lease - 3 Copies

OIL CONSERVATION DIVISION

P.O. Box 2088
Santa Fe, New Mexico 87504-2088

☐ AMENDED REPORT

WELL LOCATION AND ACREAGE DEDICATION PLAT

API Number	Pool Code 40370	Pool Name Loving East (Delaware)
Property Code	Property Name 8808 JV-P PARDUE "B"	Well Number 3
OGRID No. 003002	Operator Name BTA OIL PRODUCERS	Elevation 2988'

Surface Location

UL or lot No. K	Section 11	Township 23-S	Range 28-E	Lot Idn	Feet from the 2310'	North/South line SOUTH	Feet from the 1650	East/West line WEST	County EDDY
--------------------	---------------	------------------	---------------	---------	------------------------	---------------------------	-----------------------	------------------------	----------------

Bottom Hole Location If Different From Surface

UL or lot No.	Section	Township	Range	Lot Idn	Feet from the	North/South line	Feet from the	East/West line	County
Dedicated Acres 4c	Joint or Infill	Consolidation Code	Order No.						

NO ALLOWABLE WILL BE ASSIGNED TO THIS COMPLETION UNTIL ALL INTERESTS HAVE BEEN CONSOLIDATED
OR A NON-STANDARD UNIT HAS BEEN APPROVED BY THE DIVISION

	OPERATOR CERTIFICATION I hereby certify the the information contained herein is true and complete to the best of my knowledge and belief. Signature Pam Inskeep Printed Name Regulatory Administrator Title 10/18/2002 Date			
	SURVEYOR CERTIFICATION I hereby certify that the well location shown on this plat was plotted from field notes of actual surveys made by me or under my supervision, and that the same is true and correct to the best of my belief. OCTOBER 15, 2002 Date Surveyed Signature & Seal of Professional Surveyor Certificate No. RONALD J. EDSON 3239 12641			