

District I
1625 N. French Dr., Hobbs, NM 88240
District II
811 South First, Artesia, NM 88210
District III
1000 Rio Brazos Road, Aztec, NM 87410
District IV
2040 South Pacheco, Santa Fe, NM 87505

State of New Mexico
Energy Minerals and Natural Resources
Oil Conservation Division
2040 South Pacheco
Santa Fe, NM 87505

Form C-101
Revised March 17, 1999

Submit to appropriate District Office
State Lease - 6 Copies
Fee Lease - 5 Copies

☐ AMENDED REPORT

APPLICATION FOR PERMIT TO DRILL, RE-ENTER, DEEPEN, PLUGBACK, OR ADD A ZONE

¹ Operator Name and Address Gruy Petroleum Management Co. P. O. Box 140907 Irving TX 75014-0907		² OGRID Number 162683
		³ API Number 30 - 015 - 32549
³ Property Code 29013	⁵ Property Name White Baby Com	⁶ Well No. 4

⁷ Surface Location

UL or lot no.	Section	Township	Range	Lot Idn	Feet from the	North/South line	Feet from the	East/West line	County
D	16	24S	26E		990'	North	990'	West	Eddy

⁸ Proposed Bottom Hole Location If Different From Surface

UL or lot no.	Section	Township	Range	Lot Idn	Feet from the	North/South line	Feet from the	East/West line	County

⁹ Proposed Pool 1
White City; Penn, (Gas)

¹⁰ Proposed Pool 2

¹¹ Work Type Code N	¹² Well Type Code G	¹³ Cable/Rotary R	¹⁴ Lease Type Code S	¹⁵ Ground Level Elevation 3439'
¹⁶ Multiple No	¹⁷ Proposed Depth 13500'	¹⁸ Formation Morrow / Atoka	¹⁹ Contractor Unknown	²⁰ Spud Date When Approved

²¹ Proposed Casing and Cement Program

Hole Size	Casing Size	Casing weight/foot	Setting Depth	Sacks of Cement	Estimated TOC
17-1/2"	H-40 13-3/8"	48 #	425'	900 sx	Surface
12 1/4"	J-55 9-5/8"	36 #	3200'	1450 sx	Surface
7-7/8"	N-80/S-95 5-1/2"	17 #	13500'	1620 sx	TOC 2700'

²² Describe the proposed program. If this application is to DEEPEN or PLUG BACK, give the data on the present productive zone and proposed new productive zone. Describe the blowout prevention program, if any. Use additional sheets if necessary.

The proposed well will be drilled to a depth of 13,500' and completed as a White City; Penn Morrow / Atoka producer. From the base of the surface pipe through the running of 5 1/2" production casing, the well will be equipped with a 5000 BOP system.

²³ I hereby certify that the information given above is true and complete to the best of my knowledge and belief.

Signature: Zeno Farris

Printed name: Zeno Farris

Title: Manager Operations Administration

Date:
12-09-02

Phone:
972-401-3111

OIL CONSERVATION DIVISION

Approved by: **ORIGINAL SIGNED BY TIM W. GUM**
DISTRICT H SUPERVISOR

Title:

Approval Date: **DEC 11 2002** Expiration Date: **DEC 11 2003**

Conditions of Approval:

Attached ☐

DISTRICT I
P.O. Box 1980, Hobbs, NM 88241-1980

State of New Mexico
Energy, Minerals and Natural Resources Department

Form C-102
Revised February 10, 1994
Submit to Appropriate District Office
State Lease - 4 Copies
Fee Lease - 3 Copies

DISTRICT II
P.O. Drawer DD, Artesia, NM 88211-0719

DISTRICT III
1000 Rio Brazos Rd., Aztec, NM 87410

DISTRICT IV
P.O. BOX 2088, SANTA FE, N.M. 87504-2088

OIL CONSERVATION DIVISION

P.O. Box 2088
Santa Fe, New Mexico 87504-2088

☐ AMENDED REPORT

WELL LOCATION AND ACREAGE DEDICATION PLAT

API Number	Pool Code 87280	Pool Name White City; Penn. (Gas)
Property Code	Property Name WHITE BABY COM	Well Number 4
OGRID No. 162683	Operator Name GRUY PETROLEUM MANAGEMENT CO.	Elevation 3439'

Surface Location

UL or lot No. D	Section 16	Township 24-S	Range 26-E	Lot Idn	Feet from the 990'	North/South line NORTH	Feet from the 990'	East/West line WEST	County EDDY
--------------------	---------------	------------------	---------------	---------	-----------------------	---------------------------	-----------------------	------------------------	----------------

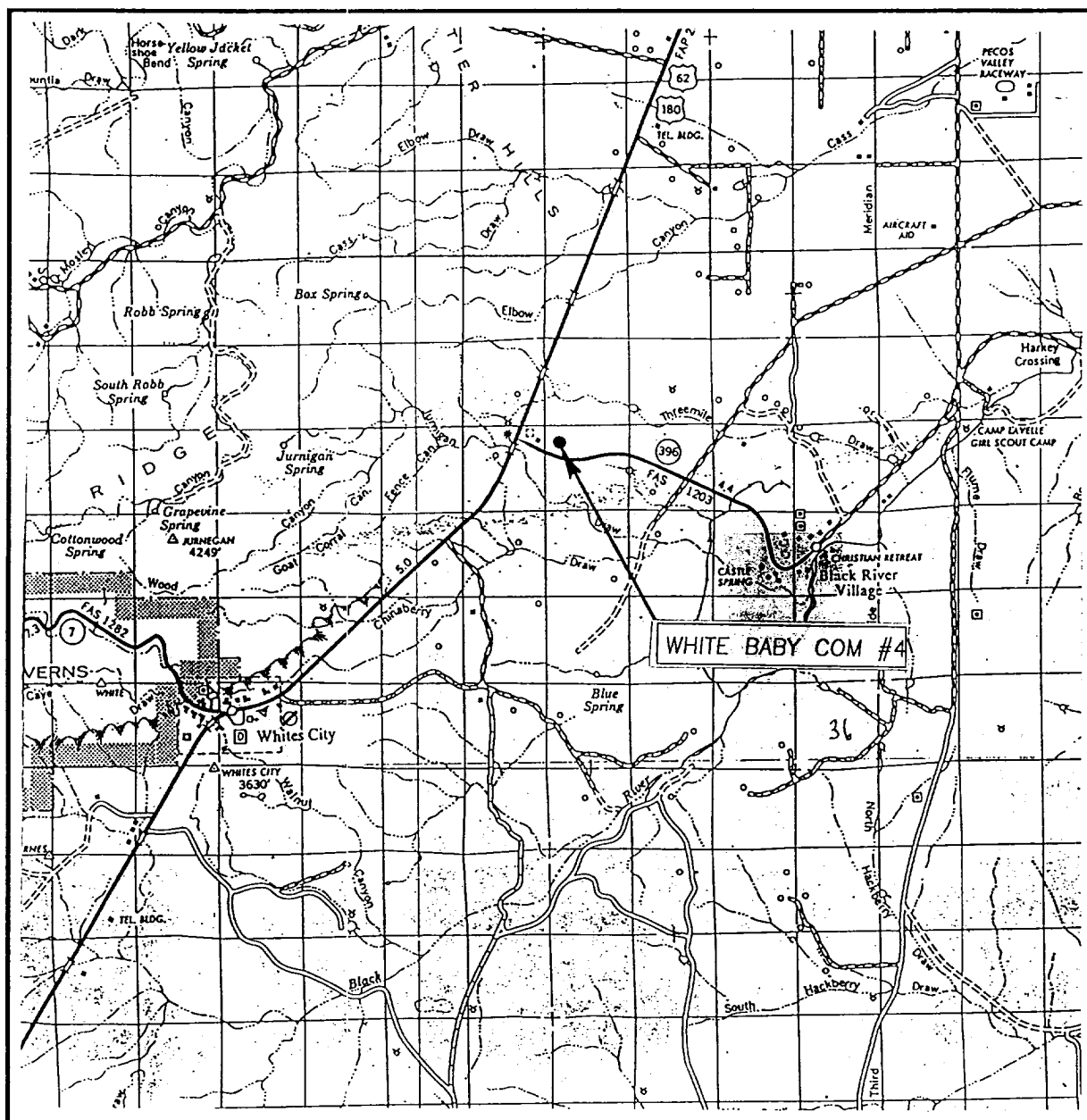
Bottom Hole Location If Different From Surface

UL or lot No.	Section	Township	Range	Lot Idn	Feet from the	North/South line	Feet from the	East/West line	County
Dedicated Acres 640	Joint or Infill Y	Consolidation Code C	Order No.						

NO ALLOWABLE WILL BE ASSIGNED TO THIS COMPLETION UNTIL ALL INTERESTS HAVE BEEN CONSOLIDATED
OR A NON-STANDARD UNIT HAS BEEN APPROVED BY THE DIVISION

	OPERATOR CERTIFICATION I hereby certify the the information contained herein is true and complete to the best of my knowledge and belief. Signature Zeno Farris Printed Name Manager, Operations Admin. Title December 9, 2002 Date
	SURVEYOR CERTIFICATION I hereby certify that the well location shown on this plat was plotted from field notes of actual surveys made by me or under my supervision, and that the same is true and correct to the best of my belief. OCTOBER 31, 2002 Date Surveyed Signature & Seal of Professional Surveyor Certificate No. RONALD J. EDSON 3239 GARY EDSON 12641

VICINITY MAP



SCALE: 1" = 2 MILES

SEC. 16 TWP. 24-S RGE. 26-E

SURVEY N.M.P.M.

COUNTY EDDY

DESCRIPTION 990' FNL & 990' FWL

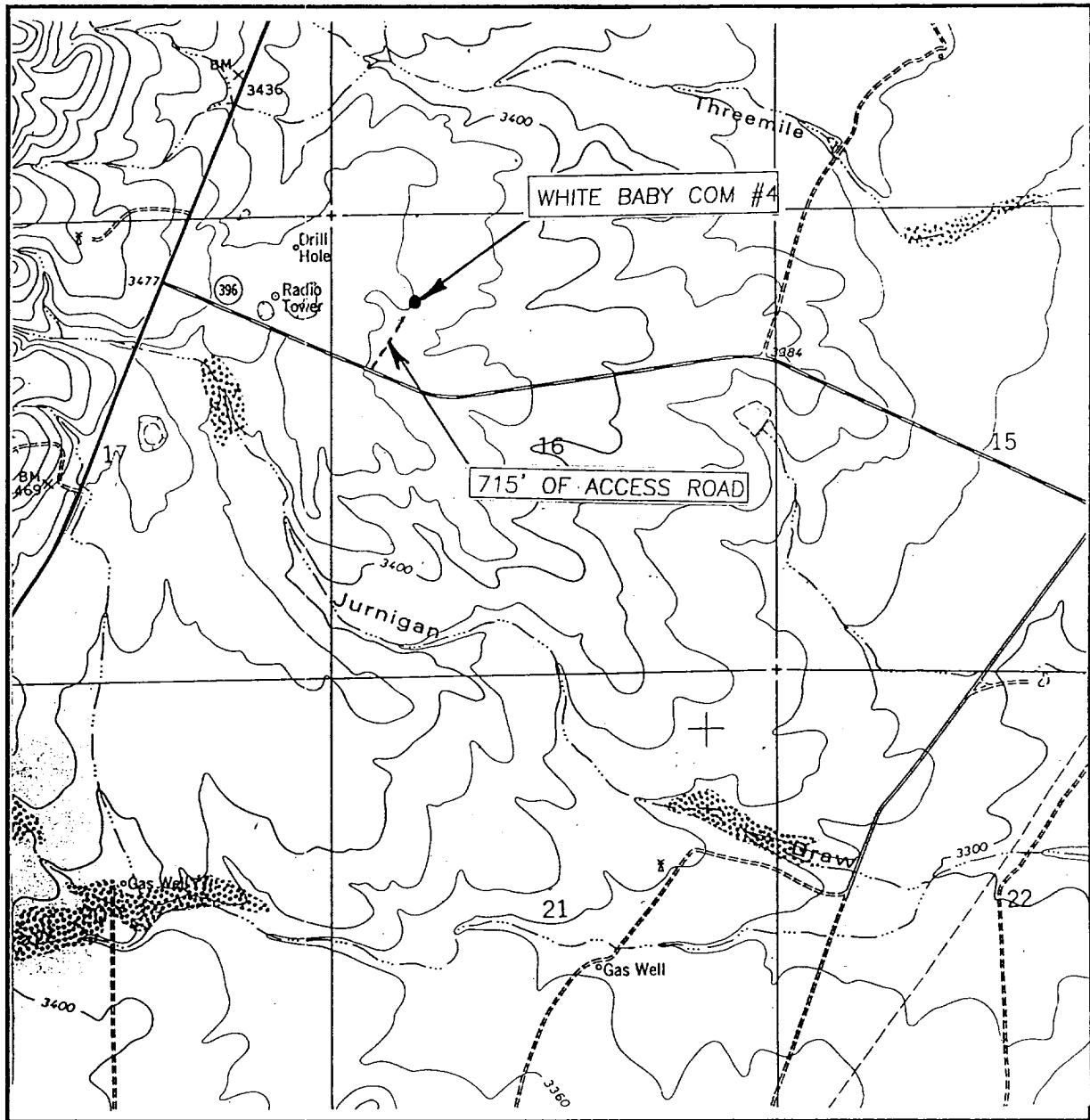
ELEVATION 3439'

OPERATOR GRUY PETROLEUM MANAGEMENT CO.

LEASE WHITE BABY COM

JOHN WEST SURVEYING
HOBBS, NEW MEXICO
(505) 393-3117

LOCATION VERIFICATION MAP



SCALE: 1" = 2000'

CONTOUR INTERVAL: 20'
BLACK RIVER VILLAGE, N.M.

SEC. 16 TWP. 24-S RGE. 26-E

SURVEY N.M.P.M.

COUNTY EDDY

DESCRIPTION 990' FNL & 990' FWL

ELEVATION 3439'

OPERATOR GRUY PETROLEUM MANAGEMENT CO.

LEASE WHITE BABY COM

U.S.G.S. TOPOGRAPHIC MAP

BLACK RIVER VILLAGE, N.M.

JOHN WEST SURVEYING
HOBBS, NEW MEXICO
(505) 393-3117