

UNITED STATES
DEPARTMENT OF THE INTERIOR
BUREAU OF LAND MANAGEMENT

RECEIVED BY
SUBMITTER
LOCATE
(Other instructions on
reverse side)
AUG 17 1984

c/sf
Form approved.
Budget Bureau No. 1004-0136
Expires August 31, 1985

APPLICATION FOR PERMIT TO DRILL, DEEPEN, OR PLUG BACK

1a. TYPE OF WORK

DRILL ☐ RE-ENTER & DEEPEN ☒ PLUG BACK ☐

b. TYPE OF WELL

OIL WELL ☒ GAS WELL ☐ OTHER ☐ SINGLE ZONE ☒ MULTIPLE ZONE ☐

2. NAME OF OPERATOR

HANSON OPERATING COMPANY, INC. (Grant Smith)
(505-622-7330)

3. ADDRESS OF OPERATOR

P. O. Box 1515, Roswell, New Mexico 88202-1515

4. LOCATION OF WELL (Report location clearly and in accordance with any State requirements.)

At surface
330' FSL & 2310' FEL of Section

At proposed prod. zone
same

(Unit 0)
(SW $\frac{1}{4}$ SE $\frac{1}{4}$)

14. DISTANCE IN MILES AND DIRECTION FROM NEAREST TOWN OR POST OFFICE*

30 air miles west-southwest of Jal, New Mexico

15. DISTANCE FROM PROPOSED*

LOCATION TO NEAREST
PROPERTY OR LEASE LINE, FT.
(Also to nearest drg. unit line, if any) 330'

16. NO. OF ACRES IN LEASE

900.80

17. NO. OF ACRES ASSIGNED
TO THIS WELL

40

18. DISTANCE FROM PROPOSED LOCATION*

TO NEAREST WELL, DRILLING, COMPLETED,
OR APPLIED FOR, ON THIS LEASE, FT. 1320'

19. PROPOSED DEPTH

7000±

20. ROTARY OR CABLE TOOLS

Rotary

21. ELEVATIONS (Show whether DF, RT, GR, etc.)

3145' G.L.

22. APPROX. DATE WORK WILL START*

October 1, 1984

23.

PROPOSED CASING AND CEMENTING PROGRAM

SIZE OF HOLE	SIZE OF CASING	WEIGHT PER FOOT	SETTING DEPTH	QUANTITY OF CEMENT
10 3/4"	*8 5/8"	28#	884'	340 sacks circulated to surface
7 7/8"	5 1/2"	15.5#	7000'	500 sacks

* This casing was set and cemented when the well was originally drilled by The IbeX Company as Well #8 Hanson during the period 9-23-55 to 10-10-55 to a total depth of 4233' and subsequently plugged and abandoned.

Plans are to drill out plugs and deepen to ±7000' and test the Cherry Canyon and Brushy Canyon zones. If production is indicated, 5½" casing will be run and cemented for completion. Pay zones will be selectively perforated and stimulated as needed for optimum production.

Attached are: 1. Well Location & Acreage Dedication Plat
2. Supplemental Drilling data
3. Surface Use Plan

Post ID-1
8-24-84
Re-entry

IN ABOVE SPACE DESCRIBE PROPOSED PROGRAM: If proposal is to deepen or plug back, give data on present productive zone and proposed new productive zone. If proposal is to drill or deepen directionally, give pertinent data on subsurface locations and measured and true vertical depths. Give blowout preventer program, if any.

24.

SIGNED

James A. Knaut
James A. Knaut

TITLE

Agent

DATE

August 3, 1984

(This space for Federal or State office use)

PERMIT NO.

APPROVAL DATE

APPROVED BY

Don Wood
Don Wood

TITLE

CARLSBAD RES.

DATE

8-16-84

APPROVAL SUBJECT TO
GENERAL REQUIREMENTS AND
SPECIAL STIPULATIONS
ATTACHED

*See Instructions On Reverse Side

NEW MEXICO OIL CONSERVATION COMMISSION
WELL LOCATION AND ACREAGE DEDICATION PLAT

Form C-102
 Supersedes C-128
 Effective 1-1-65

All distances must be from the outer boundaries of the Section.

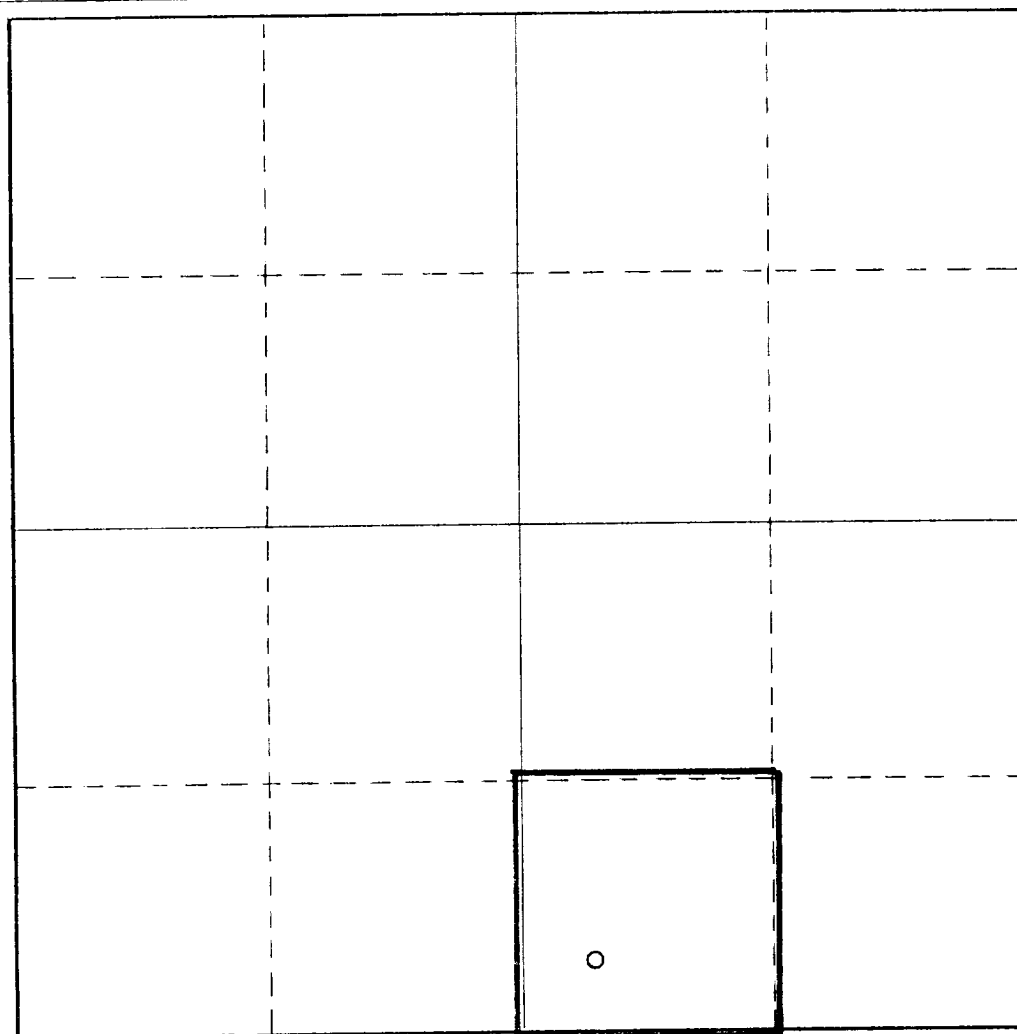
Operator HANSON OPERATING COMPANY, INC.			Lease HANSON FEDERAL		Well No. 8
Unit Letter 0	Section 25	Township 26S	Range 31E	County Eddy	
Actual Well Location of Well: 330 feet from the South line and 2310 feet from the East line					
Ground Level Elev. 3145'	Producing Formation Delaware Mountain Group		Pool Wildcat		Dedicated Acreage: 40 Acres

1. Outline the acreage dedicated to the subject well by colored pencil or hachure marks on the plat below.
2. If more than one lease is dedicated to the well, outline each and identify the ownership thereof (both as to working interest and royalty).
3. If more than one lease of different ownership is dedicated to the well, have the interests of all owners been consolidated by communitization, unitization, force-pooling, etc?

☐ Yes ☐ No If answer is "yes," type of consolidation _____

If answer is "no," list the owners and tract descriptions which have actually been consolidated. (Use reverse side of this form if necessary.) _____

No allowable will be assigned to the well until all interests have been consolidated (by communitization, unitization, forced-pooling, or otherwise) or until a non-standard unit, eliminating such interests, has been approved by the Commission.



CERTIFICATION

I hereby certify that the information contained herein is true and complete to the best of my knowledge and belief.

James A. Knauf
 Name
James A. Knauf

Position
Agent

Company
HANSON OPERATING CO., INC.

Date
July 31, 1984

I hereby certify that the well location shown on this plat was plotted from field notes of actual surveys made by me or under my supervision, and that the same is true and correct to the best of my knowledge and belief.

SEE ORIGINAL PLAT

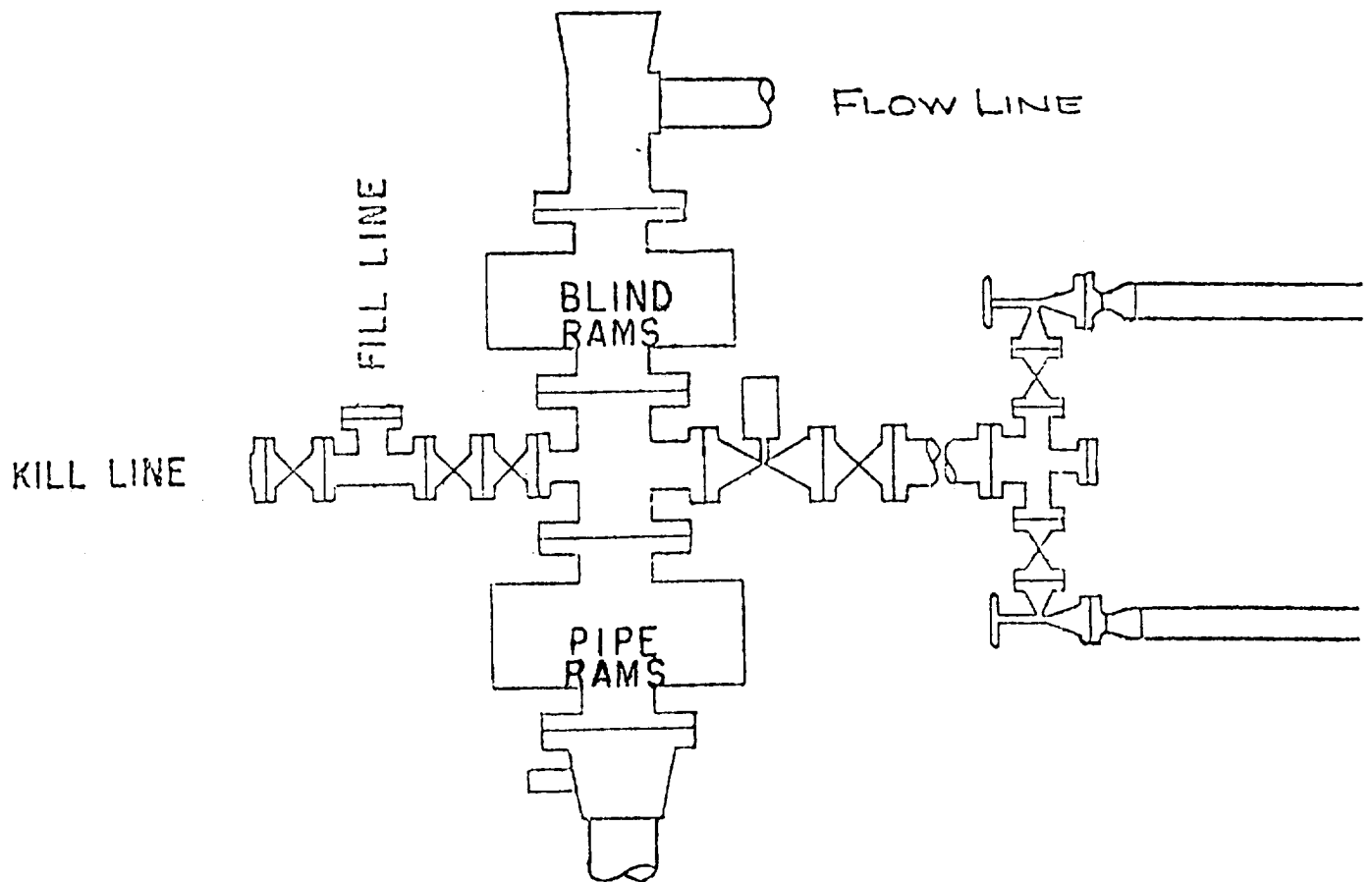
Date Surveyed

Registered Professional Engineer
 and/or Land Surveyor

Certificate No.

0 330 660 990 1320 1650 1980 2310 2640 2000 1500 1000 500 0

WEK DRILLING CO., INC. - Rig 1 & 3
BLOWOUT PREVENTER SPECIFICATION



BLOWOUT PREVENTER ARRANGEMENT
Hanson Operating Company, Inc.
Well #8 Hanson Federal
330' FSL & 2310' FEL Sec. 25-26S-31E

SUPPLEMENTAL DRILLING DATA

HANSON OPERATING COMPANY, INC.
WELL #8 HANSON FEDERAL
SW $\frac{1}{4}$ SE $\frac{1}{4}$ SEC. 25-26S-31E
EDDY COUNTY, NEW MEXICO

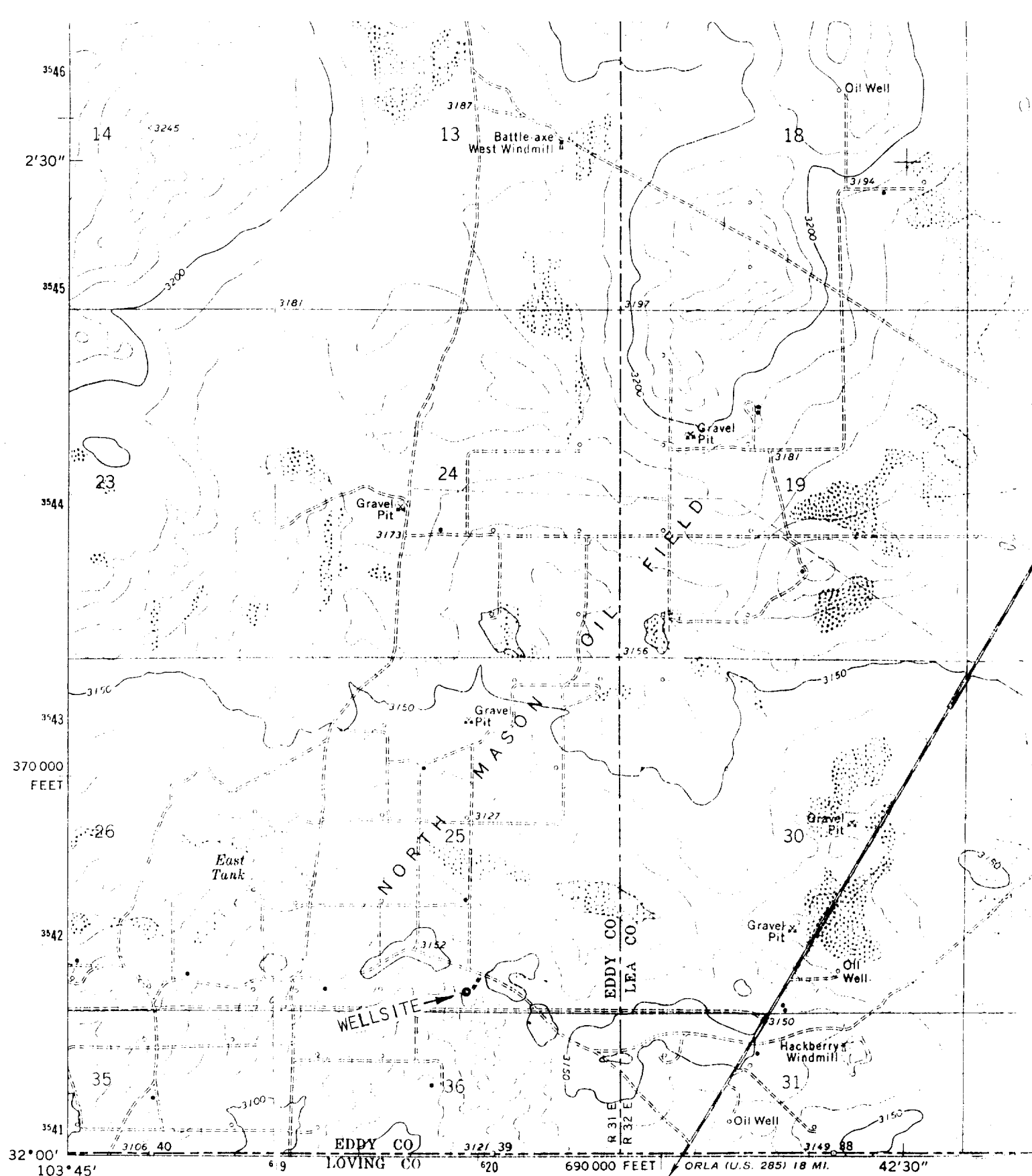
1. SURFACE FORMATION: Quaternary.
2. ESTIMATED TOPS OF GEOLOGIC MARKERS:

Anhydrite	800'	Delaware Sand	4172'
Upper Salt	1100'	Cherry Canyon	5100'
Base Lower Salt	3926'	Brushy Canyon	6400'
Delaware Lime	4135'		
3. POSSIBLE HYDROCARBON BEARING ZONES:

Bell Canyon:	Oil
Cherry Canyon:	Oil
Brushy Canyon:	Oil
4. CASING DESIGN:

<u>Size</u>	<u>Interval</u>	<u>Weight</u>	<u>Grade</u>	<u>Joint</u>
8 5/8"	0 - 884'	28.0#	J-55	STC
5 1/2"	0 - 7000'	15.5#	J-55	STC
5. PRESSURE CONTROL EQUIPMENT: Two Ram-Type Preventors. A sketch of BOP stack is attached.
6. CIRCULATING MEDIUM:

4233 - 7000' Water system conditioned as necessary for control of viscosity and water loss.
7. AUXILIARY EQUIPMENT: Drill string safety valve.
8. TESTING, LOGGING AND CORING PROGRAMS: No coring or DST's are planned. Electric logs will include a Compensated Neutron Log with Gamma Ray.
9. ABNORMAL PRESSURES, TEMPERATURES OR GAS: None anticipated.
10. ANTICIPATED STARTING DATE: It is planned that operations will commence about October 1, 1984. Duration of drilling, testing, and completion operations should be 2 to 6 weeks.



Mapped, edited, and published by the Geological Survey

Control by USGS and NOS/NCAA

Topography by photogrammetric methods from aerial photographs taken 1971. Field checked 1973

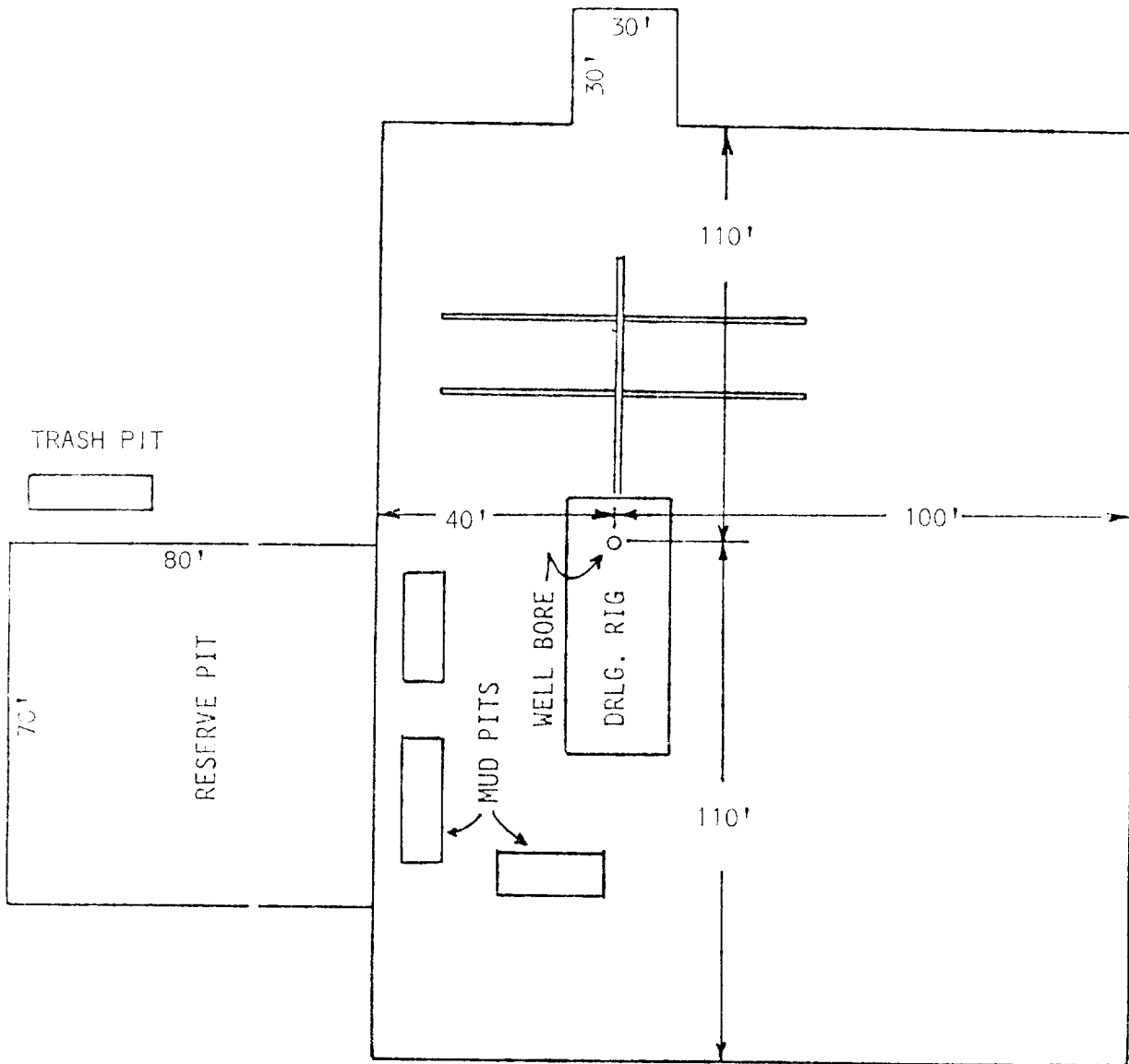
Projection and 10,000-foot grid ticks: New Mexico coordinate system, east zone (transverse Mercator) 1000-metre Universal Transverse Mercator grid ticks, zone 13, shown in blue. 1927 North American datum

Fine red dashed lines indicate selected fence lines

SUP Exhibit "B"
TOPOGRAPHIC MAP

Hanson Operating Company, Inc.
Well #8 Hanson Federal
330' FSL & 2310' FEL Sec. 25-26S-31E

UTM GRID AND 1973 MAGNETIC NORTH
DECLINATION AT CENTER OF SHEET



SUP Exhibit "D"
SKETCH OF WELL PAD
Hanson Operating Company, Inc.
Well #8 Hanson Federal
330' FSL & 2310' FEL Sec. 25-26S-31E