

NE MEXICO OIL CONSERVATION COMMISSION  
WELL LOCATION AND ACREAGE DEDICATION PLAT

RECEIVED

Form C-102  
Supersedes C-128  
Effective 1-1-65

JUN 29 1967

All distances must be from the outer boundaries of the Section.

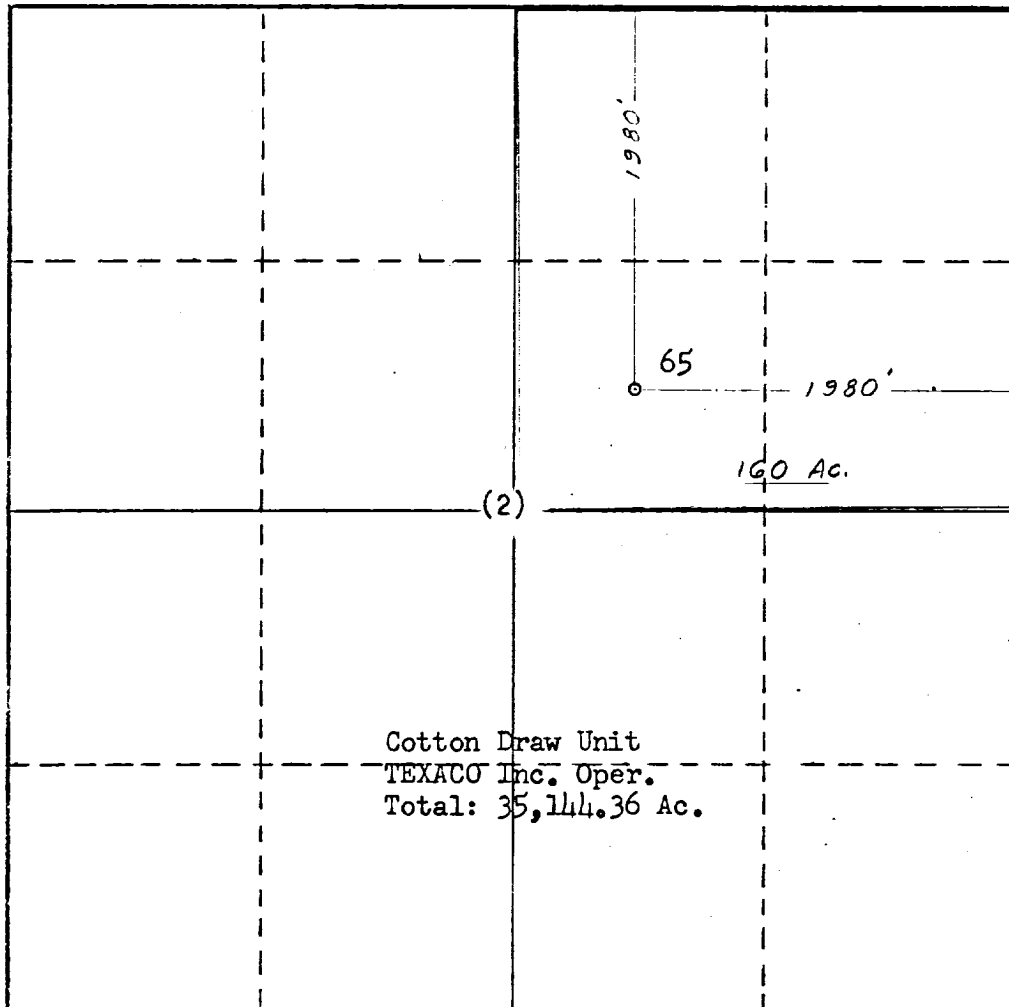
Operator TEXACO Inc. ✓		Lease Cotton Draw Unit		D. C. C. ARTESIA, OFFICE		Well No. 65	
Unit Letter C	Section 2	Township 25 South	Range 31 East	County Eddy			
Actual Footage Location of Well: 1980 feet from the North line and 1980 feet from the East line Sec. 2							
Ground Level Elev. Not Available	Producing Formation Wolfcamp		Pool Undesignated J/C		Dedicated Acreage: 160 Acres		

1. Outline the acreage dedicated to the subject well by colored pencil or hatchure marks on the plat below.
2. If more than one lease is dedicated to the well, outline each and identify the ownership thereof (both as to working interest and royalty).
3. If more than one lease of different ownership is dedicated to the well, have the interests of all owners been consolidated by communitization, unitization, force-pooling, etc?

☐ Yes ☐ No If answer is "yes," type of consolidation Unitization & Development Agreement

If answer is "no," list the owners and tract descriptions which have actually been consolidated. (Use reverse side of this form if necessary.)

No allowable will be assigned to the well until all interests have been consolidated (by communitization, unitization, forced-pooling, or otherwise) or until a non-standard unit, eliminating such interests, has been approved by the Commission.



CERTIFICATION

I hereby certify that the information contained herein is true and complete to the best of my knowledge and belief.

Name  
J. J. Velten  
Position  
Division Civil Engineer  
Company  
TEXACO Inc.

Date  
6/27/67

I hereby certify that the well location shown on this plat was plotted from field notes of actual surveys made by me or under my supervision, and that the same is true and correct to the best of my knowledge and belief.

Date Surveyed  
6/15/66

Registered Professional Engineer  
and/or Land Surveyor

J. J. Velten

Certificate No.  
8174

