

**N MEXICO OIL CONSERVATION COMMISSION
WELL LOCATION AND ACREAGE DEDICATION PLAT**

Form C-102
Supersedes C-128
Effective 1-1-65

All distances must be from the outer boundaries of the Section.

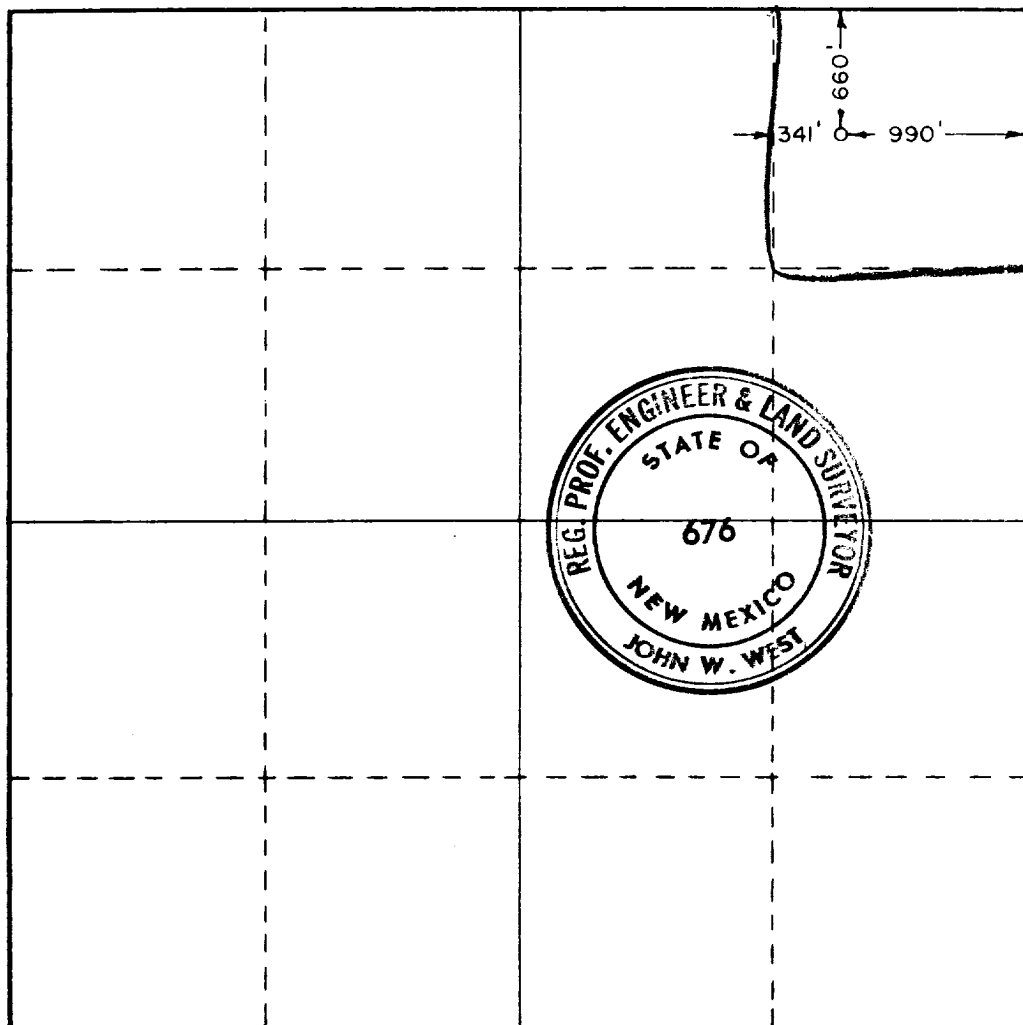
Operator INEXCO OIL COMPANY			Lease WHITE CITY FEDERAL		Well No. 1
Unit Letter A	Section 23	Township 25 SOUTH	Range 25 EAST	County EDDY	
Actual Footage Location of Well: <div style="display: flex; justify-content: space-between; align-items: center;"> 660 feet from the NORTH line and 990 feet from the EAST line </div>					
Ground Level Elev. 3412	Producing Formation Dev	Pool wildcat	Dedicated Acreage: 40 Acres		

1. Outline the acreage dedicated to the subject well by colored pencil or hachure marks on the plat below.
2. If more than one lease is dedicated to the well, outline each and identify the ownership thereof (both as to working interest and royalty).
3. If more than one lease of different ownership is dedicated to the well, have the interests of all owners been consolidated by communitization, unitization, force-pooling, etc?

☐ Yes ☐ No If answer is "yes," type of consolidation _____

If answer is "no," list the owners and tract descriptions which have actually been consolidated. (Use reverse side of this form if necessary.) _____

No allowable will be assigned to the well until all interests have been consolidated (by communitization, unitization, forced-pooling, or otherwise) or until a non-standard unit, eliminating such interests, has been approved by the Commission.



CERTIFICATION

I hereby certify that the information contained herein is true and complete to the best of my knowledge and belief.

Bernard J. Mahony
Name

Bernard J. Mahony

Position

Manager, Prod. & Drilg.

Company

INEXCO OIL COMPANY

Date

11-2-70

RECEIVED
NOV-3-1970
I hereby certify that the well location shown on this plat was located from field notes of a survey made by me or under my supervision. The same is the true and correct location of my knowledge and belief.

Date Surveyed

10-30-1970

Registered Professional Engineer and/or Land Surveyor

John W. West
Certificate No.

676

0 320 640 960 1280 1600 1920 2240 2560 2880 3200 3520 3840 4160 4480 4800 5120 5440 5760 6080 6400 6720 7040 7360 7680 8000