

N MEXICO OIL CONSERVATION COMMISS.
WELL LOCATION AND ACREAGE DEDICATION PLAT

Form C-132
Supersedes C-128
Effective 1-1-65

All distances must be from the outer boundaries of the Section.

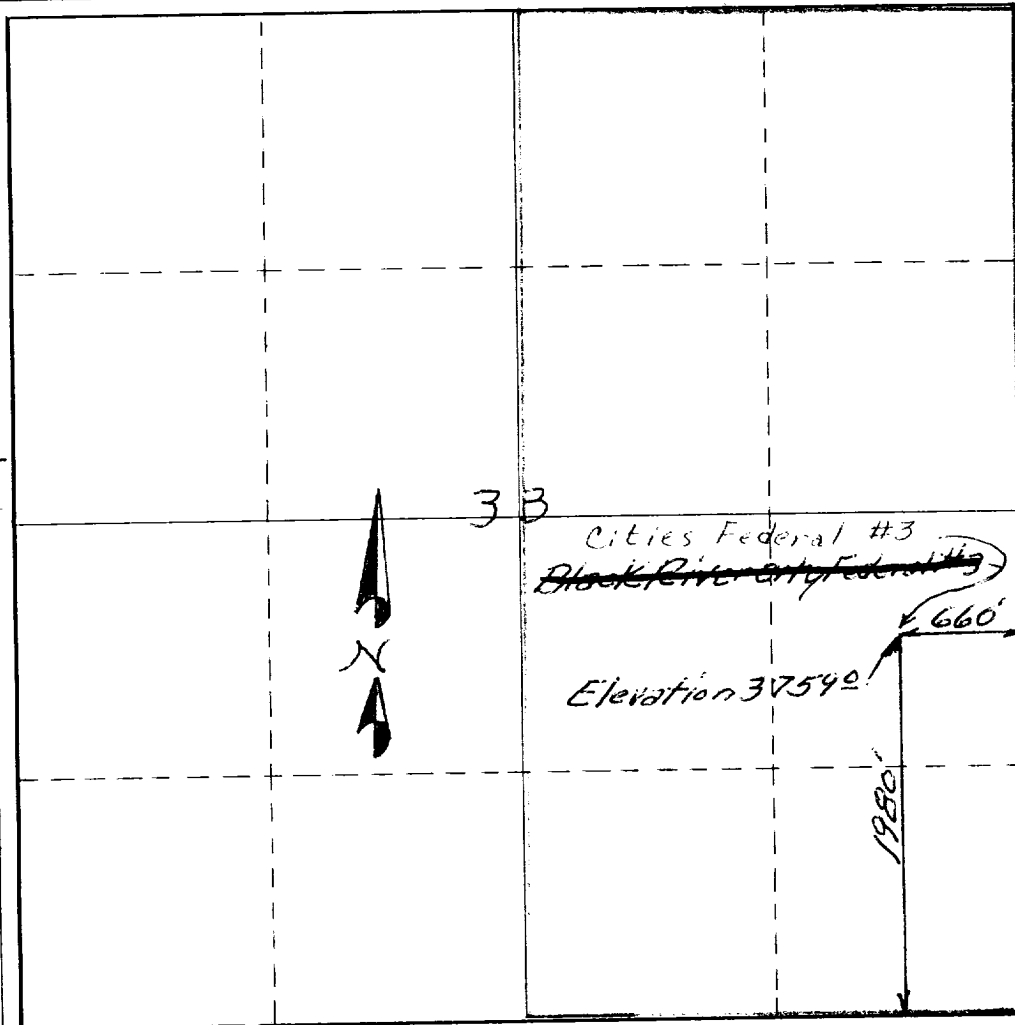
Operator <i>Black River Corporation</i>		Lease <i>NM 047225</i>		Well No. <i>Black River</i> <i>Cities Federal #3</i>	
Unit Letter <i>1</i>	Section <i>33</i>	Township <i>T25S</i>	Range <i>R24E</i>	County <i>EDDY</i>	
Actual Footage Location of Well: <i>1980</i> feet from the <i>South</i> line and <i>660</i> feet from the <i>East</i> line					
Ground Level Elev. <i>3759.0</i>	Producing Formation <i>Morrow</i>	Pool <i>New (Unimproved)</i>	Dedicated Acreage: <i>320</i> Acres		

- Outline the acreage dedicated to the subject well by colored pencil or hachure marks on the plat below.
- If more than one lease is dedicated to the well, outline each and identify the ownership thereof (both as to working interest and royalty). *N/A*
- If more than one lease of different ownership is dedicated to the well, have the interests of all owners been consolidated by communitization, unitization, force-pooling, etc? *N/A*

☐ Yes ☐ No If answer is "yes," type of consolidation _____

If answer is "no," list the owners and tract descriptions which have actually been consolidated. (Use reverse side of this form if necessary.) _____

No allowable will be assigned to the well until all interests have been consolidated (by communitization, unitization, forced-pooling, or otherwise) or until a non-standard unit, eliminating such interests, has been approved by the Commission.
R24E



CERTIFICATION

I hereby certify that the information contained herein is true and complete to the best of my knowledge and belief.

Name *Tommy Phillips*
Executive Vice President
Position
Black River Corporation
Company
January 14, 1972
Date

I hereby certify that the well location shown on this plat was plotted from field notes of actual survey made by me or under my supervision, and that the same is true and correct to the best of my knowledge and belief.

January 7, 1972
Date Surveyed
Charles J. O'Meara
Registered Professional Engineer
and/or Land Surveyor

3954 N.M.
Certificate No.