

N. M. O. G. & CO.
W MEXICAN OIL CONSERVATION COMMISSION
WELL LOCATION AND ACREAGE DEDICATION PLAT

Copies 10
10
10
10
10
10
10
10
10
10

All distances must be from the outer boundaries of the Section

Owner <i>Black River Corporation</i>			Lease <i>City Federal</i>			Well No. <i>Black River</i>		
Section <i>1</i>	Township <i>33</i>	Range <i>T25S</i>	Section <i>R24E</i>	County <i>EDDY</i>				
Section 1, Township 33, Range R24E, Eddy County, New Mexico								
Well is located at distance of Well:		2080 feet from the <i>South</i> line and 660 feet from the <i>East</i> line						
Assigned Elevation		Producing Formation		Pool		Dedicated Acreage		
<i>3754</i>		<i>Morrow</i>		<i>New Pool</i>		<i>320</i>		

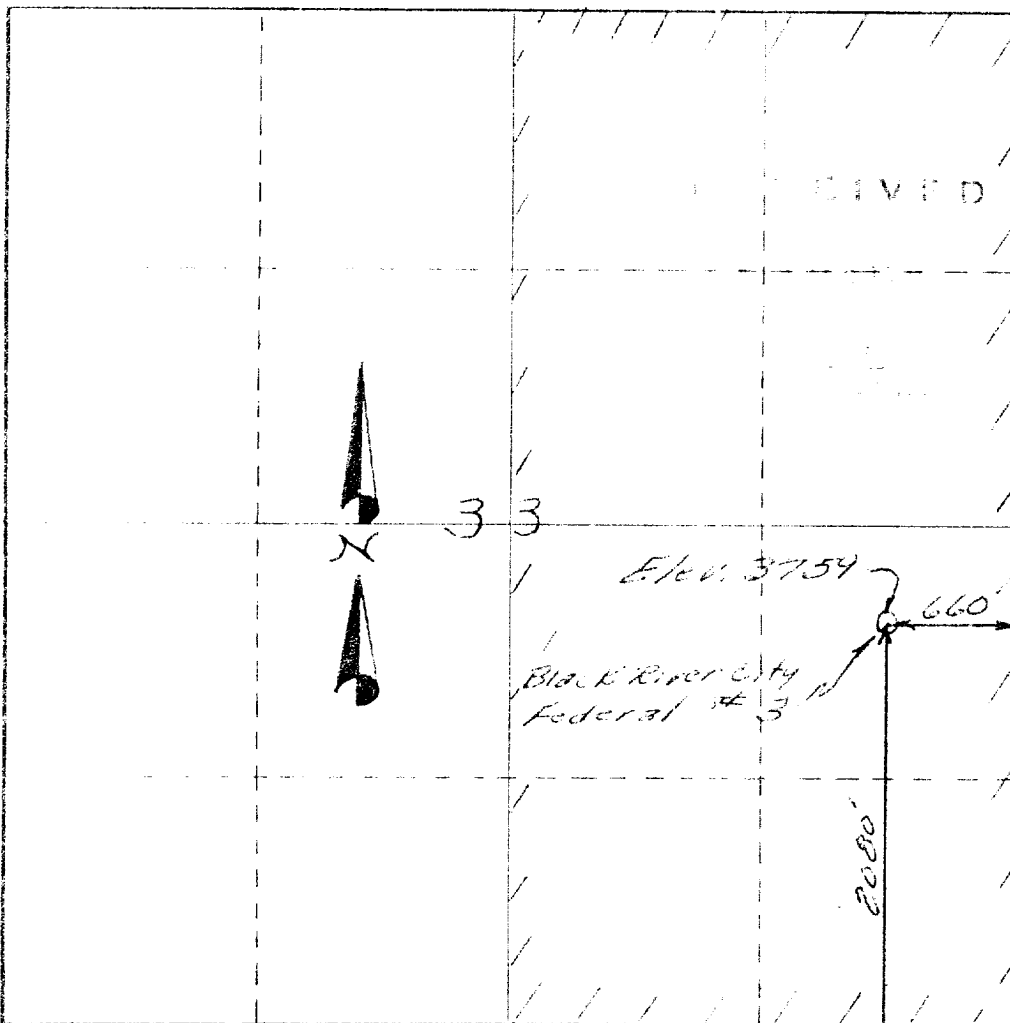
1. Outline the acreage dedicated to the subject well by colored pencil or hatchure marks on the plat below.
2. If more than one lease is dedicated to the well, outline each and identify the ownership thereof (both as to working interest and royalty).
3. If more than one lease of different ownership is dedicated to the well, have the interests of all owners been consolidated by communitization, unitization, force-pooling etc?

☐ Yes ☐ No If answer is "yes," type of consolidation _____

If answer is "no," list the owners and tract descriptions which have actually been consolidated. (Use reverse side of this form if necessary.) _____

No allowable will be assigned to the well until all interests have been consolidated (by communitization, unitization, forced-pooling, or otherwise) or until a non-standard unit, eliminating such interests, has been approved by the Commission.

R-24E



CERTIFICATION

I hereby certify that the information contained herein is true and complete to the best of my knowledge and belief.

RECEIVED
FEB 28 1972
U. S. GEOLOGICAL SURVEY
ARTESIA, NEW MEXICO

I hereby certify that the well location shown on this plat was plotted from field notes of actual surveys made by me or under my supervision, and that the same is true and correct to the best of my knowledge and belief.

Received Feb. 1972
Jan 7, 1972

Date Surveyed
Charles J. O'Meara
Registered Professional Engineer
and/or Land Surveyor

3754 U.M.
Certificate No.

