

RECEIVED

NEW MEXICO OIL CONSERVATION COMMISSION
WELL LOCATION AND ACREAGE DEDICATION PLAT MAY 26 1972

Form C-102
Supersedes C-128
Effective 1-1-65

All distances must be from the outer boundaries of the Section.

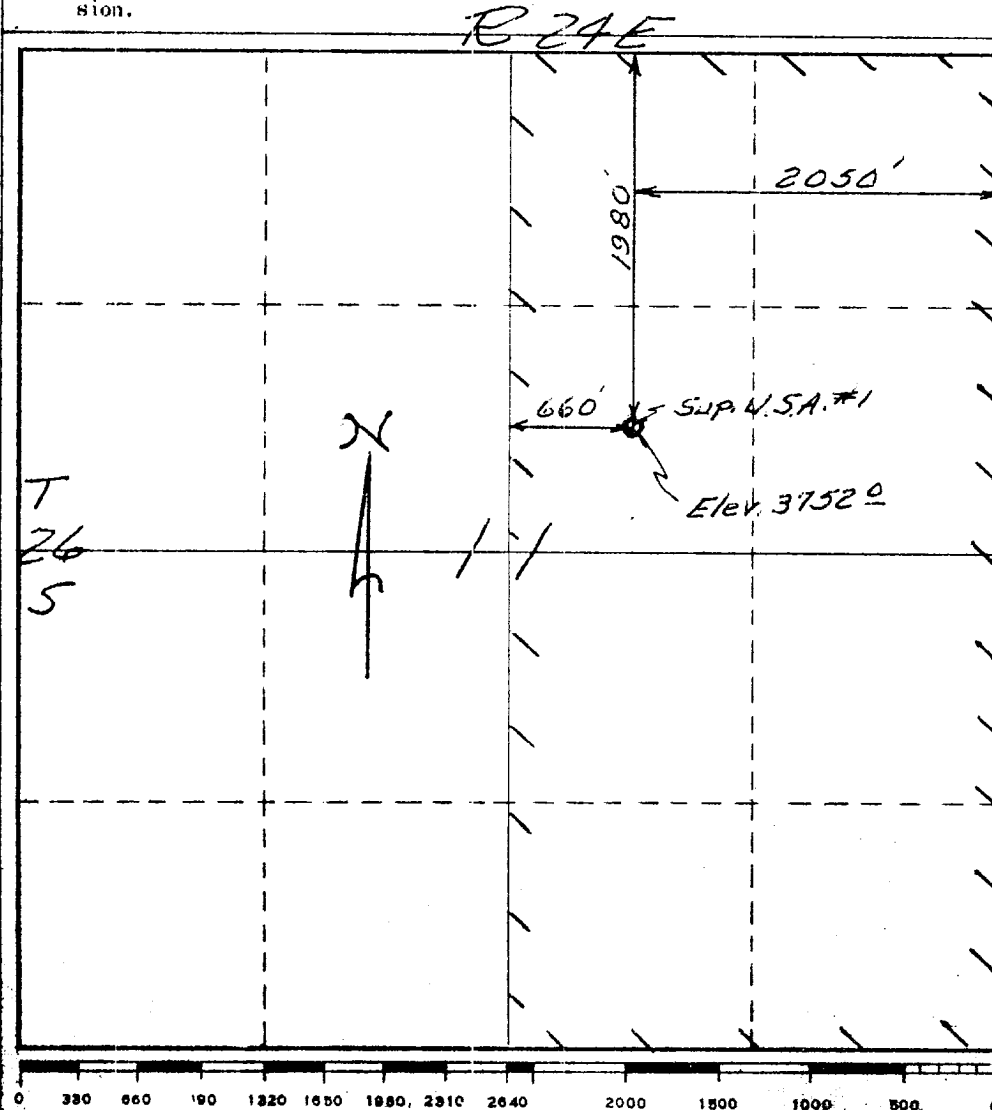
Operator J.M. HUBER CORP.		Lease SUP. U.S.A.		Well No. SUP. U.S.A. #1	
Unit Letter	Section 11	Township 26S	Range 24E	County EDDY	
Actual Footage Location of Well: 660 feet from the 1/4 Section line and 1980 feet from the North line					
Ground Level Elev. 3752⁰	Producing Formation MORROW		Pool WASHINGTON RANCH	Dedicated Acreage: 320 Acres	

1. Outline the acreage dedicated to the subject well by colored pencil or hachure marks on the plat below.
2. If more than one lease is dedicated to the well, outline each and identify the ownership thereof (both as to working interest and royalty).
3. If more than one lease of different ownership is dedicated to the well, have the interests of all owners been consolidated by communitization, unitization, force-pooling, etc?

☐ Yes ☐ No If answer is "yes," type of consolidation _____

If answer is "no," list the owners and tract descriptions which have actually been consolidated. (Use reverse side of this form if necessary.) _____

No allowable will be assigned to the well until all interests have been consolidated (by communitization, unitization, forced-pooling, or otherwise) or until a non-standard unit, eliminating such interests, has been approved by the Commission.



CERTIFICATION

I hereby certify that the information contained herein is true and complete to the best of my knowledge and belief.

James R. Sutherland
Name

James R. Sutherland

Position

District Prod. Supt.

Company

J.M. Huber Corporation

Date

April 14, 1972

I hereby certify that the information shown on this plat was plotted from field notes of a survey made by me or under my supervision, and that the same is true and correct to the best of my knowledge.

RECEIVED
APR 17 1972
U.S. GEOLOGICAL SURVEY
ARTESIA, NEW MEXICO

APR 12, 1972
Date Surveyed

Charles J. O'Mara
Registered Professional Engineer
and/or Land Surveyor

N.M. # 3954

Certificate No.