

APPLICATION FOR PERMIT TO DRILL, DEEPEN, OR PLUG BACK

PLUG BACK ☐

MULTIPLE ☐
ZONE

June 23, 1972

PROPOSED CASING AND CEMENTING PROGRAM

SIZE OF HOLE	SIZE OF CASING	WEIGHT PER FOOT	SETTING DEPTH	QUANTITY OF CEMENT
11	7-5/8	24	1000	550
6-3/4	5-1/2	14	4600	300

1. Drill 11" hole to 1000' with spud mud.
2. Set 7-5/8" casing at 1000' with 350 sxs. Incor w/4% gel and 1/2# flocele, plus 200 sxs. Incor w/2% CaCl.
3. Nipple up 10" - 3000 wp B.O.P. with pipe rams and blind rams.
4. Drill 3/4" hole to T.D. 4600' (Core Delaware Pay Zone).
5. Run DST and logs.
6. Run 5 1/2" casing for completion.

RECEIVED

JUN 26 1972

O. C. C.
ARTESIA, OFFICE

RECEIVED

JUN 20 1972
U. S. GEOLOGICAL SURVEY
ARTESIA, NEW MEXICO

IN ABOVE SPACE DESCRIBE PROPOSED PROGRAM: If proposal is to deepen or plug back, give data on present productive zone and proposed new productive zone. If proposal is to drill or deepen directionally, give pertinent data on subsurface locations and measured and true vertical depths. Give blowout preventer program, if any.

24

DATE 6-19-72

(This space for Federal or State office use)

PERMIT NO.

APPROVAL DATE

DATE _____

APPROVED BY
CONDITIONS OF APPROVAL, IF ANY

7 1972

15-
BEEKMAN

R. L. BEER
ACTING DISTRICT ENGINEER

APPROVED FOR TELETYPE OPERATIONS
THIS APPROVAL IS RESCINDED WITHIN 3 MONTHS.
SEP 23 1972
* See Instructions On Reverse
EXPIRES

***See Instructions On Reverse Side**

NEW MEXICO OIL CONSERVATION COMMISSION
WELL LOCATION AND ACREAGE DEDICATION PLAT

Form O-100
Supersedes O-100
Effective 1-1-69

All distances must be from the outer boundaries of the Section

DAVID FASKEN		Poker Lake Unit		Well No. 40
"N"	20	24 South	31 East	County Eddy
660	South	1980	West	Line
3475	Delaware	Will not	Dedicated Acreage:	

Outline the acreage dedicated to the subject well by colored pencil or hachure marks on the plat below.

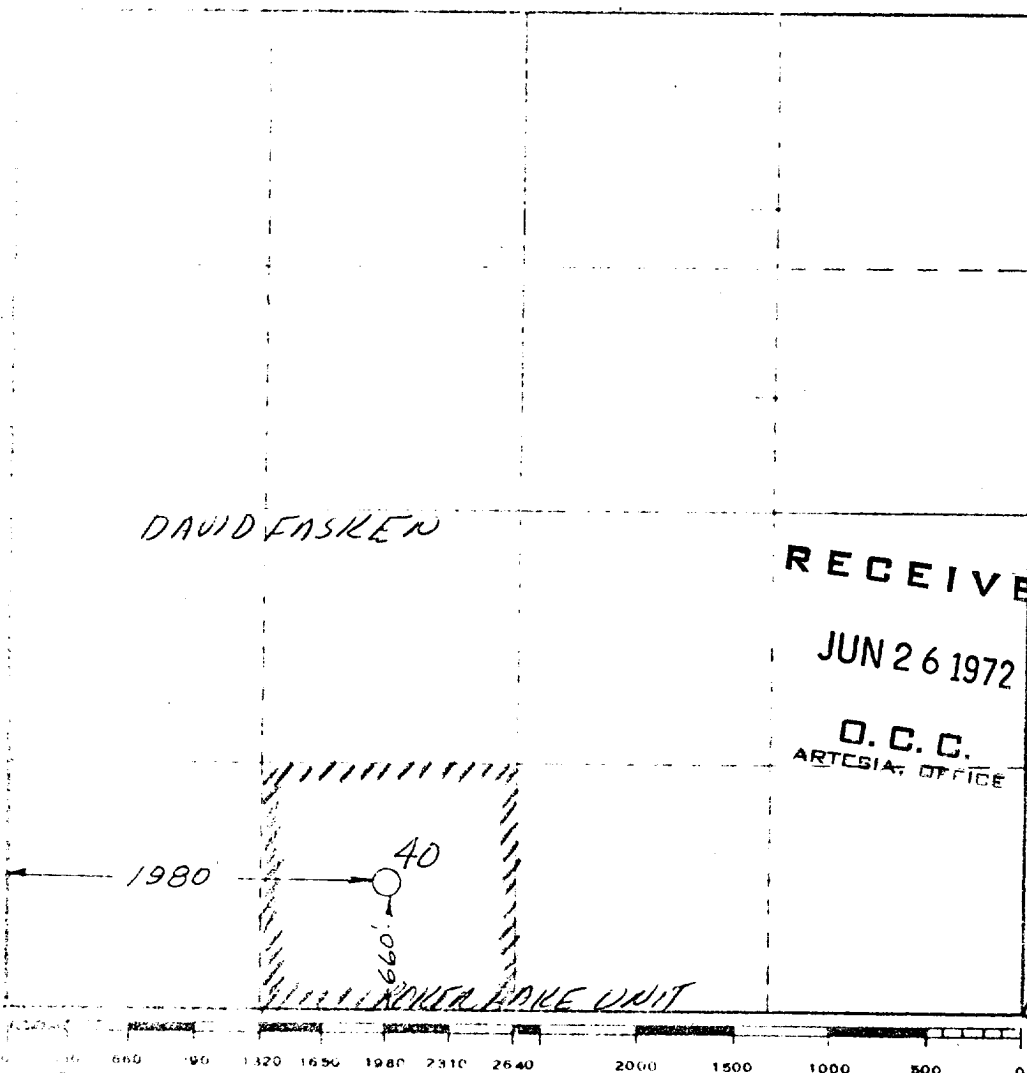
If more than one lease is dedicated to the well, outline each and identify the ownership thereof (both as to working interest and royalty).

If more than one lease of different ownership is dedicated to the well, have the interests of all owners been consolidated by communitization, unitization, force pooling, etc?

X Yes No If answer is "yes," type of consolidation Unitization

If answer is "no," list the owners and tract descriptions which have actually been consolidated. (Use reverse side of this form if necessary.)

If possible, will be assigned to the well until all interests have been consolidated (by communitization, unitization, force pooling, or otherwise) or until a non-standard unit, eliminating such interests, has been approved by the Commission.



CERTIFICATION

I hereby certify that the information contained herein is true and complete to the best of my knowledge and belief

Name

James B. Henry

Position

Agent

Company

David Fasken

Date

June 16, 1972

RECEIVED
JUN 26 1972
O. C. C.
ARTESIA OFFICE

RECEIVED
JUN 20 1972
U.S. GEOLOGICAL SURVEY
ARTESIA, NEW MEXICO

Date Surveyed

June 15, 1972

Registered Professional Engineer and/or Land Surveyer

Certificate No.

3640

JUN 26 1972

O. C. C.
ARTESIA, OFFICE

DEVELOPMENT PLAN FOR SURFACE USE

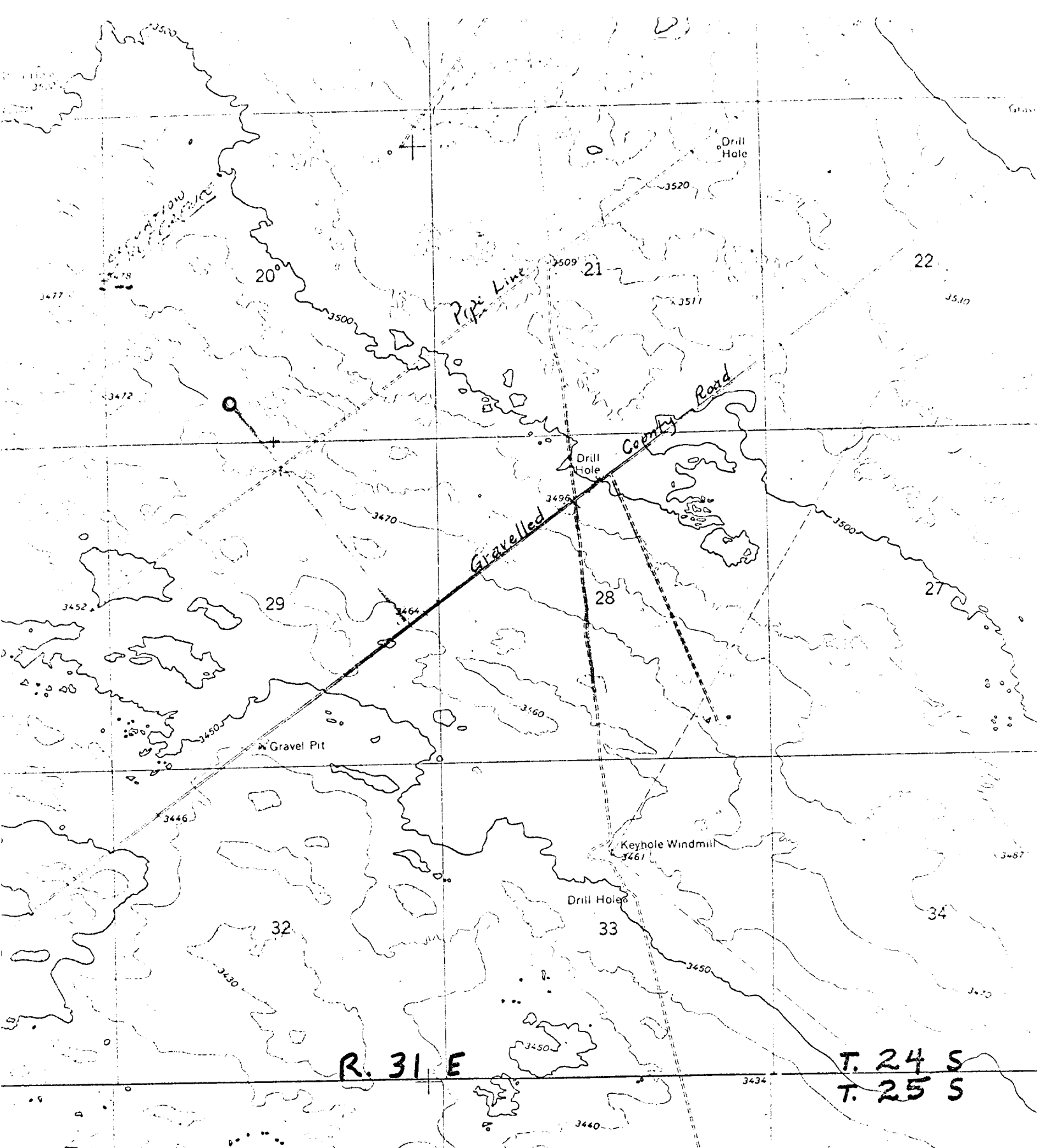
for the
DAVID FASKEN
Poker Lake Unit No. 40
1980' From West Line & 660' From South Line
Section 20, 24 South 31 East
Eddy County, New Mexico

1. The attached map "Area Roads and Locations" shows the existing and proposed roads and locations in the area.
2. The attached drawing "Location Diagram" shows the location layout. The location is in sandy soil with mesquite, shinners, and sparse grass.
3. Water will be supplied by a temporary line from water wells (Rustler formation) in Section 28. Supplemental water will be hauled in by trucks from commercial sources.
4. All waste disposal except drilling fluids will be immediately buried. Drilling fluid wastes will be into temporary pits which will be filled in later.
5. Mud pits will be stirred and allowed to dry. The pits and location will then be levelled.
6. If the well is a producer, a supplemental location diagram will be furnished showing surface production equipment.

RECEIVED

JUN 21 1972

U. S. GEOLOGICAL SURVEY
ARTESIA, NEW MEXICO




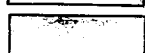
RECEIVED

JUN 26 1972

D. C. C.
OFFICE

AREA ROADS

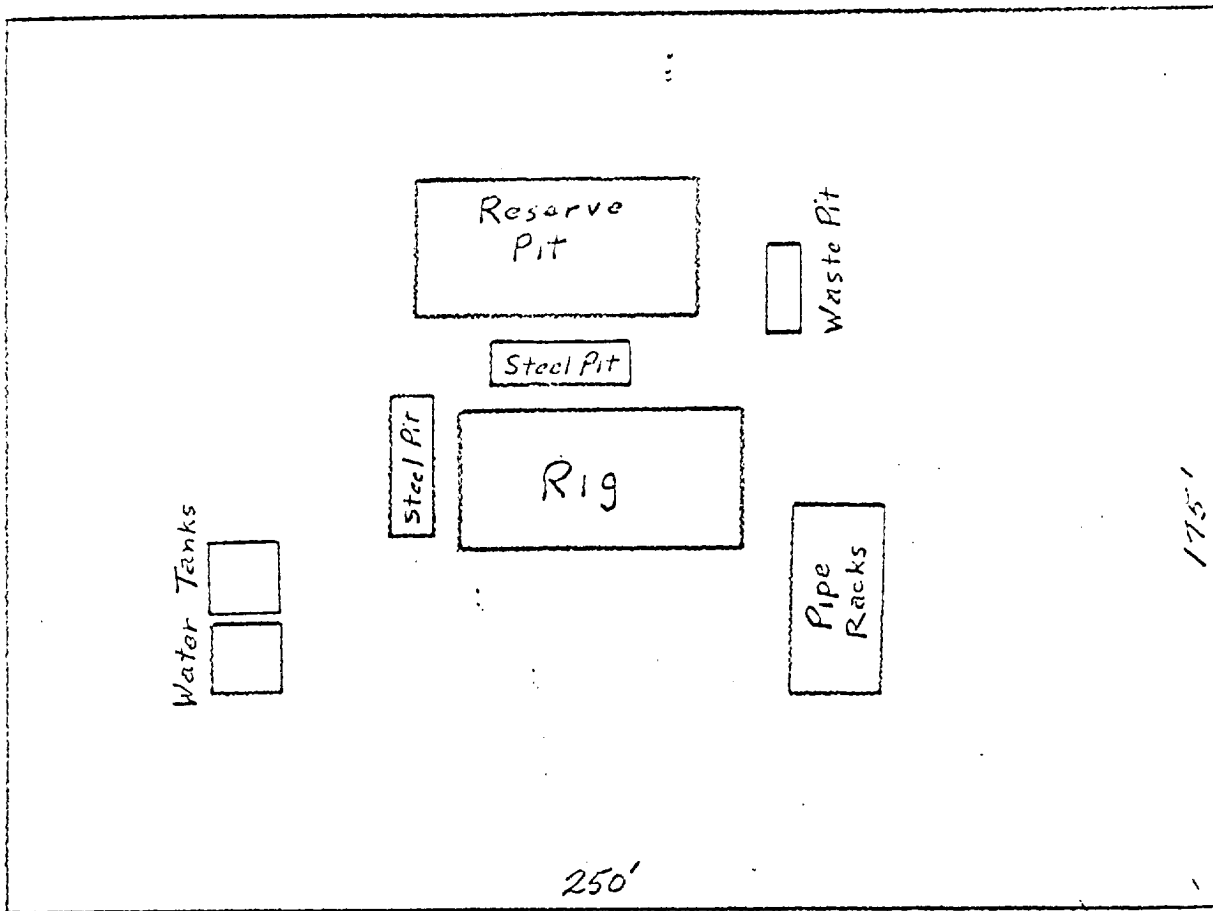
DAVID FASKEN - Poker Lake Unit No. 40
Eddy County, New Mexico

-  Existing Roads
-  Proposed Roads

RECEIVED

JUN 21 1972

U. S. GEOLOGICAL SURVEY
ARTESIA, NEW MEXICO



LOCATION DIAGRAM

DAVID FASKEN

Poker Lake Unit No. 40

RECEIVED

JUN 26 1972

O. C. C.
ARTESIA, OFFICE

HENRY ENGINEERING
MIDLAND, TEXAS

RECEIVED

JUN 21 1972

U. S. GEOLOGICAL SURVEY
ARTESIA, NEW MEXICO