

N. M. O. C. C. COAL

SUBMIT IN TRIPLICATE  
(Other instructions on  
reverse side)Form approved.  
Budget Bureau No. 42-R1425.UNITED STATES  
DEPARTMENT OF THE INTERIOR  
GEOLOGICAL SURVEY

## APPLICATION FOR PERMIT TO DRILL, DEEPEN, OR PLUG BACK

## 1a. TYPE OF WORK

DRILL ☒DEEPEN ☐PLUG BACK ☐

## b. TYPE OF WELL

OIL  
WELL ☒GAS  
WELL ☐

OTHER

SINGLE  
ZONE ☒MULTIPLE  
ZONE ☐

## 2. NAME OF OPERATOR

Midwest Oil Corporation ✓

## 3. ADDRESS OF OPERATOR

1500 Wilco Bldg. Midland, Texas 79701

## 4. LOCATION OF WELL (Report location clearly and in accordance with any State requirements.)\*

At surface

2080' FNL &amp; 1980' FWL

At proposed prod. zone

same

## 14. DISTANCE IN MILES AND DIRECTION FROM NEAREST TOWN OR POST OFFICE\*

O. C. C.  
ARTESIA, OFFICE

## 15. DISTANCE FROM PROPOSED\*

LOCATION TO NEAREST  
PROPERTY OR LEASE LINE, FT.  
(Also to nearest drlg. unit line, if any)

1980'

## 16. NO. OF ACRES IN LEASE

1120

17. NO. OF ACRES ASSIGNED  
TO THIS WELL

80-40

18. DISTANCE FROM PROPOSED LOCATION\*  
TO NEAREST WELL, DRILLING, COMPLETED,  
OR APPLIED FOR, ON THIS LEASE, FT.

## 19. PROPOSED DEPTH

2150'

## 20. ROTARY OR CABLE TOOLS

Rotary

## 21. ELEVATIONS (Show whether DF, RT, GR, etc.)

## 22. APPROX. DATE WORK WILL START\*

Upon Approval

## 23.

## PROPOSED CASING AND CEMENTING PROGRAM

SIZE OF HOLE	SIZE OF CASING	WEIGHT PER FOOT	SETTING DEPTH	QUANTITY OF CEMENT
17 1/4	13 3/8	48#	400	350 sx
7 7/8	4 1/2	9.5#	2150	To be determined when TD reached

RECEIVED

OCT 23 1973

U. S. GEOLOGICAL SURVEY  
ARTESIA, NEW MEXICO

IN ABOVE SPACE DESCRIBE PROPOSED PROGRAM: If proposal is to deepen or plug back, give data on present productive zone and proposed new productive zone. If proposal is to drill or deepen directionally, give pertinent data on subsurface locations and measured and true vertical depths. Give blowout preventer program, if any.

## 24.

SIGNED

Bonnie Husband

TITLE

Production Clerk

DATE

10-22-73

(This space for Federal or State office use)

PERMIT NO.

APPROVAL DATE

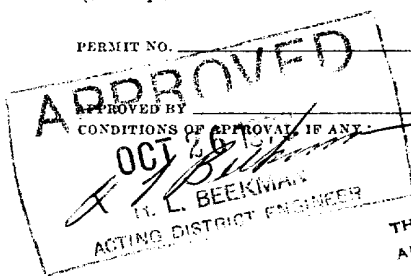
TITLE

DECLARED WATER BASIN  
DATE

138

CEMENT BEHIND THE  
CASING MUST BE CIRCULATED

THIS APPROVAL IS RECORDED IF OPERATIONS  
ARE NOT COMMENCED WITHIN 3 MONTHS.  
See Instructions On Reverse Side  
EXPIRES JAN 20 1974



NEW MEXICO OIL CONSERVATION COMMISSION  
WELL LOCATION AND ACREAGE DEDICATION PLATForm C-102  
Supersedes C-128  
Effective 1-1-65

All distances must be from the outer boundaries of the Section.

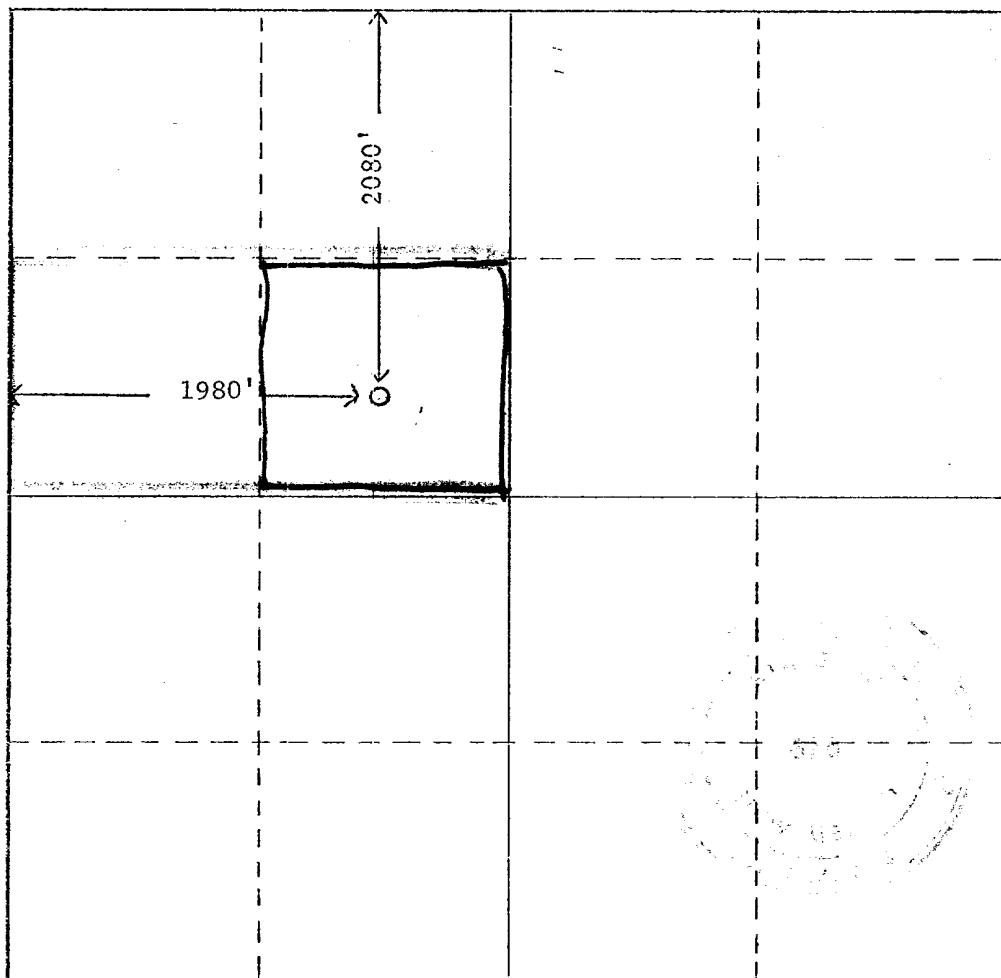
Operator <b>Midwest Oil Corporation</b>			Lease <b>Federal N</b>		Well No. <b>1</b>
Unit Letter <b>F</b>	Section <b>21</b>	Township <b>25S</b>	Range <b>26E</b>	County <b>Eddy</b>	
Actual Footage Location of Well: <b>2080'</b> feet from the <b>North</b> line and <b>1980'</b> feet from the <b>West</b> line					
Ground Level Elev.	Producing Formation <b>Delaware</b>		Pool <b>S. Hackberry WC</b>	Dedicated Acreage: <b>40</b> <b>8/2 NW/4-80</b> Acres	

1. Outline the acreage dedicated to the subject well by colored pencil or hachure marks on the plat below.
2. If more than one lease is dedicated to the well, outline each and identify the ownership thereof (both as to working interest and royalty).
3. If more than one lease of different ownership is dedicated to the well, have the interests of all owners been consolidated by communitization, unitization, force-pooling, etc?

☐ Yes ☐ No If answer is "yes," type of consolidation \_\_\_\_\_

If answer is "no," list the owners and tract descriptions which have actually been consolidated. (Use reverse side of this form if necessary.) \_\_\_\_\_

No allowable will be assigned to the well until all interests have been consolidated (by communitization, unitization, forced-pooling, or otherwise) or until a non-standard unit, eliminating such interests, has been approved by the Commission.



## CERTIFICATION

I hereby certify that the information contained herein is true and complete to the best of my knowledge and belief.

*Bonnie Husband*

Name

Bonnie Husband

Position

Production Clerk

Company

Midwest Oil Corporation

Date

10-22-73

**RECEIVED**

I hereby certify that the well location shown on this plat was plotted from field notes of actual surveys made by me or under my supervision and that the same is true and correct to the best of my knowledge and belief.

Date Surveyed

9-26-73

Registered Professional Engineer and/or Land Surveyor

*John W. West*

Certificate No.

1676

0 330 660 990 1320 1650 1980 2310 2640 2970 3300 3630 3960 4290 4620 4950 5280 5610 5940 6270 6600

SURFACE DEVELOPMENT PLAN

Midwest Oil Corporation  
Federal "N" No. 1  
1980<sup>1</sup> FNL & 1980<sup>1</sup> FWL  
Sec. 21, T25S, R26E  
Eddy County, New Mexico

1. Existing roads - See attached map.
2. Planned access roads - See attached plat.
3. Location of wells - No. 1 Cottonwood Spring Unit approximately 1 mile west.
4. Lateral roads to well locations - See attached map.
5. Tank batteries and flow lines will be located on well pad.
6. Water supply - Water to be supplied by trucks.
7. Waste disposal - All paper, metal, wood and other waste material will be collected and disposed of in a waste collection pit located northeast of the pad's edge. The waste pit will be covered when the drilling and completion operation is finalized.
8. Produced brine water will be collected in a metal tank & trucked to the nearest available salt water disposal facility.
9. Produced oil will be sold through the best available market in the area.
10. Location layout - See attached plat.
11. Restoration of surface - Reserve pits will be levelled & smoothed after drying. The area will be cleaned of all waste & restored as nearly as possible to its original contour.
12. Blowout preventer equipment will be installed when surface casing is set.

Well to be drilled 0-TD with air.

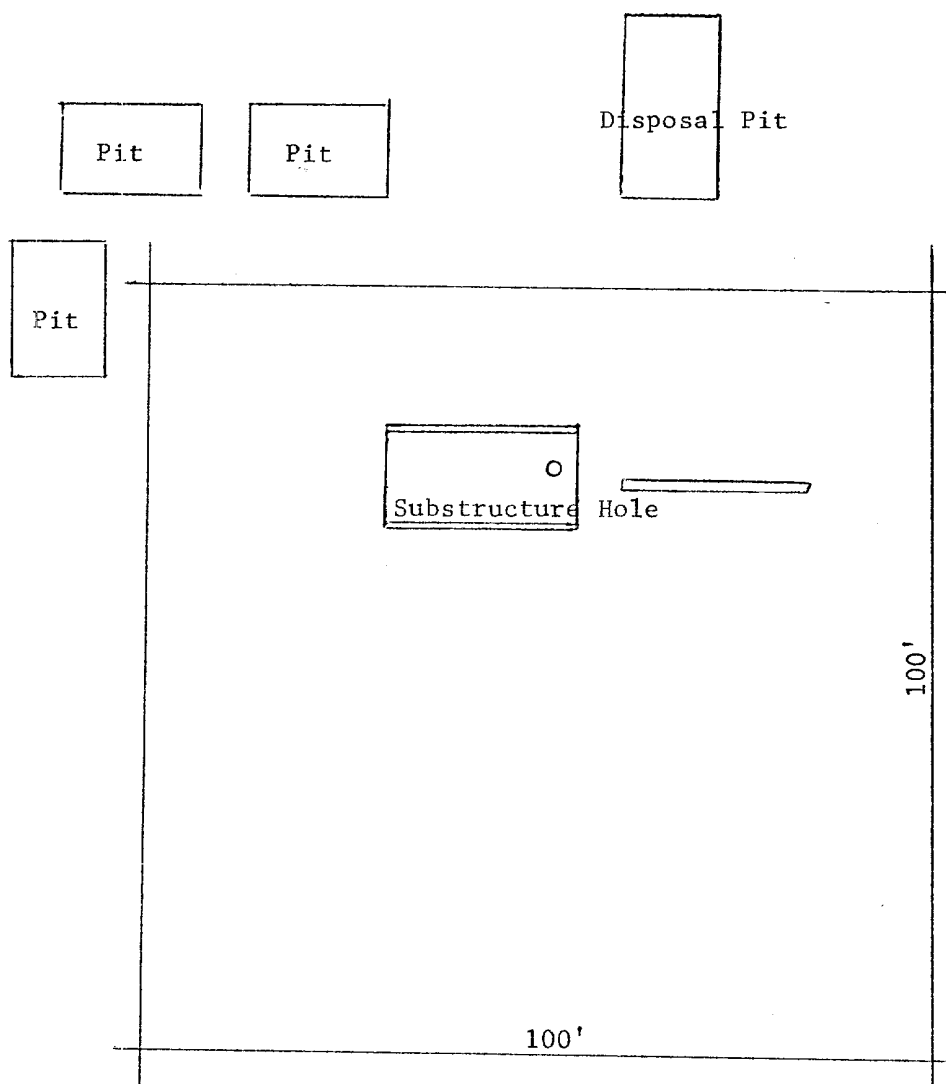
*Bonnie Husband*  
Bonnie Husband

Production Clerk

10-1-73

RECEIVED  
OCT 3 1973  
U. S. GEOLOGICAL SURVEY  
ALBUQUERQUE, NEW MEXICO

MIDWEST OIL CORPORATION  
#1 Federal "N"  
1980' FNL & 1980' FWL  
Sec. 21, T25S, R26E  
Eddy County, New Mexico



RECEIVED  
OCT 8 1973  
U. S. GEOLOGICAL SURVEY  
ALBUQUERQUE, NEW MEXICO

19

Existing County Road



Cottonwood  
O Spring Unit #1  
Planned Access Road

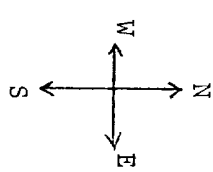
20

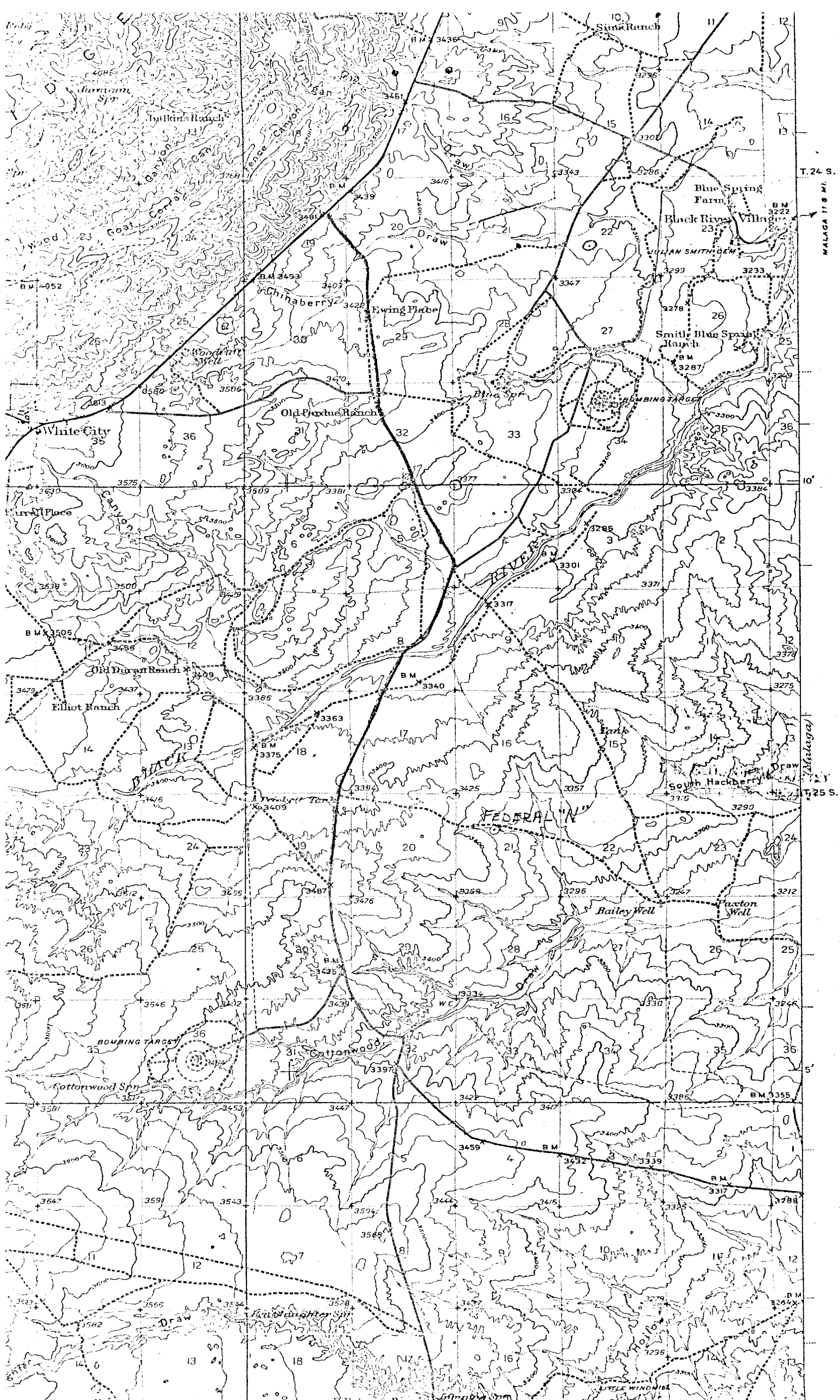


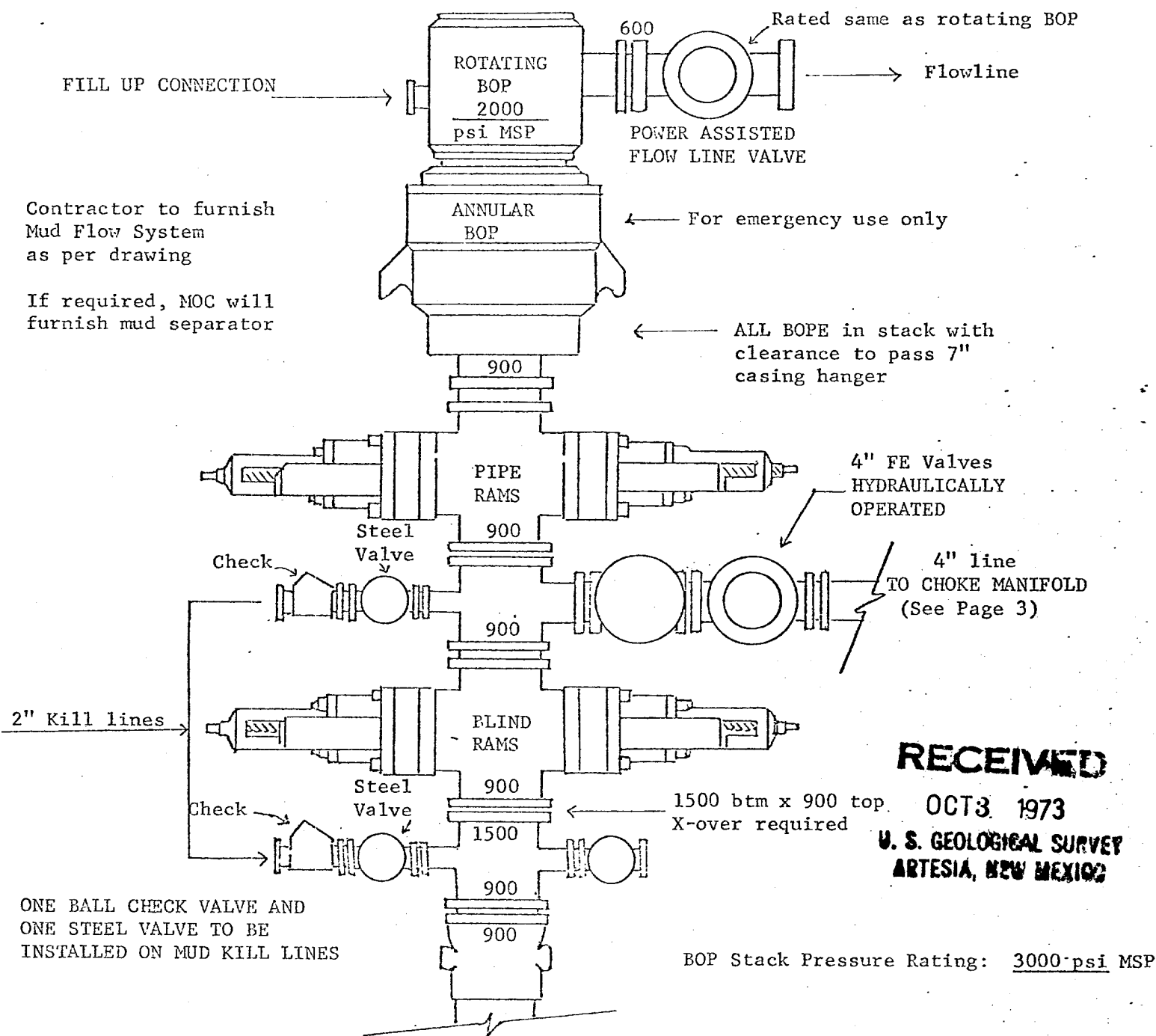
Location  
O Federal "N" #1

21

RECEIVED  
JUL 12 1973  
U.S. GEOLOGICAL SURVEY  
WATER RESOURCES DIVISION







**RECEIVED**

OCT 3 1973

U. S. GEOLOGICAL SURVEY  
ARTESIA, NEW MEXICO

THE FOLLOWING CONSTITUTE MINIMUM BLOWOUT PREVENTER REQUIREMENTS

1. ALL PREVENTERS TO BE HYDRAULICALLY OPERATED WITH SECONDARY MANUAL CONTROLS INSTALLED PRIOR TO DRILLING OUT FROM UNDER CASING.
2. CHOKE OUTLET TO BE A MINIMUM OF 4" DIAMETER.
3. KILL LINE TO BE OF ALL STEEL CONSTRUCTION OF 2" MINIMUM DIAMETER.
4. OPENING BETWEEN RAMS TO BE FLANGED, STUDDED, OR CLAMPED.
5. ALL CONNECTIONS FROM OPERATING MANIFOLDS TO PREVENTERS TO BE ALL STEEL HOSE OR TUBE A MINIMUM OF ONE INCH IN DIAMETER.
6. THE AVAILABLE CLOSING PRESSURE SHALL BE AT LEAST 15% IN EXCESS OF THAT REQUIRED WITH SUFFICIENT VOLUME TO OPERATE THE B.O.P.'s.
7. ALL CONNECTIONS TO AND FROM PREVENTER TO HAVE A PRESSURE RATING EQUIVALENT TO THAT OF THE B.O.P.'s.
8. UPPER & LOWER KELLY COCK TO BE INSTALLED ON KELLY. USE MUD SCREEN IN LOWER VALVE.
9. INSIDE BLOWOUT PREVENTER TO BE AVAILABLE ON RIG FLOOR.
10. DUAL OPERATING CONTROLS - ONE LOCATED BY DRILLERS POSITION AND THE OTHER LOCATED A SAFE DISTANCE FROM THE RIG FLOOR.
1. KILL LINE FOR EMERGENCY USE ONLY - NOT TO BE USED FOR FILL UP.
2. STABBING VALVES FOR ALL CONNECTIONS IN DRILL STRING TO BE LOCATED ON RIG FLOOR.
3. HOLE MUST BE KEPT FILLED ON TRIPS BELOW INTERMEDIATE CASING. OPERATOR NOT RESPONSIBLE FOR BLOWOUTS RESULTING FROM NOT KEEPING HOLE FULL.
4. DRILLPIPE FLOAT MUST BE INSTALLED AND USED BELOW ZONE OF FIRST GAS INTRUSION, OR 10,000', WHICHEVER COMES FIRST.