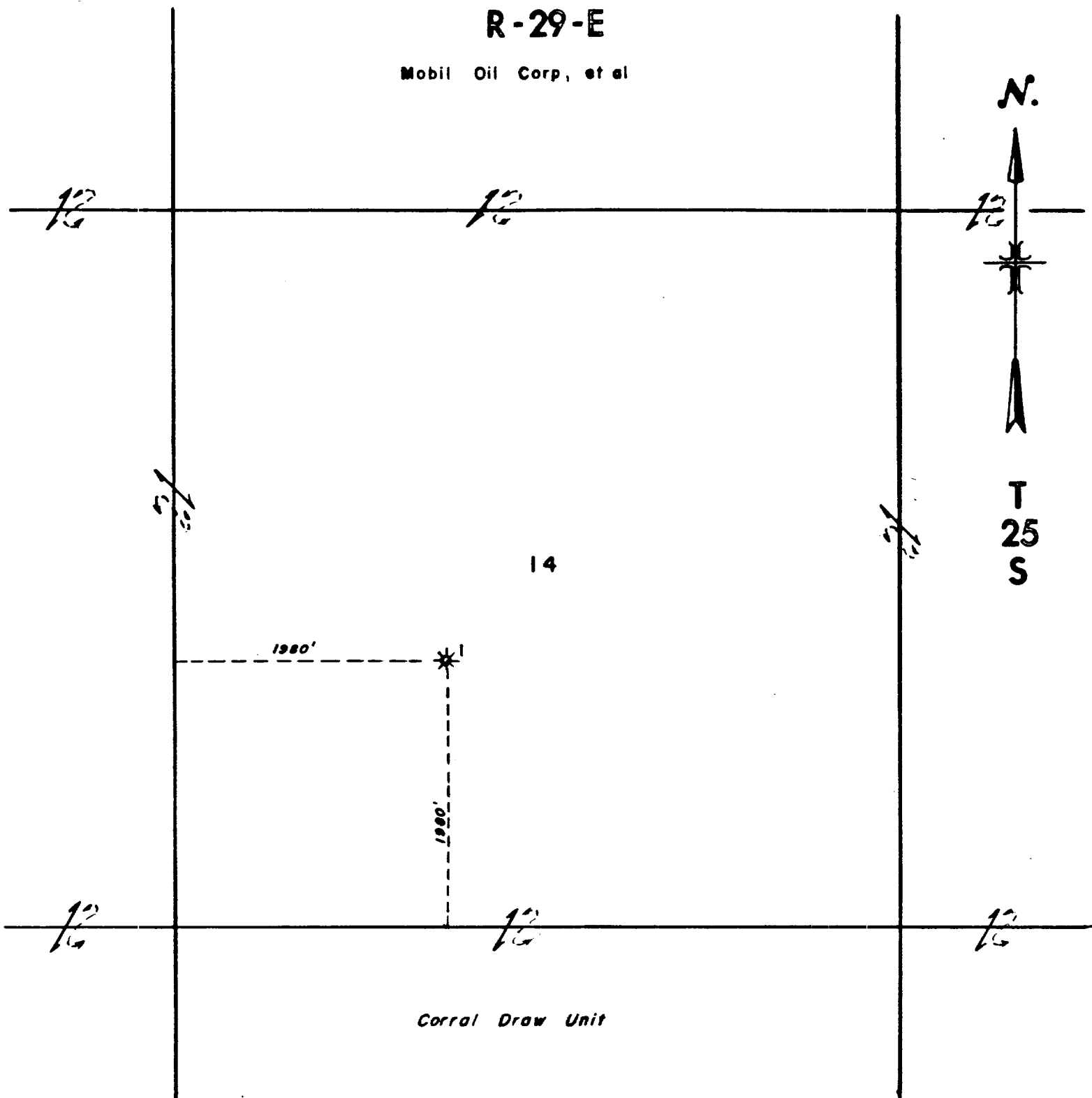


R-29-E

Mobil Oil Corp, et al



Reserve _____ Permit depth _____

Special Instructions _____ Recompletion from Morrow (13,621'-702') to Cherry Canyon (5215'-35')
or Bell Canyon (3289'-3300')

Date work is commenced _____, 19____ Supt. _____

Location approved by _____ Plot by _____ Surveyed by _____

THE STATE OF TEXAS
COUNTY OF MIDLAND

I hereby certify that this plat truly represents conditions as they actually exist on this lease; that said plat which is drawn to the scale indicated hereon, is to the best of my knowledge true and correct; that it accurately shows said lease with all wells on same; that number and locations of said wells are as indicated hereon; and that this plat correctly reflects all pertinent and required data.

Mobil Producing
Texas & New Mexico Inc.
Houston, Texas

LEASE Corral Draw Unit
WELL NO. 1 DATE July 20, 19 83
DIVISION _____ LEASE NO. NM-3747-B
TOTAL ACRES IN LEASE 19,198.88 ACRES COVERED BY PLAT 640
DESCRIPTION 19,198.88 Acres in Twp. 25 & 26 S., R 29 E.

Eddy County, New Mexico

DRAWN MLC DATE 12-73 FIELD Corral Draw (WILDCAT)
SCALE 1" = 1000' FILE NO. 85