

UNITED STATES
DEPARTMENT OF THE INTERIOR
GEOLOGICAL SURVEY

APPLICATION FOR PERMIT TO DRILL, DEEPEN, OR PLUG BACK

1a. TYPE OF WORK

DRILL ☐RECEIVED
DEEPEN ☒PLUG BACK ☐

b. TYPE OF WELL

OIL
WELL ☐GAS
WELL ☐OTHER ☐SINGLE
ZONE ☐MULTIPLE
ZONE ☐

2. NAME OF OPERATOR

BLACK RIVER CORPORATION

3. ADDRESS OF OPERATOR

620 Commercial Bank Tower, Midland, Texas 79701

4. LOCATION OF WELL (Report location clearly and in accordance with any State requirements.)

At surface

2310' FWL 660' FSL

At proposed prod. zone

14. DISTANCE IN MILES AND DIRECTION FROM NEAREST TOWN OR POST OFFICE*

12 miles SW White's City, New Mexico

15. DISTANCE FROM PROPOSED*

LOCATION TO NEAREST
PROPERTY OR LEASE LINE, FT.
(Also to nearest drlg. unit line, if any)

330'

16. NO. OF ACRES IN LEASE

601.95

17. NO. OF ACRES ASSIGNED
TO THIS WELL

40

18. DISTANCE FROM PROPOSED LOCATION*
TO NEAREST WELL, DRILLING COMPLETED,
OR APPLIED FOR, ON THIS LEASE, FT.

19. PROPOSED DEPTH

1,500

20. ROTARY OR CABLE TOOLS

Rotary

21. ELEVATIONS (Show whether DF, RT, GR, etc.)

Ground Level 3,791.2

22. APPROX. DATE WORK WILL START*

January 28, 1974

23.

PROPOSED CASING AND CEMENTING PROGRAM

SIZE OF HOLE	SIZE OF CASING	WEIGHT PER FOOT	SETTING DEPTH	QUANTITY OF CEMENT
11	7	26	700	350 Sx
6	4 1/2	9.5	TD	200 Sx

It is proposed to drill an 11 inch hole to 700 feet. At which time 7 inch casing will be run and cement circulated to surface. After WOC a minimum of 18 hours the casing will be tested to 1,000 psi. If test ok, will drill with Delaware formation water to TD. A double ram BOP 3,000# will be used while drilling this interval. At total depth, if well appears productive the 4-1/2 inch casing will be run with cement sufficient to return approximately 300 feet into the casing.

RECEIVED

JAN - 4 1974

U. S. GEOLOGICAL SURVEY
ARTESIA, NEW MEXICO

IN ABOVE SPACE DESCRIBE PROPOSED PROGRAM: If proposal is to deepen or plug back, give data on present productive zone and proposed new productive zone. If proposal is to drill or deepen directionally, give pertinent data on subsurface locations and measured and true vertical depths. Give blowout preventer program, if any.

24.

SIGNED

Bonnie Lowder

TITLE Treasurer

DATE January 3, 1974

(This space for Federal or State office use)

PERMIT NO.

APPROVAL DATE

JAN 21 1974

APPROVED BY

J. A. Kraut

TITLE

DISTRICT ENGINEER

DATE

THIS APPROVAL IS RESCINDED IF OPERATIONS
ARE NOT COMMENCED WITHIN 3 MONTHS
JAN 31 1974DECLARED WATER BASIN
7"
CEMENT BEHIND
CASING MUST BE CIRCULATED

*See Instructions On Reverse Side

N. MEXICO OIL CONSERVATION COMMISS.
WELL LOCATION AND ACREAGE DEDICATION PLAT

Form C-102
 Supersedes C-128
 Effective 1-1-65

All distances must be from the outer boundaries of the Section

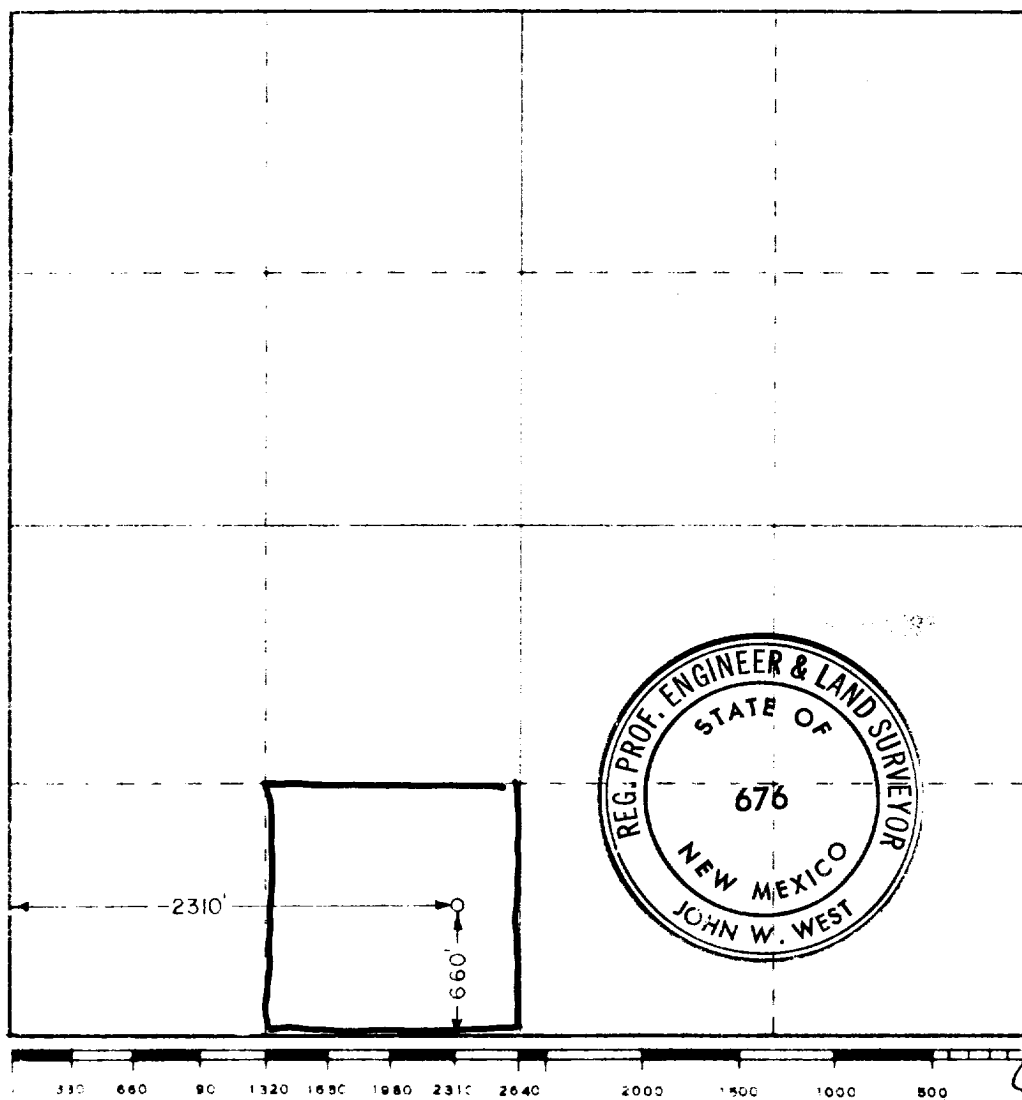
Operator BLACK RIVER CORPORATION			Lease 6R 33 FEDERAL		Well No. 22
Part Letter N	Section 33	Township 25 SOUTH	Range 24 EAST	County EDDY	
Actual Footage Location of Well:					
2310	feet from the	WEST	line and	660	feet from the SOUTH line
Ground Level Elev. 3791.2	Producing Formation DELAWARE SAND		Pool WILD CAT	Dedicated Acreage: 40	

- 1 Outline the acreage dedicated to the subject well by colored pencil or hatchure marks on the plat below.
- 2 If more than one lease is dedicated to the well, outline each and identify the ownership thereof (both as to working interest and royalty).
- 3 If more than one lease of different ownership is dedicated to the well, have the interests of all owners been consolidated by communitization, unitization, force-pooling, etc?

☒ Yes ☐ No If answer is "yes" type of consolidation _____

If answer is "no" list the owners and tract descriptions which have actually been consolidated. (Use reverse side of this form if necessary.) _____

No allowable will be assigned to the well until all interests have been consolidated (by communitization, unitization, forced-pooling, or otherwise) or until a non-standard unit, eliminating such interests, has been approved by the Commission.



CERTIFICATION

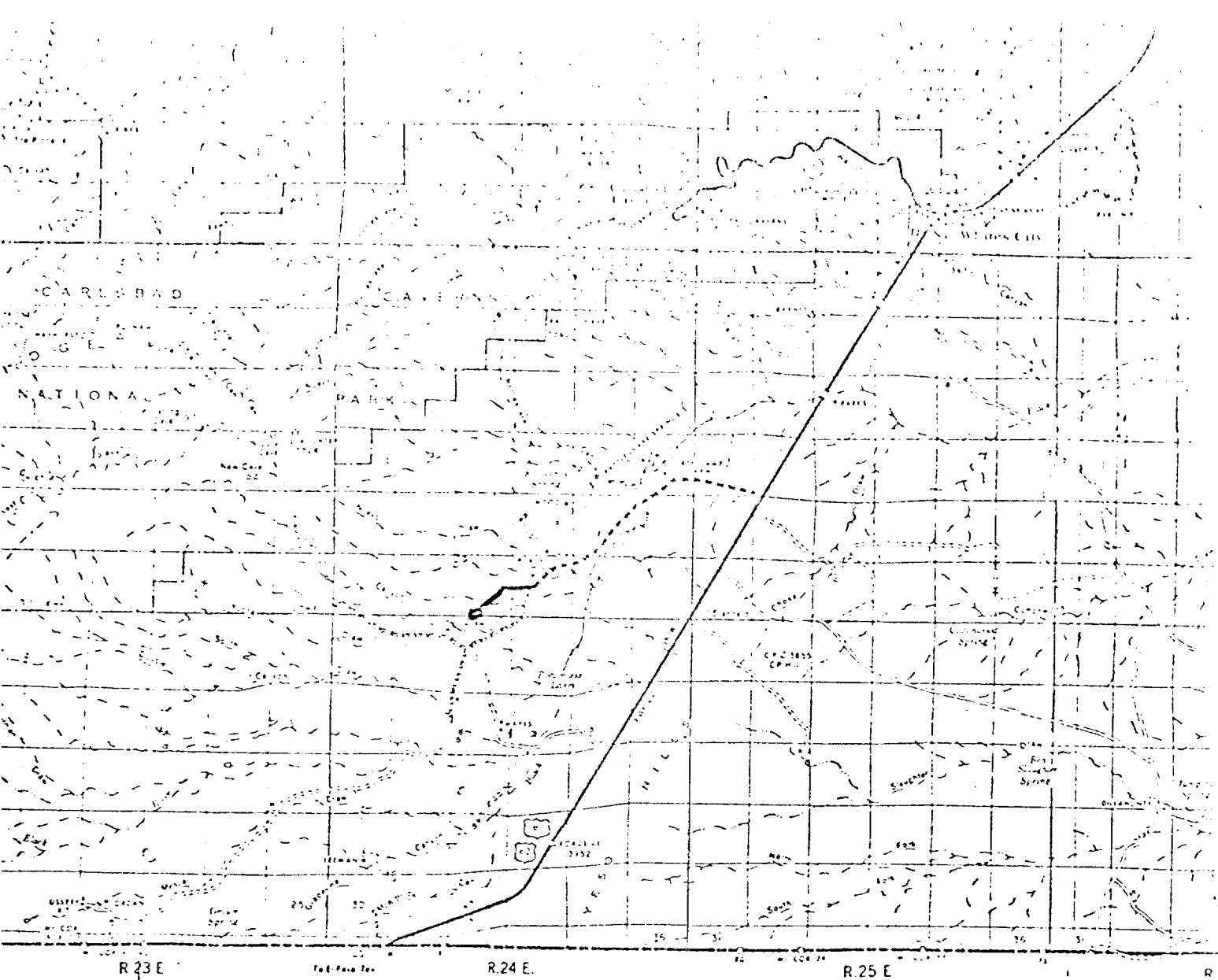
I hereby certify that the information contained herein is true and complete to the best of my knowledge and belief.

By Ronnie Lowders
 Treasurer
Black River Corporation
 Date 1-3-74

I hereby certify that the well location shown on this plat was plotted from field notes of actual surveys made by me or under my supervision, and that the same is true and correct to the best of my knowledge and belief.

Date Surveyed
December 28, 1973
 Registered Professional Engineer
 and/or Land Surveyor

John W. West
 Certificate No. **676**



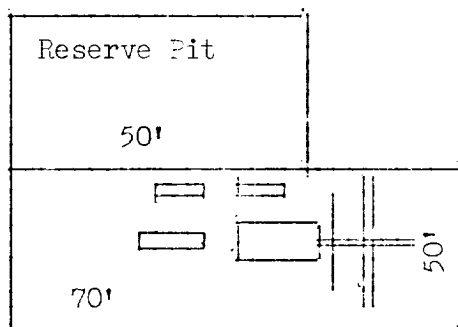
BLACK RIVER CORPORATION
 Surface Use Development Plan
 Well - BR Federal - 33 No 1
 Date - January 2, 1974

2310' FWL 660' FSL Section 33

Black River Corporation

Access Road

Rig Layout



We propose to build an excess road from the existing road at approximately 660' from the Sec Line of Section 33 in a south westerly direction to location.

If productive, tank battery and flow line will be located on drilling pad.

Drilling water will be hauled to location.

No camps or airstrips.

Waste will be hauled to proper waste disposal.

After completion, location and pits will be leveled and filled.