

UNITED STATES
DEPARTMENT OF THE INTERIOR
GEOLOGICAL SURVEY

APPLICATION FOR PERMIT TO DRILL, DEEPEN, OR PLUG BACK

1a. TYPE OF WORK

DRILL ☒DEEPEN ☐PLUG BACK ☐

b. TYPE OF WELL

OIL
WELL ☒GAS
WELL ☐

OTHER

SINGLE
ZONE ☐MULTIPLE
ZONE ☐

2. NAME OF OPERATOR

Midwest Oil Corporation

3. ADDRESS OF OPERATOR

1500 Wilco Bldg. - Midland, Texas 79701

4. LOCATION OF WELL (Report location clearly and in accordance with any State requirements.)*

At surface

660' FNL & 660' FWL

At proposed prod. zone

Same

14. DISTANCE IN MILES AND DIRECTION FROM NEAREST TOWN OR POST OFFICE*

15. DISTANCE FROM PROPOSED*

LOCATION TO NEAREST
PROPERTY OR LEASE LINE, FT.
(Also to nearest drlg. unit line, if any)18. DISTANCE FROM PROPOSED LOCATION*
TO NEAREST WELL, DRILLING, COMPLETED,
OR APPLIED FOR, ON THIS LEASE, FT.

16. NO. OF ACRES IN LEASE

1280

19. PROPOSED DEPTH

1700'

17. NO. OF ACRES ASSIGNED
TO THIS WELL

40

20. ROTARY OR CABLE TOOLS

Rotary

21. ELEVATIONS (Show whether DF, RT, GR, etc.)

GR 3515.4

22. APPROX. DATE WORK WILL START*

Upon Approval

23.

PROPOSED CASING AND CEMENTING PROGRAM

SIZE OF HOLE	SIZE OF CASING	WEIGHT PER FOOT	SETTING DEPTH	QUANTITY OF CEMENT
11"	7-5/8"	24 #	400'	350 sx
6-3/4"	4 1/2"	9.5#	1700'	To be determined @ TD

IN ABOVE SPACE DESCRIBE PROPOSED PROGRAM: If proposal is to deepen or plug back, give data on present productive zone and proposed new productive zone. If proposal is to drill or deepen directionally, give pertinent data on subsurface locations and measured and true vertical depths. Give blowout preventer program, if any.

24.

SIGNED

Bonnie Husband

TITLE

Production Clerk

DATE

4-2-74

(This space for Federal or State office use)

PERMIT NO.

APPROVAL DATE

APPROVED BY

TITLE

DATE

CONDITION OF APPROVAL, IF ANY:

BH/1b

THIS APPROVAL IS VOIDED IF OPERATIONS
ARE NOT COMMENCED WITHIN 3 MONTHS.
EXPIRES JUL 15 1974
See Instructions On Reverse Side

DECLARED WATER BASIN
CEMENT BEHIND THE
CASING MUST BE CIRCULATED

RECEIVED

APR 5 1974

U. S. GEOLOGICAL SURVEY
ARTESIA, NEW MEXICO

DECLARED WATER BASIN

CEMENT BEHIND THE
CASING MUST BE CIRCULATED

NEW MEXICO OIL CONSERVATION COMMISSION
WELL LOCATION AND ACREAGE DEDICATION PLAT

Form C-102
Supersedes C-128
Effective 1-1-65

All distances must be from the outer boundaries of the Section

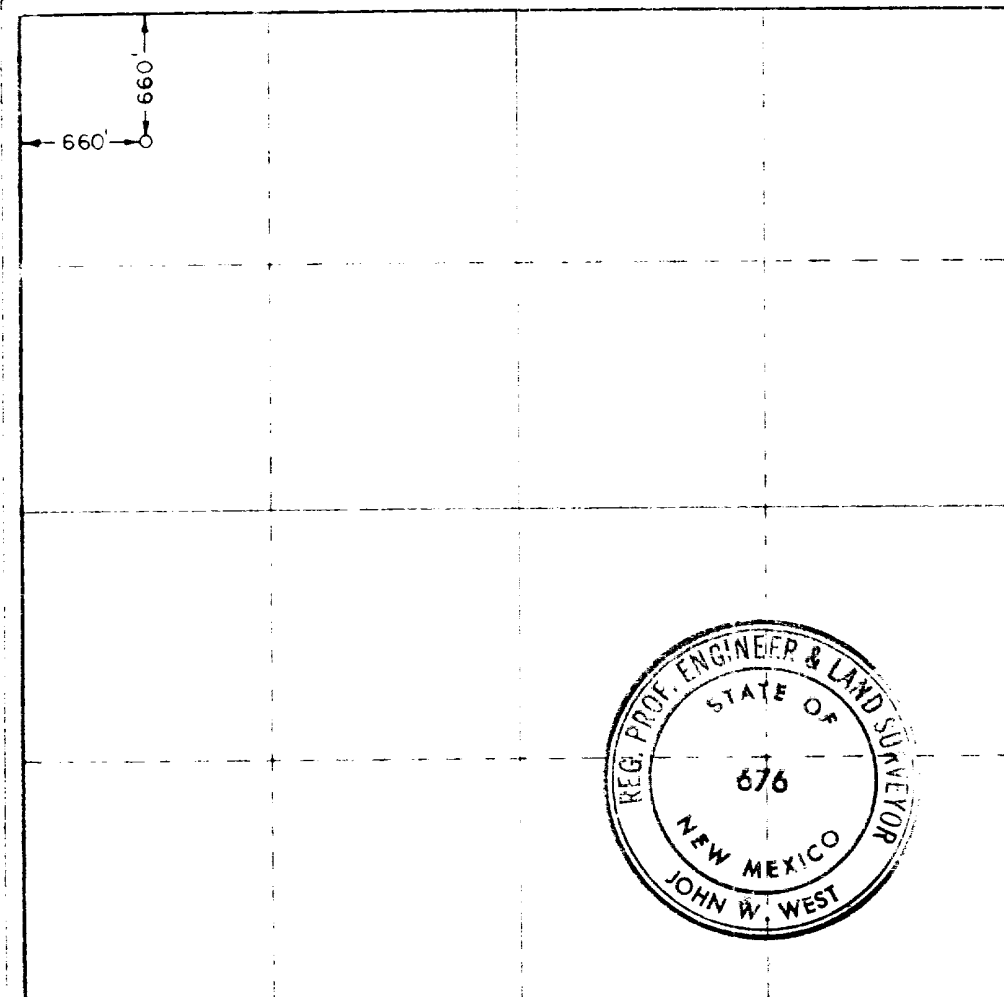
Operator MIDWEST OIL CORPORATION			Lease FEDERAL "Q"		Well No. 1
Section Letter D	Section 25	Township 25 SOUTH	Range 25 EAST	County EDDY	
Actual Well Location of Well:					
660		feet from the	NORTH	line and	660
				feet from the	WEST
Ground Level Elev. 3515.4	Producing Formation Delaware Sand		Flow Wildcat		Dedicated Acreage: 40

1. Outline the acreage dedicated to the subject well by colored pencil or hatchure marks on the plat below.
2. If more than one lease is dedicated to the well, outline each and identify the ownership thereof (both as to working interest and royalty)
3. If more than one lease of different ownership is dedicated to the well, have the interests of all owners been consolidated by communitization, unitization, force-pooling, etc?

☐ Yes ☐ No If answer is "yes" type of consolidation _____

If answer is "no" list the owners and tract descriptions which have actually been consolidated. (Use reverse side of this form if necessary) _____

No allowable will be assigned to the well until all interests have been consolidated (by communitization, unitization, forced-pooling, or otherwise) or until a non-standard unit, eliminating such interests, has been approved by the Commission.



CERTIFICATION

I hereby certify that the information contained herein is true and complete to the best of my knowledge and belief.

Bonnie Husband

Bonnie Husband

Position

Production Clerk

Company

Midwest Oil Corporation

Date

4-2-74

RECEIVED
APR 5 1974

I hereby certify that the well location shown on this plat was plotted from field notes of actual survey made by me or under my supervision, and that the same is true to the best of my knowledge and belief.

Date Surveyed

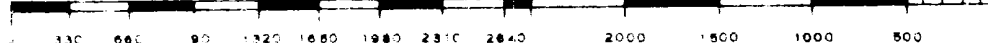
MARCH 30, 1974

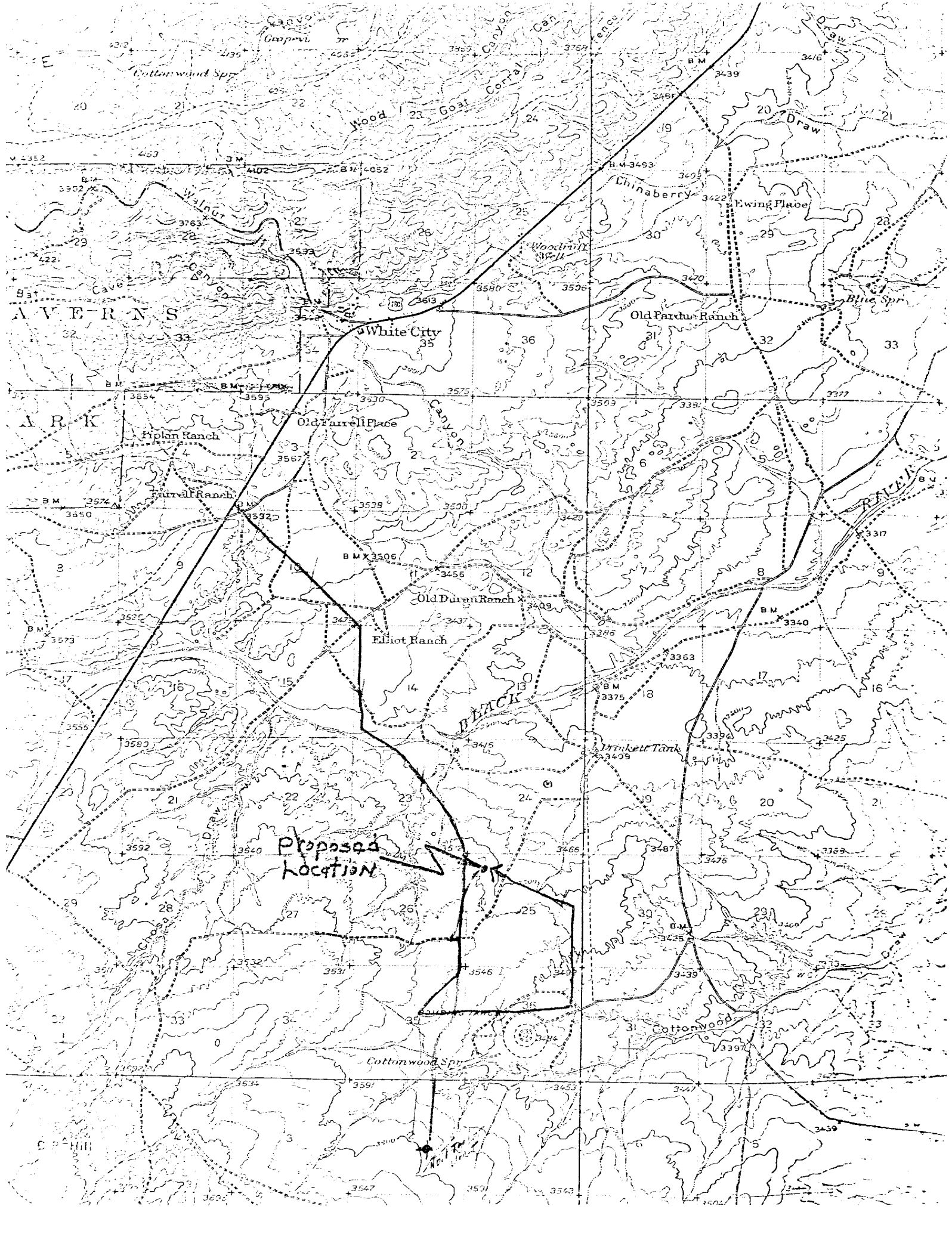
Registered Professional Engineer and Land Surveyor

John W. West

Certificate No.

676



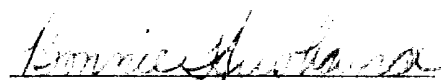


SURFACE DEVELOPMENT PLAN

Midwest Oil Corporation
Federal "Q" No. 1
660' FNL & 660' FWL
Sec. 25, T-25S, R-25E
Eddy County, New Mexico

1. Existing roads - See attached map.
2. Planned access roads - See attached plat.
3. Location of wells - No. 1 Target Unit approximately 2½ miles southwest, Inexco White City Fed 1 mile northwest & #1 Cottonwood Spring Unit 2½ miles Northeast.
4. Lateral roads to well locations - See attached map.
5. Tank batteries and flow lines will be located on well pad.
6. Water supply - Water to be supplied by trucks. (Washington Ranch).
7. Waste disposal - All paper, metal, wood and other waste material will be collected and disposed of in a waste collection pit located northeast of the pad's edge. The waste pit will be covered when the drilling and completion operation is finished.
8. Produced brine water will be collected in a metal tank & trucked to the nearest available salt water disposal facility.
9. Produced oil will be sold through the best available market in the area.
10. Location layout - See attached plat.
11. Restoration of surface - Reserve pits will be levelled & smoothed after drying. The area will be cleaned of all waste & restored as nearly as possible to its original contour.
12. Blowout preventer equipment will be installed when surface casing is set.

Well to be drilled with water.


Bonnie Husband

Production Clerk

RECEIVED
APR 1974
U. S. GEOLOGICAL SURVEY
ARTESIA, NEW MEXICO

PAD DESIGN
#1 Federal "Q"

