

UNITED STATES
DEPARTMENT OF THE INTERIOR

GEOLOGICAL SURVEY

APPLICATION FOR PERMIT TO DRILL, DEEPEN, OR PLUG BACK

1A. TYPE OF WORK

DRILL ☒DEEPEN ☐PLUG BACK ☐

B. TYPE OF WELL

OIL
WELL ☒GAS
WELL ☐OTHER ☐SINGLE
ZONE ☐MULTIPLE
ZONE ☐

2. NAME OF OPERATOR

Natural Gas Exploration Corporation

3. ADDRESS OF OPERATOR

620 Commercial Bank Tower Midland, Texas 79701

4. LOCATION OF WELL (Report location clearly and in accordance with any State requirements.)

At surface
2180
1980' FNL 1980' FEL Section 29
At proposed prod. zone

14. DISTANCE IN MILES AND DIRECTION FROM NEAREST TOWN OR POST OFFICE*

16 miles South Whites City

15. DISTANCE FROM PROPOSED*

LOCATION TO NEAREST
PROPERTY OR LEASE LINE, FT.
(Also to nearest drig. unit line, if any) 1,980'

16. NO. OF ACRES IN LEASE

640

17. NO. OF ACRES ASSIGNED
TO THIS WELL

40

18. DISTANCE FROM PROPOSED LOCATION*

TO NEAREST WELL, DRILLING, COMPLETED,
OR APPLIED FOR, ON THIS LEASE, FT. 1-1/2 miles

19. PROPOSED DEPTH

1,400

20. ROTARY OR CABLE TOOLS

Rotary

21. ELEVATIONS (Show whether DF, RT, GR, etc.)

Please refer to Surveyor's Plat

22. APPROX. DATE WORK WILL START*

May 29, 1974

23.

PROPOSED CASING AND CEMENTING PROGRAM

SIZE OF HOLE	SIZE OF CASING	WEIGHT PER FOOT	SETTING DEPTH	QUANTITY OF CEMENT
6-5/8	4-1/2	9.5	1,400	200 sacks
8-5/8	7	23		
6	4-1/2	9.5		100 sacks

It is proposed to drill a 4-3/4 inch hole to approximately 1,400 feet at which depth the Delaware Formation can be adequately tested. At total depth, if well tests appear productive, then the 4-3/4 inch hole will be reamed to 6-5/8 inch and 4-1/2 inch production casing will be run with Cement sufficient to return to surface.

* If water is encountered or if loss of circulation occurs while drilling the 4-3/4 inch hole, the hole will then be reamed to 8-5/8 inch and 7 inch intermediate casing will be run with cement sufficient to return to surface. After waiting on cement for a minimum of 24 hours, the casing will be pressure tested to 1,000 PSI. From the setting depth of the intermediate casing a 4-3/4 inch hole will be drilled to approximately 1,400 feet. If the well at total depth appears productive the 4-3/4 inch hole will be reamed to 6 inch and 4-1/2 inch production casing will be run with cement sufficient to return approximately 100 feet into the casing.

Any apparent water zones, if any, will be duly noted and reported.

IN ABOVE SPACE DESCRIBE PROPOSED PROGRAM: If proposal is to deepen or plug back, give data on present productive zone and proposed new productive zone. If proposal is to drill or deepen directionally, give pertinent data on subsurface locations and measured and true vertical depths. Give blowout preventer program, if any.

24.

SIGNED

Ronnie Saunders

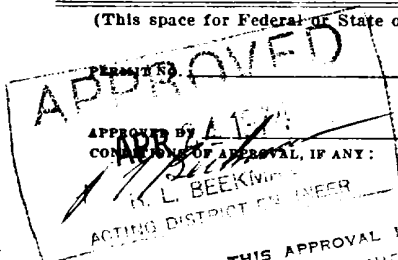
TITLE

Treasurer

DATE

April 3, 1974

(This space for Federal or State office use)



APPROVAL DATE

TITLE

DATE

RECEIVED

THIS APPROVAL IS RESCINDED IF OPERATIONS
ARE NOT COMMENCED WITHIN 3 MONTHS.
EXPIRES JUL 24 1974

*See Instructions On Reverse Side

APR 25 1974

NEW MEXICO OIL CONSERVATION COMMISSION
WELL LOCATION AND ACREAGE DEDICATION PLAT

Form C-102
Supersedes C-128
Effective 1-1-65

All distances must be from the outer boundaries of the Section

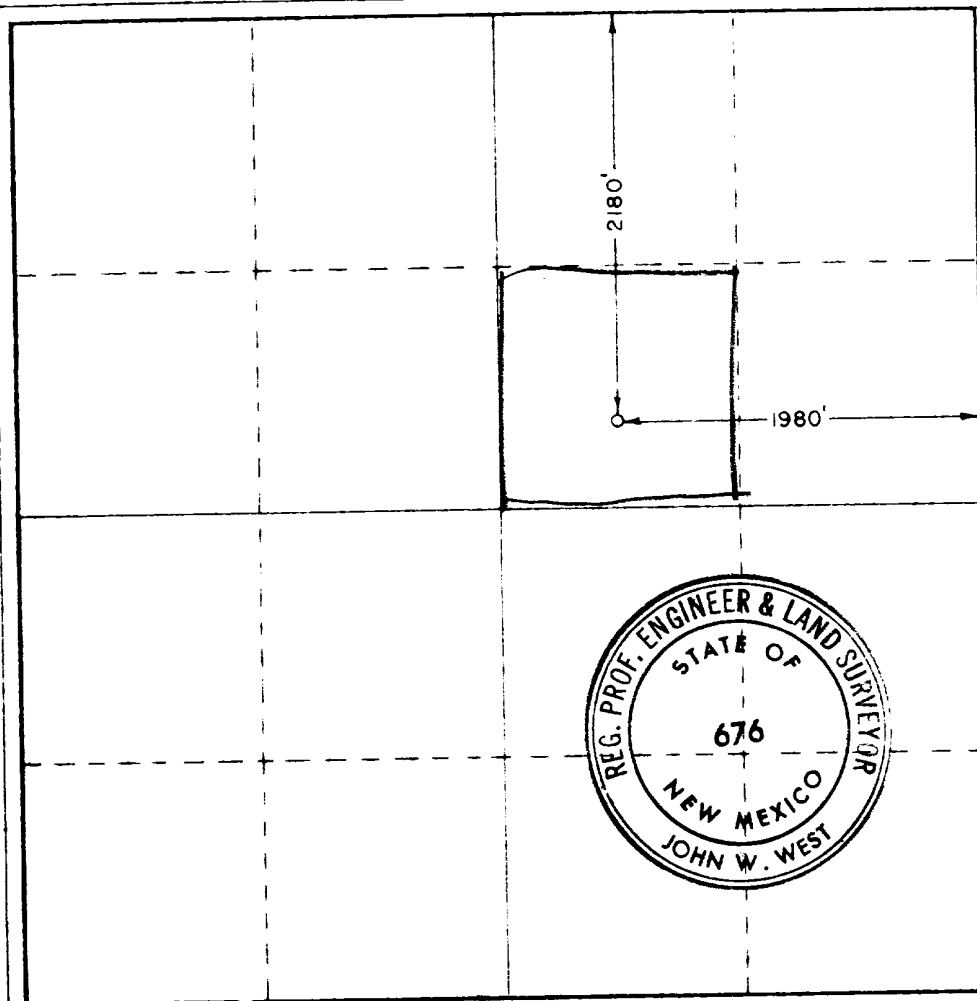
Operator NATURAL GAS EXPLORATION CORPORATION			Lease DOROTHY J. SCRIBNER FEDERAL		Well No. 1
Unit Letter G	Section 29	Township 26 SOUTH	Range 25 EAST	County EDDY	
Actual Footage Location of Well: 2180 feet from the NORTH line and 1980 feet from the EAST line					
Ground Level Elev. 3759.6	Producing Formation	Foot <i>Wildcat</i>		Dedicated Acreage: 40 Acres	

1. Outline the acreage dedicated to the subject well by colored pencil or hatchure marks on the plat below.
2. If more than one lease is dedicated to the well, outline each and identify the ownership thereof (both as to working interest and royalty).
3. If more than one lease of different ownership is dedicated to the well, have the interests of all owners been consolidated by communitization, unitization, force-pooling, etc?

☐ Yes ☐ No If answer is "yes," type of consolidation _____

If answer is "no," list the owners and tract descriptions which have actually been consolidated. (Use reverse side of this form if necessary.) _____

No allowable will be assigned to the well until all interests have been consolidated (by communitization, unitization, force-pooling, or otherwise) or until a non-standard unit, eliminating such interests, has been approved by the Commission.



CERTIFICATION

I hereby certify that the information contained herein is true and complete to the best of my knowledge and belief.

Name
Ronnie Sanders
Position
Treasurer
Company
Natural Gas Exploration Corp
Date
4-16-74

I hereby certify that the well location shown on this plat as plotted from field notes of actual surveys made by me or under my supervision, and that the same is true and correct to the best of my knowledge and belief.

RECEIVED
APR 18 1974
U.S. GEOLOGICAL SURVEY
ARTESIA, NEW MEXICO

Date Surveyed
April 9, 1974
Registered Professional Engineer and/or Land Surveyor
John W. West
Certificate No. **676**

