

NEW MEXICO OIL CONSERVATION COMMISSION
WELL LOCATION AND ACREAGE DEDICATION PLAT

Form O-100
Supersedes O-100A
Effective 1-1-73

All distances must be from the outer boundaries of the Section

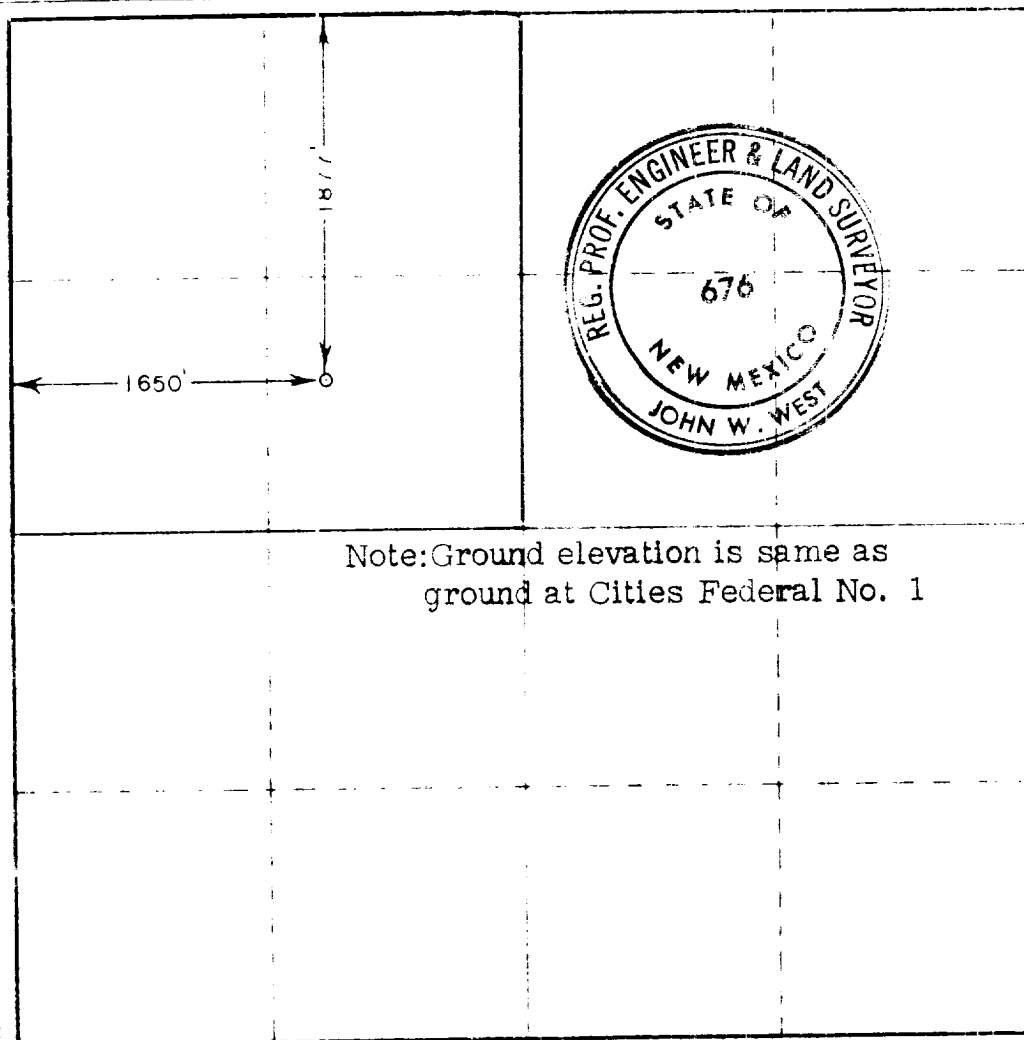
Owner BLACK RIVER CORP.		Lease Cities Federal		Acres 4	
Section F	Section 34	Township 25 South	Range 24 East	County Eddy	
Well Location (Section, Township, Range, County)					
1877		feet from the North		feet from the West	
1650		feet from the East		feet from the South	

- Outline the acreage dedicated to the subject well by colored pencil or hatchure marks on the plat below.
- If more than one lease is dedicated to the well, outline each and identify the ownership thereof (both as to working interest and royalty).
- If more than one lease of different ownership is dedicated to the well, have the interests of all owners been consolidated by communitization, unitization, force-pooling, etc?

☐ Yes ☐ No If answer is "yes," type of consolidation _____

If answer is "no," list the owners and tract descriptions which have actually been consolidated. (Use reverse side of this form if necessary.) _____

No allowable will be assigned to the well until all interests have been consolidated (by communitization, unitization, forced-pooling, or otherwise) or until a non-standard unit, eliminating such interests, has been approved by the Commission.



CERTIFICATION

I hereby certify that the information contained herein is true and complete to the best of my knowledge and belief.

Wm. J. Papp
Exec. Vice President

Black River Corporation

May 16, 1974

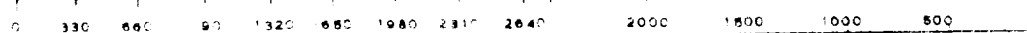
RECEIVED
MAY 17 1974

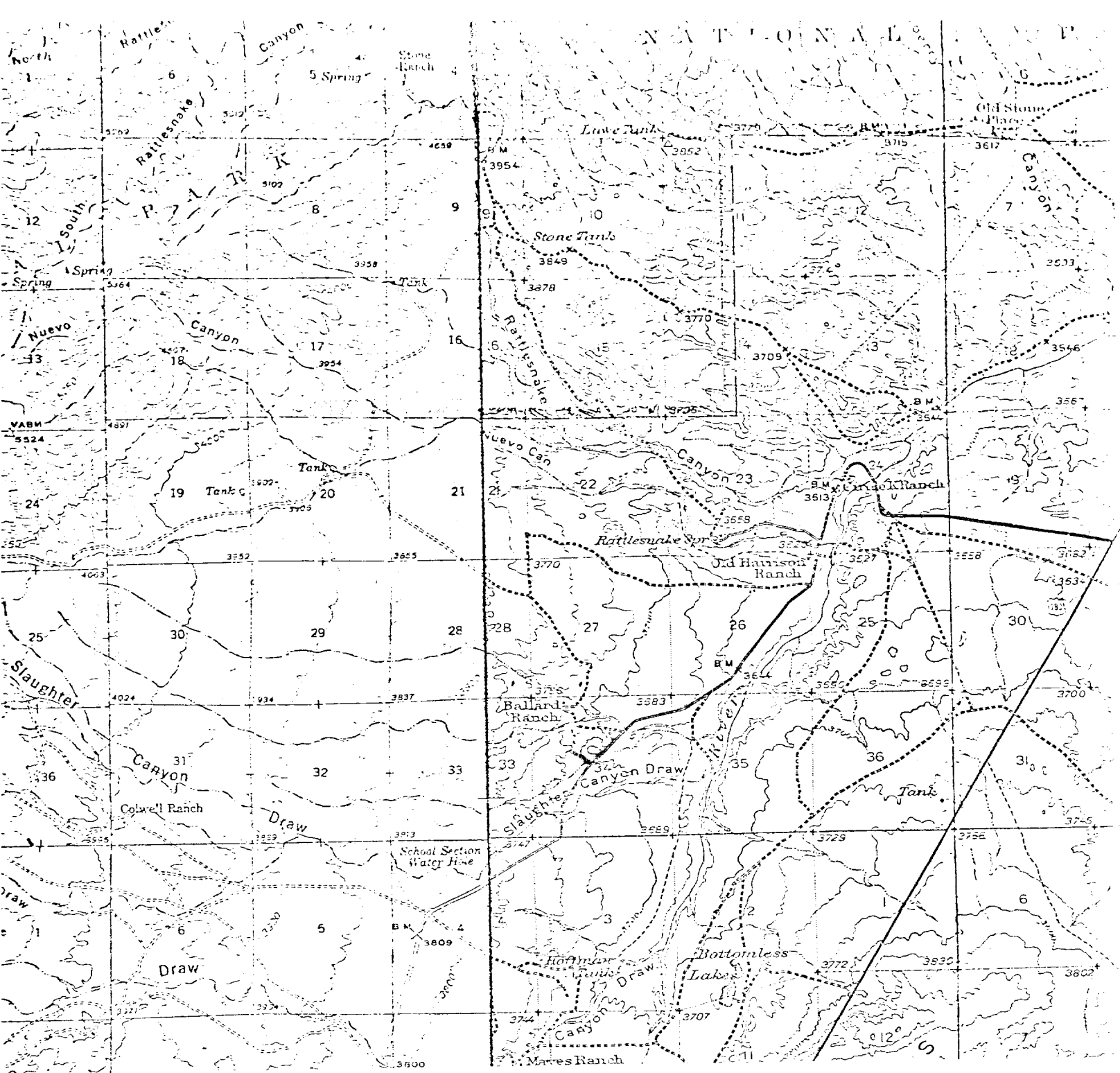
I hereby certify that the well location shown on this plat was located from reliable data of the surveys made by me or under my supervision and is true to the best of my knowledge and belief.

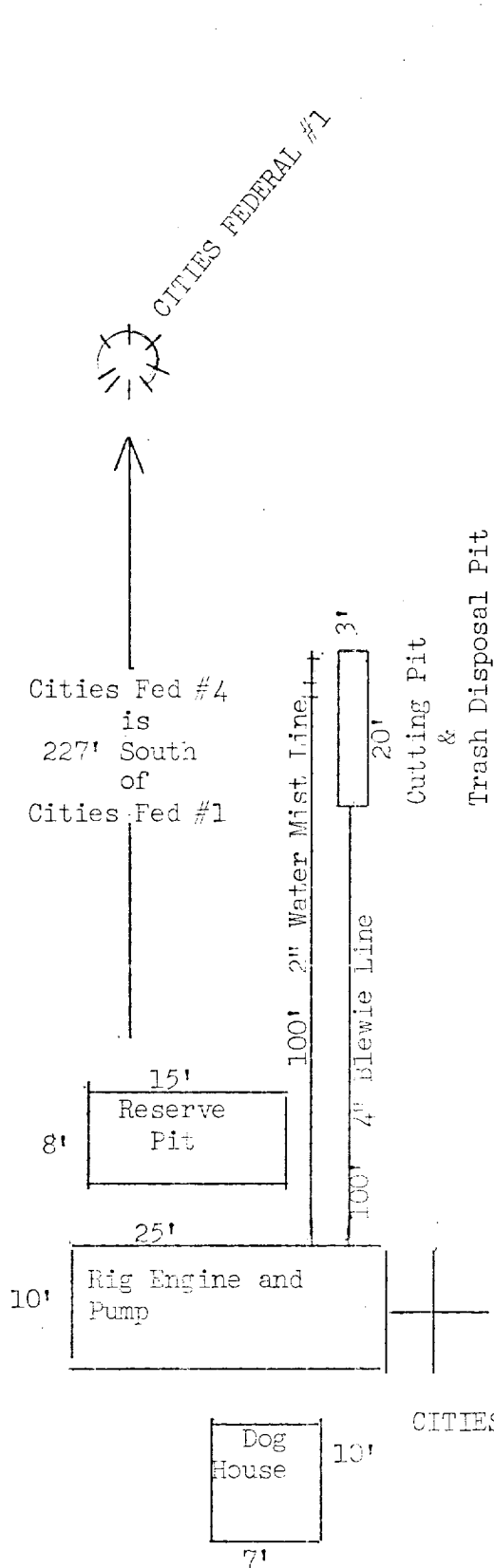
May 11, 1974

Registered Professional Surveyor

John W. West
676







RECEIVED
MAY 1974
U. S. GEOLOGICAL SURVEY
ARTESIAN, NEW MEXICO

BLACK RIVER CORPORATION
Surface Use Development Plan
Well - Cities Federal No. 4
Date - June 1, 1974

1877' FWL 1650' FWL Section 34:
T-25-S, R-24-E, Eddy County, New Mexico