

UNITED STATES
DEPARTMENT OF THE INTERIOR
GEOLOGICAL SURVEY

Copy to SF
30-015-21287

APPLICATION FOR PERMIT TO DRILL, DEEPEN, OR PLUG BACK

1a. TYPE OF WORK
DRILL ☒ DEEPEN ☐ PLUG BACK ☐

b. TYPE OF WELL
OIL WELL ☐ GAS WELL ☒ OTHER ☐ SINGLE ZONE ☐ MULTIPLE ZONE ☐

2. NAME OF OPERATOR
BLACK RIVER CORPORATION

3. ADDRESS OF OPERATOR
620 Commercial Bank Tower, Midland, Texas 79701

4. LOCATION OF WELL (Report location clearly and in accordance with any State requirements.)*
At surface 660' FNL 660' FWL Section 3
At proposed prod. zone

14. DISTANCE IN MILES AND DIRECTION FROM NEAREST TOWN OR POST OFFICE*
Approximately 12 miles southwest White's City, New Mexico

16. DISTANCE FROM PROPOSED* LOCATION TO NEAREST PROPERTY OR LEASE LINE, FT. (Also to nearest drlg. unit line, if any) 660'
18. DISTANCE FROM PROPOSED LOCATION* TO NEAREST WELL, DRILLING, COMPLETED, OR APPLIED FOR, ON THIS LEASE, FT. 1373'
16. NO. OF ACRES IN LEASE 508.14
17. NO. OF ACRES ASSIGNED TO THIS WELL 160
19. PROPOSED DEPTH 1750' Delaware
20. ROTARY OR CABLE TOOLS Rotary
22. APPROX. DATE WORK WILL START* August 15, 1974

5. LEASE DESIGNATION AND SERIAL NO. NM-0525452A
6. IF INDIAN, ALLOTTEE OR TRIBE NAME
7. UNIT AGREEMENT NAME
8. FARM OR LEASE NAME Cities - 3 - Federal
9. WELL NO. #5
10. FIELD AND POOL, OR WILDCAT Wildcat
11. SEC., T., R., M., OR BLK. AND SURVEY OR AREA Sec. 3: T-26-S, R-24-E
12. COUNTY OR PARISH Eddy
13. STATE New Mexico

PROPOSED CASING AND CEMENTING PROGRAM

SIZE OF HOLE	SIZE OF CASING	WEIGHT PER FOOT	SETTING DEPTH	QUANTITY OF CEMENT
11"	9-5/8"	30#	300'	100 Sx
8-3/4"	7"	23#	1,300	200 Sx

We propose to drill an 11" hole to approximately 300'. After setting 9-5/8" casing and circulating cement to surface, will then W.O.C. a minimum of twenty-four (24) hours. From this point will drill an 8-3/4" hole to 1300' with fresh water. At 1300' 7" casing will be run and cement sufficient to return to 50' above top of the Delaware. After W.O.C., twenty four (24) hours, then gas drill to T.D.

RECEIVED RECEIVED

JUL 15 1974

JUL - 1 1974

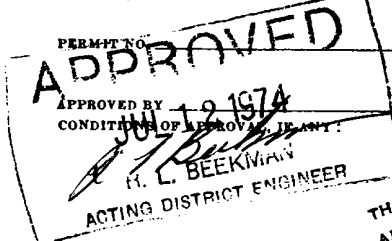
O. C. C.
ARTESIA, OFFICE

U.S. GEOLOGICAL SURVEY
ARTESIA, NEW MEXICO

IN ABOVE SPACE DESCRIBE PROPOSED PROGRAM: If proposal is to deepen or plug back, give data on present productive zone and proposed new productive zone. If proposal is to drill or deepen directionally, give pertinent data on subsurface locations and measured and true vertical depths. Give blowout preventer program, if any.

24. SIGNED Ronnie Lowder TITLE Vice President DATE June 26, 1974

(This space for Federal or State office use)



APPROVAL DATE
THIS APPROVAL IS RESCINDED IF OPERATIONS ARE NOT COMMENCED WITHIN 3 MONTHS.
EXPIRES OCT 12 1974
See Instructions On Reverse Side

NEW MEXICO OIL CONSERVATION COMMISSION
WELL LOCATION AND ACREAGE DEDICATION PLAT

Form C-182
Supersedes C-128
Effective 1-1-65

All distances must be from the outer boundaries of the Section.

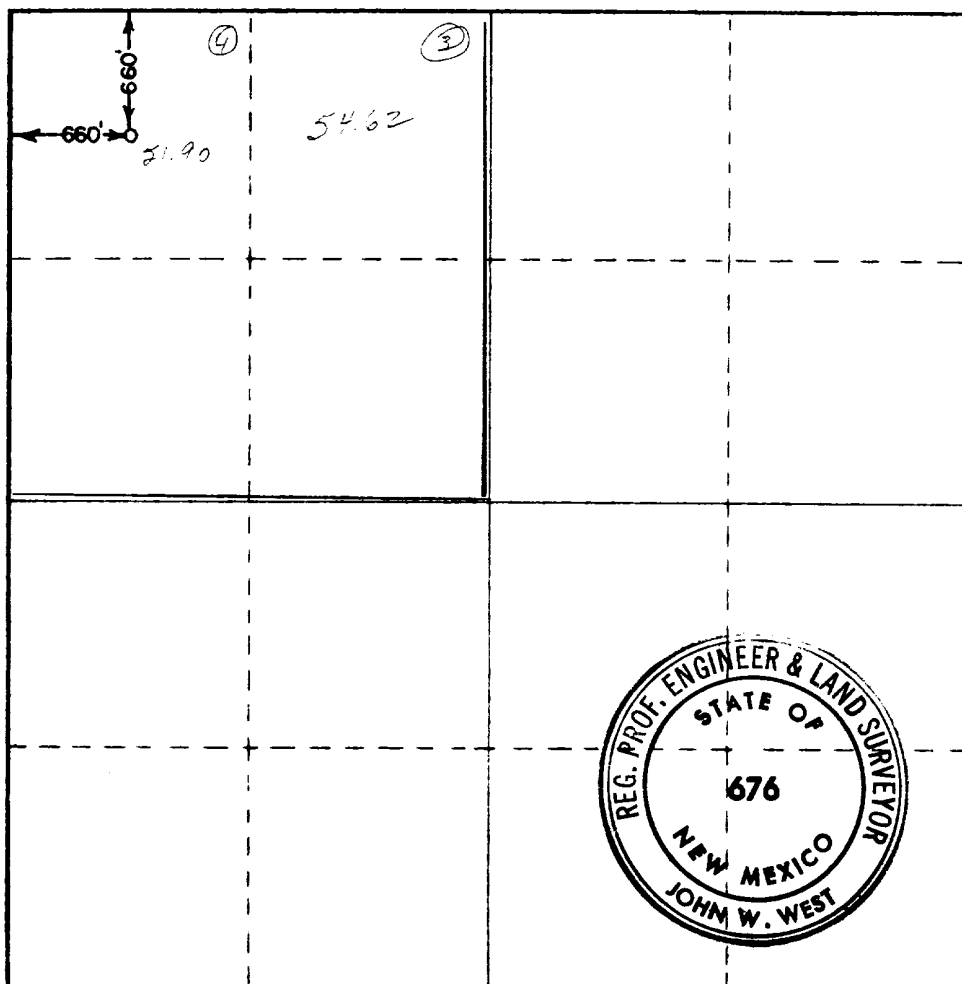
Operator BLACK RIVER CORP.			Lease Cities 3 Federal		Well No. 5
Unit Letter D	Section 3	Township 26 South	Range 24 East	County ARTESIA	
Actual Footage Location of Well: 660 feet from the North line and 660 feet from the West line					
Ground Level Elev. 3750.3	Producing Formation Delaware	Pool Und. Washington Ranch Rd.	Dedicated Acreage: 160 ⁵ / ₈ Acres		

- Outline the acreage dedicated to the subject well by colored pencil or hachure marks on the plat below.
- If more than one lease is dedicated to the well, outline each and identify the ownership thereof (both as to working interest and royalty).
- If more than one lease of different ownership is dedicated to the well, have the interests of all owners been consolidated by communitization, unitization, force-pooling, etc?

☐ Yes ☐ No If answer is "yes," type of consolidation _____

If answer is "no," list the owners and tract descriptions which have actually been consolidated. (Use reverse side of this form if necessary.) _____

No allowable will be assigned to the well until all interests have been consolidated (by communitization, unitization, forced-pooling, or otherwise) or until a non-standard unit, eliminating such interests, has been approved by the Commission.



CERTIFICATION

I hereby certify that the information contained herein is true and complete to the best of my knowledge and belief.

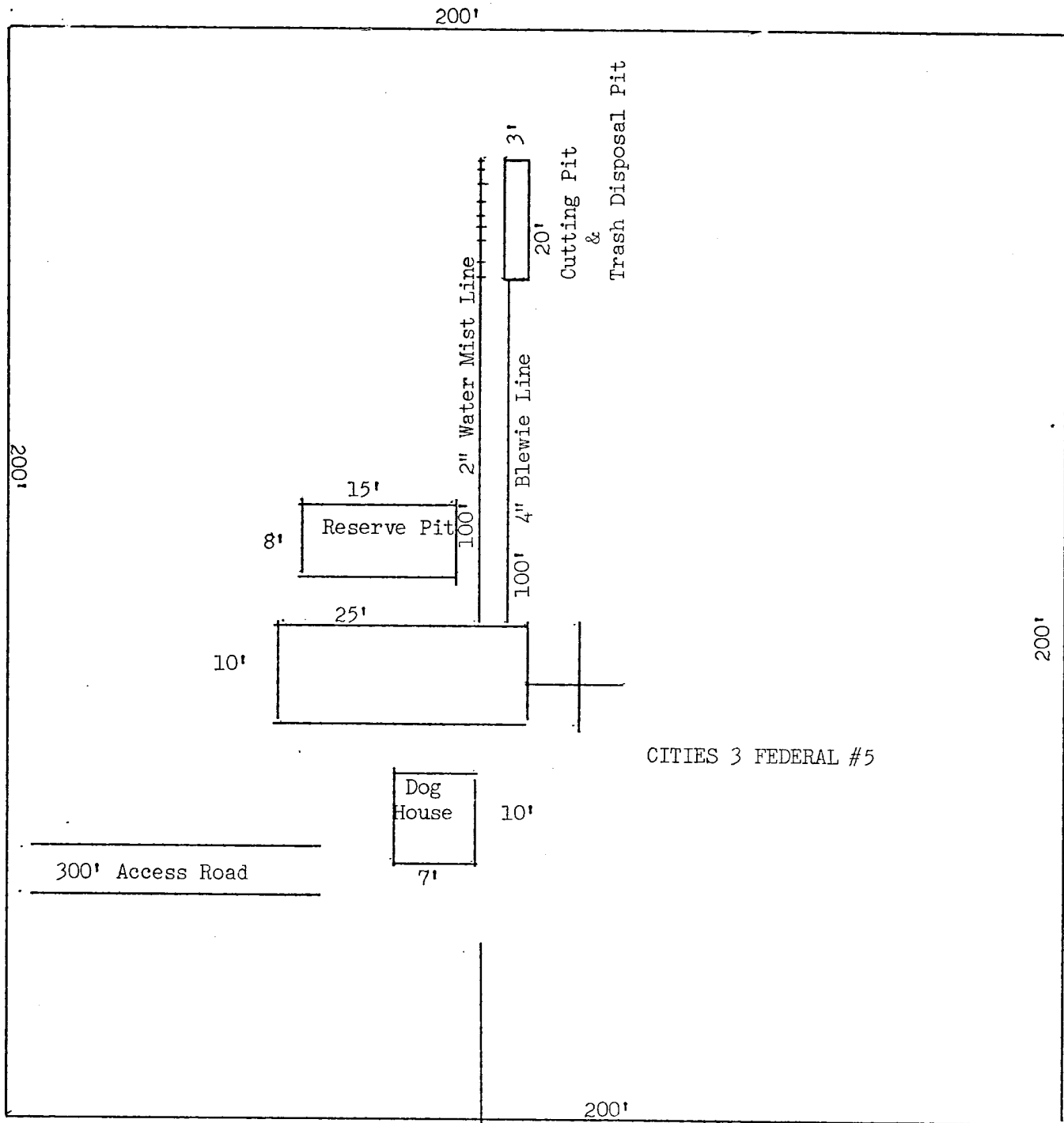
Name
Ronnie Lowder
Position
Vice President
Company
BLACK RIVER CORPORATION
Date
6-26-74

RECEIVED
I hereby certify that the well location shown on this plat was plotted from field notes of actual survey made by me or under my supervision, and that the same is true and correct to the best of my knowledge and belief.
JOHN W. WEST
U.S. GEOLOGICAL SURVEY
ARTESIA, NEW MEXICO

Date Surveyed
May 11, 1974

Registered Professional Engineer and/or Land Surveyor

John W. West
Certificate No. **676**



CITIES 3 FEDERAL #5

BLACK RIVER CORPORATION
Surface Use Development Plan
Well - Cities 3 Federal No. 5
Date - August 15, 1974

660' FNL 660' FWL
Section 3: T-26-S R-24-E
Eddy County, New Mexico

CITIES 3 FEDERAL NO. 5
is approximately 1373'
north of Cities 3 Federal
No. 4.

