

UNITED STATES
DEPARTMENT OF THE INTERIOR
GEOLOGICAL SURVEY

30-015-21349

APPLICATION FOR PERMIT TO DRILL, DEEPEN, OR PLUG BACK

1a. TYPE OF WORK

DRILL ☒DEEPEN ☐PLUG BACK ☐

b. TYPE OF WELL

OIL
WELL ☒GAS
WELL ☐

OTHER

SINGLE
ZONE ☒MULTIPLE
ZONE ☐

2. NAME OF OPERATOR

Pearson-Sibert Oil Co. of Texas

3. ADDRESS OF OPERATOR

901 W. Missouri Ave., Midland, Texas

4. LOCATION OF WELL (Report location clearly and in accordance with any State requirements.)*

At surface 660' FNL & 1980' FWL (NE/4 of NW/4) Section 4,
T-25-S, R-26-E, NMPM

At proposed prod. zone

14. DISTANCE IN MILES AND DIRECTION FROM NEAREST TOWN OR POST OFFICE*

4 miles southwest of Black River, New Mexico

15. DISTANCE FROM PROPOSED*

LOCATION TO NEAREST
PROPERTY OR LEASE LINE, FT.
(Also to nearest drlg. unit line, if any)

660'

16. NO. OF ACRES IN LEASE

398.66

17. NO. OF ACRES ASSIGNED
TO THIS WELL

40

18. DISTANCE FROM PROPOSED LOCATION*
TO NEAREST WELL, DRILLING, COMPLETED,
OR APPLIED FOR, ON THIS LEASE, FT.

None

19. PROPOSED DEPTH

1900'

20. ROTARY OR CABLE TOOLS

Cable Tools

21. ELEVATIONS (Show whether DF, RT, GR, etc.)

3362' GR (Est.)

22. APPROX. DATE WORK WILL START*

8-21-74

23.

PROPOSED CASING AND CEMENTING PROGRAM

RECEIVED

SIZE OF HOLE	SIZE OF CASING	WEIGHT PER FOOT	SETTING DEPTH	QUANTITY OF CEMENT
15"	12-3/4"	33#	450'	Circulate
8-1/4"	7"	20#	1900'	200 sacks

O. C. C.
ARTESIA, OFFICE

We propose to test the Ramsey Sand Section of the Upper Delaware Formation.

"Development Plan for Surface Use" included and made part of this application.

AMENDED to show cable tools and casing and hole size changes.RECEIVED
AUG 28 1974
U.S. GEOLOGICAL SURVEY
ARTESIA, NEW MEXICO

IN ABOVE SPACE DESCRIBE PROPOSED PROGRAM: If proposal is to deepen or plug back, give data on present productive zone and proposed new productive zone. If proposal is to drill or deepen directionally, give pertinent data on subsurface locations and measured and true vertical depths. Give blowout preventer program, if any.

24.

SIGNED

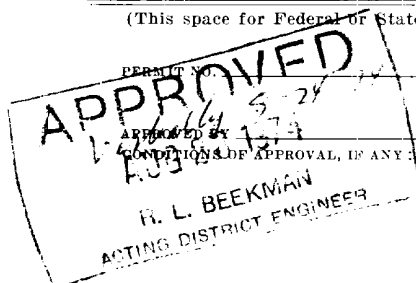
TITLE

Vice President

DATE

August 22, 1974

(This space for Federal or State office use)



APPROVAL DATE

TITLE

DATE

NOV 25 1974

*See Instructions On Reverse Side

Instructions

General: This form is designed for submitting proposals to perform certain well operations, as indicated, on all types of lands and leases for appropriate action by either a Federal or a State agency, or both, pursuant to applicable Federal and/or State laws and regulations. Any necessary special instructions concerning the use of this form and the number of copies to be submitted, particularly with regard to local, area, or regional procedures and practices, either are shown below or will be issued by, or may be obtained from, the local Federal and/or State office.

Item 1: If the proposal is to redrill to the same reservoir at a different subsurface location or to a new reservoir, use this form with appropriate notations. Consult applicable State or Federal regulations concerning subsequent work proposals or reports on the well.

Item 4: If there are no applicable State requirements, locations on Federal or Indian land should be described in accordance with Federal requirements. Consult local State or Federal office for specific instructions.

Item 14: Needed only when location of well cannot readily be found by road from the land or lease description. A plat, or plats, separate or on this reverse side, showing the roads to, and the surveyed location of, the well, and any other required information, should be furnished when required by Federal or State agency offices.

Items 15 and 18: If well is to be, or has been directionally drilled, give distances for subsurface location of hole in any present or objective production zone.

Item 22: Consult applicable Federal or State regulations, or appropriate officials, concerning approval of the proposal before operations are started.

WELL LOCATION AND ACREAGE DEDICATION PLAT

Form C-102
Supersedes C-128
Effective 1-1-65

All distances must be from the outer boundaries of the Section.

Operator Pearson-Sibert Oil Co. of Texas			Lease Sibert-Federal		Well No. 1
Unit Letter C	Section 4	Township 25-S	Range 26-E	County Eddy	
Actual Footage Location of Well: 660 feet from the North line and 1980 feet from the West line					
Ground Level Elev.	Producing Formation Delaware Sand		Pool Wildcat		Dedicated Acreage: 40 Acres

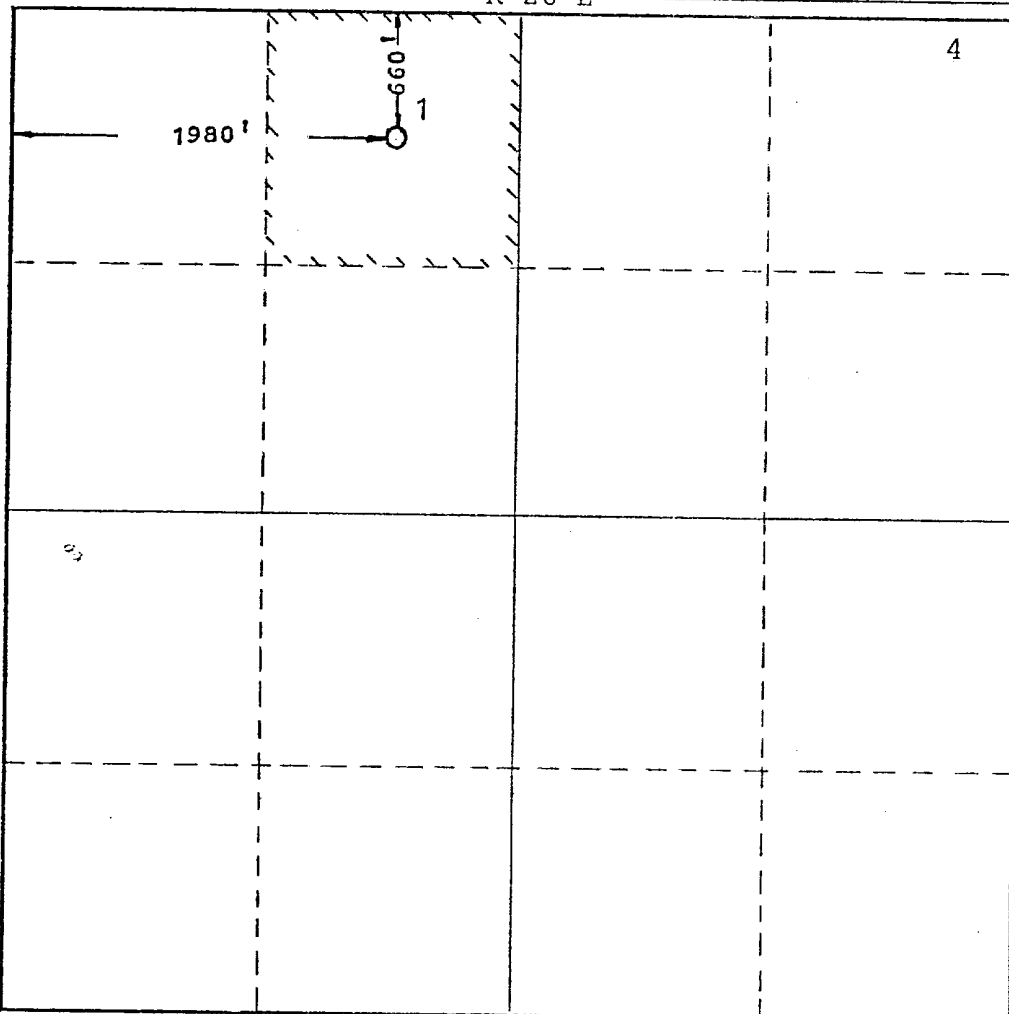
1. Outline the acreage dedicated to the subject well by colored pencil or hachure marks on the plat below.
2. If more than one lease is dedicated to the well, outline each and identify the ownership thereof (both as to working interest and royalty).
3. If more than one lease of different ownership is dedicated to the well, have the interests of all owners been consolidated by communitization, unitization, force-pooling, etc?

☐ Yes ☐ No If answer is "yes," type of consolidation _____

If answer is "no," list the owners and tract descriptions which have actually been consolidated. (Use reverse side of this form if necessary.) _____

No allowable will be assigned to the well until all interests have been consolidated (by communitization, unitization, forced-pooling, or otherwise) or until a non-standard unit, eliminating such interests, has been approved by the Commission.

R 26-E



CERTIFICATION

I hereby certify that the information contained herein is true and complete to the best of my knowledge and belief.

Ed D. Fitting
Name
Vice President
Position
Pearson-Sibert Oil Co. of Texas
Company
August 8, 1974
Date

RECEIVED

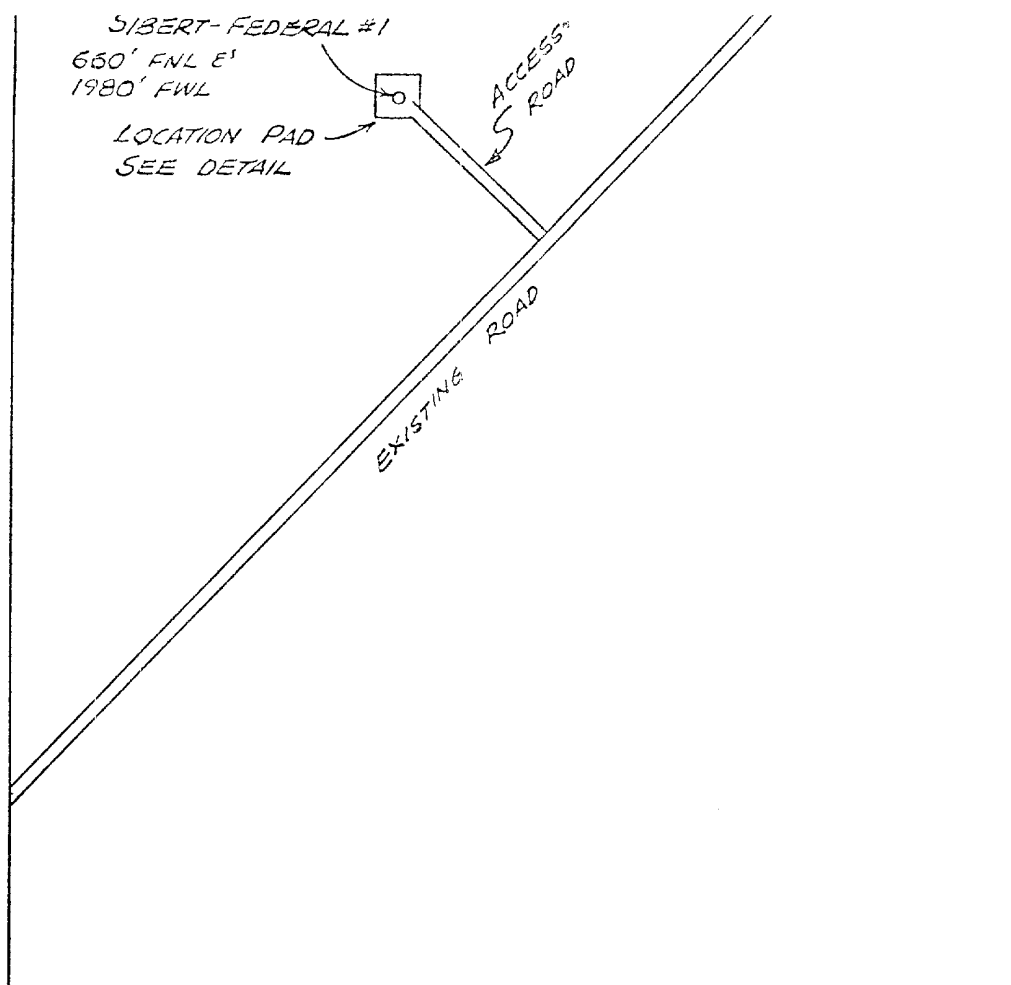
I hereby certify that the well location shown on this plat was plotted from field notes of actual surveys made by me or under my supervision, and that the same is true and correct to the best of my knowledge and belief.

Date Surveyed
August 7, 1974
Registered Professional Engineer
and/or Land Surveyor

Mal E. Howell
Certificate No.

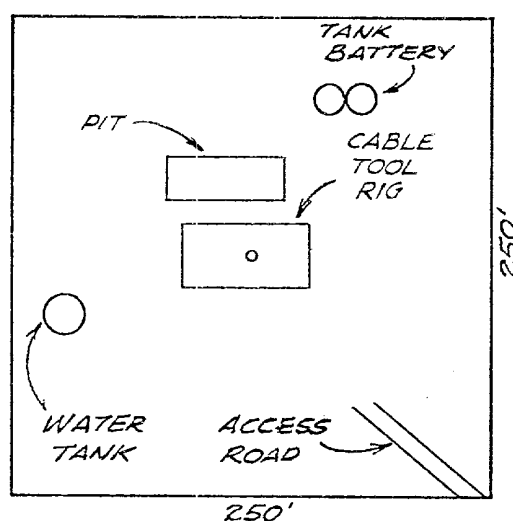
2189

T
25
S



SECTION 4, T-25-S, R-26-E, EDDY CO.,
NEW MEXICO

LOCATION PAD DETAIL



Water Supply - To be hauled.
Waste Containers for accumulation of waste will be buried
and covered up.
No Camp Location.
No Airstrips
Pits dried out, location cleaned up, and to be restored to natural
state as near as possible.
Well to be drilled with Cable Tools.

DEVELOPMENT PLAN

PEARSON-SIBERT OIL CO. OF TEXAS