

NEW MEXICO OIL CONSERVATION COMMISSION
WELL LOCATION AND ACREAGE DEDICATION PLAT

Copy to SF
Form C-102
Supersedes C-128
Effective 1-1-65

218.9.8
J. West

All distances must be from the outer boundaries of the Section

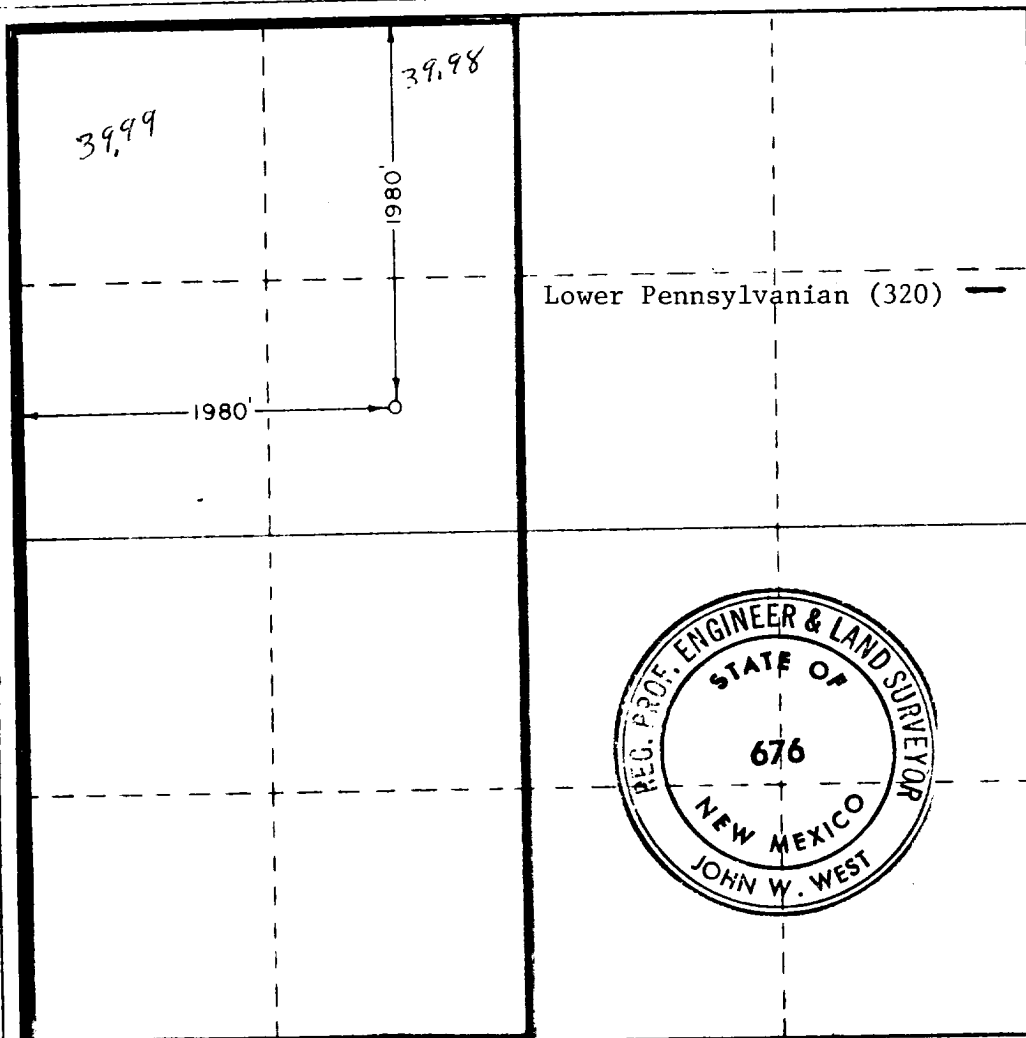
Operator Skelly Oil Company			Lease Todd 2 State		Well No. 1
Unit Letter F	Section 2	Township 24 South	Range 31 East	County Eddy	
Actual Well Location of Wells:					
1980 feet from the North line and		1980 feet from the West line			
Ground Level Elev. 3475.0	Producing Formation Lower Pennsylvanian		Pool Undesignated	Dedicated Acreage: Lower Penn (320) Acres	

- Outline the acreage dedicated to the subject well by colored pencil or hatchure marks on the plat below.
- If more than one lease is dedicated to the well, outline each and identify the ownership thereof (both as to working interest and royalty)
- If more than one lease of different ownership is dedicated to the well, have the interests of all owners been consolidated by communitization, unitization, force-pooling, etc?

☐ Yes ☐ No If answer is "yes," type of consolidation _____

If answer is "no," list the owners and tract descriptions which have actually been consolidated (Use reverse side of this form if necessary.) _____

No allowable will be assigned to the well until all interests have been consolidated (by communitization, unitization, forced-pooling, or otherwise) or until a non-standard unit, eliminating such interests, has been approved by the Commission.



CERTIFICATION

I hereby certify that the information contained herein is true and complete to the best of my knowledge and belief.

D. R. Crow

Name
D. R. Crow

Position
Lead Clerk

Company
Skelly Oil Company

Date
September 17, 1975

I hereby certify that the well location shown on this plat was plotted from field notes of actual surveys made by me or under my supervision, and that the same is true and correct to the best of my knowledge and belief.

Date Surveyed
February 28, 1975

Registered Professional Engineer and/or Land Surveyor

John W. West

Certificate No. **676**

