

NEW MEXICO OIL CONSERVATION COMMISSION
WELL LOCATION AND ACREAGE DEDICATION PLAT

Form C-112
Supersedes C-128
Effective 1-1-65

All distances must be from the outer boundaries of the Section

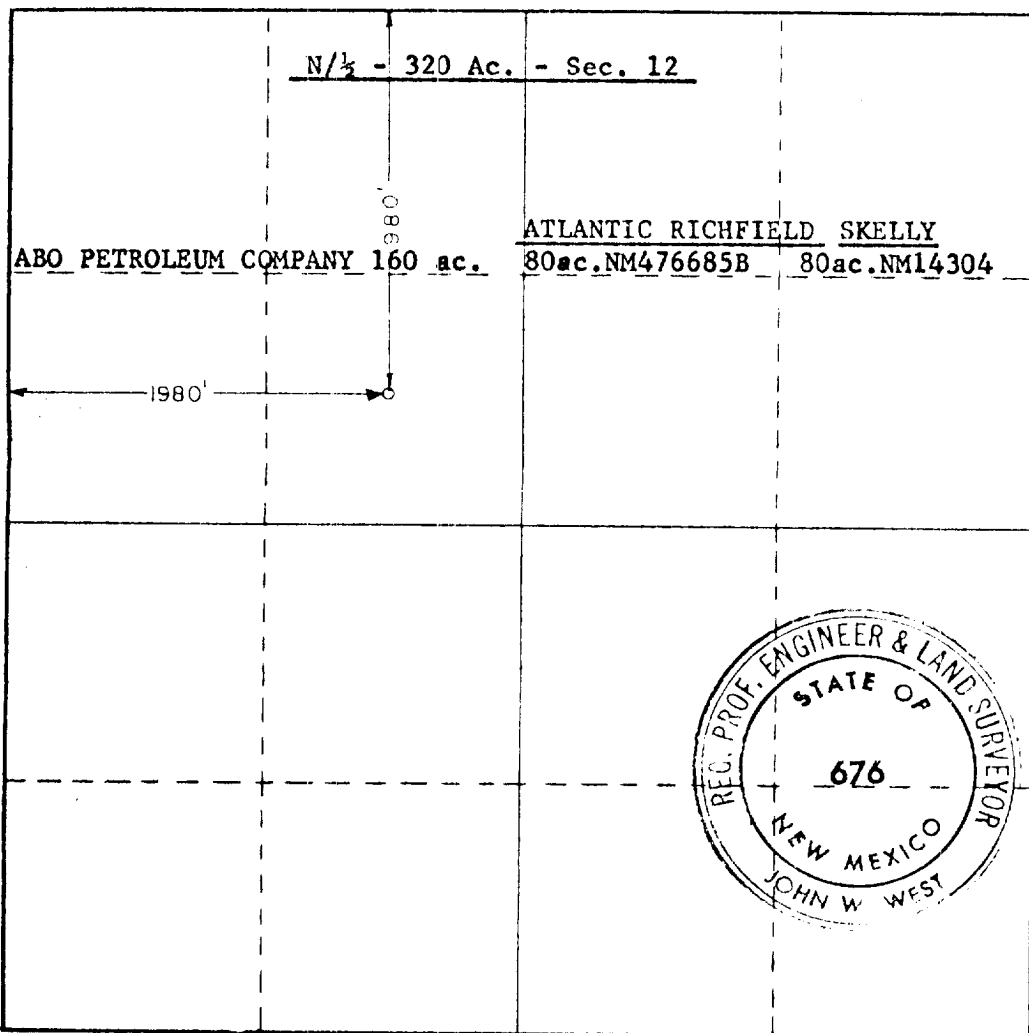
Operator GREAT WESTERN DRILLING CO.		Lease Hay Hollow		Well No. 2
Unit Letter F	Section 12	Township 26 South	Range 27 East	County Eddy
Actual Footage Location of Well:				
1980 feet from the North line and		1980 feet from the West line		
Ground Level Elev. 3176.1	Producing Formation MORROW	Foot WILDCAT	Estimated Acreage 320	

1. Outline the acreage dedicated to the subject well by colored pencil or hachure marks on the plat below.
2. If more than one lease is dedicated to the well, outline each and identify the ownership thereof (both as to working interest and royalty).
3. If more than one lease of different ownership is dedicated to the well, have the interests of all owners been consolidated by communitization, unitization, force-pooling, etc?

☐ Yes ☐ No If answer is "yes," type of consolidation _____

If answer is "no," list the owners and tract descriptions which have actually been consolidated (Use reverse side of this form if necessary.) _____

No allowable will be assigned to the well until all interests have been consolidated (by communitization, unitization, forced-pooling, or otherwise) or until a non-standard unit, eliminating such interests, has been approved by the Commission.



CERTIFICATION

I hereby certify that the information contained herein is true and complete to the best of my knowledge and belief.

John W. West
Signature

General Superintendent

Company
GREAT WESTERN DRILLING CO.

Date
May 7, 1975

RECEIVED

I hereby certify that the well location shown on this plat was plotted from field notes of *U.S. Coast* surveys made by me or under my supervision, and that the same is true and correct to the best of my knowledge and belief.

Date Surveyed
April 29, 1975

Registered Professional Engineer and/or Land Surveyor

John W. West
Signature

Certificate No. **676**

0 320 640 960 1280 1600 1920 2240 2560 2880 3200 3520 3840 4160 4480 4800 5120 5440 5760 6080 6400