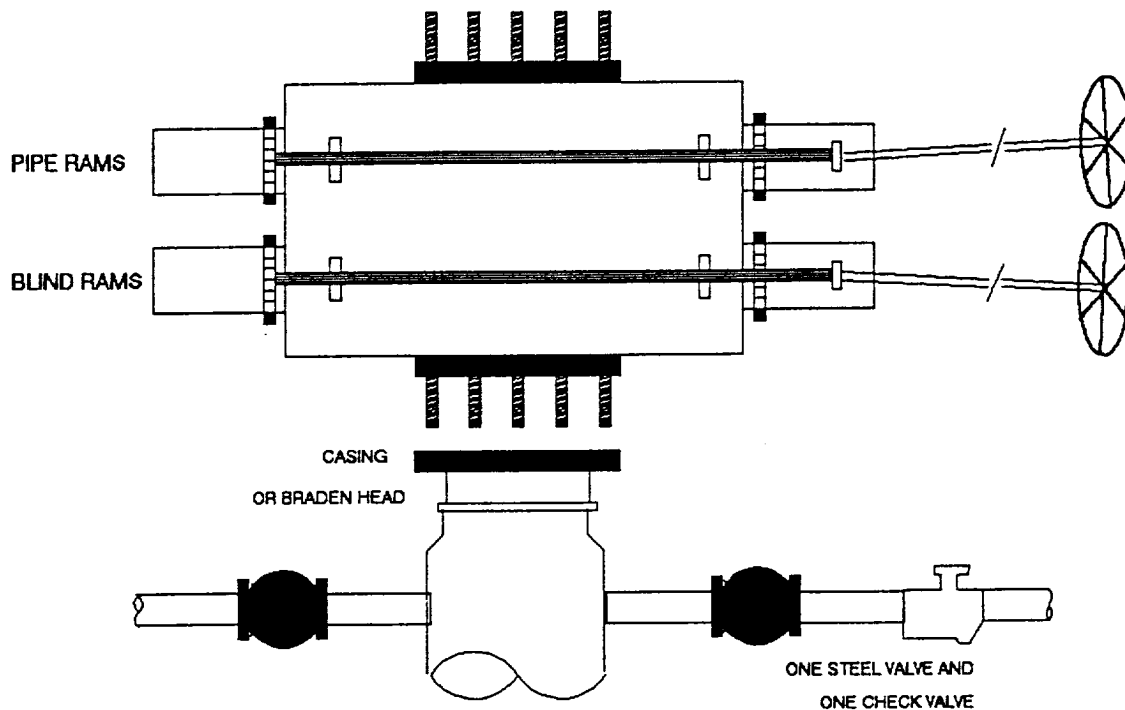


# 3000 PSI MANUAL BOP



## THE FOLLOWING CONSTITUTE MINIMUM BLOWOUT PREVENTER REQUIREMENTS

- A. One double gate blowout preventer with lower rams blind and upper rams for pipe. All either hydraulically or manually controlled.
- B. All connections from operating manifold to preventers to be steel hose or tube with a minimum of one inch in diameter if hydraulically controlled.
- C. The available closing pressure shall be at least 15% in excess of that required with sufficient volume to operate (close, open, and re-close) the preventers if hydraulically controlled.
- D. All connections to and from preventers to have a pressure rating equivalent to that of the BOP's.
- E. Manual controls to be installed with the installation of BOP stack.
- F. Full opening stabbing valve to be located on the rig floor (3000 PSI).